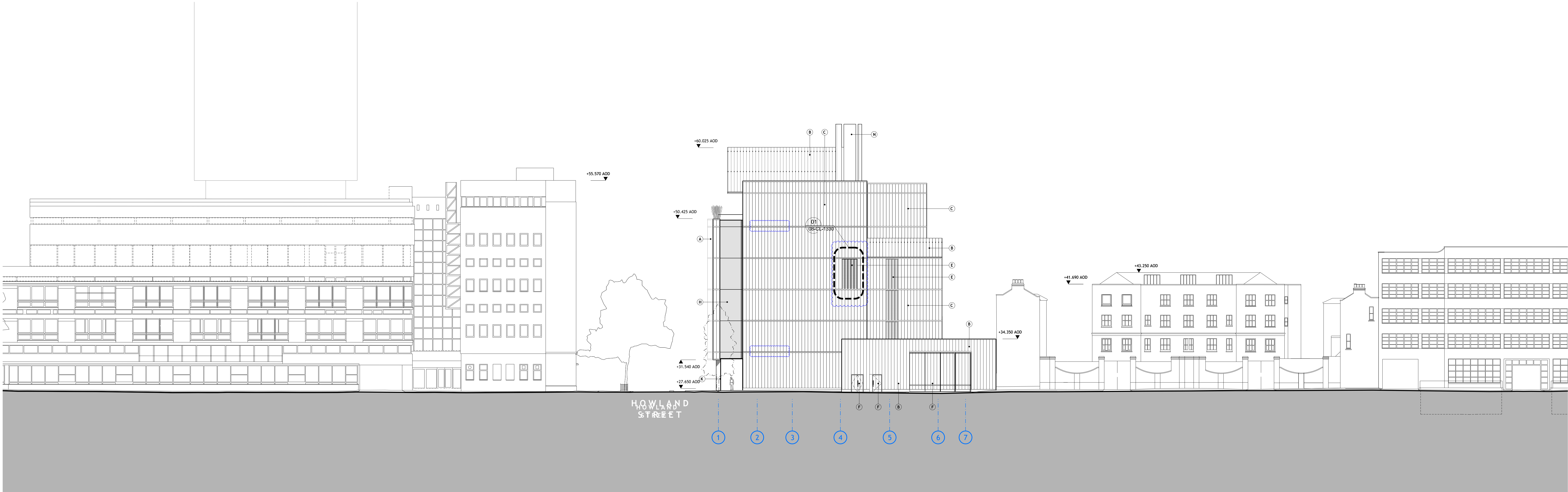


① PROPOSED EAST ELEVATION - CHARLOTTE STREET / FITZROY STREET



② PROPOSED WEST ELEVATION - CLEVELAND STREET

DO NOT SCALE

THIS DRAWING IS © SAN RITCHIE ARCHITECTS LTD

Dimensions to be verified on site.

Figured dimensions to take preference to those scaled.

All discrepancies to be clarified with the project architect.

Unless otherwise stated all levels to be AOD.

This drawing is the property of San Ritchie Architects Ltd and is issued on the condition it is not reproduced, resented or lent to any unauthorised person, either wholly or in part without written consent.

0m 4m 8m 12m

0 10 20 30 40 50 60

LEGEND:

(A) ENAMELLED LOW-IRON CAST GLASS WITH TRANSLUCENT INSULATION

(B) ENAMELLED LOW-IRON CAST GLASS

(C) ENAMELLED LOW-IRON CAST GLASS WITH OPAQUE INSULATION

(D) GLAZED WINDOW WITH ENAMELLED GLASS LOUVRES

(E) VENT FOR AIR INTAKE / EXTRACT WITH ENAMELLED GLASS LOUVRES

(F) DOOR WITH ENAMELLED GLASS FRONTAGE TO MATCH SURROUNDING CAST GLASS

(G) CLEAR GLAZED SLIDING DOOR

(H) FIXED CLEAR GLAZING

(I) REVOLVING DOOR

(J) VISUAL CONCRETE

(K) WHITE VISUAL CONCRETE COLUMNS

(L) GALVANISED MESH SCREEN TO GENERATOR AREA

(M) WHITE POWDERCOATED DOOR

(N) WHITE METAL FLUES

(O) TRANSLUCENT SUSPENDED LAMELLA SCREEN

(P) FIXED CLEAR GLAZING (VITRINE ART DISPLAY)

(Q) WHITE LOUVRE DOOR TO UKPN ROOM

(R) WHITE DRY RISER INLET BOX SET INTO ENAMELLED LOW-IRON CAST GLASS

Legend updated.

Cast glass amended to achieve similar effect as sandblasting.

Door positions and heights amended.

Louvre size amended.

Horizontal cladding bands amended.

Rev	Date	By	Ch	App	Description
1	01.02.13	KS	AS	GT	UCL Howland Street Site

Drawing Title

ELEVATIONS

EAST & WEST

PROPOSED

San Ritchie Architects Ltd

110 Three Colt Street London E14 8AZ

Tel: 020 7338 1100 Fax: 020 7338 1199

Status	PLANNING
Scale	1:200@A0
Date	01.02.13
Drawn	KS
Checked	AS
Approved	GT
Job No	608
Drawing No	IRAL-PSK2230
Rev	