

GENERAL NOTES  
For material see notes. For welds & dressing see details. All components to be hard stamped or permanently marked on un-seen faces with Job No & Mark No.  
  
This drawing has been produced in accordance with a D.Wilson Architectural Metalwork Ltd site survey carried out on --/--/-. Any variations / additions etc to surveyed area must be notified in writing to D.Wilson Architectural Metalwork Ltd. Failure to do so may result in cost and programme implications.

NOTE: DESIGN LOAD

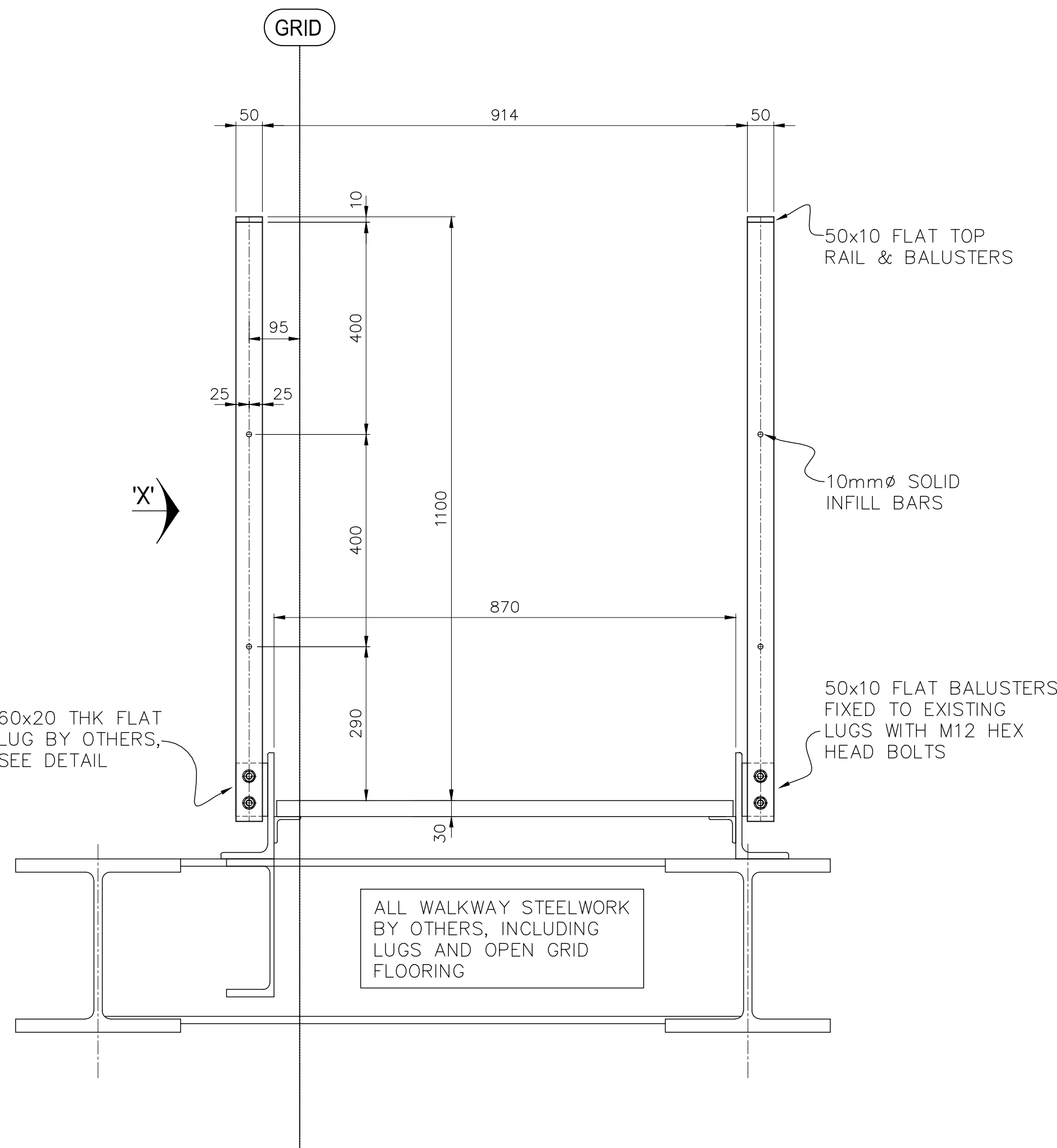
THE STAIR BALUSTRADE IS TO BE DESIGNED TO MEET A 0.74 KN/M HORIZONTAL LOAD.

MATERIALS - MILD STEEL

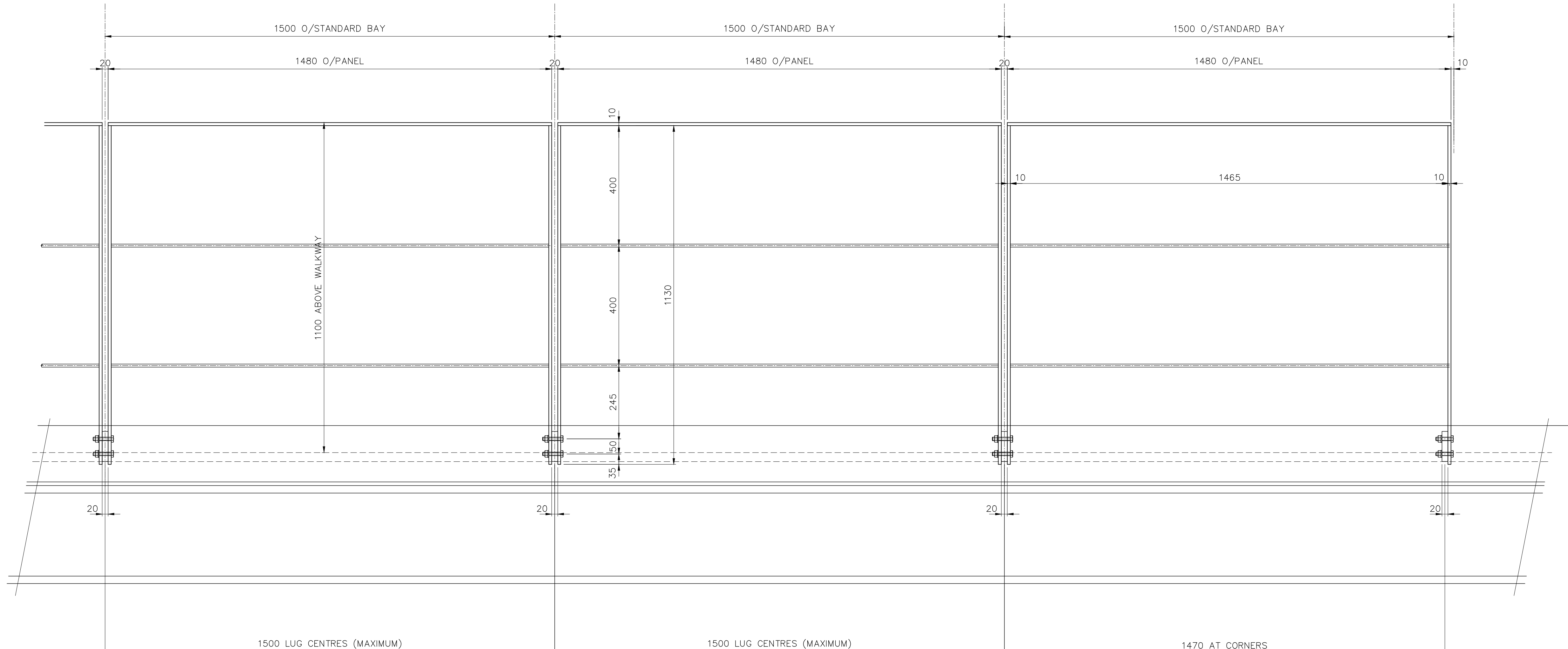
BALUSTRADE:-  
BALUSTERS - 50 X 10 THK FLAT  
TOP RAIL - 50 X 10 THK FLAT  
INFILL RAIL - 100 SOLID BAR

FINISHES

BALUSTRADE- HOT DIP GALVANISED



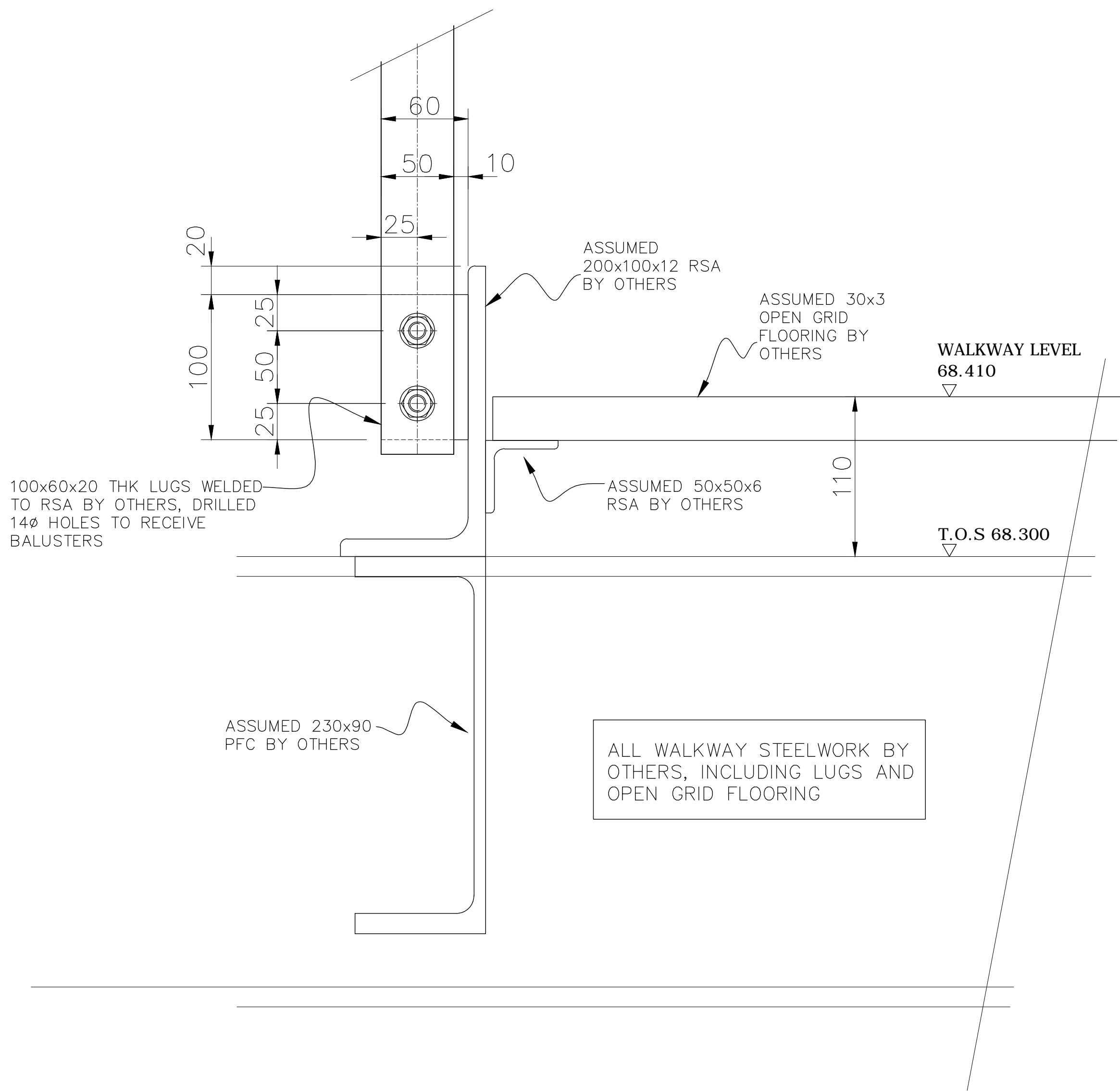
TYPICAL SECTION THRU' ON WALKWAY BALUSTRADE



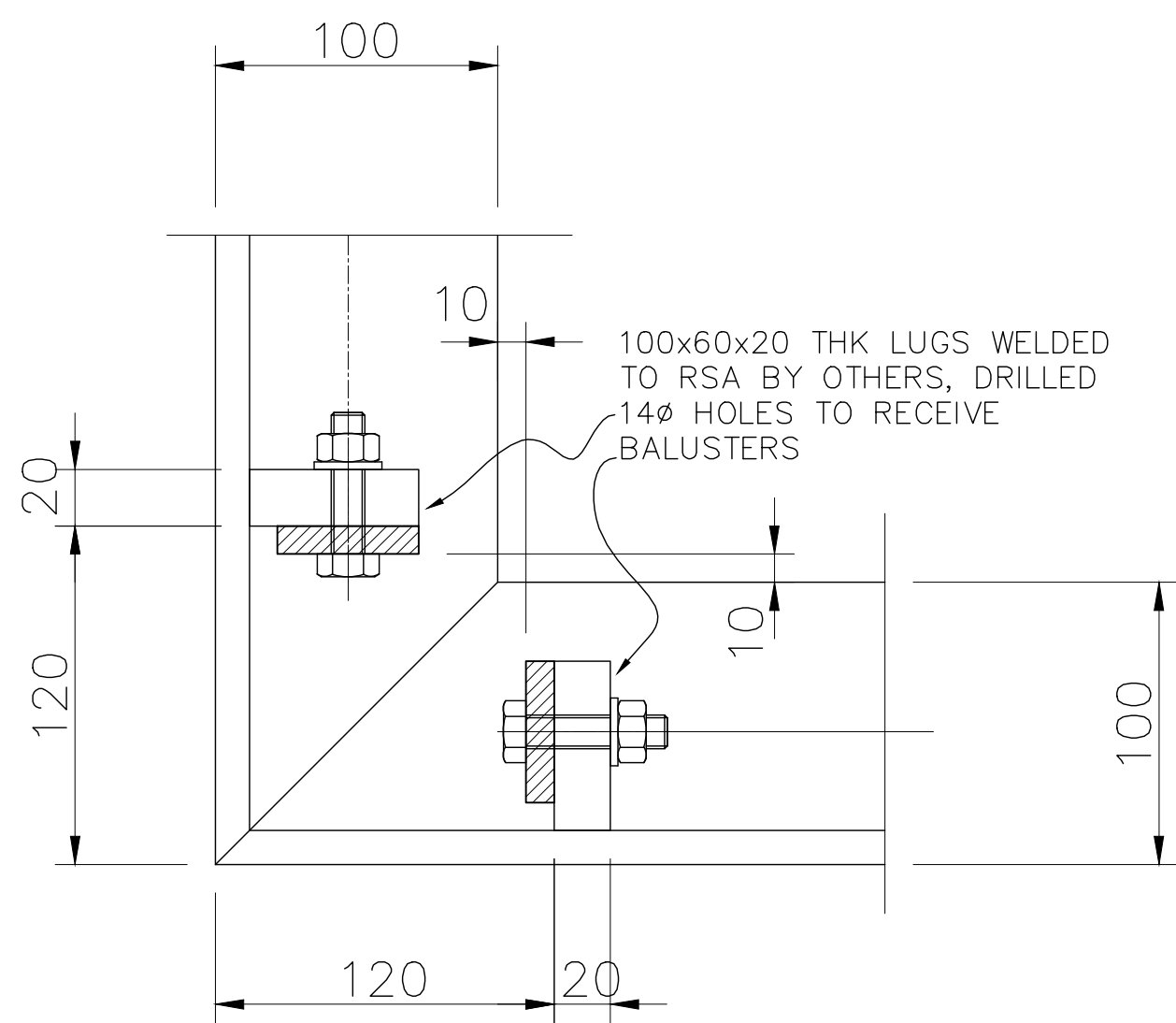
TYPICAL ELEVATION ON WALKWAY BALUSTRADE (VIEW ON ARROW 'X')

NOTE:

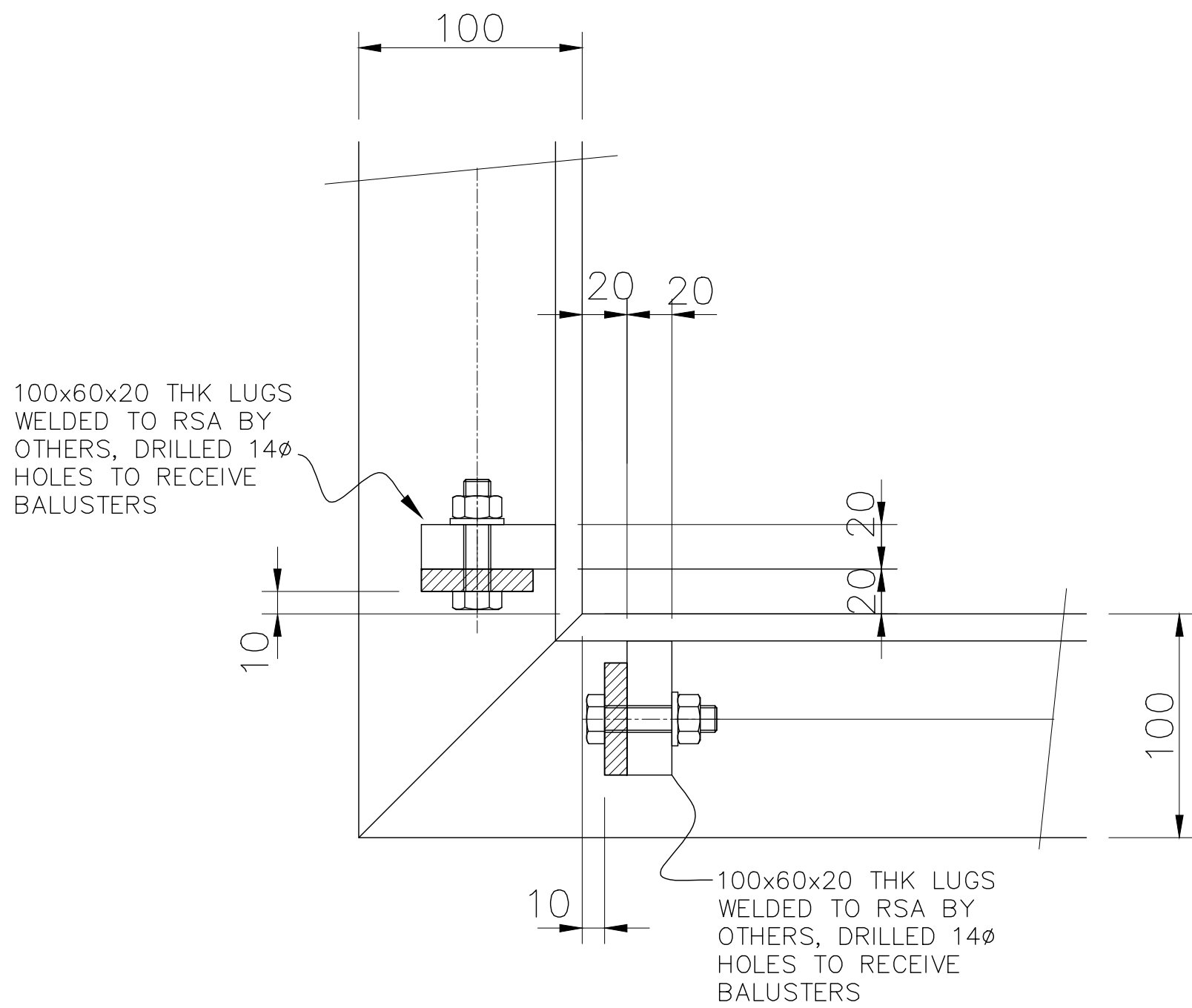
THE EXACT LAYOUT / POSITION OF LUGS TO BE DETERMINED BY STEEL WALKWAY MANUFACTURER, BASED ON 1500mm STANDARD BAYS, TO CORRESPOND WITH BUILDING GRID.  
FULL SET OUT OF WALKWAY BALUSTRADE TO FOLLOW.



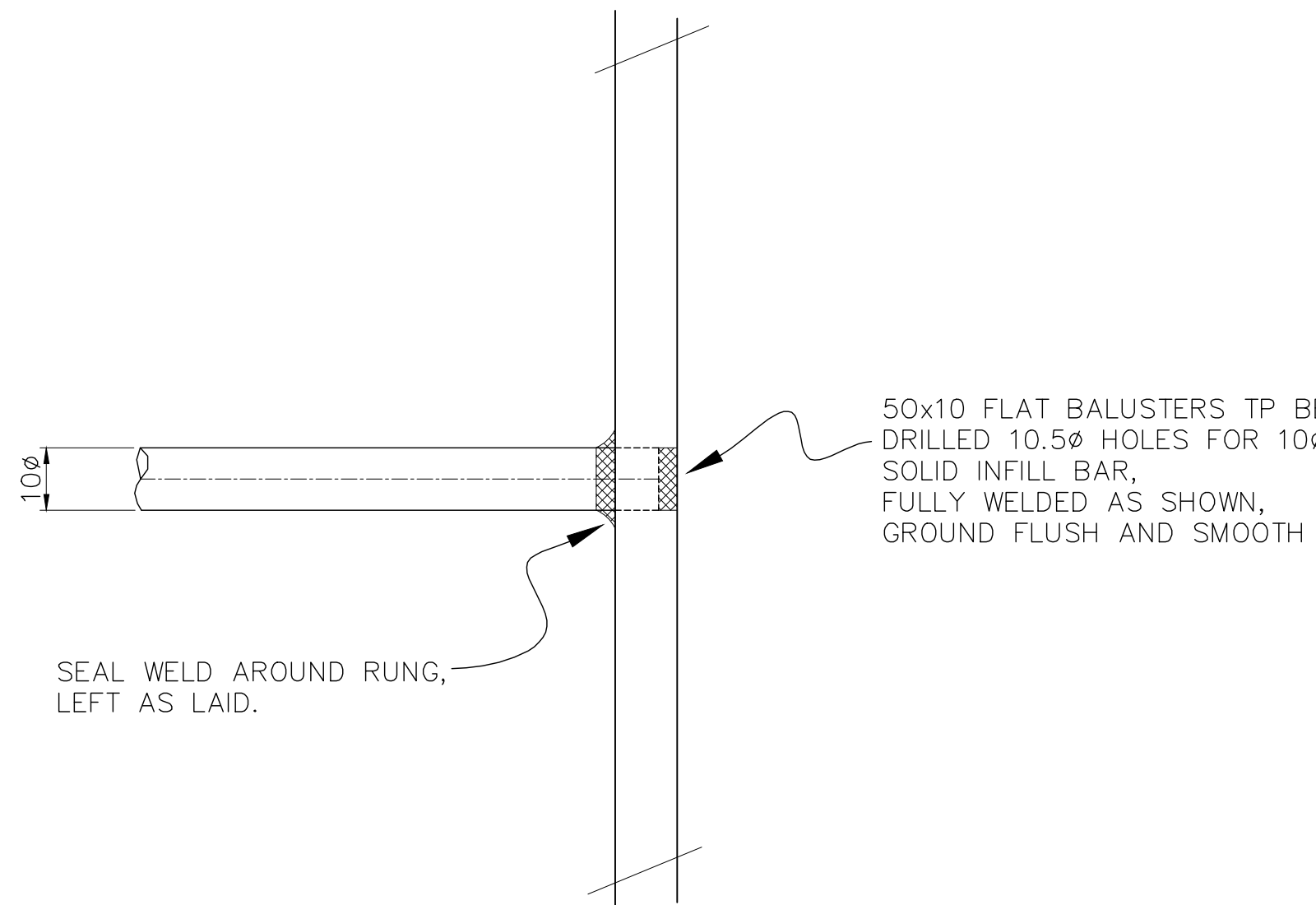
TYPICAL BALUSTER FIXING DETAIL



TYPICAL PLAN LAYOUT AT INTERNAL CORNER



TYPICAL PLAN LAYOUT AT EXTERNAL CORNER



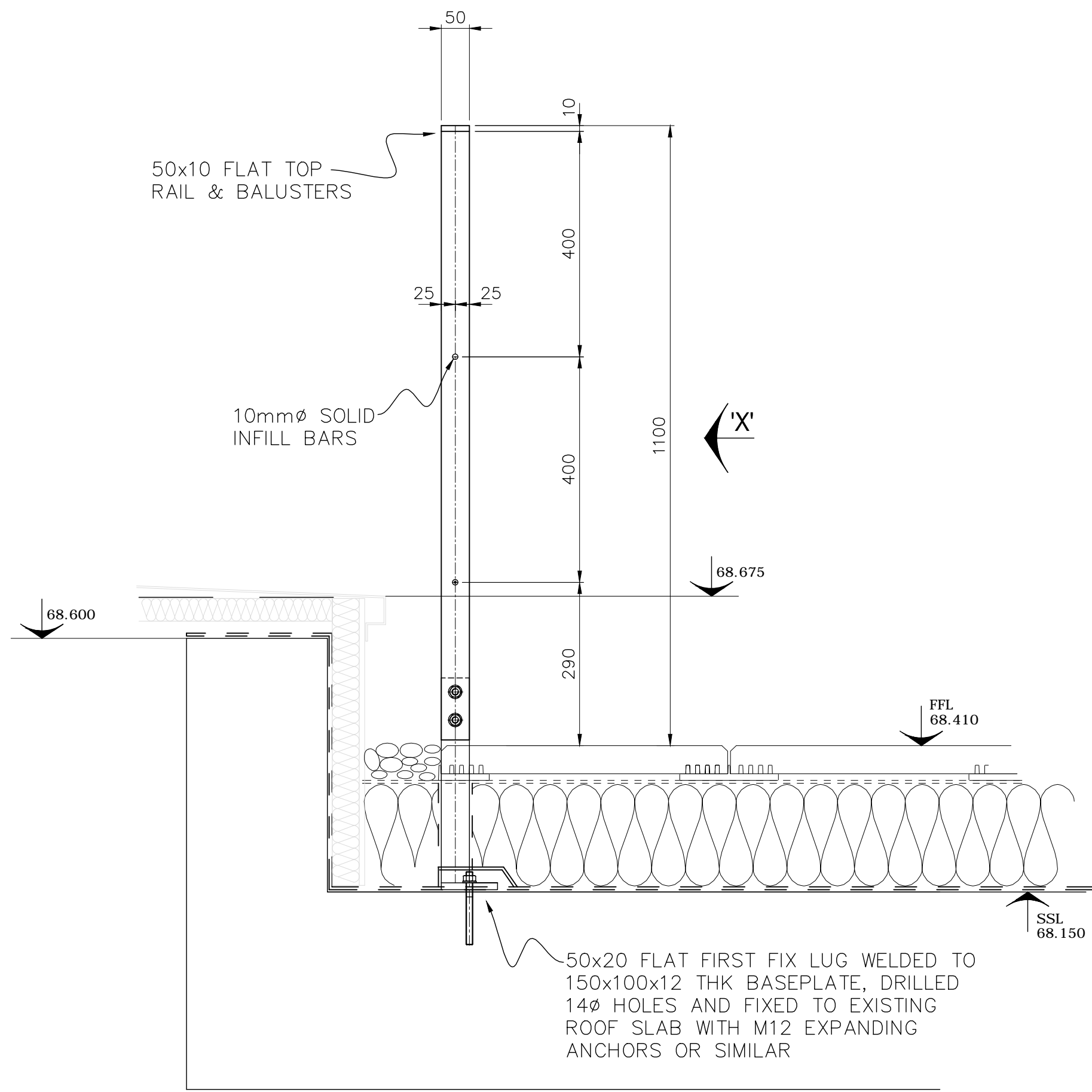
TYPICAL INFILL BAR DETAIL

D.WILSON ARCHITECTURAL METALWORK LTD. THIS DOCUMENT HAS BEEN ISSUED FOR THE FOLLOWING	
<input type="checkbox"/> INFORMATION	<input type="checkbox"/> CONSTRUCTION
<input type="checkbox"/> TENDER	<input type="checkbox"/> MANUFACTURE
<input type="checkbox"/> COMMENTS	<input type="checkbox"/> INSTALLATION
<input type="checkbox"/> APPROVAL	<input type="checkbox"/> AS BUILT
<input type="checkbox"/> STRUCTURAL CALCULATIONS	
DATE	SIGNED:

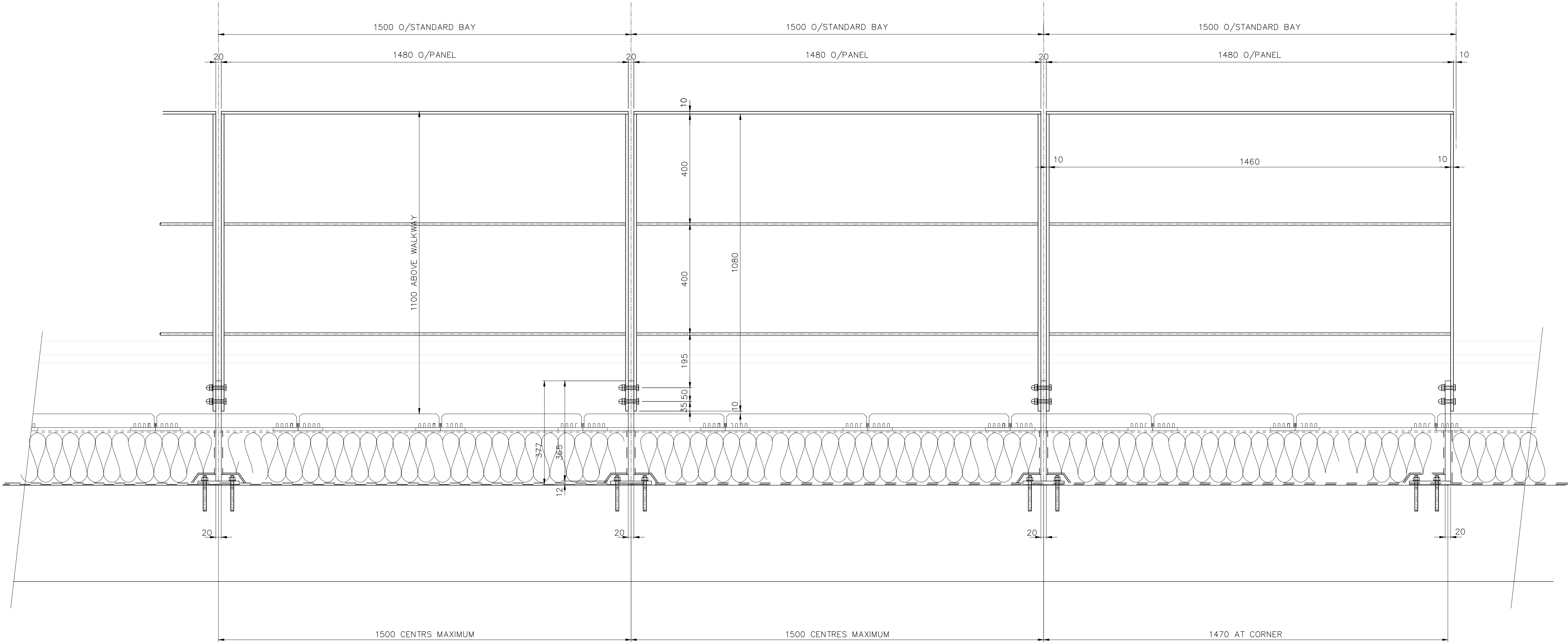
B	FIRST FIX LUGS AMENDED TO 20mm THK AS PER ARCHITECTS COMMENTS	22/5/13	AMD
A	DETAILS AMENDED TO SUIT COMMENTS. INFILL WIRES AMENDED TO SOLID BAR FOR FABRICATION PURPOSE.	13/5/13	AMD
Rev.	Description.	Date.	By.

**D WILSON**  
architectural metalwork Ltd.  
121/125 Wellington street Winson green Birmingham B18 4NN  
Tel: 0121 507 8400 Fax: 0121 507 8417 E-mail: www.dwilsonarchitectural.co.uk

Client:	KIER
Site:	PLOT B3-5 PANCRAS SQUARE
Title:	WALKWAY BALUSTRADE TYPICAL DETAILS
Finish:	SEE NOTES
Status:	FOR APPROVAL
Project Manager:	
Customer Ref:	
Drawn by:	AMD
Date:	31/4/13
Scale:	VARIES
Job no:	180003
Drawing no:	180003-B3-001
Revised:	II
manufacture of items shown will only proceed upon receipt of written approval	



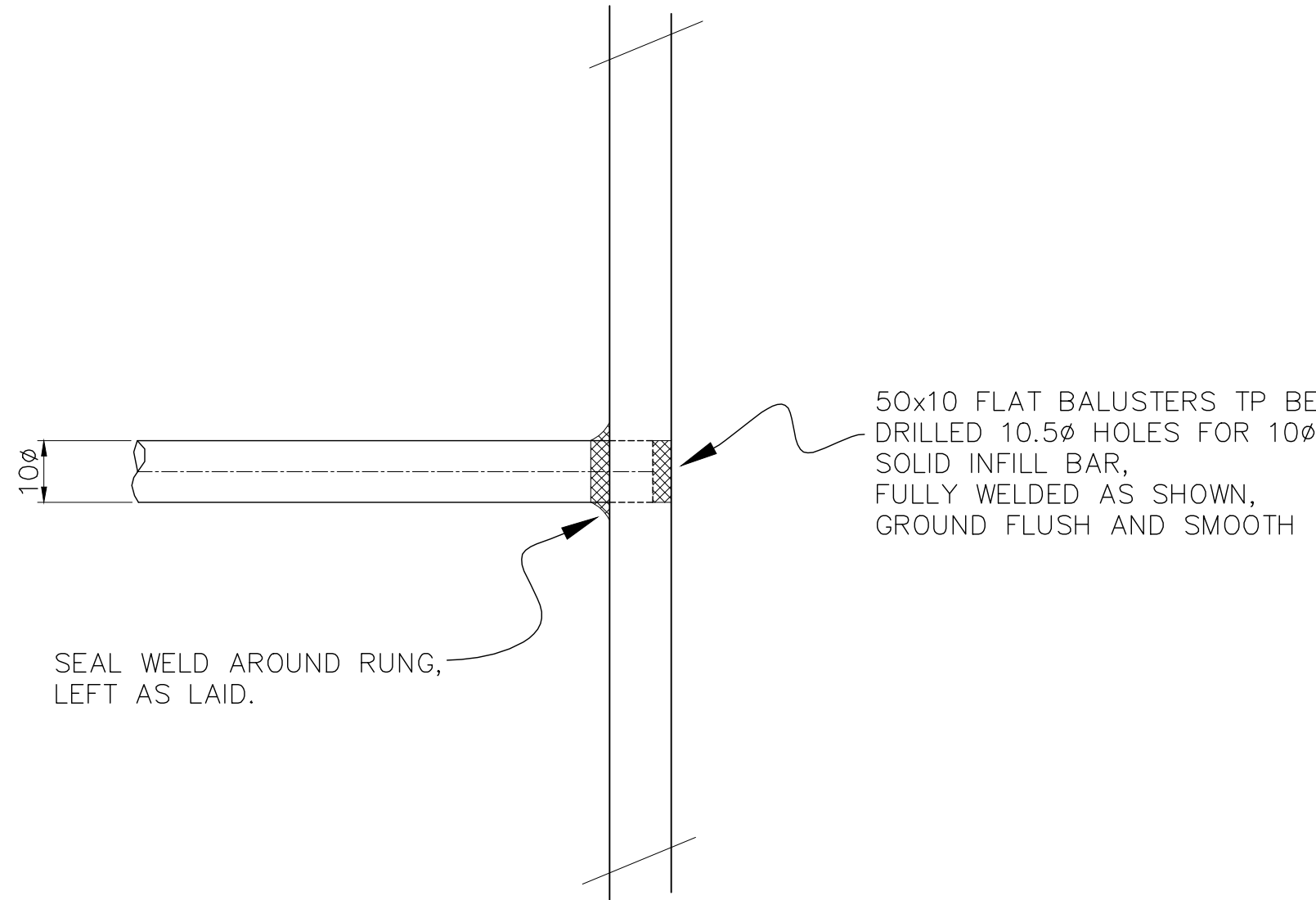
TYPICAL SECTION THRU' ON ROOF BALUSTRADE



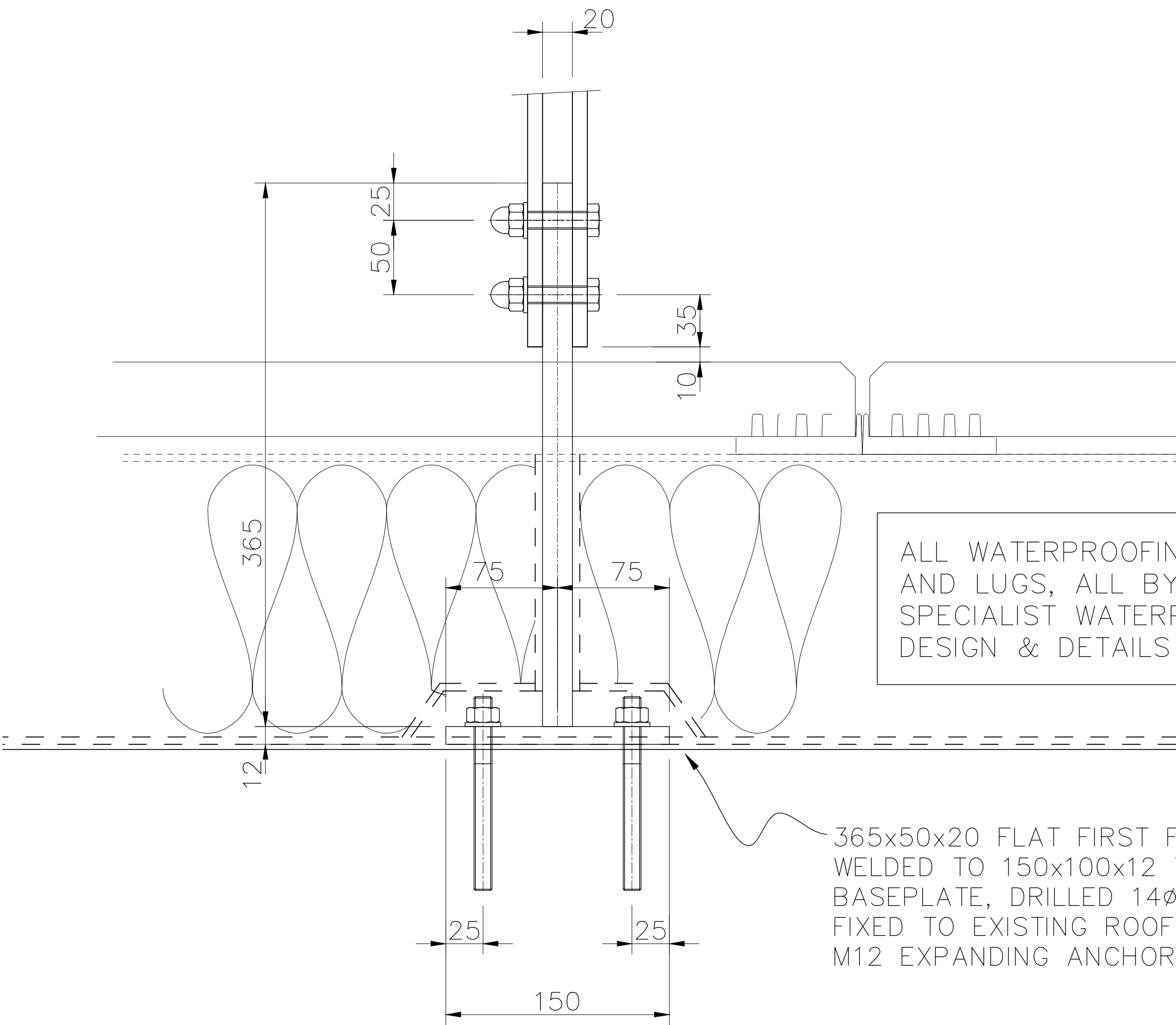
TYPICAL ELEVATION ON ROOF BALUSTRADE (VIEW ON ARROW 'X')

NOTE:

THE EXACT LAYOUT / POSITION OF BALUSTERS TO BE DETERMINED BY D.WILSON AFTER A FULL SITE SURVEY HAS BEEN CARRIED OUT, BASED ON 1500mm STANDARD BAYS, TO CORRESPOND WITH BUILDING GRID.  
FULL SET OUT OF ROOF BALUSTRADE TO FOLLOW



TYPICAL INFILL BAR DETAIL

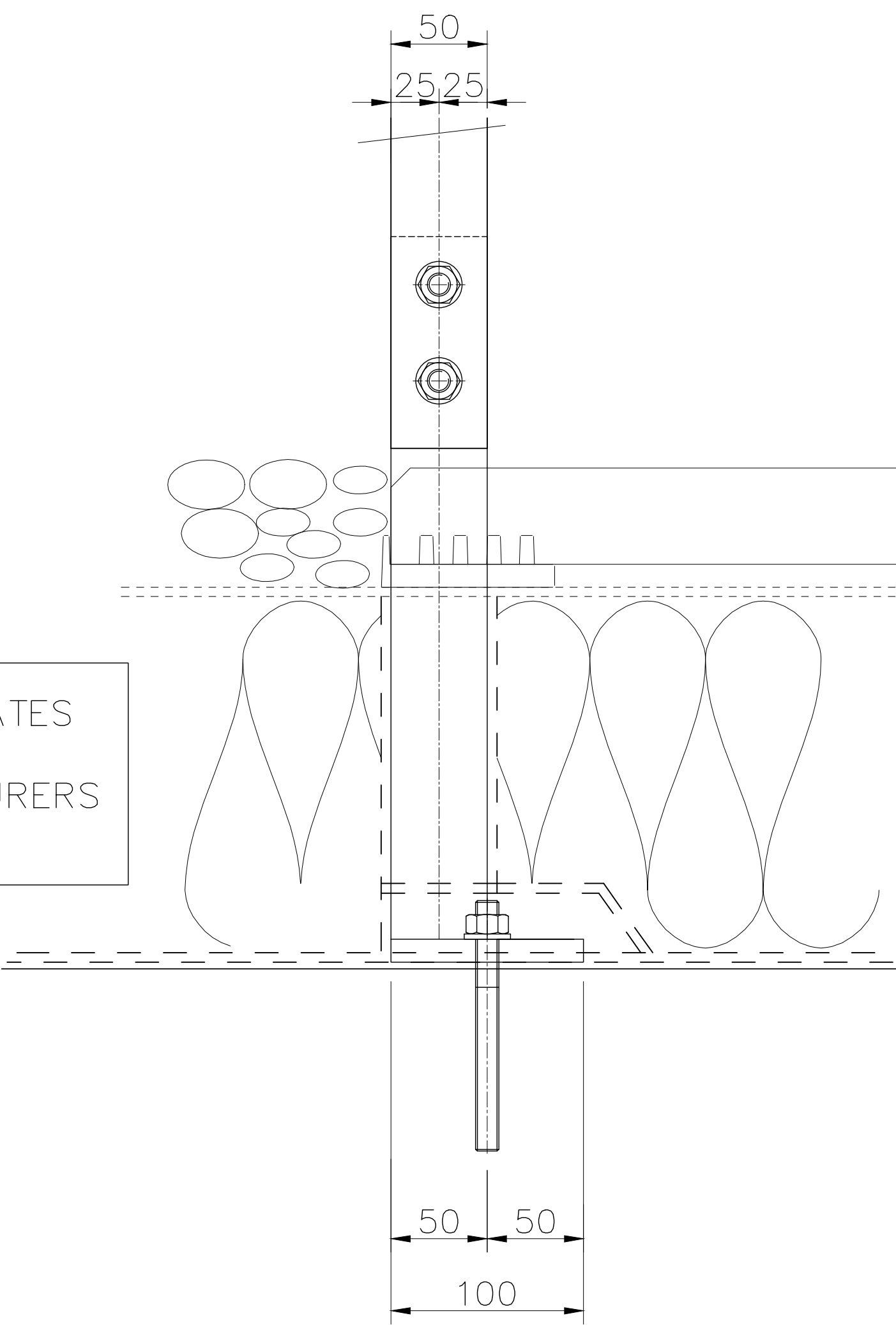


ALL WATERPROOFING AROUND BASE PLATES AND LUGS, ALL BY OTHERS, AS PER SPECIALIST WATERPROOFING MANUFACTURERS DESIGN & DETAILS

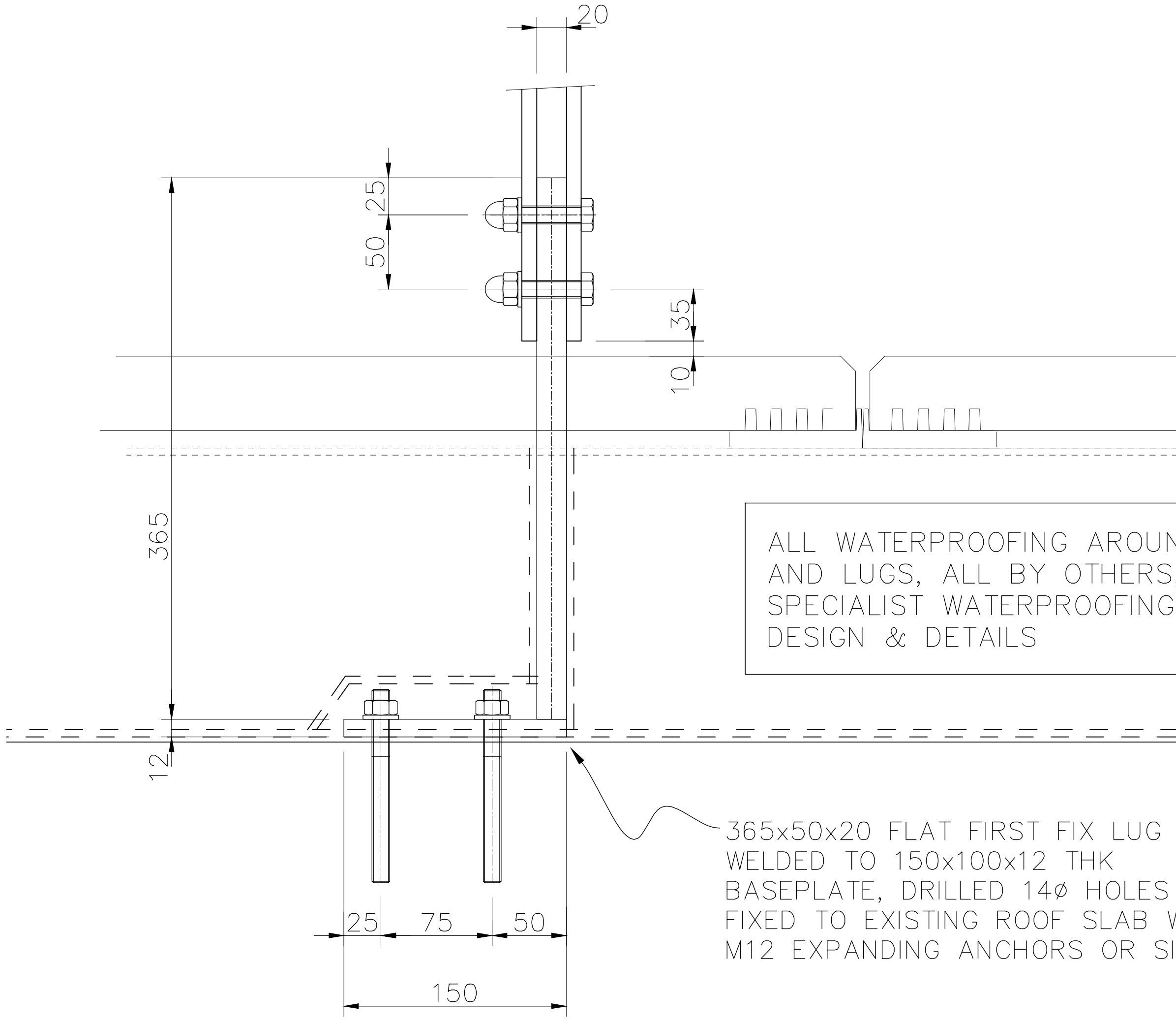
365x50x20 FLAT FIRST FIX LUG WELDED TO 150x100x12 THK BASEPLATE, DRILLED 14 $\phi$  HOLES AND FIXED TO EXISTING ROOF SLAB WITH M12 EXPANDING ANCHORS OR SIMILAR

FRONT ELEVATION

TYPICAL FIRST FIX BRACKET FIXING DETAIL



SIDE ELEVATION



ALL WATERPROOFING AROUND BASE PLATES AND LUGS, ALL BY OTHERS, AS PER SPECIALIST WATERPROOFING MANUFACTURERS DESIGN & DETAILS

365x50x20 FLAT FIRST FIX LUG WELDED TO 150x100x12 THK BASEPLATE, DRILLED 14 $\phi$  HOLES AND FIXED TO EXISTING ROOF SLAB WITH M12 EXPANDING ANCHORS OR SIMILAR

FRONT ELEVATION

TYPICAL FIRST FIX BRACKET AT CORNERS

GENERAL NOTES

For material see notes. For welds & dressing see details. All components to be hand stamped or permanently marked on un-seen faces with Job No & Mark No.

This drawing has been produced in accordance with a D.Wilson Architectural Metalwork Ltd site survey carried out on 22/5/13. Any variations / additions etc to surveyed area must be notified in writing to D.Wilson Architectural Metalwork Ltd. Failure to do so may result in cost and programme implications.

NOTE: DESIGN LOAD

THE STAIR BALUSTRADE IS TO BE DESIGNED TO MEET A 0.74 KN/M HORIZONTAL LOAD.

MATERIALS - MILD STEEL

BALUSTRADE:-  
BALUSTERS - 50 X 10 THK FLAT  
TOP RAIL - 50 X 10 THK FLAT  
INFILL RAIL - 100 SOLID BAR

FINISHES

BALUSTRADE - HOT DIP GALVANISED

D.WILSON ARCHITECTURAL METALWORK LTD. THIS DOCUMENT HAS BEEN ISSUED FOR THE FOLLOWING	
<input type="checkbox"/> INFORMATION	<input type="checkbox"/> CONSTRUCTION
<input type="checkbox"/> TENDER	<input type="checkbox"/> MANUFACTURE
<input type="checkbox"/> COMMENTS	<input type="checkbox"/> INSTALLATION
<input type="checkbox"/> APPROVAL	<input type="checkbox"/> AS BUILT
<input type="checkbox"/> STRUCTURAL CALCULATIONS	
DATE	SIGNED:

B	FIRST FIX LUGS AMENDED TO 20mm THK AS PER ARCHITECTS COMMENTS	22/5/13	AMD
A	DETAILS AMENDED TO SUIT COMMENTS. INFILL WIRES AMENDED TO SOLID BAR FOR FABRICATION PURPOSE.	13/5/13	AMD
Rev.	Description:	Date:	By:

**D WILSON**  
architectural metalwork Ltd.  
121/125 Wellington street Winslow green Birmingham B18 4NN  
Tel: 0121 507 8400 Fax: 0121 507 8417 E-mail: www.dwilsonarchitectural.co.uk

Client:	KIER		
Site:	PLOT B3-5 PANCRAS SQUARE		
Title:	ROOF BALUSTRADE TYPICAL DETAILS		
Finish:	SEE NOTES		
Status:	FOR APPROVAL		Project Manager:
Customer Ref:			
Drawn by:	Date:	Scale:	Job no:
AMD	1/5/13	VARIES	18003
Drawing no:	18003-B3-002		Revised:
			B
manufacture of items shown will only proceed upon receipt of written approval			