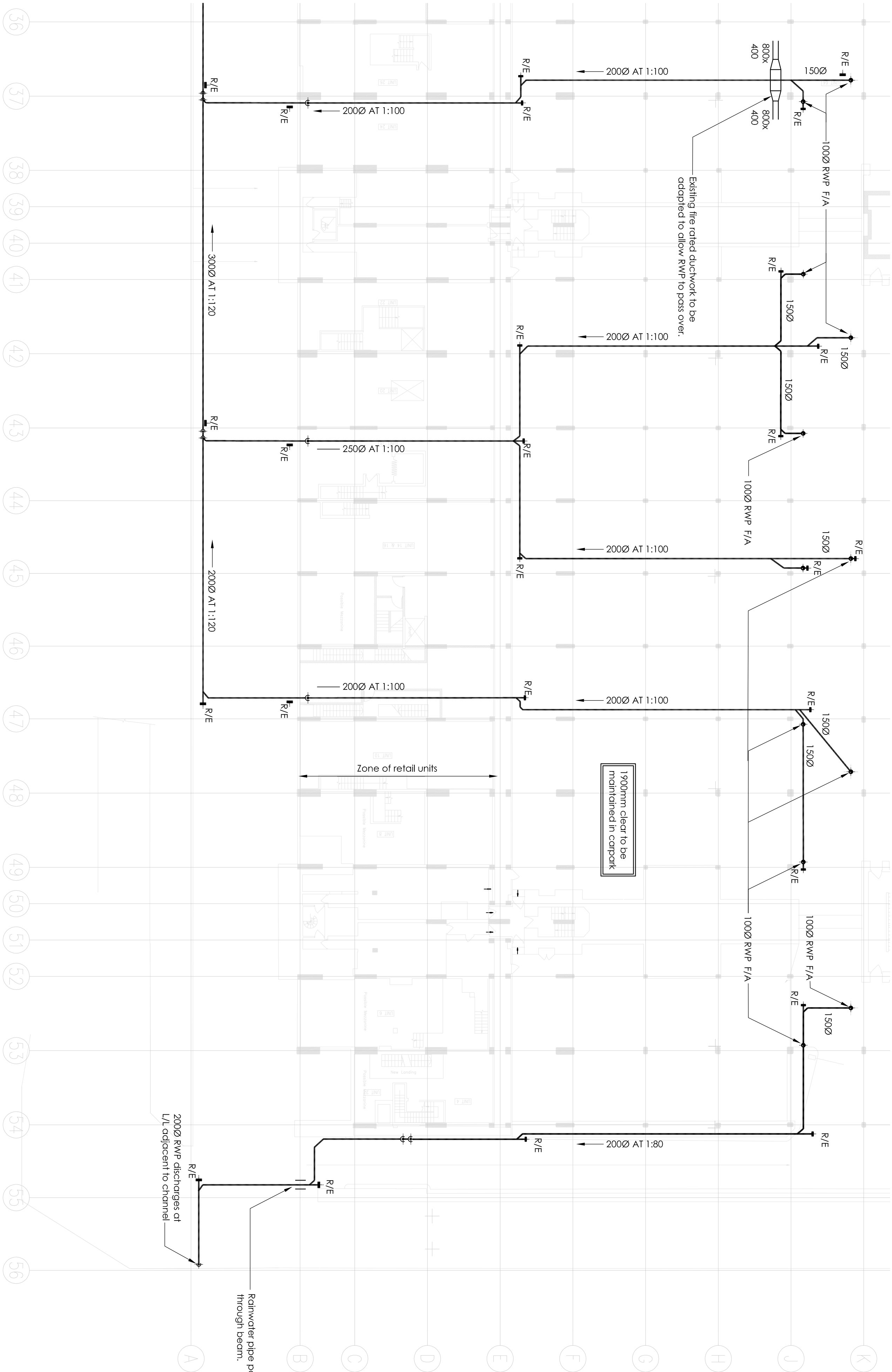


For continuation refer to drawing 53530/P/B/103



Important:

or reproduced without permission.

This drawing shall not be scaled.

Unless stated otherwise, all dimensions are in millimetres.

Where applicable, all dimensions shall be checked by the contractor onsite, prior to commencement of any works.

drawings shall be read in conjunction with all other drawings and the services specification document(s).

All materials and workmanship shall conform with the relevant British & European Standards, Specifications and Codes of Practice.

Notes:

1. All existing syphonic drainage at carpark level is to be stripped out and replaced with a gravity system.
2. Any changes in pipe sizes are to be done with level invert to maintain head room within carpark.

Rev	Date	Description	Dim	Chkd
T2	May/13	Tender Issue	D8	DBU
T1	Apr/13	Tender Issue	D8	DBU

Client
Watts Group
Project
The Brunswick
Bloomsbury WC1

**Chapman
+BDS**

www.chapmanbds.com | info@chapmanbds.com

Drawing title			
Upper Carpark Drainage Layout Sheet 4 of 4			
Drawn	Engineer	Approved	Date origin
DB	DB	DBU	Apr'13
Scale @ A1			
File BHM ref			
53530-P-8 104			