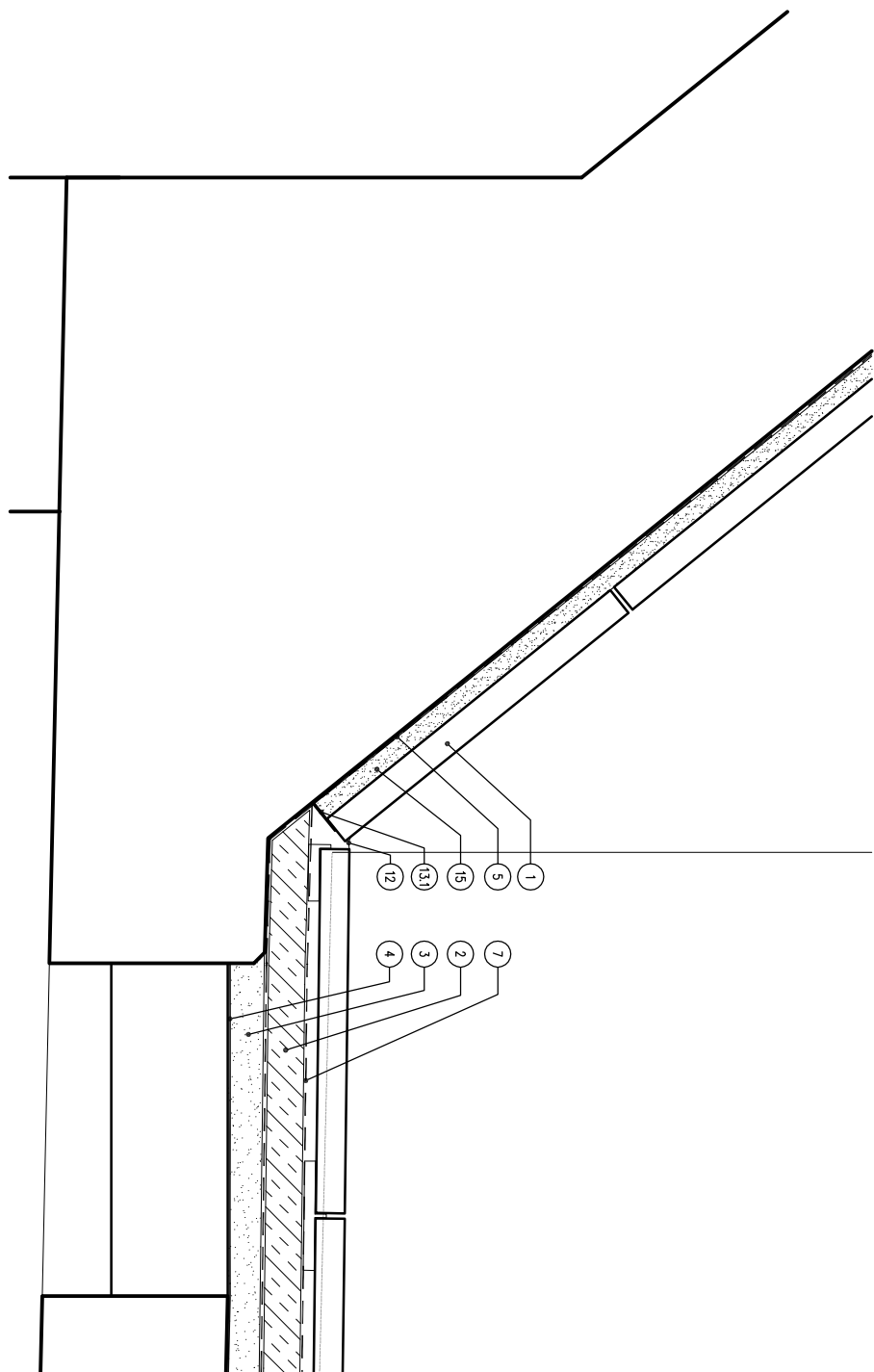
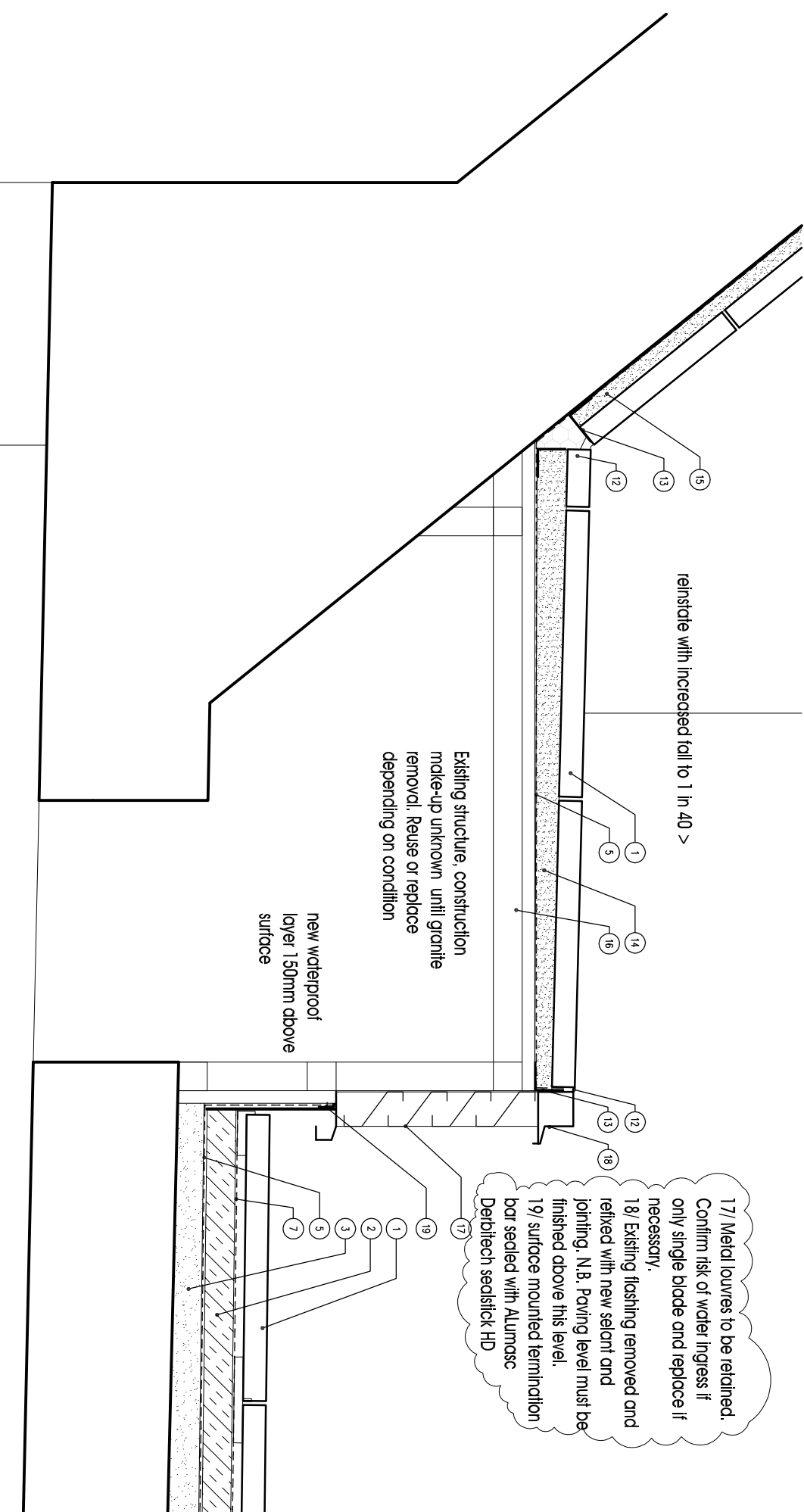


- 1) granite 500x500mm sq. - ref Q25311 Nicorettes (45mm subject to supplier / grade) on spacers (Cero or other approved) except on dikes where granite will be seen bonded
- 2) 50mm insulation J31340
- 3) external screed - fall formed in the layer - depth will vary spec ref: M10115 and M10120
- 4) existing waterproofing removed within 200mm of perimeter junction, concrete packed footing on to dry vertical surface 110mm
- 5) 200mm x 200mm x 20mm spaced J311130 bonded to base of concrete perimeter and canopy where the substrate will be the concrete slab - in some cases bonded to the existing Proce.
- 6) Aco Feeddeck / former blockwork or other approved two level inverted roof channel R10345
- 7) separating steel filler layer, Roommate MK or other approved
- 8) Skia render fill (Skia top 122 spec ref C42310) to provide lush substrate for waterproofing
- 9) granite setting bonded to vertical waterproof layer with hydrotech light forming PU adhesive) (5.5kg / 2 other approved
- 10) through profile aluminium outlet to disperse water from podium level
- 11) waterproof coating down 150mm above surface level
- 12) mastic sealer
- 13.1) Gypsum or steel bolted support angle
- 13.2) Stainless steel angle formed to suit 3mm approx. 50mm legs
- 14) Cement based bedding layer - 30mm - constant thickness
- 15) Bein bonded adhesive layer
- 16) Skia render fill (Skia top 122 spec ref: C42310) to provide lush substrate for waterproofing

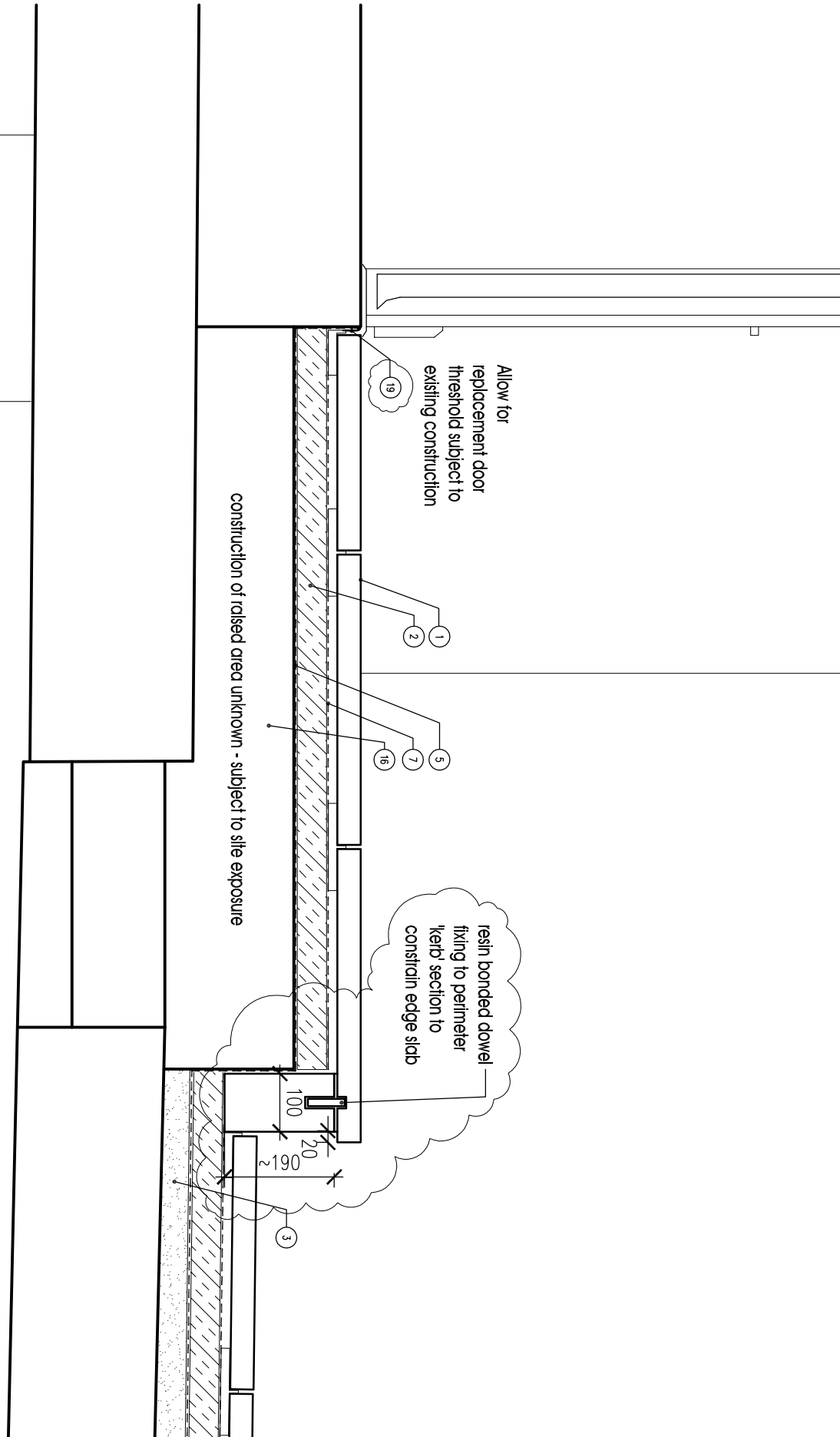
1. EDGE CONDITION -
BOUNDARY TO RESIDENCE



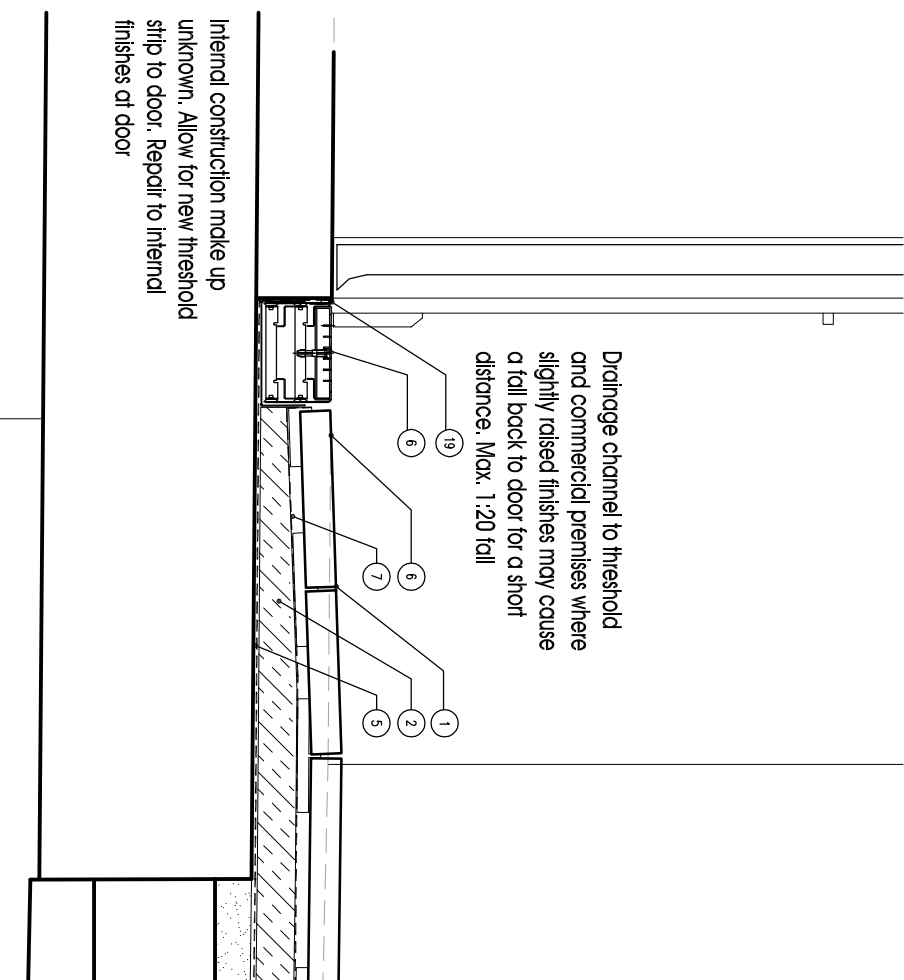
2. EDGE CONDITION -
BOUNDARY TO RESIDENCE



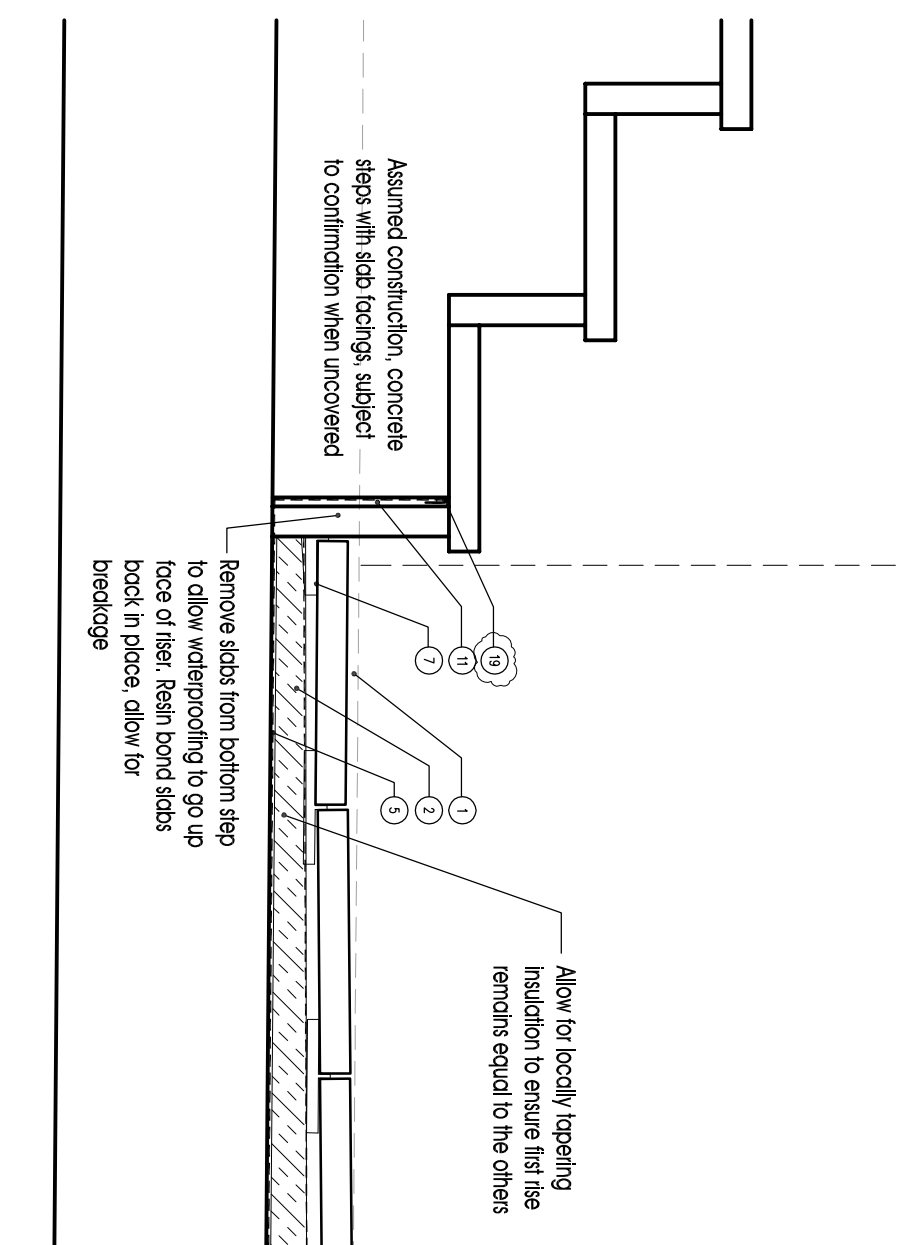
3. EDGE CONDITION -
LOUVRE VENT JUNCTION



4. EDGE CONDITION -
PLATFORM / STEP (FORMER VENT) JUNCTION



5. EDGE CONDITION -
COMMERCIAL UNIT



6. EDGE CONDITION -
STEPS AT BOUNDARY

consultants

notes

To not scale this drawing
All dimensions to be checked by the Contractor where construction proceeds
This drawing is the copyright of Walters Gray International LLP and shall not
be in any way used or reproduced without their prior written consent.

rev	date	by	app.	description
A	APR13	SG	CG	ADDITIONAL DETAIL ADDED
B	26/04/13	SG	CG	DETAIL REVISIONS FOLLOWING INTERNAL REVIEW JS 03/05/2013

location

WGI
Walters Gray International LLP
Collectchurch House, 1 London Bridge Wok, LONDON, SE1 2SX
Tel: 020 7940 8400 Fax: 020 7940 8444 mcl@wgi.co.uk

Project Title
BRUNSWICK CENTRE

Drawing Title
PODIUM LEVEL DETAILS
SHEET 1

author	checked by	scale
SB	CG	1:100MM
drawn	date	drawn by
-	FEB 13	REVISION

112033 D3001

B

ISSUED FOR
TENDER