

16 17 18 19 20 21 22 23 24 25 26 27 28 29 30 31 32 33 34 35 36 37 38 39 40 41 42 43 44 45 46 47 48 49 50 51 52 53 54 55 56

M/J

M/J

M/J

M/J

M/J

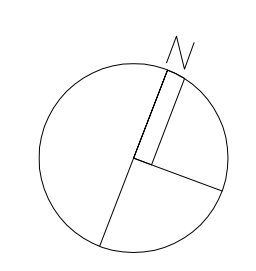
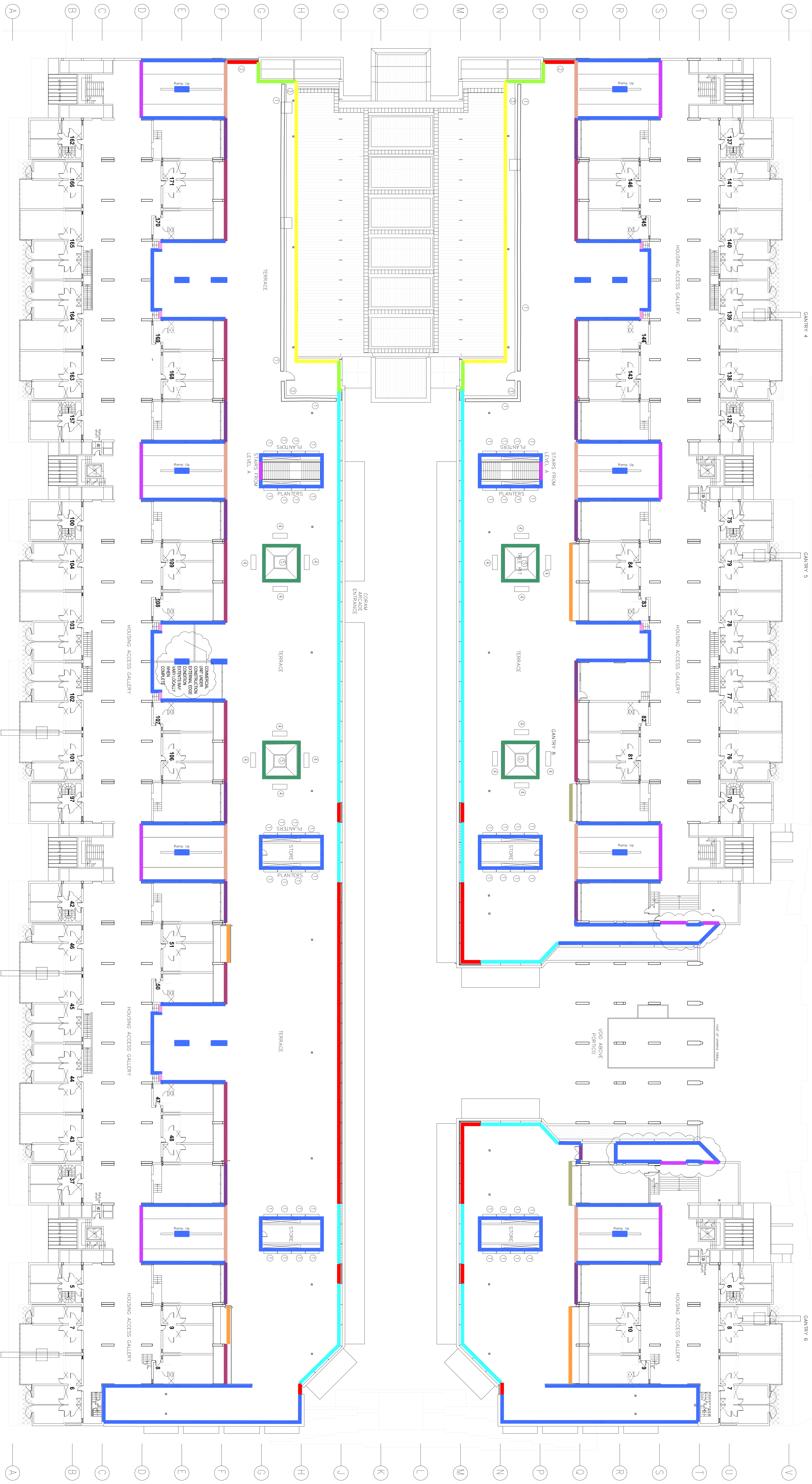
M/J

M/J

M/J

ODONNELL COURT

J/A/S



1:500@A3

FOUNDLING COURT

16 17 18 19 20 21 22 23 24 25 26 27 28 29 30 31 32 33 34 35 36 37 38 39 40 41 42 43 44 45 46 47 48 49 50 51 52 53 54 55 56

M/J

M/J

M/J

ISSUED FOR TENDER



WGL WORLD GEO INFORMATION LTD
Caledonian House, 100 Broad Walk, LONDON, SE 26
Tel: 020 7462 0000 Fax: 020 7462 0044 enquiries@wgl.co.uk

Project Name
BRUNSWICK CENTRE

CA PLAN - KEY DRAWING

Scale
1:2000 A0

Date
11/2022

Drawn By
A013

C

FIGURE 10: EXISTING BUILDING STRUCTURE AND EXISTING
BUILDING RESERVATION WORKS ON PROPOSED NEW WALKWAY

Edge Condition 1 - boundary to residence within (see D 1/2021)
Edge Condition 2 - boundary to residence
Edge Condition 3 - house (wall) junction
Edge Condition 4 - podium / step (interior wall) junction
Edge Condition 5 - commercial unit
Edge Condition 6 - steps at boundary
Edge Condition 7 - concrete parapet
Edge Condition 8a - low concrete upstand with metal railing variation
Edge Condition 8b - parapet boundary without white U 9/2022
Edge Condition 9 - concrete junction
Edge Condition 10 - tree pit

Edge Condition 11 - wall base detail (low concrete)
Edge Condition 12 - wall base detail (low concrete)
Edge Condition 13 - ramp junction
Edge Condition 14 - ramp junction
Edge Condition 15 - ramp junction

- 1) Spill Pallet (and shade white)
- 2) Metal railings which in indicated locations will need to be removed and replaced with new metal railings (see detail)
- 3) Steel posts and bracing to support railings, temporarily removed and fitted during works
- 4) New access (door opening)
- 5) Semi-private trees in tree pits

consultants

notes

rev	date	by	chk	description
1	2021/11/22	WGL	WGL	ISSUED FOR TENDER
2	2021/11/22	WGL	WGL	ISSUED FOR TENDER
3	2021/11/22	WGL	WGL	ISSUED FOR TENDER
4	2021/11/22	WGL	WGL	ISSUED FOR TENDER
5	2021/11/22	WGL	WGL	ISSUED FOR TENDER
6	2021/11/22	WGL	WGL	ISSUED FOR TENDER
7	2021/11/22	WGL	WGL	ISSUED FOR TENDER
8	2021/11/22	WGL	WGL	ISSUED FOR TENDER
9	2021/11/22	WGL	WGL	ISSUED FOR TENDER
10	2021/11/22	WGL	WGL	ISSUED FOR TENDER
11	2021/11/22	WGL	WGL	ISSUED FOR TENDER
12	2021/11/22	WGL	WGL	ISSUED FOR TENDER
13	2021/11/22	WGL	WGL	ISSUED FOR TENDER
14	2021/11/22	WGL	WGL	ISSUED FOR TENDER
15	2021/11/22	WGL	WGL	ISSUED FOR TENDER
16	2021/11/22	WGL	WGL	ISSUED FOR TENDER
17	2021/11/22	WGL	WGL	ISSUED FOR TENDER
18	2021/11/22	WGL	WGL	ISSUED FOR TENDER
19	2021/11/22	WGL	WGL	ISSUED FOR TENDER
20	2021/11/22	WGL	WGL	ISSUED FOR TENDER
21	2021/11/22	WGL	WGL	ISSUED FOR TENDER
22	2021/11/22	WGL	WGL	ISSUED FOR TENDER
23	2021/11/22	WGL	WGL	ISSUED FOR TENDER
24	2021/11/22	WGL	WGL	ISSUED FOR TENDER
25	2021/11/22	WGL	WGL	ISSUED FOR TENDER
26	2021/11/22	WGL	WGL	ISSUED FOR TENDER
27	2021/11/22	WGL	WGL	ISSUED FOR TENDER
28	2021/11/22	WGL	WGL	ISSUED FOR TENDER
29	2021/11/22	WGL	WGL	ISSUED FOR TENDER
30	2021/11/22	WGL	WGL	ISSUED FOR TENDER
31	2021/11/22	WGL	WGL	ISSUED FOR TENDER
32	2021/11/22	WGL	WGL	ISSUED FOR TENDER
33	2021/11/22	WGL	WGL	ISSUED FOR TENDER
34	2021/11/22	WGL	WGL	ISSUED FOR TENDER
35	2021/11/22	WGL	WGL	ISSUED FOR TENDER
36	2021/11/22	WGL	WGL	ISSUED FOR TENDER
37	2021/11/22	WGL	WGL	ISSUED FOR TENDER
38	2021/11/22	WGL	WGL	ISSUED FOR TENDER
39	2021/11/22	WGL	WGL	ISSUED FOR TENDER
40	2021/11/22	WGL	WGL	ISSUED FOR TENDER
41	2021/11/22	WGL	WGL	ISSUED FOR TENDER
42	2021/11/22	WGL	WGL	ISSUED FOR TENDER
43	2021/11/22	WGL	WGL	ISSUED FOR TENDER
44	2021/11/22	WGL	WGL	ISSUED FOR TENDER
45	2021/11/22	WGL	WGL	ISSUED FOR TENDER
46	2021/11/22	WGL	WGL	ISSUED FOR TENDER
47	2021/11/22	WGL	WGL	ISSUED FOR TENDER
48	2021/11/22	WGL	WGL	ISSUED FOR TENDER
49	2021/11/22	WGL	WGL	ISSUED FOR TENDER
50	2021/11/22	WGL	WGL	ISSUED FOR TENDER
51	2021/11/22	WGL	WGL	ISSUED FOR TENDER
52	2021/11/22	WGL	WGL	ISSUED FOR TENDER
53	2021/11/22	WGL	WGL	ISSUED FOR TENDER
54	2021/11/22	WGL	WGL	ISSUED FOR TENDER
55	2021/11/22	WGL	WGL	ISSUED FOR TENDER
56	2021/11/22	WGL	WGL	ISSUED FOR TENDER