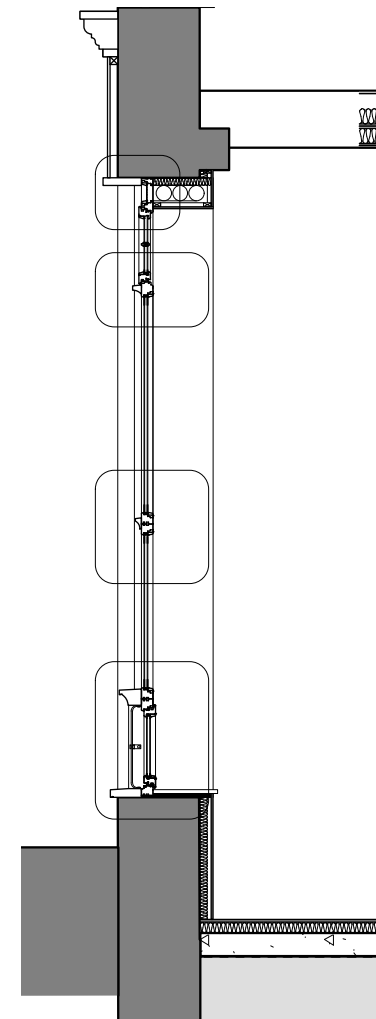
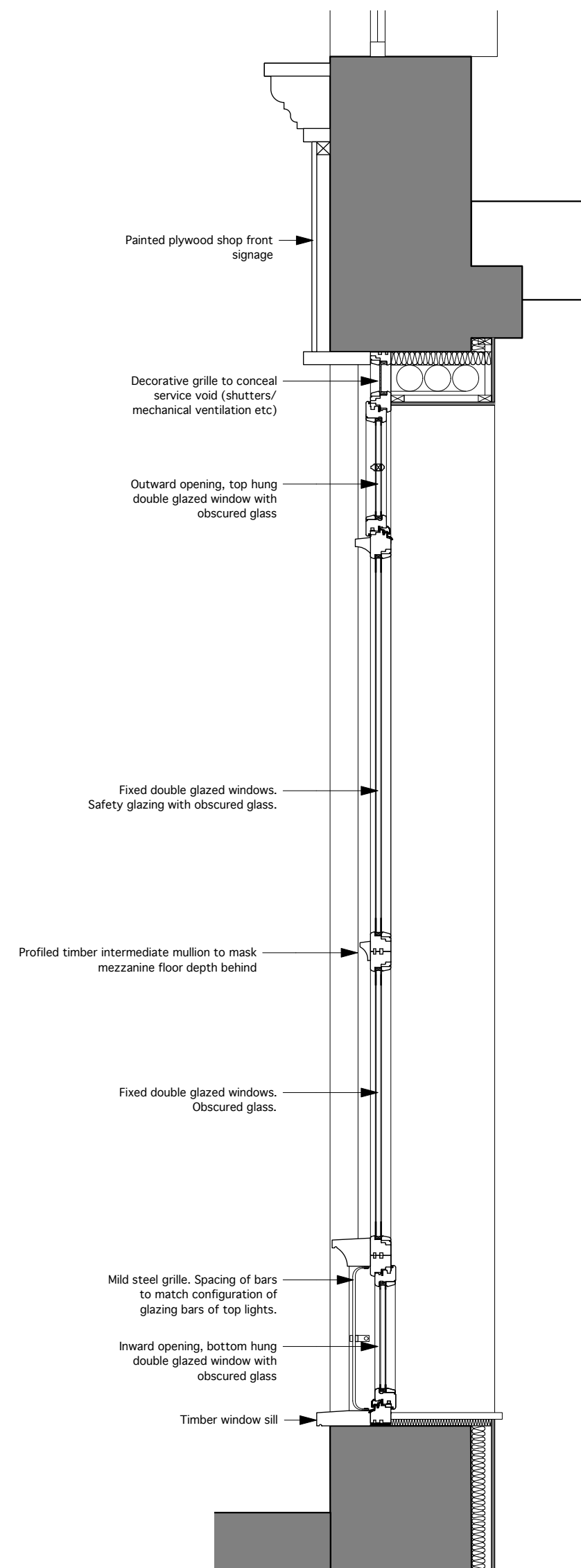


1 Section details  
1: 5



2 Section AA  
1: 50



4 Detail Section AA  
1: 20



3 Elevation  
1: 20



5 Detail Elevation  
1: 20

A 17/5/13  
revisions:

All dimensions and areas are approximate and are to be verified on site.

NORTON MAYFIELD ARCHITECTS LLP

Spaceworks, Harland Works, John Street, Sheffield S2 4QU  
t: 0114 270 0014, studio@nortonmayfield.co.uk

PLANNING

client:

28-34 Fortress Road  
London. NW5

drawing N°:  
1117-A.-601

Planning condition B and E  
Shopfront and doors  
date:  
MAY 2013

scale:  
1:50, 1:20 @ A1