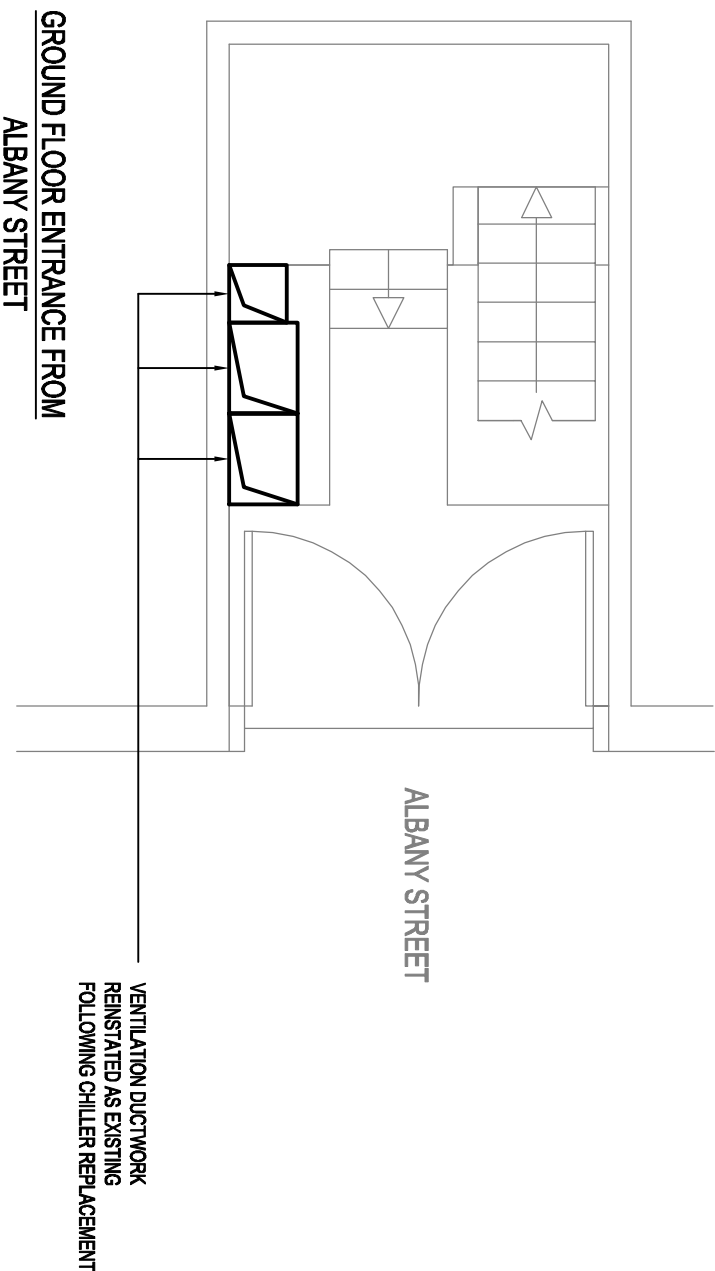
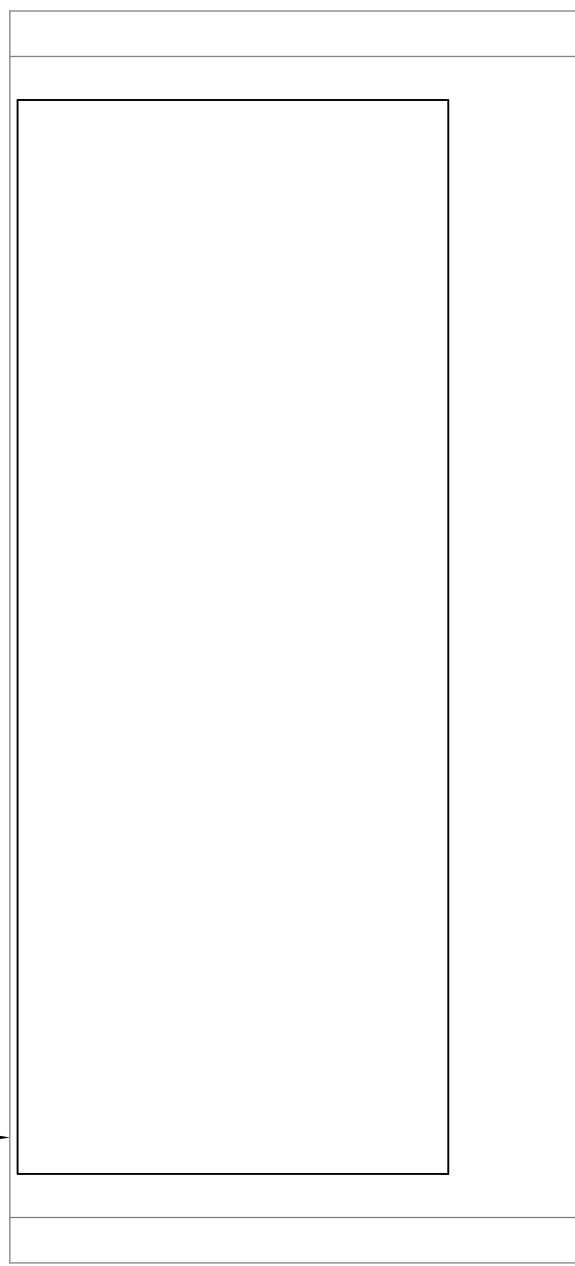


PROPOSED BASEMENT LEVEL

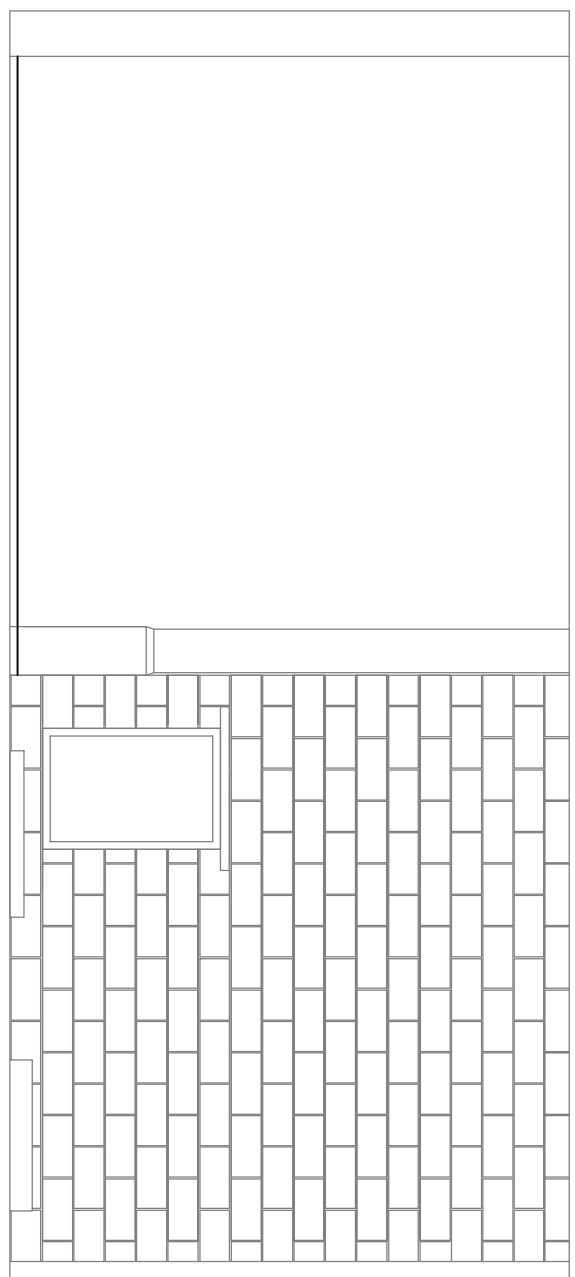


SECTION AA

STAIRCASE TO BE REINFORCED TO SAME AS BEFORE
ROOM WALL TO BE REINFORCED TO SAME AS BEFORE USING SAME MATERIALS



SECTION CC



SECTION BB

REV

DATE

DESCRIPTION

AL1

AL2

CHK

CHK

CHK

CHK

A

20/05/13

PLANT WALLS RESULT TO SUIT REINFORCED PLANT SELECTIONS

JN

DR

DR

DR

DR

REV

DATE

DESCRIPTION

AL1

AL2

CHK

CHK

CHK

CHK

A

20/05/13

PLANT WALLS RESULT TO SUIT REINFORCED PLANT SELECTIONS

JN

DR

DR

DR

DR

REV

DATE

DESCRIPTION

AL1

AL2

CHK

CHK

CHK

CHK

A

20/05/13

PLANT WALLS RESULT TO SUIT REINFORCED PLANT SELECTIONS

JN

DR

DR

DR

DR

Client

ROYAL COLLEGE OF PHYSICIANS

Architect

Drawing Number

7341 P 004

Revision

A

Scale

A1 1:50

A3 N.T.S

A4 N.T.S

Path

J:\7341\WEC\H

Architects Drawing Reference

Title

COHILLED WATER PLANT ROOM

AS PROPOSED

Project

CHILLER REPLACEMENT
111 ST ANDREWS PLACE
REGENTS PARK
LONDON
NW1 4LE

TGA Consulting Engineers LLP

Bldg 3, Gateway 1000, Stevenage, Herts. SG1 2FP.
E: info@tga.co.uk T: 01438 314422

Project

CHILLER REPLACEMENT
111 ST ANDREWS PLACE
REGENTS PARK
LONDON
NW1 4LE

Title

COHILLED WATER PLANT ROOM

AS PROPOSED

Project

CHILLER REPLACEMENT
111 ST ANDREWS PLACE
REGENTS PARK
LONDON
NW1 4LE

TGA Consulting Engineers LLP

Bldg 3, Gateway 1000, Stevenage, Herts. SG1 2FP.
E: info@tga.co.uk T: 01438 314422

Project

CHILLER REPLACEMENT
111 ST ANDREWS PLACE
REGENTS PARK
LONDON
NW1 4LE

Title

COHILLED WATER PLANT ROOM

AS PROPOSED

Project

CHILLER REPLACEMENT
111 ST ANDREWS PLACE
REGENTS PARK
LONDON
NW1 4LE

TGA Consulting Engineers LLP

Bldg 3, Gateway 1000, Stevenage, Herts. SG1 2FP.
E: info@tga.co.uk T: 01438 314422

Project

CHILLER REPLACEMENT
111 ST ANDREWS PLACE
REGENTS PARK
LONDON
NW1 4LE

Title

COHILLED WATER PLANT ROOM

AS PROPOSED

Project

CHILLER REPLACEMENT
111 ST ANDREWS PLACE
REGENTS PARK
LONDON
NW1 4LE

TGA Consulting Engineers LLP

Bldg 3, Gateway 1000, Stevenage, Herts. SG1 2FP.
E: info@tga.co.uk T: 01438 314422

Project

CHILLER REPLACEMENT
111 ST ANDREWS PLACE
REGENTS PARK
LONDON
NW1 4LE

Title

COHILLED WATER PLANT ROOM

AS PROPOSED

Project

CHILLER REPLACEMENT
111 ST ANDREWS PLACE
REGENTS PARK
LONDON
NW1 4LE

TGA Consulting Engineers LLP

Bldg 3, Gateway 1000, Stevenage, Herts. SG1 2FP.
E: info@tga.co.uk T: 01438 314422

Project

CHILLER REPLACEMENT
111 ST ANDREWS PLACE
REGENTS PARK
LONDON
NW1 4LE

Title

COHILLED WATER PLANT ROOM

AS PROPOSED

Project

CHILLER REPLACEMENT
111 ST ANDREWS PLACE
REGENTS PARK
LONDON
NW1 4LE

TGA Consulting Engineers LLP

Bldg 3, Gateway 1000, Stevenage, Herts. SG1 2FP.
E: info@tga.co.uk T: 01438 314422

Project

CHILLER REPLACEMENT
111 ST ANDREWS PLACE
REGENTS PARK
LONDON
NW1 4LE

Title

COHILLED WATER PLANT ROOM

AS PROPOSED

Project

CHILLER REPLACEMENT
111 ST ANDREWS PLACE
REGENTS PARK
LONDON
NW1 4LE

TGA Consulting Engineers LLP

Bldg 3, Gateway 1000, Stevenage, Herts. SG1 2FP.
E: info@tga.co.uk T: 01438 314422

Project

CHILLER REPLACEMENT
111 ST ANDREWS PLACE
REGENTS PARK
LONDON
NW1 4LE

Title

COHILLED WATER PLANT ROOM

AS PROPOSED

Project

CHILLER REPLACEMENT
111 ST ANDREWS PLACE
REGENTS PARK
LONDON
NW1 4LE

TGA Consulting Engineers LLP

Bldg 3, Gateway 1000, Stevenage, Herts. SG1 2FP.
E: info@tga.co.uk T: 01438 314422

Project

CHILLER REPLACEMENT
111 ST ANDREWS PLACE
REGENTS PARK
LONDON
NW1 4LE

Title

COHILLED WATER PLANT ROOM

AS PROPOSED

Project

CHILLER REPLACEMENT
111 ST ANDREWS PLACE
REGENTS PARK
LONDON
NW1 4LE

TGA Consulting Engineers LLP

Bldg 3, Gateway 1000, Stevenage, Herts. SG1 2FP.
E: info@tga.co.uk T: 01438 314422

Project

CHILLER REPLACEMENT
111 ST ANDREWS PLACE
REGENTS PARK
LONDON
NW1 4LE

Title

COHILLED WATER PLANT ROOM

AS PROPOSED

Project

CHILLER REPLACEMENT
111 ST ANDREWS PLACE
REGENTS PARK
LONDON
NW1 4LE

TGA Consulting Engineers LLP

Bldg 3, Gateway 1000, Stevenage, Herts. SG1 2FP.
E: info@tga.co.uk T: 01438 314422

Project

CHILLER REPLACEMENT
111 ST ANDREWS PLACE
REGENTS PARK
LONDON
NW1 4LE

Title

COHILLED WATER PLANT ROOM

AS PROPOSED

Project

CHILLER REPLACEMENT
111 ST ANDREWS PLACE
REGENTS PARK
LONDON
NW1 4LE

TGA Consulting Engineers LLP

Bldg 3, Gateway 1000, Stevenage, Herts. SG1 2FP.
E: info@tga.co.uk T: 01438 314422

Project

CHILLER REPLACEMENT
111 ST ANDREWS PLACE
REGENTS PARK
LONDON
NW1 4LE

Title

COHILLED WATER PLANT ROOM

AS PROPOSED

Project

CHILLER REPLACEMENT
111 ST ANDREWS PLACE
REGENTS PARK
LONDON
NW1 4LE

TGA Consulting Engineers LLP

Bldg 3, Gateway 1000, Stevenage, Herts. SG1 2FP.
E: info@tga.co.uk T: 01438 314422

Project

CHILLER REPLACEMENT
111 ST ANDREWS PLACE
REGENTS PARK
LONDON
NW1 4LE

Title

COHILLED WATER PLANT ROOM

AS PROPOSED

Project

CHILLER REPLACEMENT
111 ST ANDREWS PLACE
REGENTS PARK
LONDON
NW1 4LE

TGA Consulting Engineers LLP

Bldg 3, Gateway 1000, Stevenage, Herts. SG1 2FP.
E: info@tga.co.uk T: 01438 314422

Project

CHILLER REPLACEMENT
111 ST ANDREWS PLACE
REGENTS PARK
LONDON
NW1 4LE

Title

COHILLED WATER PLANT ROOM

AS PROPOSED

Project

CHILLER REPLACEMENT
111 ST ANDREWS PLACE
REGENTS PARK
LONDON
NW1 4LE

TGA Consulting Engineers LLP

Bldg 3, Gateway 1000, Stevenage, Herts. SG1 2FP.
E: info@tga.co.uk T: 01438 314422

Project

CHILLER REPLACEMENT
111 ST ANDREWS PLACE
REGENTS PARK
LONDON
NW1 4LE

Title

COHILLED WATER PLANT ROOM

AS PROPOSED

Project

CHILLER REPLACEMENT
111 ST ANDREWS PLACE
REGENTS PARK
LONDON
NW1 4LE

TGA Consulting Engineers LLP

Bldg 3, Gateway 1000, Stevenage, Herts. SG1 2FP.
E: info@tga.co.uk T: 01438 314422

Project

CHILLER REPLACEMENT
111 ST ANDREWS PLACE
REGENTS PARK
LONDON
NW1 4LE

Title

COHILLED WATER PLANT ROOM

AS PROPOSED

Project

CHILLER REPLACEMENT
111 ST ANDREWS PLACE
REGENTS PARK
LONDON
NW1 4LE

TGA Consulting Engineers LLP

Bldg 3, Gateway 1000, Stevenage, Herts. SG1 2FP.
E: info@tga.co.uk T: 01438 314422

Project

CHILLER REPLACEMENT
111 ST ANDREWS PLACE
REGENTS PARK
LONDON
NW1 4LE

Title

COHILLED WATER PLANT ROOM

AS PROPOSED

Project

CHILLER REPLACEMENT
111 ST ANDREWS PLACE
REGENTS PARK
LONDON
NW1 4LE

TGA Consulting Engineers LLP

Bldg 3, Gateway 1000, Stevenage, Herts. SG1 2FP.
E: info@tga.co.uk T: 01438 314422

Project

CHILLER REPLACEMENT
111 ST ANDREWS PLACE
REGENTS PARK
LONDON
NW1 4LE

Title

COHILLED WATER PLANT ROOM

AS PROPOSED

Project

CHILLER REPLACEMENT
111 ST ANDREWS PLACE
REGENTS PARK
LONDON
NW1 4LE

TGA Consulting Engineers LLP

Bldg 3, Gateway 1000, Stevenage, Herts. SG1 2FP.
E: info@tga.co.uk T: 01438 314422

Project

CHILLER REPLACEMENT
111 ST ANDREWS PLACE
REGENTS PARK
LONDON
NW1 4LE

Title

COHILLED WATER PLANT ROOM

AS PROPOSED

Project

CHILLER REPLACEMENT
111 ST ANDREWS PLACE
REGENTS PARK
LONDON
NW1 4LE

TGA Consulting Engineers LLP

Bldg 3, Gateway 1000, Stevenage, Herts. SG1 2FP.
E: info@tga.co.uk T: 01438 314422

Project

CHILLER REPLACEMENT
111 ST ANDREWS PLACE
REGENTS PARK
LONDON
NW1 4LE

Title

COHILLED WATER PLANT ROOM

AS PROPOSED

Project

CHILLER REPLACEMENT
111 ST ANDREWS PLACE
REGENTS PARK
LONDON
NW1 4LE

TGA Consulting Engineers LLP

Bldg 3, Gateway 1000, Stevenage, Herts. SG1 2FP.
E: info@tga.co.uk T: 01438 314422

Project

CHILLER REPLACEMENT
111 ST ANDREWS PLACE
REGENTS PARK
LONDON
NW1 4LE

Title

COHILLED WATER PLANT ROOM

AS PROPOSED

Project

CHILLER REPLACEMENT
111 ST ANDREWS PLACE
REGENTS PARK
LONDON
NW1 4LE

TGA Consulting Engineers LLP

Bldg 3, Gateway 1000, Stevenage, Herts. SG1 2FP.
E: info@tga.co.uk T: 01438 314422

Project

CHILLER REPLACEMENT
111 ST ANDREWS PLACE
REGENTS PARK
LONDON
NW1 4LE

Title

COHILLED WATER PLANT ROOM

AS PROPOSED

Project

CHILLER REPLACEMENT
111 ST ANDREWS PLACE
REGENTS PARK
LONDON
NW1 4LE

TGA Consulting Engineers LLP

Bldg 3, Gateway 1000, Stevenage, Herts. SG1 2FP.
E: info@tga.co.uk T: 01438 314422

Project

CHILLER REPLACEMENT
111 ST ANDREWS PLACE
REGENTS PARK
LONDON
NW1 4LE

Title

COHILLED WATER PLANT ROOM

AS PROPOSED

Project

CHILLER REPLACEMENT
111 ST ANDREWS PLACE
REGENTS PARK
LONDON
NW1 4LE

TGA Consulting Engineers LLP

Bldg 3, Gateway 1000, Stevenage, Herts. SG1 2FP.
E: info@tga.co.uk T: 01438 314422

Project

CHILLER REPLACEMENT
111 ST ANDREWS PLACE
REGENTS PARK
LONDON
NW1 4LE

Title

COHILLED WATER PLANT ROOM

AS PROPOSED

Project

CHILLER REPLACEMENT
111 ST ANDREWS PLACE
REGENTS PARK
LONDON
NW1 4LE

TGA Consulting Engineers LLP

Bldg 3, Gateway 1000, Stevenage, Herts. SG1 2FP.
E: info@tga.co.uk T: 01438 314422

Project

CHILLER REPLACEMENT
111 ST ANDREWS PLACE
REGENTS PARK
LONDON
NW1 4LE

Title

COHILLED WATER PLANT ROOM

AS PROPOSED

Project

CHILLER REPLACEMENT
111 ST ANDREWS PLACE
REGENTS PARK
LONDON
NW1 4LE

TGA Consulting Engineers LLP

Bldg 3, Gateway 1000, Stevenage, Herts. SG1 2FP.
E: info@tga.co.uk T: 01438 314422

Project

CHILLER REPLACEMENT
111 ST ANDREWS PLACE
REGENTS PARK
LONDON
NW1 4LE

Title

COHILLED WATER PLANT ROOM

AS PROPOSED

Project

CHILLER REPLACEMENT
111 ST ANDREWS PLACE
REGENTS PARK
LONDON
NW1 4LE

TGA Consulting Engineers LLP

Bldg 3, Gateway 1000, Stevenage, Herts. SG1 2FP.
E: info@tga.co.uk T: 01438 314422

Project

CHILLER REPLACEMENT
111 ST ANDREWS PLACE
REGENTS PARK
LONDON
NW1 4LE

Title

COHILLED WATER PLANT ROOM

AS PROPOSED

Project

CHILLER REPLACEMENT
111 ST ANDREWS PLACE
REGENTS PARK
LONDON
NW1 4LE

TGA Consulting Engineers LLP

Bldg 3, Gateway 1000, Stevenage, Herts. SG1 2FP.
E: info@tga.co.uk T: 01438 314422

Project

CHILLER REPLACEMENT
111 ST ANDREWS PLACE
REGENTS PARK
LONDON
NW1 4LE

Title

COHILLED WATER PLANT ROOM

AS PROPOSED

Project

CHILLER REPLACEMENT
111 ST ANDREWS PLACE
REGENTS PARK
LONDON
NW1 4LE

TGA Consulting Engineers LLP

Bldg 3, Gateway 1000, Stevenage, Herts. SG1 2FP.
E: info@tga.co.uk T: 01438 314422

Project

CHILLER REPLACEMENT
111 ST ANDREWS PLACE
REGENTS PARK
LONDON
NW1 4LE

Title

COHILLED WATER PLANT ROOM

AS PROPOSED

Project

CHILLER REPLACEMENT
111 ST ANDREWS PLACE
REGENTS PARK
LONDON
NW1 4LE

TGA Consulting Engineers LLP

Bldg 3, Gateway 1000, Stevenage, Herts. SG1 2FP.
E: info@tga.co.uk T: 01438 314422

Project

CHILLER REPLACEMENT
111 ST ANDREWS PLACE
REGENTS PARK
LONDON
NW1 4LE

Title

COHILLED WATER PLANT ROOM

AS PROPOSED

Project

CHILLER REPLACEMENT
111 ST ANDREWS PLACE
REGENTS PARK
LONDON
NW1 4LE

TGA Consulting Engineers LLP

Bldg 3, Gateway 1000, Stevenage, Herts. SG1 2FP.
E: info@tga.co.uk T: 01438 314422

Project

CHILLER REPLACEMENT
111 ST ANDREWS PLACE
REGENTS PARK
LONDON
NW1 4LE

Title

COHILLED WATER PLANT ROOM

AS PROPOSED

Project

CHILLER REPLACEMENT
111 ST ANDREWS PLACE
REGENTS PARK
LONDON
NW1 4LE

TGA Consulting Engineers LLP

Bldg 3, Gateway 1000, Stevenage, Herts. SG1 2FP.
E: info@tga.co.uk T: 01438 314422

Project

CHILLER REPLACEMENT
111 ST ANDREWS PLACE
REGENTS PARK
LONDON
NW1 4LE

Title

COHILLED WATER PLANT ROOM

AS PROPOSED

Project

CHILLER REPLACEMENT
111 ST ANDREWS PLACE
REGENTS PARK
LONDON
NW1 4LE

TGA Consulting Engineers LLP

Bldg 3, Gateway 1000, Stevenage, Herts. SG1 2FP.
E: info@tga.co.uk T: 01438 314422

Project

CHILLER REPLACEMENT
111 ST ANDREWS PLACE
REGENTS PARK
LONDON
NW1 4LE

Title

COHILLED WATER PLANT ROOM

AS PROPOSED

Project

CHILLER REPLACEMENT
111 ST ANDREWS PLACE
REGENTS PARK
LONDON
NW1 4LE

TGA Consulting Engineers LLP

Bldg 3, Gateway 1000, Stevenage, Herts. SG1 2FP.
E: info@tga.co.uk T: 01438 314422

Project

CHILLER REPLACEMENT
111 ST ANDREWS PLACE
REGENTS PARK
LONDON
NW1 4LE

Title

COHILLED WATER PLANT ROOM

AS PROPOSED

Project

CHILLER REPLACEMENT
111 ST ANDREWS PLACE
REGENTS PARK
LONDON
NW1 4LE

TGA Consulting Engineers LLP

Bldg 3, Gateway 1000, Stevenage, Herts. SG1 2FP.
E: info@tga.co.uk T: 01438 314422

Project

CHILLER REPLACEMENT
111 ST ANDREWS PLACE
REGENTS PARK
LONDON
NW1 4LE

Title

COHILLED WATER PLANT ROOM

AS PROPOSED

Project

CHILLER REPLACEMENT
111 ST ANDREWS PLACE
REGENTS PARK
LONDON
NW1 4LE

TGA Consulting Engineers LLP

Bldg 3, Gateway 1000, Stevenage, Herts. SG1 2FP.
E: info@tga.co.uk T: 01438 314422

Project

CHILLER REPLACEMENT
111 ST ANDREWS PLACE
REGENTS PARK
LONDON
NW1 4LE

Title

COHILLED WATER PLANT ROOM

AS PROPOSED

Project

CHILLER REPLACEMENT
111 ST ANDREWS PLACE
REGENTS PARK
LONDON
NW1 4LE

TGA Consulting Engineers LLP

Bldg 3, Gateway 1000, Stevenage, Herts. SG1 2FP.
E: info@tga.co.uk T: 01438 314422

Project

CHILLER REPLACEMENT
111 ST ANDREWS PLACE
REGENTS PARK
LONDON
NW1 4LE

Title

COHILLED WATER PLANT ROOM

AS PROPOSED

Project

CHILLER REPLACEMENT
111 ST ANDREWS PLACE
REGENTS PARK
LONDON
NW1 4LE

TGA Consulting Engineers LLP

Bldg 3, Gateway 1000, Stevenage, Herts. SG1 2FP.
E: info@tga.co.uk T: 01438 314422

Project

CHILLER REPLACEMENT
111 ST ANDREWS PLACE
REGENTS PARK
LONDON
NW1 4LE

Title

COHILLED WATER PLANT ROOM

AS PROPOSED

Project

CHILLER REPLACEMENT
111 ST ANDREWS PLACE
REGENTS PARK
LONDON
NW1 4LE

TGA Consulting Engineers LLP

Bldg 3, Gateway 1000, Stevenage, Herts. SG1 2FP.
E: info@tga.co.uk T: 01438 314422

Project

CHILLER REPLACEMENT
111 ST ANDREWS PLACE
REGENTS PARK
LONDON
NW1 4LE

Title

COHILLED WATER PLANT ROOM

AS PROPOSED

Project

CHILLER REPLACEMENT
111 ST ANDREWS PLACE
REGENTS PARK
LONDON
NW1 4LE

TGA Consulting Engineers LLP

Bldg 3, Gateway 1000, Stevenage, Herts. SG1 2FP.
E: info@tga.co.uk T: 01438 314422

Project

CHILLER REPLACEMENT
111 ST ANDREWS PLACE
REGENTS PARK
LONDON
NW1 4LE

Title

COHILLED WATER PLANT ROOM

AS PROPOSED

Project

CHILLER REPLACEMENT
111 ST ANDREWS PLACE
REGENTS PARK
LONDON
NW1 4LE

TGA Consulting Engineers LLP

Bldg 3, Gateway 1000, Stevenage, Herts. SG1 2FP.
E: info@tga.co.uk T: 01438 314422

Project

CHILLER REPLACEMENT
111 ST ANDREWS PLACE
REGENTS PARK
LONDON
NW1 4LE

Title

COHILLED WATER PLANT ROOM

AS PROPOSED

Project

CHILLER REPLACEMENT
111 ST ANDREWS PLACE
REGENTS PARK
LONDON
NW1 4LE

TGA Consulting Engineers LLP

Bldg 3, Gateway 1000, Stevenage, Herts. SG1 2FP.
E: info@tga.co.uk T: 01438 314422

Project

CHILLER REPLACEMENT
111 ST ANDREWS PLACE
REGENTS PARK
LONDON
NW1 4LE

Title

COHILLED WATER PLANT ROOM

AS PROPOSED

Project

CHILLER REPLACEMENT
111 ST ANDREWS PLACE
REGENTS PARK
LONDON
NW1 4LE

TGA Consulting Engineers LLP

Bldg 3, Gateway 1000, Stevenage, Herts. SG1 2FP.
E: info@tga.co.uk T: 01438 314422

Project

CHILLER REPLACEMENT
111 ST ANDREWS PLACE
REGENTS PARK
LONDON
NW1 4LE

Title

COHILLED WATER PLANT ROOM

AS PROPOSED

Project

CHILLER REPLACEMENT
111 ST ANDREWS PLACE
REGENTS PARK
LONDON
NW1 4LE

TGA Consulting Engineers LLP

Bldg 3, Gateway 1000, Stevenage, Herts. SG1 2FP.
E: info@tga.co.uk T: 01438 314422

Project

CHILLER REPLACEMENT
111 ST ANDREWS PLACE
REGENTS PARK
LONDON
NW1 4LE

Title

COHILLED WATER PLANT ROOM

AS PROPOSED

Project

CHILLER REPLACEMENT
111 ST ANDREWS PLACE
REGENTS PARK
LONDON
NW1 4LE

TGA Consulting Engineers LLP

Bldg 3, Gateway 1000, Stevenage, Herts. SG1 2FP.
E: info@tga.co.uk T: 01438 314422

Project

CHILLER REPLACEMENT
111 ST ANDREWS PLACE
REGENTS PARK
LONDON
NW1 4LE

Title

COHILLED WATER PLANT ROOM

AS PROPOSED

Project

CHILLER REPLACEMENT
111 ST ANDREWS PLACE
REGENTS PARK
LONDON
NW1 4LE

TGA Consulting Engineers LLP

Bldg 3, Gateway 1000, Stevenage, Herts. SG1 2FP.