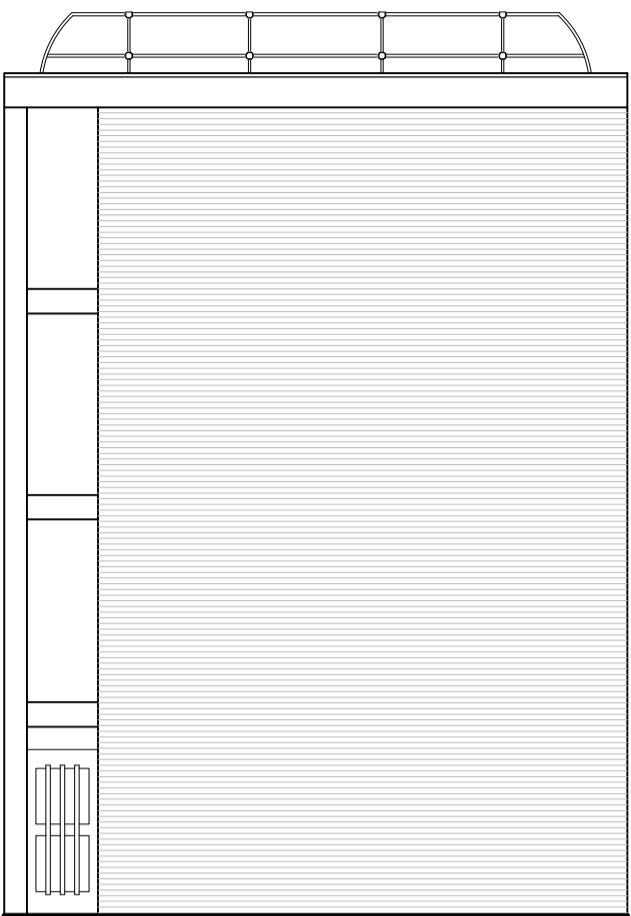
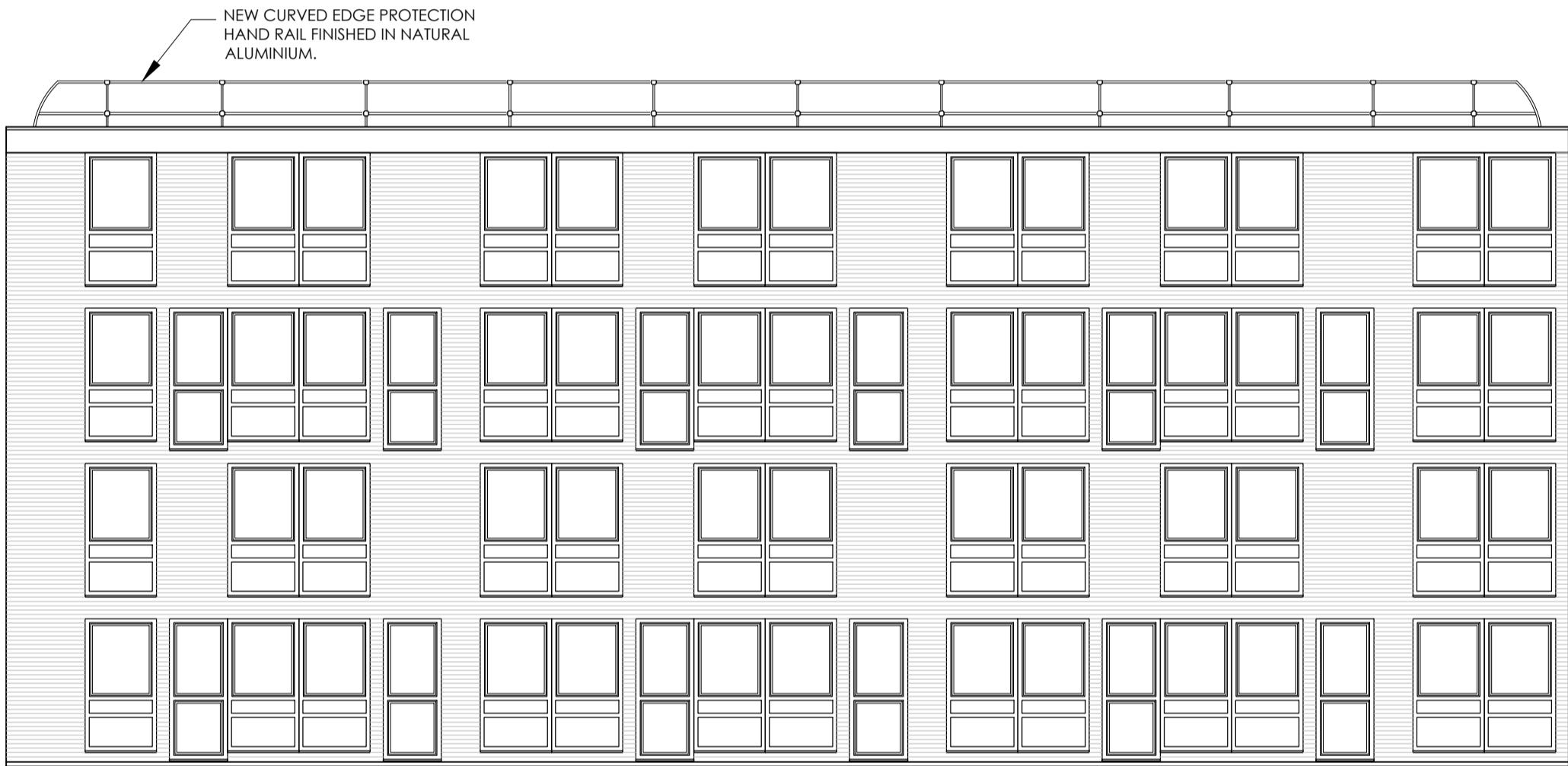


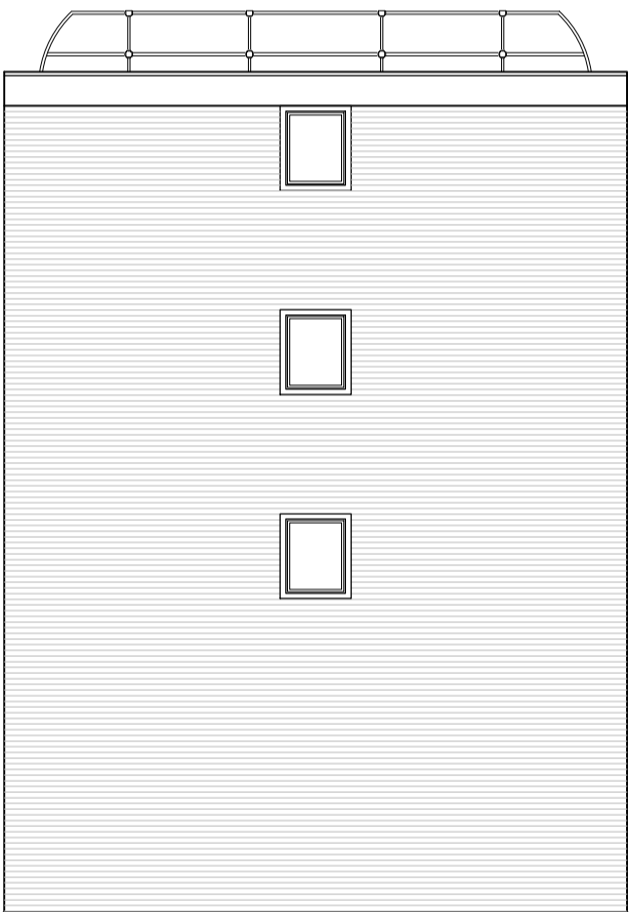
FRONT ELEVATION



RIGHT HAND ELEVATION



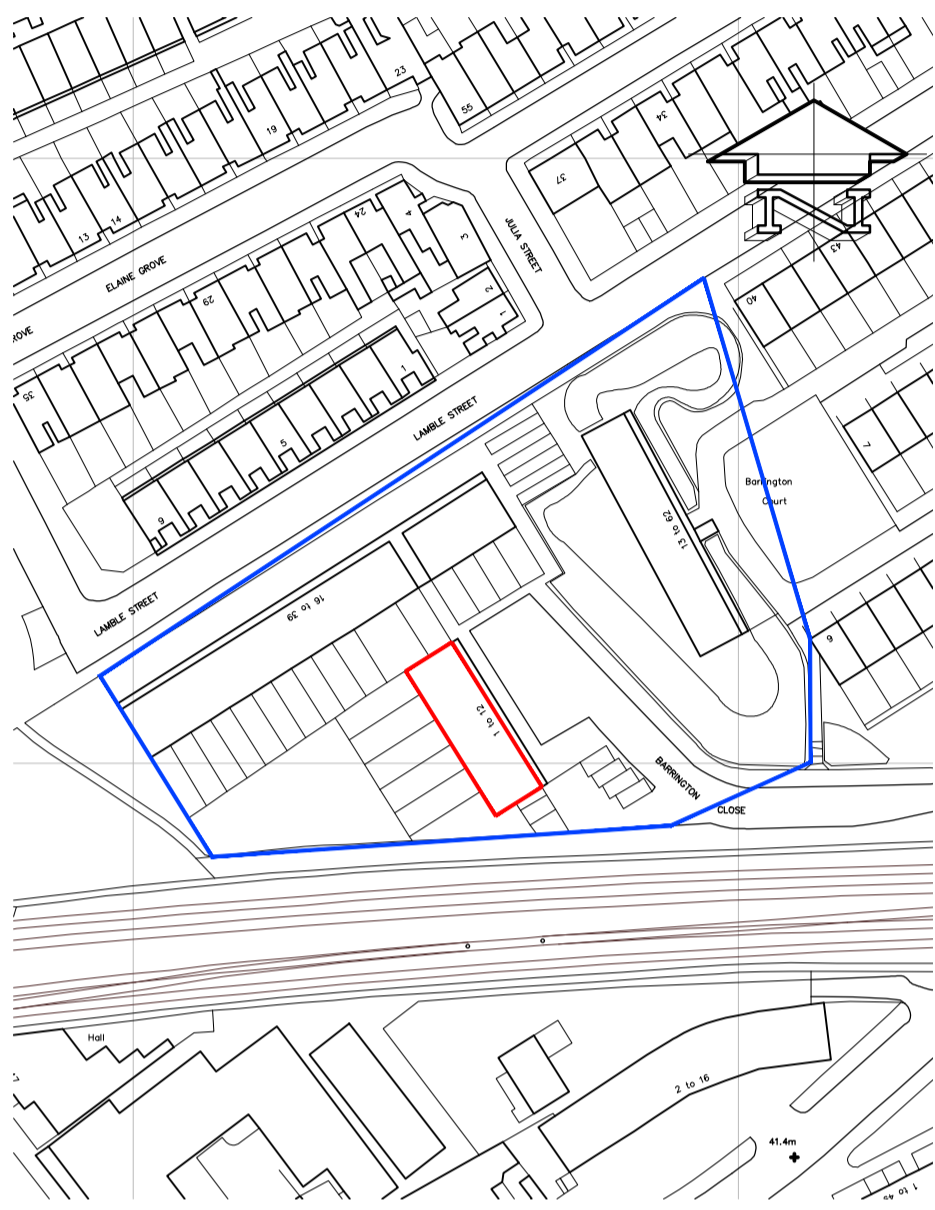
REAR ELEVATION



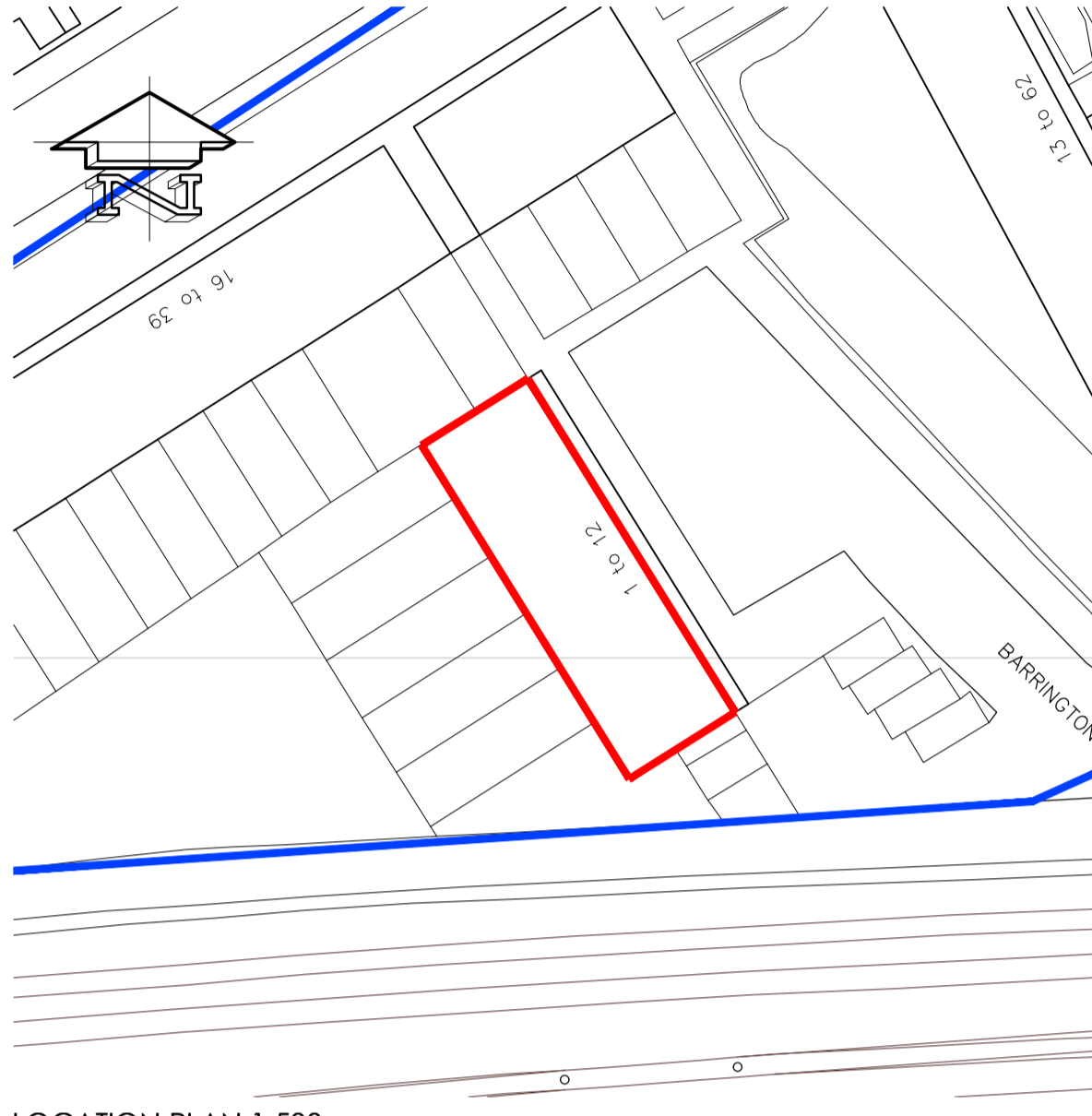
LEFT HAND ELEVATION



ROOF PLAN



LOCATION PLAN 1:1250



LOCATION PLAN 1:500

FREESTANDING SAFETY GUARDRAIL SYSTEM

VERSIRAIL FREESTANDING SAFETY GUARDRAIL SYSTEM FOR USE ON NEW AND EXISTING BUILDINGS WITH WORKING PLATFORMS, ROOFS OR TECHNICAL TERRACES HAVING SLOPES BETWEEN 0° AND 10° AND NO PUBLIC ACCESS. FOLDING OPTION AVAILABLE; CONTACT LATCHWAYS. COMPRISING STRAIGHT, CURVED WITH HAND AND KNEERAILS, ALL CONNECTED VIA EZ-FIX CLAMPING SYSTEM TO ALLOW FAST ASSEMBLY AND ACCURATE LEVEL ADJUSTMENT. NO REQUIREMENT FOR DRILLING, THE SYSTEM IS MOUNTED DIRECTLY ON THE PLATFORM.

COMPLIES WITH REQUIREMENTS OF EN 13374 AND EN ISO 14122-3, SECTION 8.2, AND CONFORMS TO EUROPEAN DIRECTIVE 2001/45/CE.

TECHNICAL PRODUCT SPECIFICATION

UPRIGHTS:

- PROFILE:
 - CURVED: 1150 MM HIGH.
 - MAXIMUM CENTRES: BETWEEN UPRIGHTS: 2.5 M, 2M FOR FOLDING VERSIRAIL.

CONNECTING ELEMENTS:

- JUNCTION PART; CONNECTS LENGTHS LINEARLY.

T JUNCTION; CONNECTS HANDRAIL ELEMENTS TO FORM RIGHT ANGLED CONNECTIONS

HANDRAILS:

40 MM DIAMETER ALUMINIUM

CORNER SECTIONS:

- 90° CORNER SECTION; FOR USE WHERE RIGHT ANGLES ARE REQUIRED IN HANDRAILS.

END PARTS:

- CLOSURE BEND; FOR USE WHERE HANDRAIL TERMINATES BUT CANNOT BE ATTACHED TO BUILDING. CONNECTS HANDRAIL TO KNEERAIL. CAN ALSO FORM DESIGNATED OPENING IN RAIL. REQUIRES INSTALLATION OF AN UPRIGHT WITH TWO COUNTERWEIGHTS (22030-00 FOR SINGLE COUNTERWEIGHT; 22031-00 FOR ADDITIONAL COUNTERWEIGHT).

- WALL END PIECE; FOR TERMINATION AT SUPPORTING WALL, PARAPET OR OTHER STRUCTURE. FIXING IS BY 4NO. M5 DIAMETER SCREWS.

MAXIMUM CENTRES:

BETWEEN HAND AND KNEERAIL AND PARAPET/ KICKBOARD: 500 MM.

KICKBOARDS:

- REQUIRED WHERE THERE IS NO PARAPET OR WHERE HEIGHT OF PARAPET IS LESS THAN 100 MM.
- SUPPLIED WITH ATTACHING KIT.

PLANNING

REV	DATE	DESCRIPTION	BY	APP'D
A	29/05/2013	LOCATION AND SITE PLAN AMENDED. ROOF PLAN ADDED AND GREEN ROOF OMITTED.	tal	

CLIENT	Apollo London Limited Conquest House, Church Street, Waltham Abbey, Essex EN9 1DX. Tel: 01992 650333 Fax: 01992 650999
--------	---

PROJECT	1-12 BARRINGTON CLOSE REFURBISHMENT.
---------	---

DRAWING TITLE	PROPOSED ELEVATIONS.
---------------	-----------------------------

DATE	15/05/2013	DWG. No.	3308.101	REV.	A
SCALE	1:100 (A1)				
DRAWN BY:	TAL	DATED			
CHECKED BY:		DATED			
APPROVAL BY:		DATED			

AK DESIGN PARTNERSHIP LLP CHARTERED BUILDING CONSULTANCY BUILDING SURVEYORS BUILDING DESIGNERS PROJECT MANAGERS	 111-113 VICTORIA ROAD ROMFORD ESSEX RM1 2LX	TEL: 01708 751772 FAX: 01708 764056 E-MAIL: office@akdesign.co.uk WEB SITE: www.akdesign.co.uk
--	---	---