







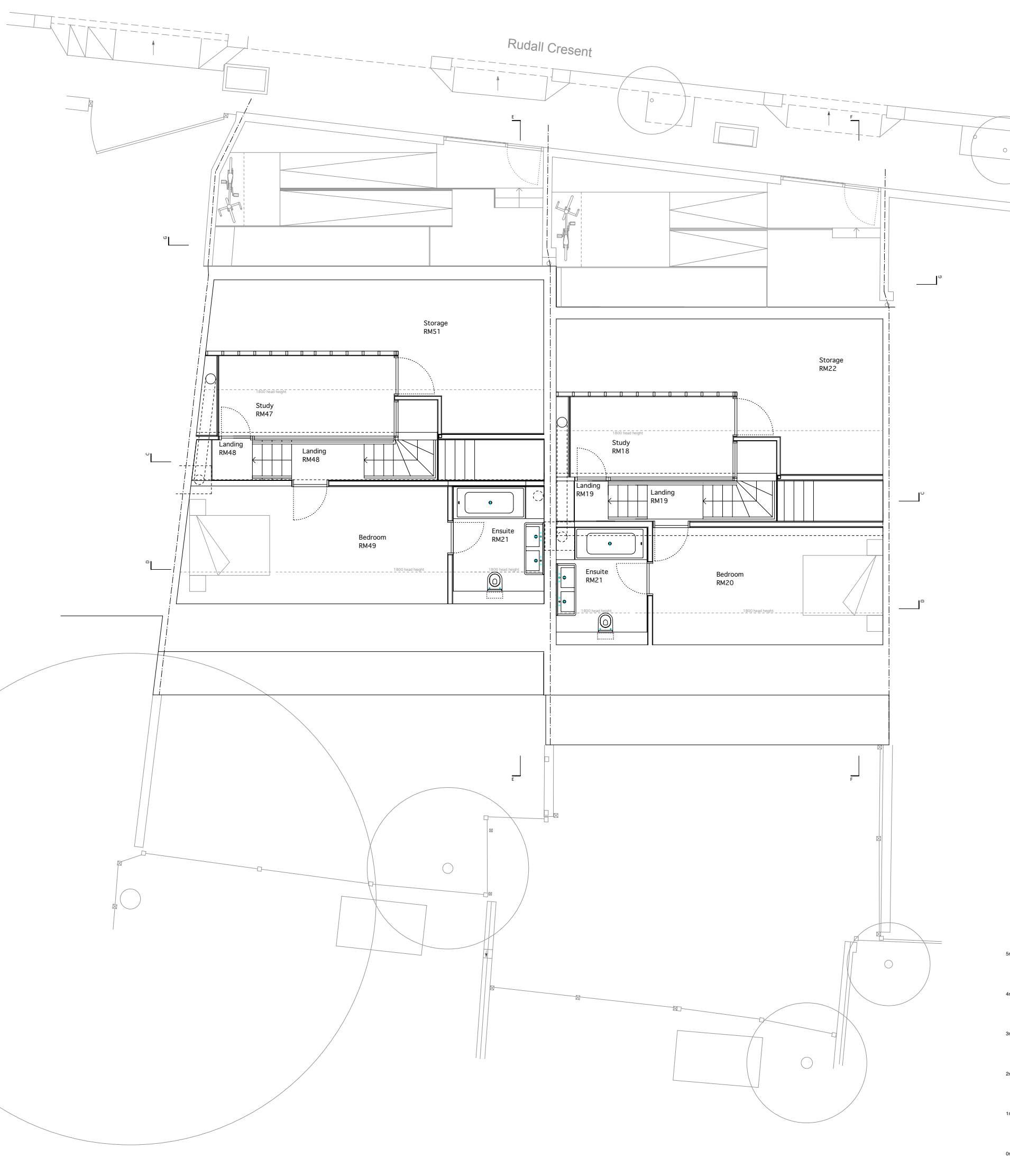
- SERVICES KEY**
- IC security contact sensor
  - PIR security movement sensor
  - MSR movement sensor switch
  - KS security keypad
  - AS alarm sounder
  - APC alarm control panel
  - PB panic button
  - ELEC electricity meter
  - CU consumer unit
  - GAS gas meter
  - EF extract fan
  - SD smoke detector
  - MFB main fire battery
  - HD heat detector
  - SS surface mounted spot
  - DLV directional LV recessed
  - LV recessed downlighter
  - PF66 external recessed downlighter
  - SL standing lamp
  - P pendant light
  - WM wall mounted lights
  - FB fluorescent batten
  - M mirror light
  - EL external uplighter
  - SPR spread into ground
  - EW external wall mounted light fitting
  - LED LED Lighting
  - Linear Wall Light
  - DL Double LED Light fitting
  - LL low level wash light
  - KUC kitchen under cupboard light
  - 1G/1 1 gang / 1 way switch
  - 1G/2 1 gang / 2 way switch
  - 2G/1 2 gang / 1 way switch
  - 1G/2 1 gang / 2 way switch
  - CS contact switch
  - SSO single switched sct outlet
  - 5SO 5amp socket outlet
  - DSB double switched sct outlet
  - PS power socket in floorbox
  - SP spur outlet
  - SS switched spur outlet
  - SSH shaver socket outlet
  - EP66 external socket outlet
  - EP60 external floor recessed light
  - SCATS SCATS (back box)
  - APD audio doorphone unit
  - ICAT ICAT
  - WIFI WIFI
  - WIFI WIFI position 2x CAT5 from 150mm/500mm points
  - ASO aerial socket with double outlet
  - SKY SKY TV box / outlet
  - SKY SKY TV outlet - SLAVE to main box
  - TR tower rail
  - RAD-A radiator type A
  - RAD-B radiator type B
  - UFH underfloor heating electric mat
  - UFH underfloor heating hw pipework
  - CW external tap, cold water
  - HW external tap, warm water
  - SR speakers recessed in ceiling
  - SW speakers wall mounted
  - SRF speakers freestanding (powered)
  - SSO speaker socket
  - AA audio authority plate
  - DD double door
  - AD audio authority distributor
  - WSS wall mounted speaker switch
  - 45mm 45mm single backbox
  - F flat screen LCD TV
  - FM floor mounted
  - HL high level

- REFERENCES KEY**
- EXC- Excavation
  - DEMO- Demolition
  - RM- Room
  - DRA- Drainage run above ground
  - DRB- Drainage run below ground
  - DP- Damp proofing
  - WP- Water proofing
  - BM- Beam
  - COL- Column
  - PS- Padstone
  - SLAB- Concrete slab
  - SCREED- Concrete screed
  - PAD- Concrete pad
  - FOUND- Concrete foundation
  - ROOF- Roof build-up
  - LT- Lintel
  - BK- Masonry work
  - COP- Coping
  - CL- Cill
  - LD- Leadwork
  - TJ- Timber joists
  - TR- Timber rafters
  - TF- Timber frame
  - SP- Stud partition
  - SF- Stair flight
  - SFEX- Stair flight external
  - BAL- Balustrade
  - SK- Skirting
  - W- Window
  - CL- Ceiling
  - CO- Coving
  - CR- Ceiling Rose
  - D- Door
  - DE- Door existing
  - J- Joinery
  - FL- Finished Floor
  - DADO- Dado rail
  - WF- Wall Finish
  - WB- Window Blind
  - MH- Man hole
  - RWP- Rain water pipe
  - RWO- Rain water outlet
  - RWG- Rain water gutter
  - SVP- Soil and vent pipe
  - HOP- Hopper head
  - GUL- Gully
  - BL- Boiler
  - CYL- Hot water cylinder
  - RAD- Radiator
  - RAD HTR- Heated towel radiator
  - WM- Washing machine
  - DRY- Drier
  - HOB- Hob
  - DUCT- Vent duct

5m  
4m  
3m  
2m  
1m  
0m

Drawing to be read in conjunction with consultants information.  
Do not scale from drawing.  
All dimensions to be checked on site.  
Drawing only to be used for purposes indicated.  
Not to be used for any other purposes.  
© WEBB ARCHITECTS LIMITED

REV-  
A- 23.01.12- Title revised, references added, structure added  
B- 13.02.12- Flue added, recesses added  
D- 18.12.12- Rear windows left as existing  
E- 08.05.13 Cherry tree added  
F- 08.05.13 Revised ramps



- SERVICES KEY**
- IC security contact sensor
  - PIR security movement sensor
  - MSR movement sensor switch
  - KS security keypad
  - AS alarm sounder
  - AP alarm control panel
  - PS panic button
  - ELEC electricity meter
  - CU consumer unit
  - GAS gas meter
  - EF extract fan
  - SD smoke detector
  - MFB main fire battery backup
  - HD heat detector
  - SS surface mounted spot
  - DLV directional LV recessed
  - LV recessed downlighter
  - PF66 external recessed downlighter
  - SL standing lamp
  - P pendant light
  - WM wall mounted lights
  - FB fluorescent batten
  - ML mirror light
  - EL external uplighter
  - SPK speaker into ground
  - EW external wall mounted light fitting
  - LED LED Lighting
  - Linear Wall Light
  - DL Double LED Light fitting
  - LL low level wash light
  - UC kitchen under cupboard light
  - 1G/1W 1 gang / 1 way switch
  - 1G/1WD 1 gang / 1 way dimmer switch
  - 2G/1W 2 gang / 1 way switch
  - 1G/2W 1 gang / 2 way switch
  - CS contact switch
  - SSO single switched sct outlet
  - SS double switched sct outlet
  - PS power socket in floorbox
  - SP spur outlet
  - SS switched spur outlet
  - SS shower socket outlet
  - PF66 external socket outlet
  - PF60 external floor recessed light
  - SCATS SCATS (single back box)
  - SCATS SCATS (double back box)
  - TE telephone unit
  - SKY SKY TV outlet
  - SKY SKY TV outlet - SLAVE to main box
  - TR tower rail
  - RAD-A radiator type A
  - RAD-B radiator type B
  - UFH underfloor heating electric mat
  - UFH underfloor heating hw pipework
  - CW external tap, cold water
  - HW external tap, warm water
  - SR speakers recessed in ceiling
  - SRW speakers freestanding (powered)
  - SS speaker socket
  - SS speaker socket plate
  - SS double socket
  - AD audio authority distributor
  - SS wall mounted speaker switch
  - SS 45mm single backbox
  - F flat screen LCD TV
  - FL floor mounted
  - HL high level

- REFERENCES KEY**
- EXC- Excavation
  - DEMO- Demolition
  - RM- Room
  - DR- Drainage run above ground
  - DB- Drainage run below ground
  - DP- Damp proofing
  - WP- Water proofing
  - BM- Beam
  - COL- Column
  - PS- Padstone
  - SLAB- Concrete slab
  - SCREED- Concrete screed
  - PAD- Concrete pad
  - FOUND- Concrete foundation
  - ROOF- Roof build-up
  - LT- Lintel
  - BK- Masonry work
  - COP- Coping
  - CL- Cill
  - LD- Leadwork
  - TJ- Timber joists
  - TR- Timber rafters
  - TF- Timber frame
  - SP- Stud partition
  - SF- Stair flight
  - SFEX- Stair flight external
  - BAL- Balustrade
  - SK- Skirting
  - W- Window
  - CL- Ceiling
  - CO- Coving
  - CR- Ceiling Rose
  - D- Door
  - DE- Door existing
  - J- Joinery
  - FL- Finished Floor
  - DADO- Dado rail
  - WF- Wall Finish
  - WB- Window Blind
  - MH- Man hole
  - RWP- Rain water pipe
  - RWO- Rain water outlet
  - RWG- Rain water gutter
  - SVP- Soil and vent pipe
  - HOP- Hopper head
  - GUL- Gully
  - BL- Boiler
  - CYL- Hot water cylinder
  - RAD- Radiator
  - RAD HTR- Heated towel radiator
  - WM- Washing machine
  - DRY- Drier
  - HOB- Hob
  - DUCT- Vent duct

Drawing to be read in conjunction with consultants information.  
Do not scale from drawing.  
All dimensions to be checked on site.  
Drawing only to be used for purposes indicated.  
Not to be used for any other purpose.  
© WEBB ARCHITECTS LIMITED

REV-  
A- 23.01.12- Title revised, references added, structure added  
B- 13.02.12- Flue added, joinery added  
C- 22.11.12- Chimney position altered  
E- 08.02.13 Cherry tree added  
F- 08.05.13 Revised ramps



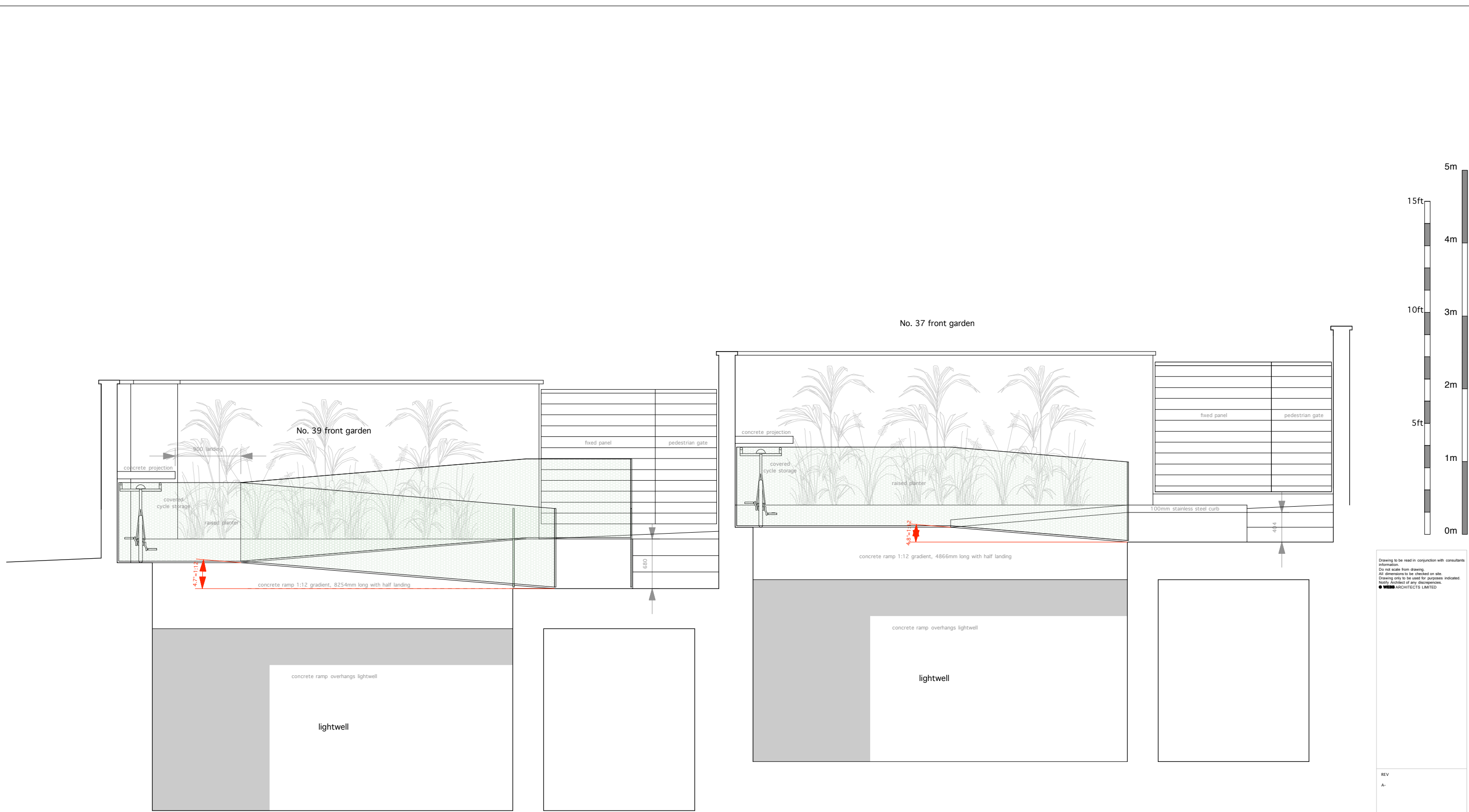
- SERVICES KEY**
- IC security contact sensor
  - PIR security movement sensor
  - MSR movement sensor switch
  - PK security keypad
  - AS alarm sounder
  - AP alarm control panel
  - PB panic button
  - ELEC electricity meter
  - CU consumer unit
  - GAS gas meter
  - EF extract fan
  - SD smoke detector
  - MFB main fire battery
  - HD heat detector
  - SS surface mounted spot
  - DLV directional LV recessed
  - LV recessed downlighter
  - PF66 external recessed downlighter
  - SL standing lamp
  - P pendant light
  - WM wall mounted lights
  - FB fluorescent batten
  - M mirror light
  - EL external uplighter
  - SPK spread into ground
  - EW external wall mounted light fitting
  - LED LED Lighting
  - Linear Wall Light
  - DL Double LED Light fitting
  - LL low level wash light
  - UC kitchen under cupboard light
  - 1G 1 gang / 1 way switch
  - 1GD 1 gang / 1 way dimmer switch
  - 2G 2 gang / 1 way switch
  - 1GD 1 gang / 2 way switch
  - CS contact switch
  - SS single switched sct outlet
  - 5amp socket outlet
  - DS double switched sct outlet
  - PS power socket in floorbox
  - SO spur outlet
  - SS switched spur outlet
  - SH shaver socket outlet
  - PS external socket outlet
  - PF66 external floor recessed light
  - PS external floor recessed light
  - SCATS SCATS (4000) back box
  - SCATS SCATS (4000) points
  - TE audio doorphone unit
  - ICRS ICRS
  - WIFI WIFI position 2x CAT5 from 1750mm/550mm points
  - AS aerial socket with double outlet
  - SKY SKY TV box / outlet
  - SKY SKY TV outlet - SLAVE to main box
  - TR towel rail
  - RAD-A radiator type A
  - RAD-B radiator type B
  - UF underfloor heating
  - EM electric mat
  - UF underfloor heating hw pipework
  - CW external tap, cold water
  - HW external tap, warm water
  - SL speakers recessed in ceiling
  - WS speakers wall mounted
  - FS speakers freestanding (powered)
  - SS speaker socket
  - AS audio authority plate
  - AS audio authority distributor
  - WS wall mounted speaker switch
  - 45mm 45mm single backbox
  - FT flat screen LCD TV
  - F floor mounted
  - HL high level

- REFERENCES KEY**
- EXC- Excavation
  - DEMO- Demolition
  - RM- Room
  - DRA- Drainage run above ground
  - DRB- Drainage run below ground
  - DP- Damp proofing
  - WP- Water proofing
  - BM- Beam
  - COL- Column
  - PS- Padstone
  - SLAB- Concrete slab
  - SCREED- Concrete screed
  - PAD- Concrete pad
  - FOUND- Concrete foundation
  - ROOF- Roof build-up
  - LT- Lintel
  - BK- Masonry work
  - COP- Coping
  - CL- Cill
  - LD- Leadwork
  - TJ- Timber joists
  - TR- Timber rafters
  - TF- Timber frame
  - SP- Stud partition
  - SF- Stair flight
  - SFEX- Stair flight external
  - BAL- Balustrade
  - SK- Skirting
  - W- Window
  - CL- Ceiling
  - CO- Coving
  - CR- Ceiling Rose
  - D- Door
  - DE- Door existing
  - J- Joinery
  - FL- Finished Floor
  - DADO- Dado rail
  - WF- Wall Finish
  - WB- Window Blind
  - MH- Man hole
  - RWP- Rain water pipe
  - RWO- Rain water outlet
  - RWG- Rain water gutter
  - SVP- Soil and vent pipe
  - HOP- Hopper head
  - GUL- Gully
  - BL- Boiler
  - CYL- Hot water cylinder
  - RAD- Radiator
  - RAD HTR- Heated towel radiator
  - WM- Washing machine
  - DRY- Drier
  - HOB- Hob
  - DUCT- Vent duct

5m  
4m  
3m  
2m  
1m  
0m

Drawing to be read in conjunction with consultants information.  
Do not scale from drawing.  
All dimensions to be checked on site.  
Drawing only to be used for purposes indicated.  
Not to be used for any other purpose.  
© WEBB ARCHITECTS LIMITED

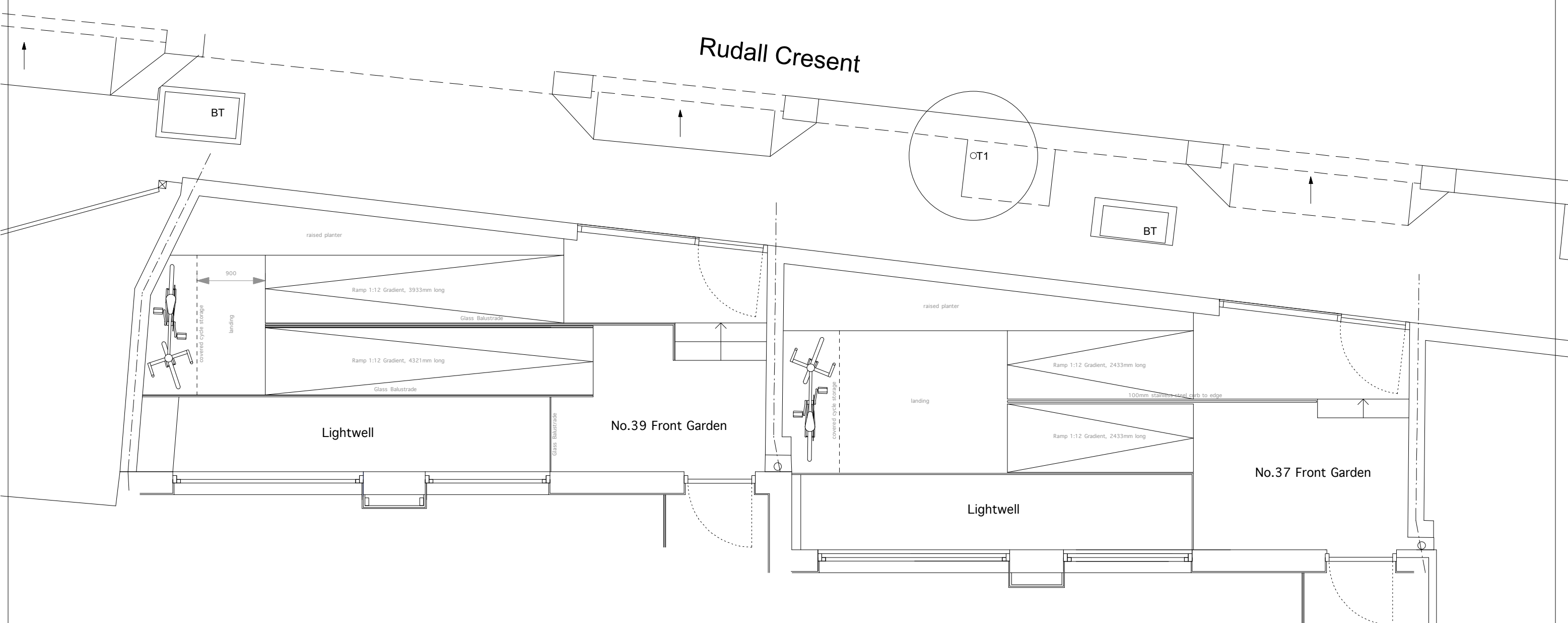
REV-  
A- 23.01.12- Title revised, references added, structure added  
B- 22.11.12- Revised chimney and roof ridge position  
C- 08.02.13 Cherry tree added  
D- 08.05.13 Revised ramps



Drawing to be read in conjunction with consultants information.  
 Do not scale from drawing.  
 All dimensions to be checked on site.  
 Drawing only to be used for purposes indicated.  
 Notify architect of any discrepancies.  
 WEBB ARCHITECTS LIMITED

REV  
 A-

# Rudall Crescent



t 020 89680279  
m 077 98854810  
richard@webb-architects.co.uk



Drawing to be read in conjunction with consultants information.  
Do not scale from drawing.  
All dimensions to be checked on site.  
Drawing only to be used for purposes indicated.  
Notifiy Architect of any discrepancies.  
● WEBB ARCHITECTS LIMITED

REV A-

37 & 39 RUDALL CRESCENT  
PROPOSED FRONT GARDEN RAMP PLAN

1:50 / A3 FOR INFORMATION  
1083.04.13(-)