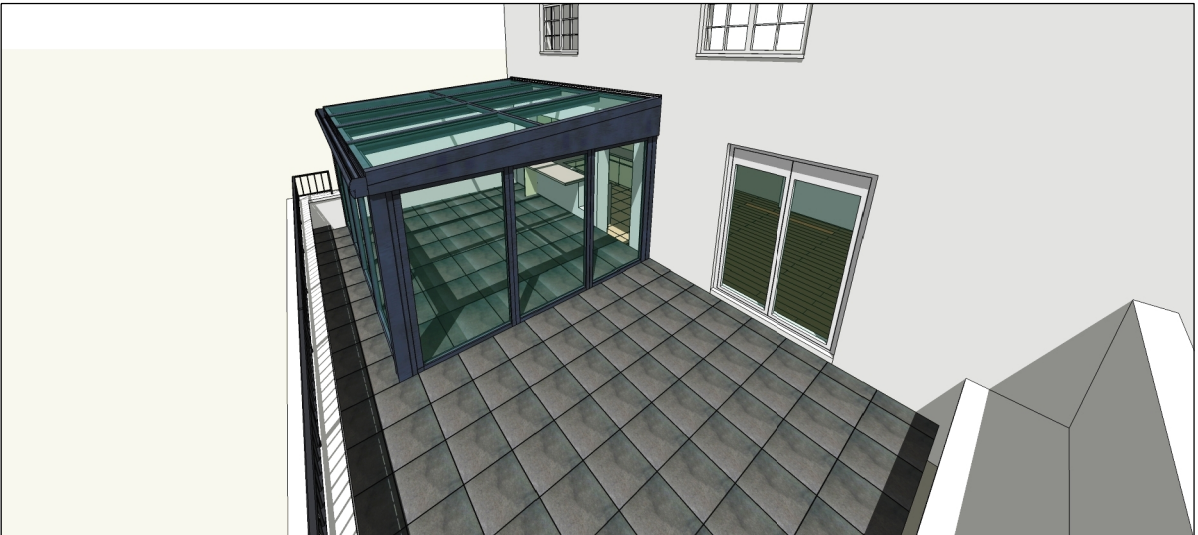




Aerial view of the proposed conservatory



Visual of the proposed conservatory side elevation as seen from the terrace

KEY MATERIALS:

Conservatory:  
Proprietary system composed of thermally broken aluminium components and clear double glazed panels. U value to be 1.2 W/m2k or better. Aluminium to have a PPC matt dark grey finish both internally and externally.

Components within conservatory:

1

Roof: double glazed fixed panels with 'self cleaning glass' and a 5 degrees pitch. Flashings and gutter to be in matt dark grey aluminium.

2

Full height fixed thermally broken double glazed panels.

3

Full height bi-fold thermally broken double glazed door system.

4

Tilt and turn window.

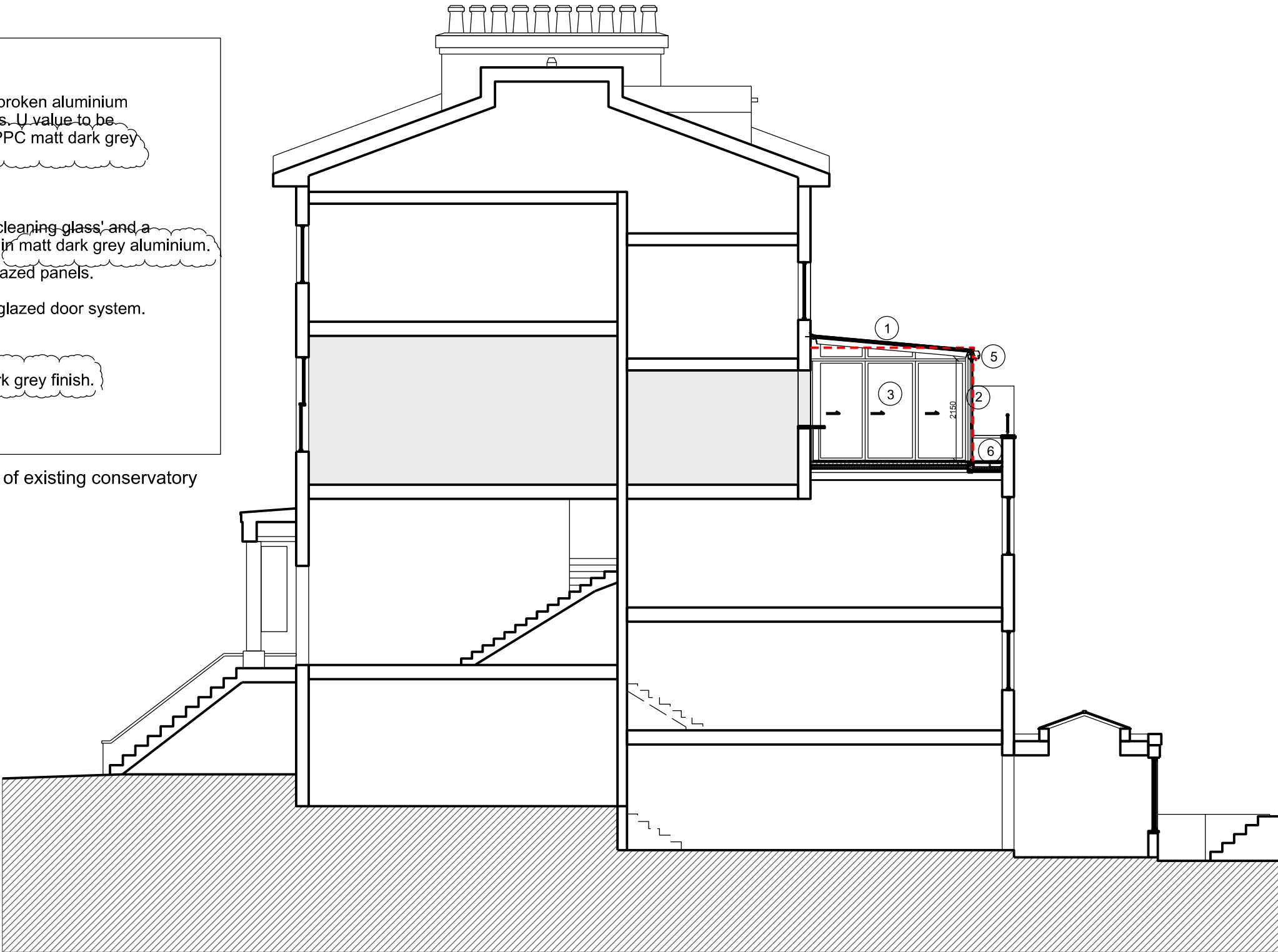
5

Concealed gutter and downpipe in matt dark grey finish.

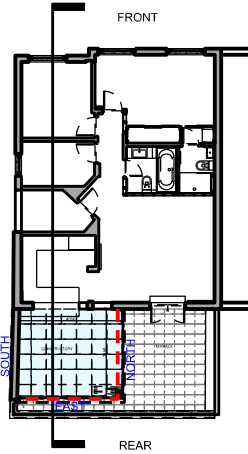
6

Terrace: New basalt slabs on pedestals. Type: 'twilight honed'.

----- Extent of existing conservatory



PROPOSED SECTION



22D Priory Road NW6		
Drawing no.	050-06	
DATE	August 2012	
Scale	1:100@A3 1:50@A1	
Title	Proposed Section	
General Notes:		
Revisions:		
A	Pre planning advice Incorporated in design	March 2013
B	Colour of conservatory changed	May 2013