

KEY MATERIALS:

Conservatory:
Proprietary system composed of thermally broken aluminium components and clear double glazed panels. U value to be 1.2 W/m2k or better. Aluminium to have a PPC matt dark grey finish both internally and externally.

Components within conservatory:

- 1 Roof: double glazed fixed panels with 'self cleaning glass' and a 5 degrees pitch. Flashings and gutter to be in matt dark grey aluminium.

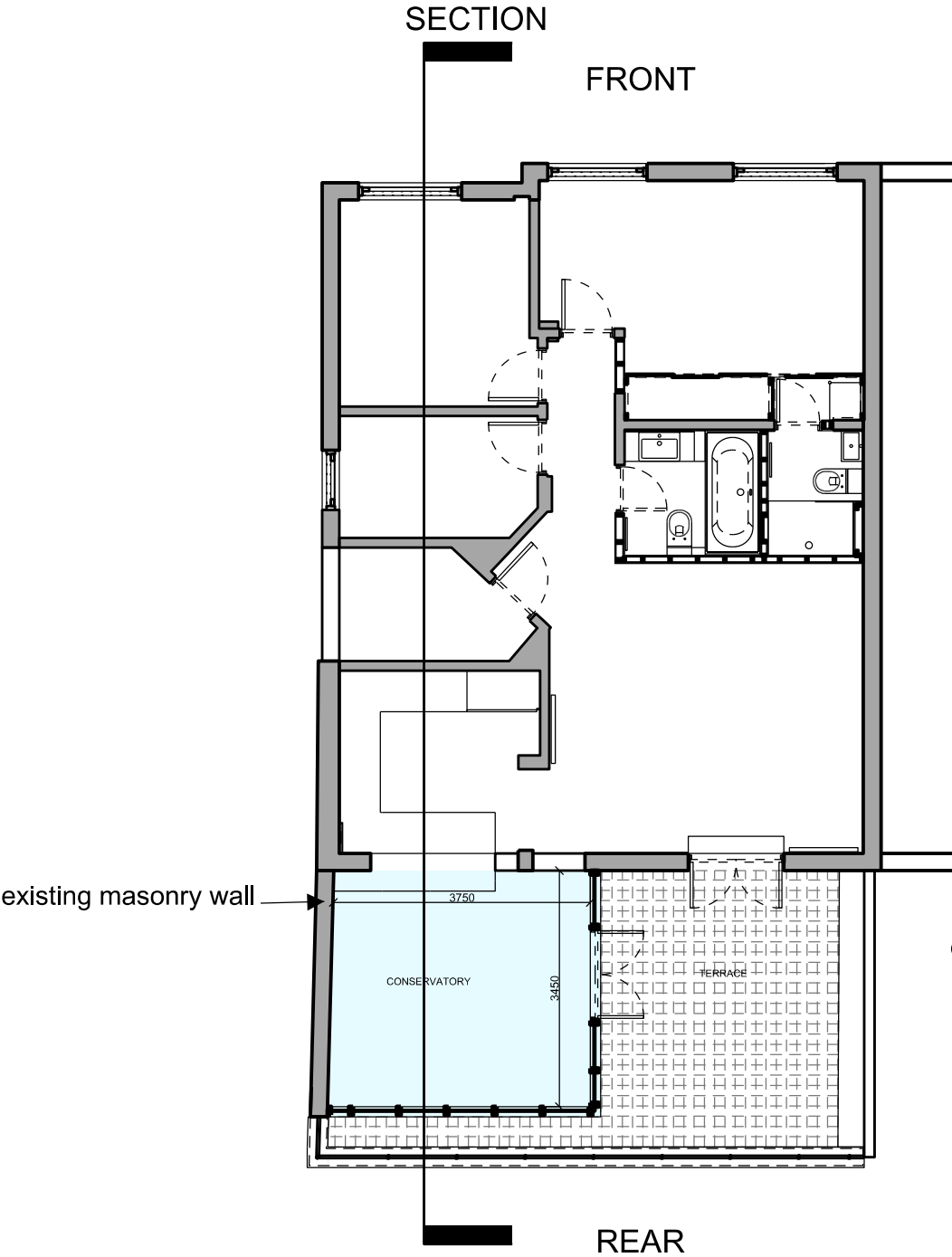
- 2 Full height fixed thermally broken double glazed panels.
3 Full height bi-fold thermally broken double glazed door system.
4 Tilt and turn window.
5 Concealed gutter and downpipe in matt dark grey finish.
6 Terrace: New basalt slabs on pedestals. Type: 'twilight honed'.



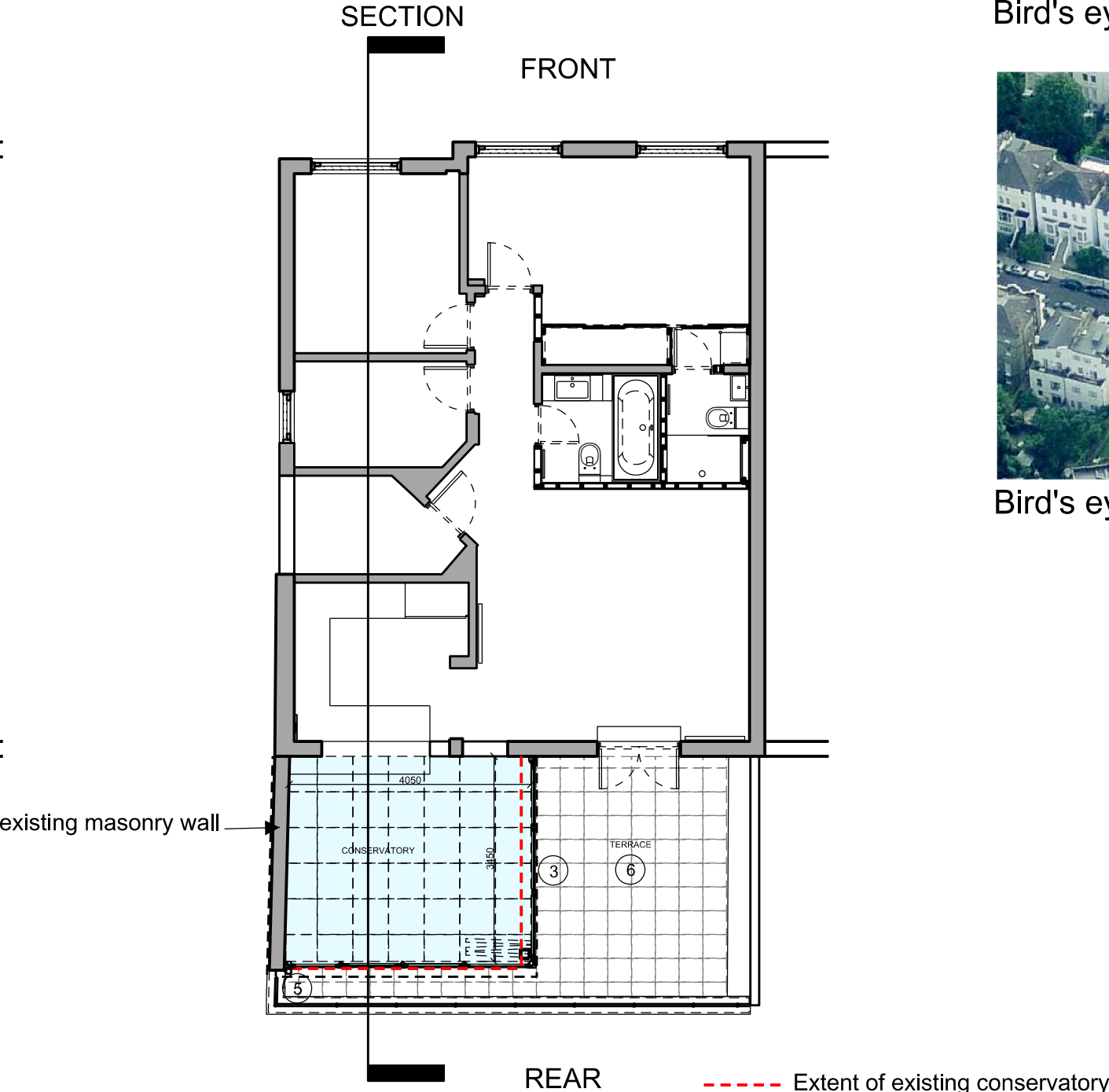
Bird's eye view of the rear NTS



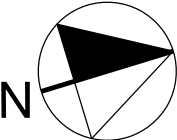
Bird's eye view of the front NTS




EXISTING PLAN



PROPOSED PLAN



22D Priory Road NW6					
Drawing no.	050-01				
DATE	August 2012				
Scale	1:100@A3 1:50@A1				
Title	Existing and Proposed plans				
<div>General Notes:</div> <div> Denotes existing wall</div>					
<div>Revisions:</div> <table><tr><td>A B</td><td>Pre-planning advice Incorporated In design Colour of conservatory changed</td><td>March 2013 May 2013</td></tr></table>			A B	Pre-planning advice Incorporated In design Colour of conservatory changed	March 2013 May 2013
A B	Pre-planning advice Incorporated In design Colour of conservatory changed	March 2013 May 2013			