

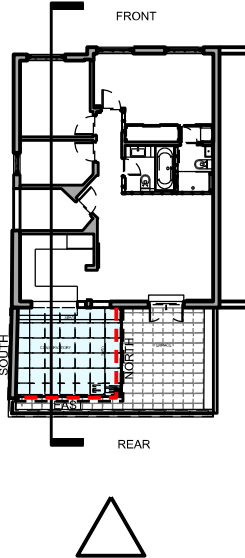


View of the existing conservatory from the rear garden of flat 22A

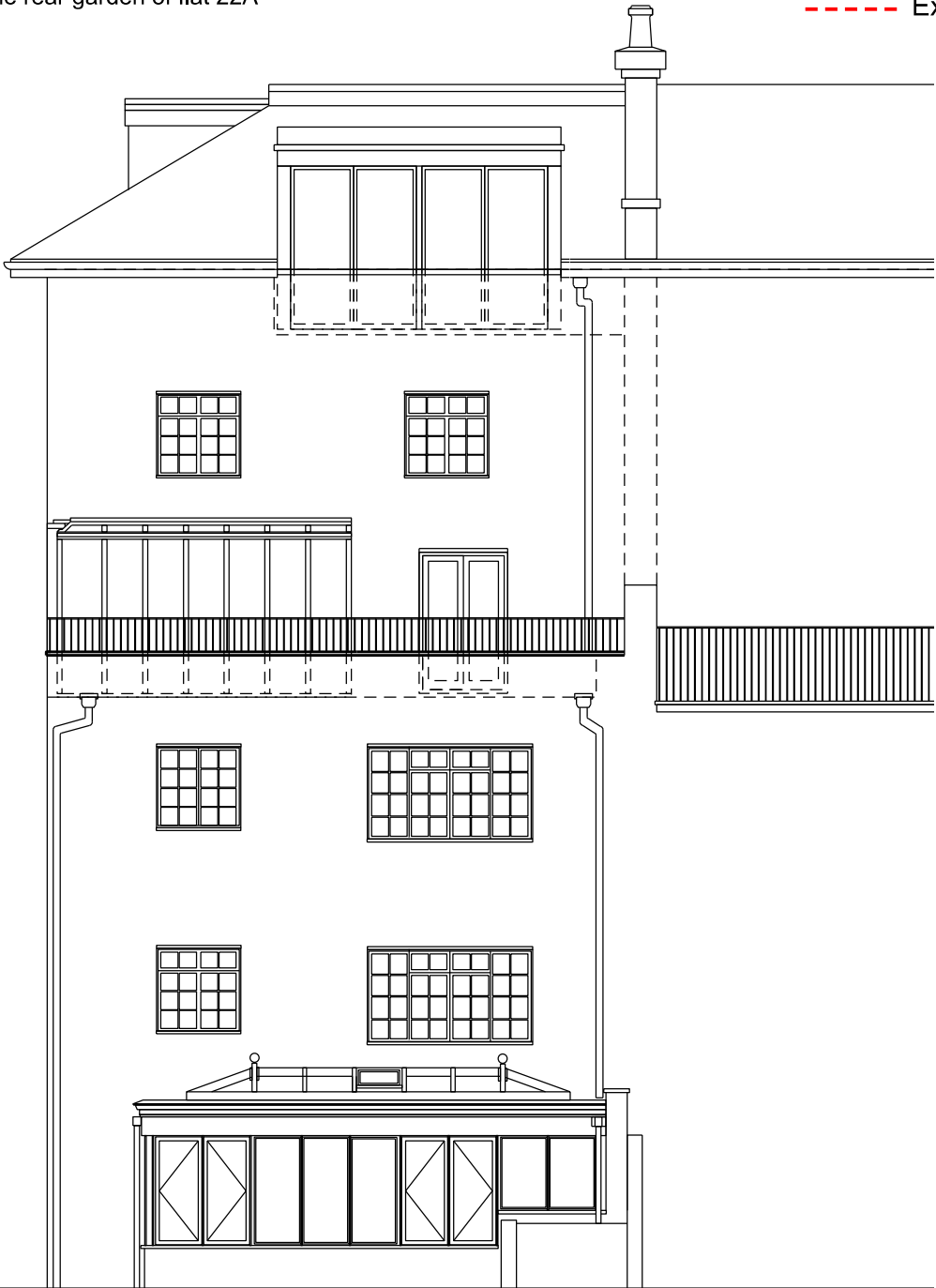
- KEY MATERIALS:
- Conservatory:
Proprietary system composed of thermally broken aluminium components and clear double glazed panels. U value to be 1.2 W/m2k or better. Aluminium to have a PPC matt dark grey finish both internally and externally.
- Components within conservatory:
- 1 Roof: double glazed fixed panels with 'self cleaning glass' and a 5 degrees pitch. Flashings and gutter to be in matt dark grey aluminium.
 - 2 Full height fixed thermally broken double glazed panels.
 - 3 Full height bi-fold thermally broken double glazed door system.
 - 4 ~~Tilt and turn window.~~
 - 5 Concealed gutter and downpipe in matt dark grey finish.
 - 6 Terrace: New basalt slabs on pedestals. Type: 'twilight honed'.



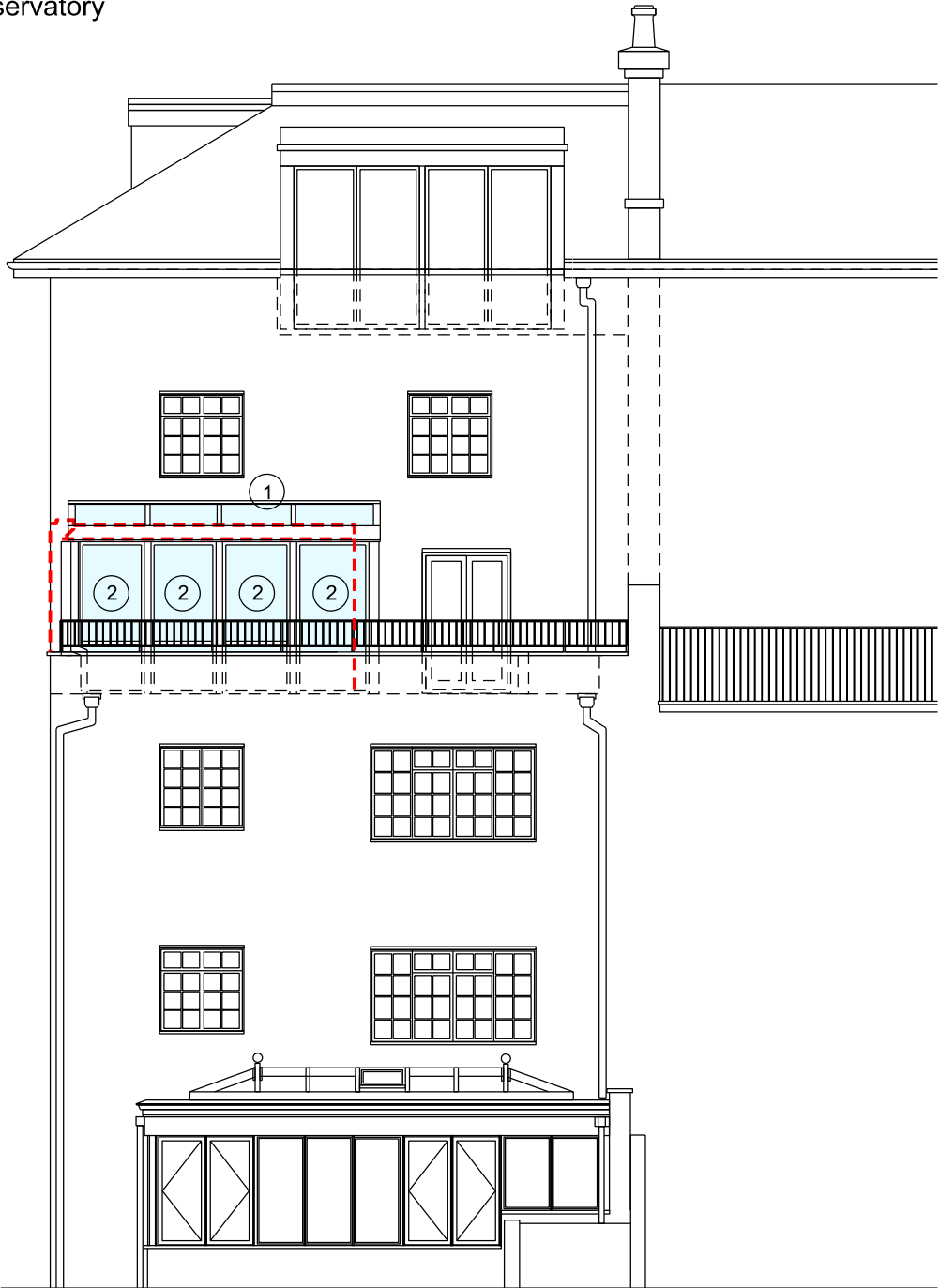
Visual of the proposed conservatory as seen from low level



----- Extent of existing conservatory



EXISTING EAST (REAR) ELEVATION



PROPOSED EAST (REAR) ELEVATION



The existing conservatory as seen from the terrace

22D Priory Road NW6		
Drawing no.	050-02	
DATE	August 2012	
Scale	1:100@A3 1:50@A1	
Title	Existing and Proposed East Elevations	
General Notes:		
Revisions:		
A	Pre-planning advice Incorporated In design	March 2013
B	Tilt and turn window replaced with fixed panel	14 May 2013
C	Colour of conservatory changed	May 2013