

# 48 LOVERIDGE ROAD



## Application for Planning Permission. 22.06.2010

An application on behalf of Fairfield Properties  
(London) Ltd.

48 Loveridge Road, NW6 2DT

**studiodare**ARCHITECTS  
design | architecture | resolution | environment

23 Doughty Mews Bloomsbury London WC1N 2PF  
t: 020 7731 5900 f: 020 7242 2671 [www.studiodare.com](http://www.studiodare.com)

## 48 Loveridge Road, Camden, NW6, 2DT



View down Loveridge Road

### Contents:

	P2
1) Introduction	P3
2) Location Plan, Site Context and Site Constraints	P4
3) Existing floor plans, scale 1:100	P5
4) Existing front and rear elevation	P6
5) The proposal	P7
6) Design and Access	P8
7) Proposal Scale 1:100	P9
8) Proposed front and rear elevations scale 1:100	P10
<b>About Studiodare</b>	P11

# Introduction

## Purpose of the statement

This Design and Access statement has been prepared on behalf of Fairfield Properties (London) Ltd. It accompanies an application for Planning permission to undertake works to the new interior layout, front and rear exteriors of 48 Loveridge Road, Kilburn, London. The works include the proposal to utilise the attic space and to maximise the useable floor area by the use of a dormer at the rear of the house and the introduction of two velux windows at the front of the house, similar to the adjacent property. This configuration of the dormer has the benefit of being invisible from the public side (Loveridge Road.)



View of back garden



Front of house

## Project team

The following provides details of the project team:

Client: Fairfield Properties (London) Ltd.

Architect: Studiodare

**studiodare**ARCHITECTS  
design | architecture | resolution | environment

23 Doughty Mews Bloomsbury London WC1N 2PF  
t: 020 7731 5900 f: 020 7242 2671 [www.studiodare.com](http://www.studiodare.com)



## Location plan, site context and site constraints



Scale 1:1250



### BACKGROUND

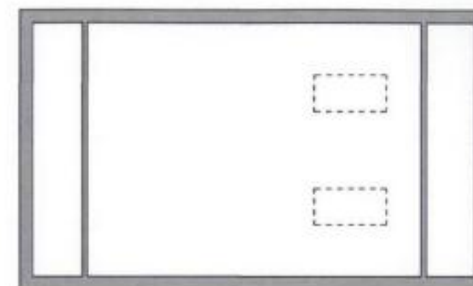
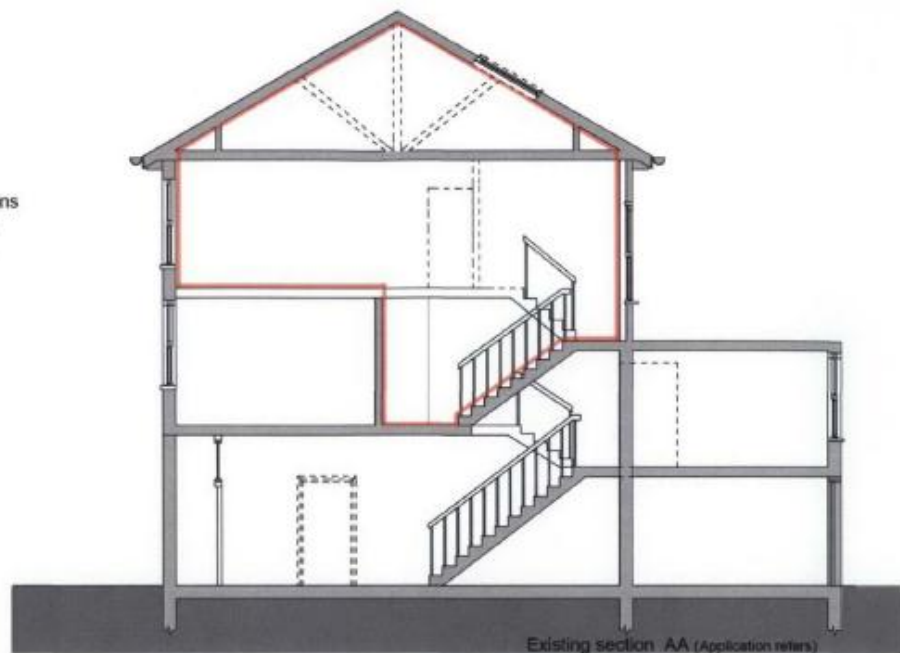
Number 48 Loveridge Road NW6, Flat 3 situated on the second floor is a part of Victorian terrace house. The current configuration of the flat is a 1 bedroom, 1 bathroom, Living area including kitchen area. An attic space with two velux windows. The building has a orientation of slightly north west, allowing for good sunlight at midday to the front but the rear benefits only late afternoon.

studiodareARCHITECTS

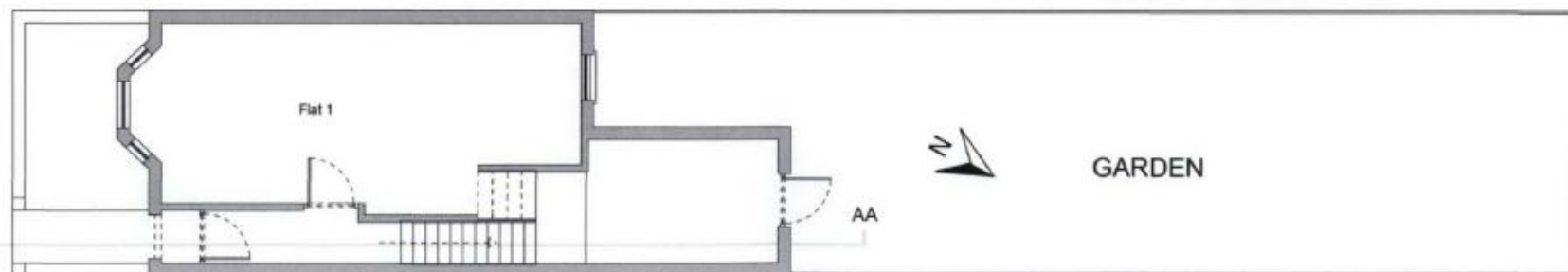
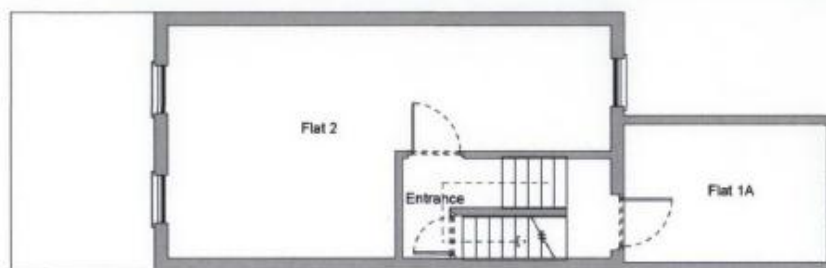
design | architecture | resolution | environment

23 Doughty Mews Bloomsbury London WC1N 2PF  
t: 020 7731 5900 f: 020 7242 2671 www.studiodare.com

NOTE:  
Ground, first floor plans  
Plans; Flats 1, 1A, 2  
For information only



PM Late afternoon sun



Loveridge Road

EXISTING FLOOR PLANS  
SCALE 1:100

studiodareARCHITECTS  
design | architecture | resolution | environment

23 Doughty Mews Bloomsbury London WC1N 2PF  
t: 020 7731 5900 f: 020 7242 2671 www.studiodare.com