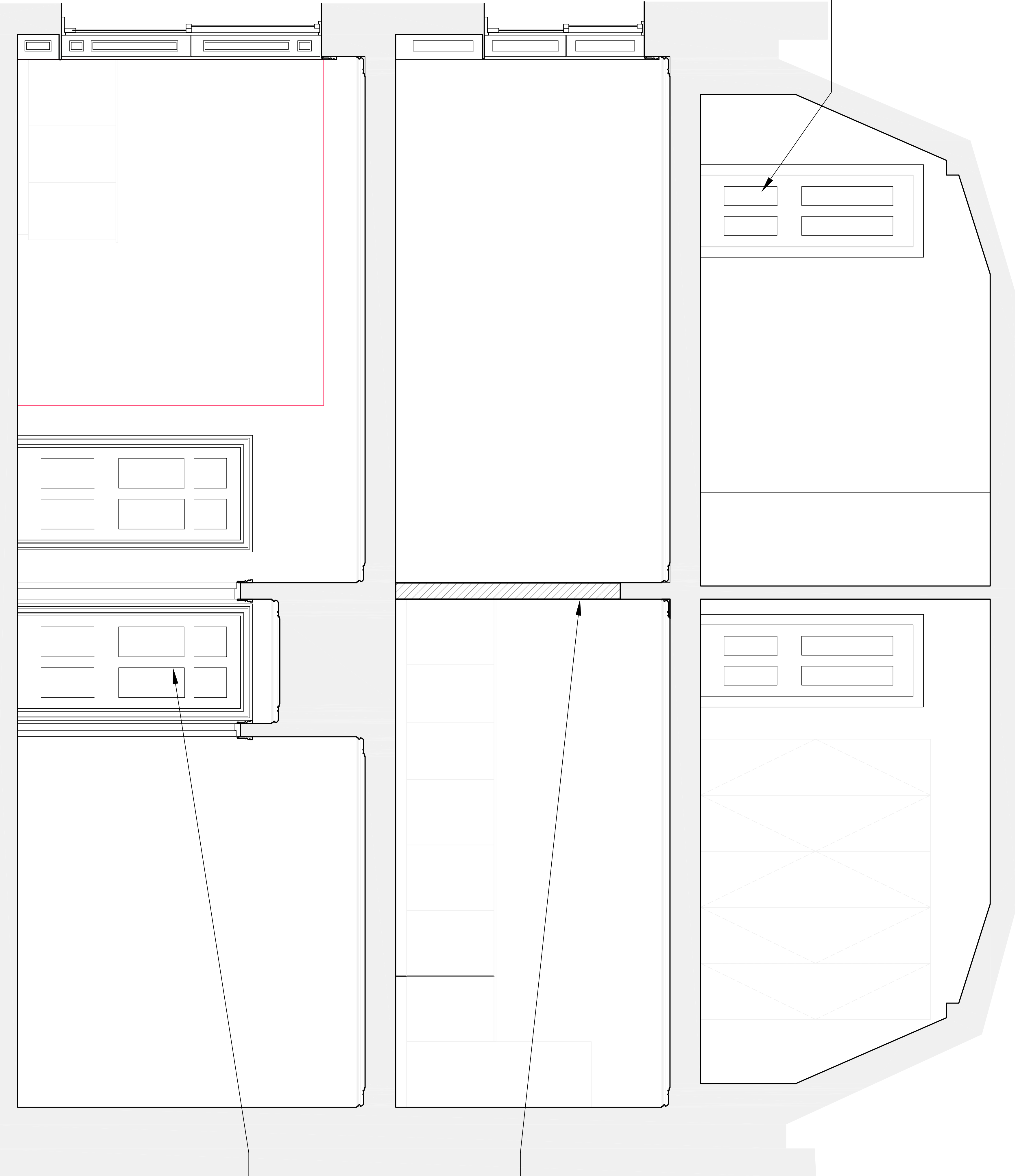


THE BEDFORD ESTATES

New 4 panelled door to match existing retained



Studwork infill where existing door removed

New 6 panelled doors to match existing retained within building

CLIENT	
The Bedford Estate	
PROJECT	
27 Gower Street, London	
DRAWING TITLE	
Section - As Proposed	
architects / planners / designers	
GARNETT +PARTNERS	
architects / planners / designers	
www.garnettpartners.com	
mail@garnettpartners.com	
Fax: +44 (0)20 7404 6648	
Tel: +44 (0)20 7404 7677	
195 High Holborn	
London WC1V 7BD	
Holborn Hall	
Garnett+Partners LLP	
GENERAL NOTES	
Do not scale. All written dimensions must be checked on site before work commences on site or in shop. Signed dimensions shall prevail over un-scaled dimensions. Where indicated, notes shall refer to the Architect Indication.	
Any areas indicated on this drawing are for guidance purposes only. No responsibility is taken for their accuracy.	
All work must be carried out in accordance with the Building Regulations and to the satisfaction of the Local Authority.	
REV / ISSUE DATE / REVISION NOTES	
B 06.06.2013 Issued for Planning	
A 10.06.2013 Issued for Planning	
REV / ISSUE DATE / REVISION NOTES	
STATUS	
PLANNING	