

THIS DRAWING AND CAD DATA THEREIN IS PROTECTED BY
COPYRIGHT
AND MUST NOT BE COPIED OR REPRODUCED
WITHOUT THE WRITTEN CONSENT OF
DLG ARCHITECTS

NO DIMENSIONS ARE TO BE SCALED FROM THIS DRAWING.
USE FIGURED DIMENSIONS ONLY.
ALL DIMENSIONS AND SIZES ARE TO BE CHECKED ON SITE
AND ANY DISCREPANCIES REPORTED TO THE ARCHITECT
PRIOR TO INITIATION OF ANY WORKS.

0 1 2 3m

LEGEND

Door Nos. are circular
Window Nos. are hexagonal
Room Nos. are rectangular

Fireplace Nos. are triangular
The room, door and window numbering system is as follows:

Room No.	Door No.	Window No.	Fireplace No.	Item No.
24	D	8	E	01
25	W	G	E	02
24	R	1	P	03
24	F			01

Floor Codes
B - Basement
G - Ground
1 - First
2 - Second
3 - Third
4 - Roof

N.B. For information on the following items please refer to these drawings:
(00) Existing
(19) Demolition
(99) Proposed

KEY - DEMOLITION

Doors/fireplaces to be removed
To be demolished/ removed

Refer to proposed elevation & section drawings for works to windows

Revised Planning Issue HR 11.06.13
Updated to planning advice YW 20/07/11
General update YW 07/04/11

The Bedford Estates
24-25 Bloomsbury Square

Demolition
Second Floor Plan

Status

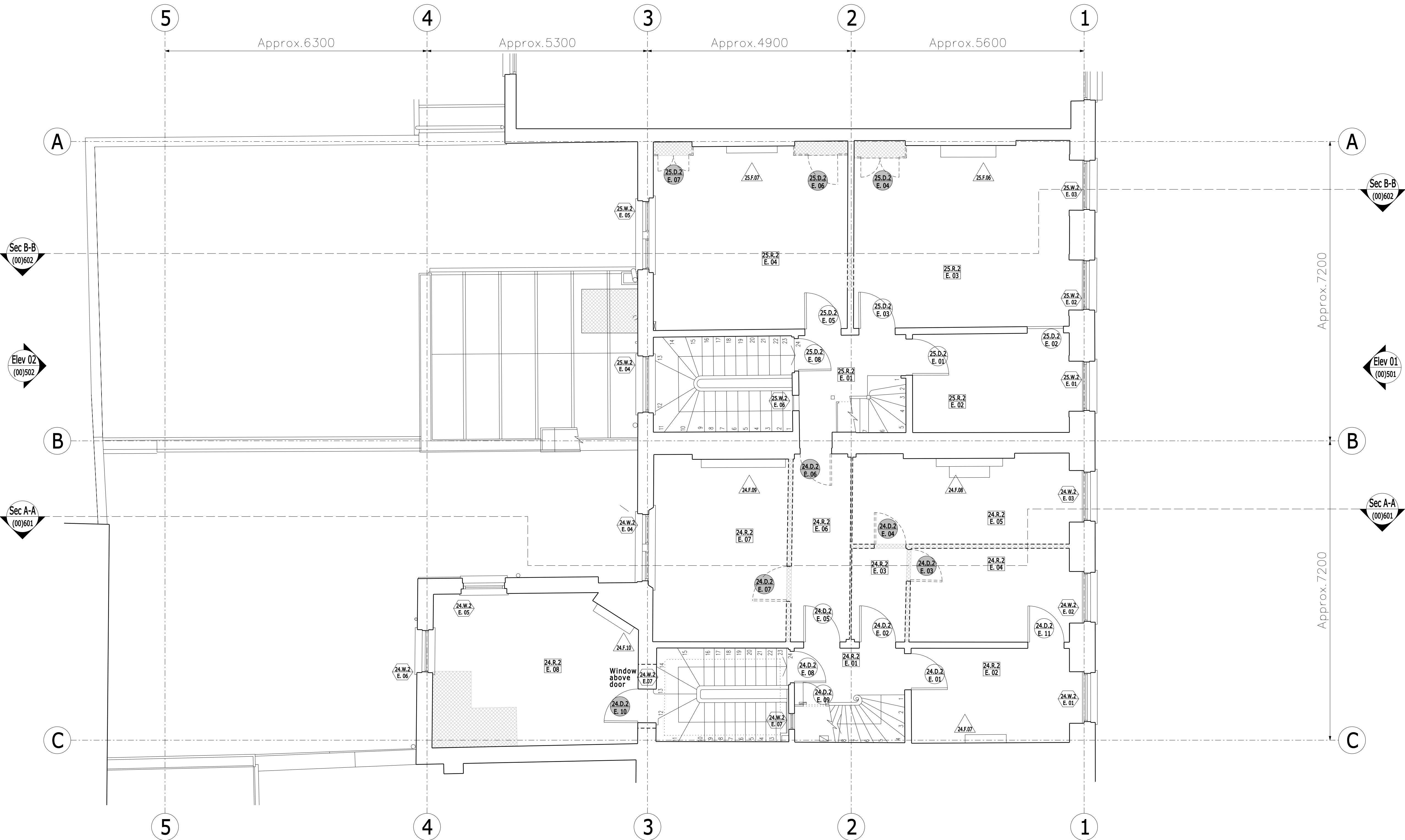
Date 20.01.11 Sheet By DW Scale @ Size 1:50@A1

Job Number 3686 Code (19) Drawing Number 201 Rev C

DLG Architects LLP
128 Southwark Street
London SE1 0SW

t +44(0)20 7620 1236
f +44(0)20 7928 4416
london@dlgarchitects.com

dlgarchitects.com



Sec B-B
(00)602

Elev 02
(00)502

Sec A-A
(00)601

Sec B-B
(00)602

Elev 01
(00)501

Sec A-A
(00)601

C

C

A

A

B

B

C

C

Sec B-B
(00)602

Elev 02
(00)502

Sec A-A
(00)601

Sec B-B
(00)602

Elev 01
(00)501

Sec A-A
(00)601

C

C

A

A

B

B

C

C

Sec B-B
(00)602

Elev 02
(00)502

Sec A-A
(00)601

Sec B-B
(00)602

Elev 01
(00)501

Sec A-A
(00)601

C

C

A

A

B

B

C

C

Sec B-B
(00)602

Elev 02
(00)502

Sec A-A
(00)601

Sec B-B
(00)602

Elev 01
(00)501

Sec A-A
(00)601

C

C

A

A

B

B

C

C

Sec B-B
(00)602

Elev 02
(00)502

Sec A-A
(00)601

Sec B-B
(00)602

Elev 01
(00)501

Sec A-A
(00)601

C

C

A

A

B

B

C

C

Sec B-B
(00)602

Elev 02
(00)502

Sec A-A
(00)601

Sec B-B
(00)602

Elev 01
(00)501

Sec A-A
(00)601

C

C

A

A

B

B

C

C

Sec B-B
(00)602

Elev 02
(00)502

Sec A-A
(00)601

Sec B-B
(00)602

Elev 01
(00)501

Sec A-A
(00)601

C

C

A

A

B

B

C

C

Sec B-B
(00)602

Elev 02
(00)502

Sec A-A
(00)601

Sec B-B
(00)602

Elev 01
(00)501

Sec A-A
(00)601

C

C

A

A

B

B

C

C

Sec B-B
(00)602

Elev 02
(00)502

Sec A-A
(00)601

Sec B-B
(00)602

Elev 01
(00)501

Sec A-A
(00)601

C

C

A

A

B

B

C

C

Sec B-B
(00)602

Elev 02
(00)502

Sec A-A
(00)601

Sec B-B
(00)602

Elev 01
(00)501

Sec A-A
(00)601

C

C

A

A

B

B

C

C

Sec B-B
(00)602

Elev 02
(00)502

Sec A-A
(00)601

Sec B-B
(00)602

Elev 01
(00)501

Sec A-A
(00)601

C

C

A

A

B

B

C

C

Sec B-B
(00)602

Elev 02
(00)502

Sec A-A
(00)601

Sec B-B
(00)602

Elev 01
(00)501

Sec A-A
(00)601

C

C

A

A

B

B

C

C

Sec B-B
(00)602

Elev 02
(00)502

Sec A-A
(00)601

Sec B-B
(00)602

Elev 01
(00)501

Sec A-A
(00)601

C

C

A

A

B

B

C

C

Sec B-B
(00)602

Elev 02
(00)502

Sec A-A
(00)601

Sec B-B
(00)602

Elev 01
(00)501

Sec A-A
(00)601

C

C

A

A

B

B

C

C

Sec B-B
(00)602

Elev 02
(00)502

Sec A-A
(00)601

Sec B-B
(00)602

Elev 01
(00)501

Sec A-A
(00)601

C

C

A

A

B

B

C

C

Sec B-B
(00)602

Elev 02
(00)502

Sec A-A
(00)601

Sec B-B
(00)602

Elev 01
(00)501

Sec A-A
(00)601

C

C

A

A

B

B

C

C

Sec B-B
(00)602

Elev 02
(00)502

Sec A-A
(00)601

Sec B-B
(00)602

Elev 01
(00)501

Sec A-A
(00)601

C

C

A

A

B

B

C

C

Sec B-B
(00)602

Elev 02
(00)502

Sec A-A
(00)601

Sec B-B
(00)602

Elev 01
(00)501

Sec A-A
(00)601

C

C

A

A

B

B

C

C

Sec B-B
(00)602

Elev 02
(00)502

Sec A-A
(00)601

Sec B-B
(00)602

Elev 01
(00)501

Sec A-A
(00)601

C

C

A

A

B

B

C

C

Sec B-B
(00)602

Elev 02
(00)502

Sec A-A
(00)601

Sec B-B
(00)602

Elev 01
(00)501

Sec A-A
(00)601

C

C

A

A

B

B

C

C

Sec B-B
(00)602

Elev 02
(00)502

Sec A-A
(00)601

Sec B-B
(00)602

Elev 01
(00)501

Sec A-A
(00)601

C

C

A

A

B

B

C

C

Sec B-B
(00)602

Elev 02