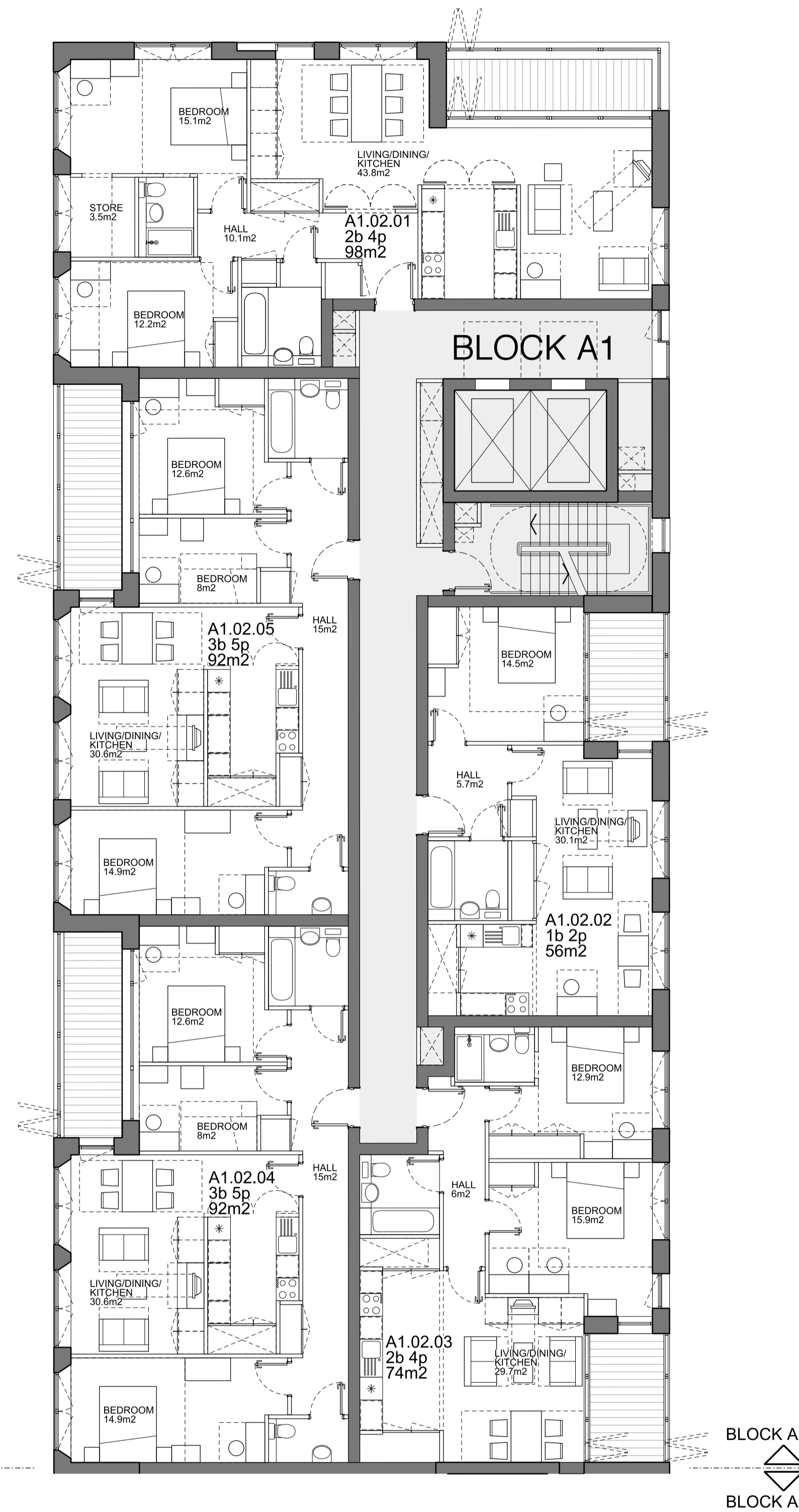
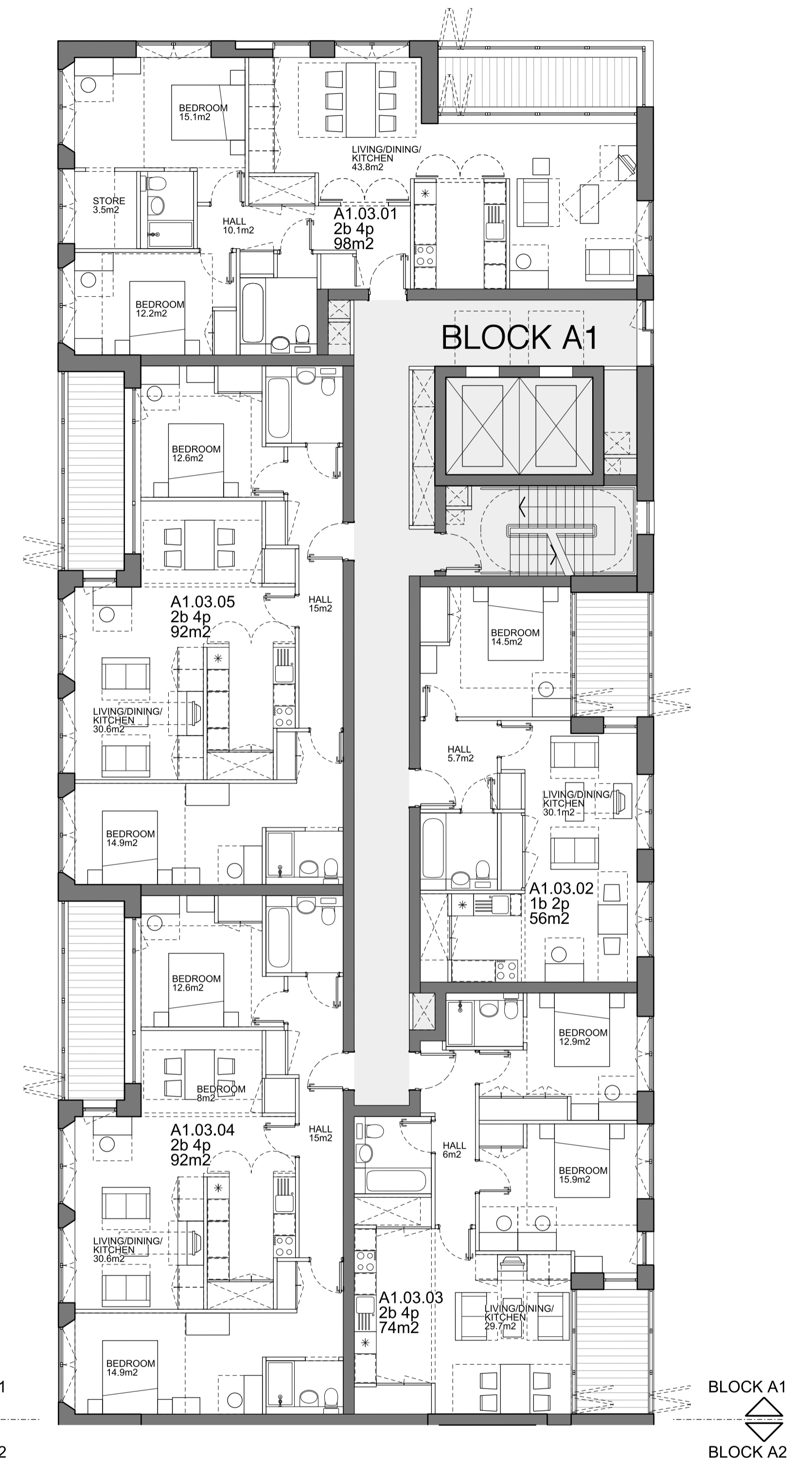


A1 UPPER GROUND LEVEL +17.225



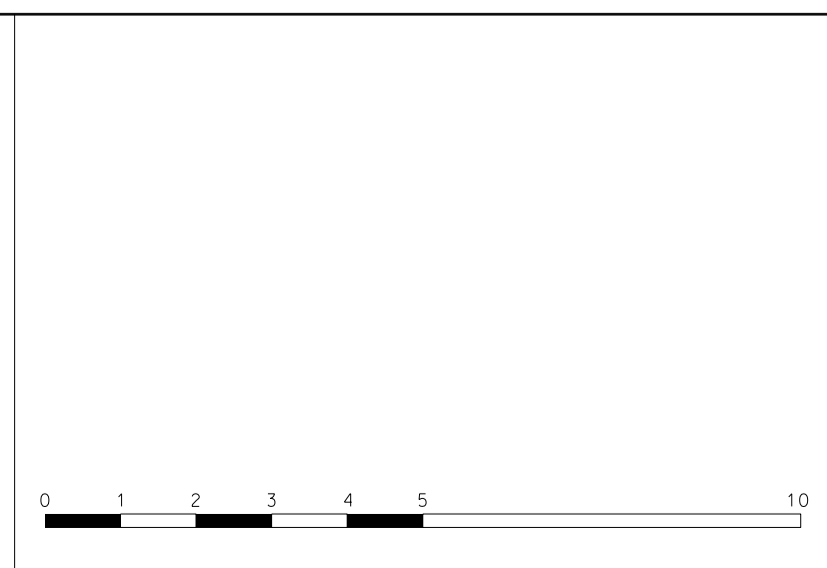
A1 LEVEL 01 +20.450



A1 TYPICAL LEVEL 02-05 +23.675-+33.35
NOTE - A1 LEVEL 06 +36.575 WINTER GARDENS BECOME BALCONIES

KEY	REV	DATE
	P01	24/04/2013 Issued for Planning

KEY	REV	DATE
	P01	24/04/2013 Issued for Planning

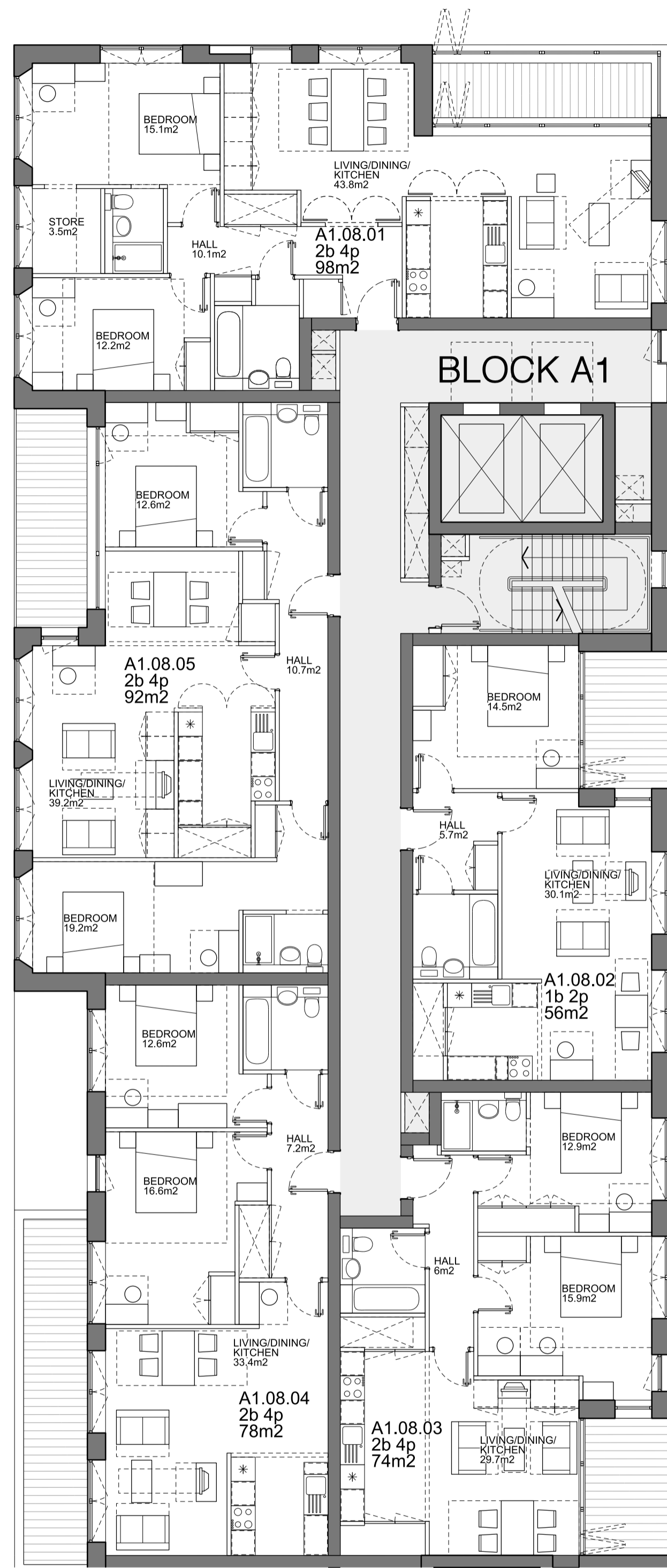


NOTE
1. All dimensions to be checked on site by the contractor and such dimensions to be his responsibility.
2. Report all drawing errors, omissions and discrepancies to the architect.

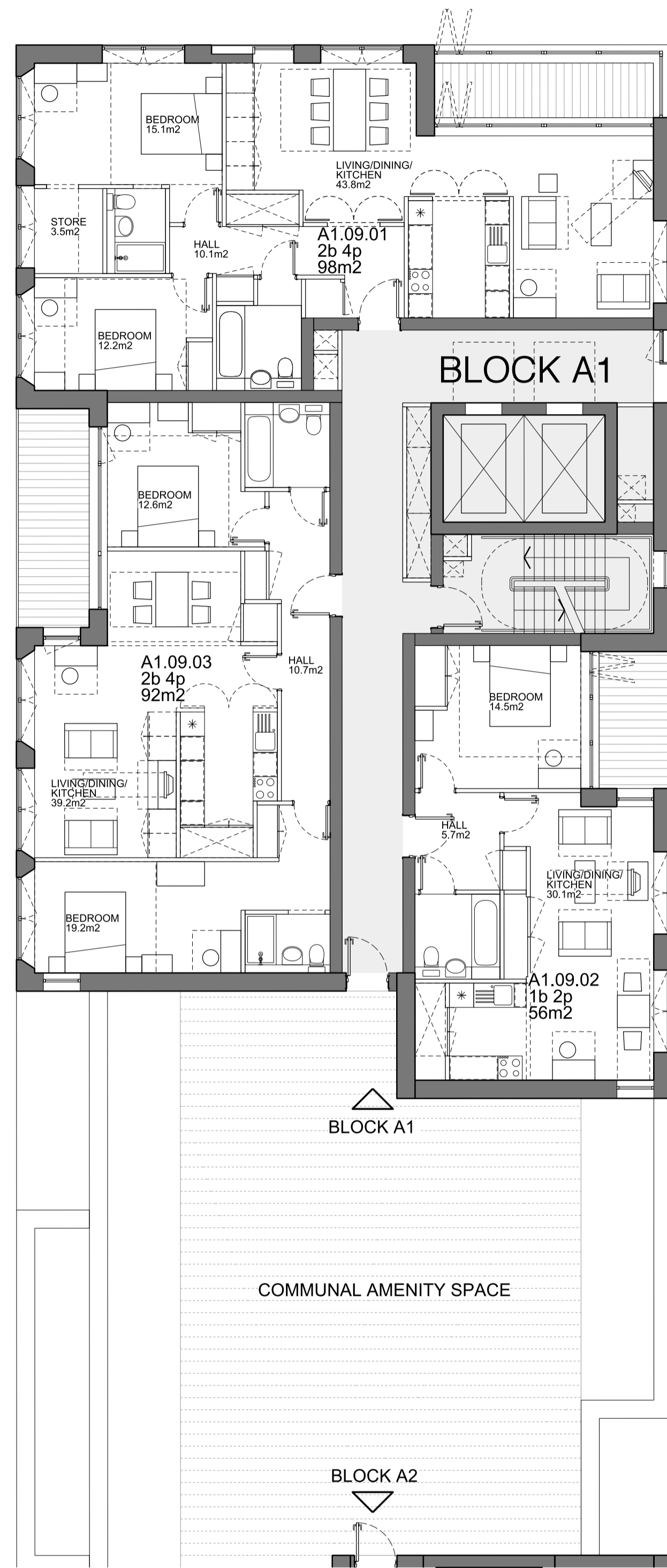
LOCATION

NOTE
1. All dimensions to be checked on site by the contractor and such dimensions to be his responsibility.
2. Report all drawing errors, omissions and discrepancies to the architect.

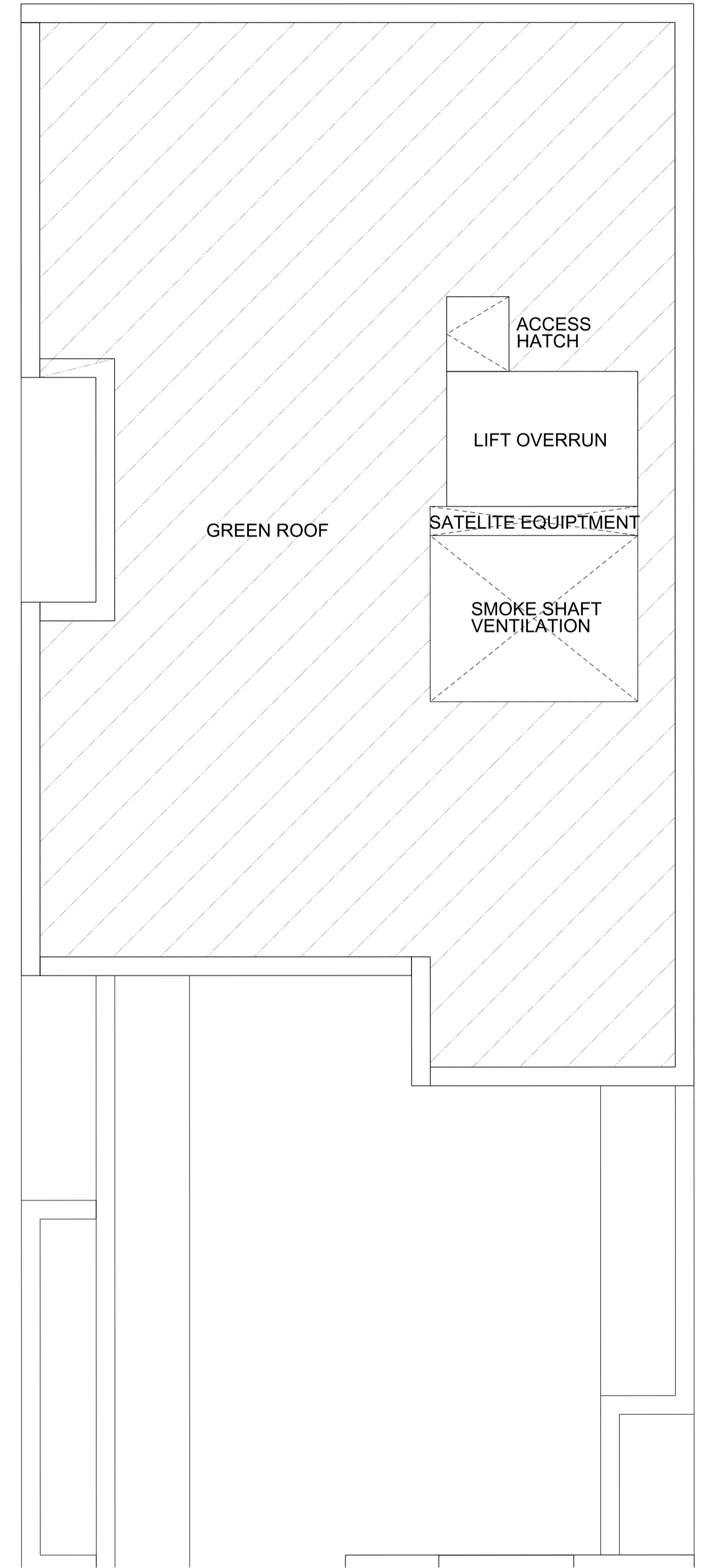
ALLFORD HALL MONAGHAN MORRIS					
ARCHITECTS LTD 2ND FLOOR, BLOCK C, 5-23 OLD STREET LONDON EC1V 9HL TEL 020 7251 5261 FAX 020 7251 5123 WEB WWW.AHM.CO.UK					
job title ROYAL MAIL MOUNT PLEASANT PHOENIX PLACE PLOT P1					
drawing title / location PROPOSED PLANS BLOCK A1 (01 OF 02)					
drawn by	checked	scale	status		
MR	CD	1:100@A1; 1:200@A3	PLANNING		
project	zone	type	classification	drawing no	revision
11159	P1	-	(00)	P150	P01



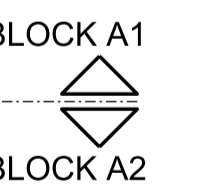
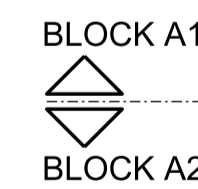
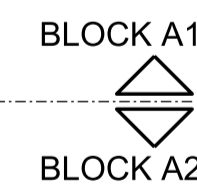
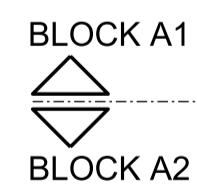
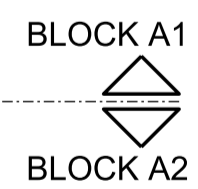
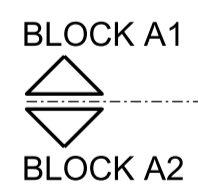
A1 LEVEL 07 +39.80



A1 LEVEL 08 +43.025

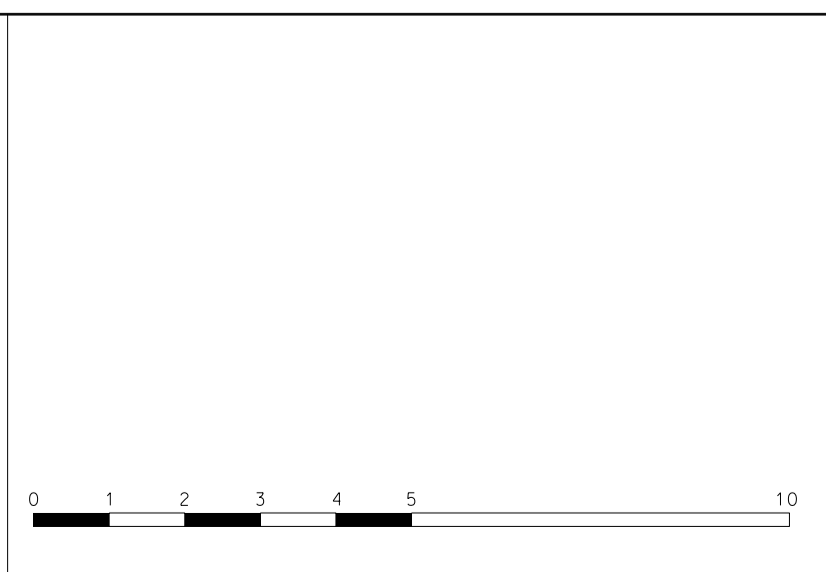


A1 ROOF LEVEL +46.25



KEY	REV	DATE	ISSUED FOR
	P01	24/04/2013	Issued for Planning

REV	DATE	ISSUED FOR
P01	24/04/2013	Issued for Planning



NOTE
1. All dimensions to be checked on site by the contractor and such dimensions to be his responsibility.
2. Report all drawing errors, omissions and discrepancies to the architect.

LOCATION

ARCHITECTS Ltd
2ND FLOOR, BLOCK C, 5-23 OLD STREET LONDON EC1V 9HL TEL 020 7251 5261 FAX 020 7251 5123 WEB WWW.AHMM.CO.UK
job title ROYAL MAIL MOUNT PLEASANT PHOENIX PLACE PLOT P1
drawing title / location PROPOSED PLANS BLOCK A1 (02 OF 02)
drawn by checked scale status MR CD 1:100@A1; 1:200@A3 PLANNING
project zone type classification drawing no revision 11159 P1 - [00] P151P01

