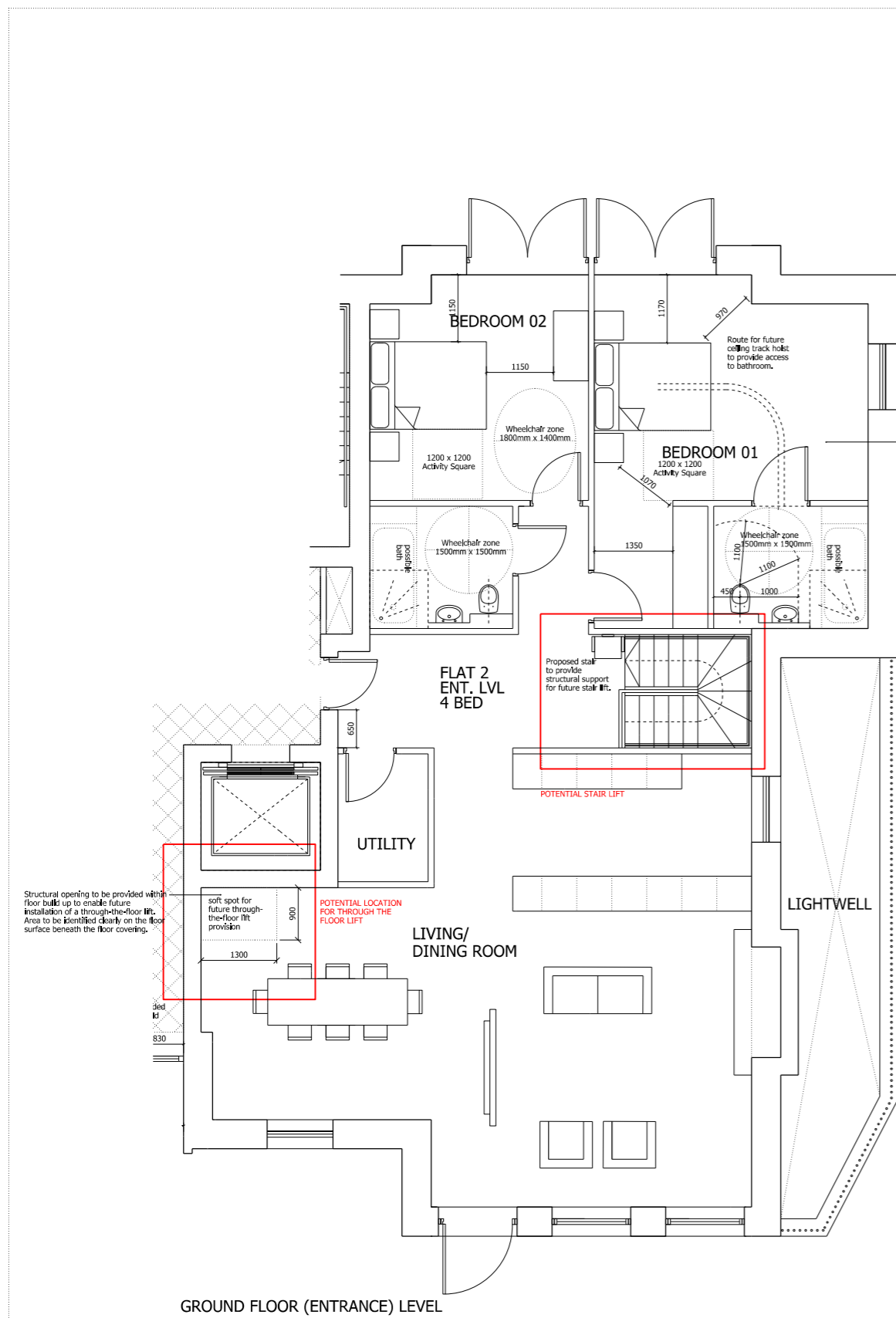


NOTES:
 DO NOT SCALE FROM THIS DRAWING.
 ALL DIMENSIONS TO BE CHECKED ON SITE.
 ALL OMISSIONS AND DISCREPANCIES TO BE REPORTED TO THE ARCHITECT IMMEDIATELY.

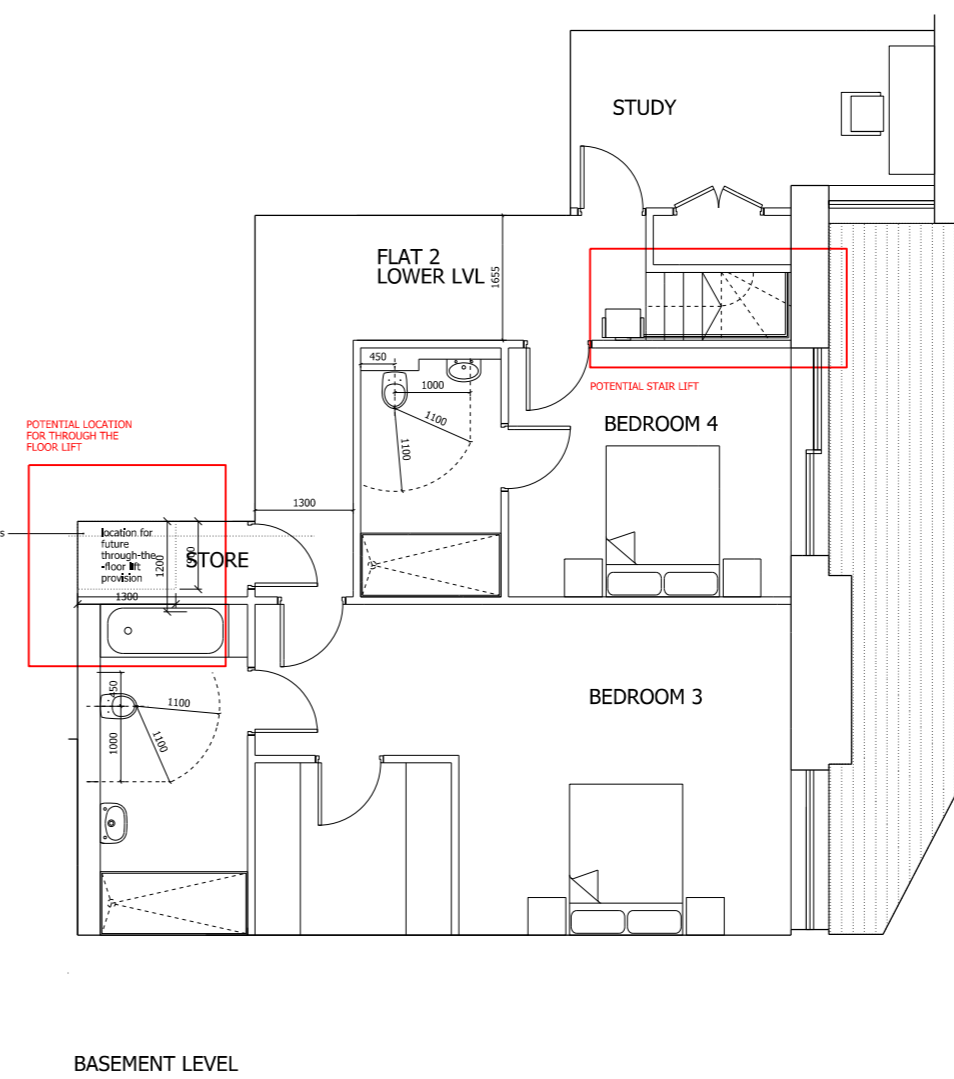
ALL RIGHTS RESERVED. THIS WORK IS COPYRIGHT AND CANNOT BE REPRODUCED OR COPIED OR MODIFIED IN ANY FORM OR BY ANY MEANS, GRAPHIC ELECTRONIC OR MECHANICAL, INCLUDING PHOTOCOPYING WITHOUT THE WRITTEN PERMISSION OF SQUIRE AND PARTNERS ARCHITECTS.



GROUND FLOOR (ENTRANCE) LEVEL

Strengthened ceiling to be provided to ensure structural support for future hoist between bedroom and bathroom.

Structural opening to be provided with floor built up to enable future installation of a through-the-floor lift. Area to be identified clearly on the floor surface beneath the floor covering.



BASEMENT LEVEL

Through-the-floor lift space identified as storage. Door and partition wall to be removed upon future installation of lift.

Revision description	Date	Check	Rev
Through floor lift and stair lift added	26/06/13	SBA	A

Squire and Partners

77 Wicklow Street London WC1X 9JY
 T: 020 7278 5555 F: 020 7239 0495

info@squireandpartners.com
 www.squireandpartners.com

Project
 14 Netherhall Gardens
 London
 NW3

Drawing
 Block 02 Ground & B1 Floors
 Proposed Plans: Flat 02
 Lifetime Homes Compliance

Drawn	Date	Scale
FP	March 2013	1:50@A1 1:100@A3
Job number	Drawing number	Revision
11011	B2_P_00_D811_002	A