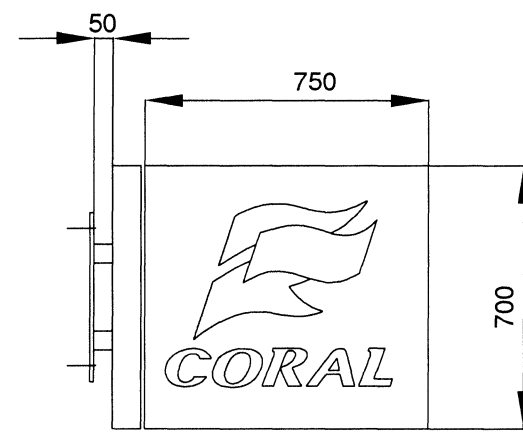
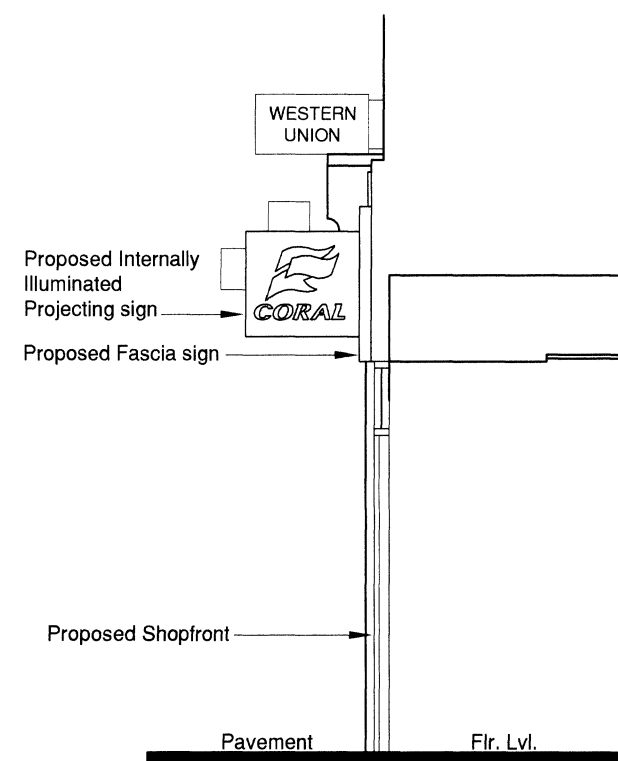


PROJECTING SIGN
 Aluminium - Sign case reinforced internally, with drain holes to base powder coated to match RAL 5002 "blue", with suitable projecting arm fixing also decorated to specified colour.
 Sign case to be fitted and folded 3mm acrylic panel ref: white 050 masked to suit Coral text and logo and finished to match.
 Flag logo to be similarly applied to panel and faced with translucent vinyls, by 3M Scotchcal 100 series, top 3630 - 26 GREEN, middle 3630 - 25 YELLOW, bottom 3630 - 43 RED.
 Sign case to be internally illuminated on both sides with high quality LED system. LEDs to give solid and even illumination without spotting. 12V Drivers to be located inside the sign box for easy access. All ends to be capped and all joins to be made with inline connectors or 3M gel-filled connects.

NB. Only lettering and logo internally illuminated.



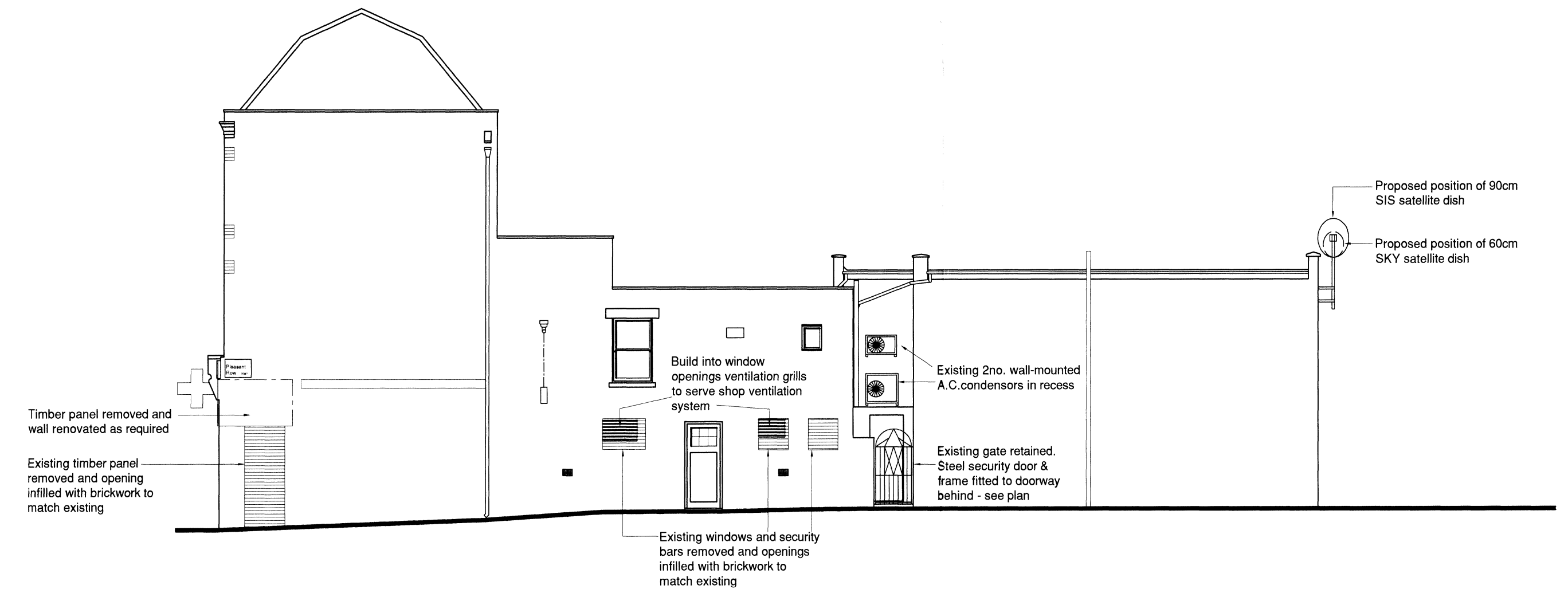
PROPOSED PROJECTING SIGN 1:20



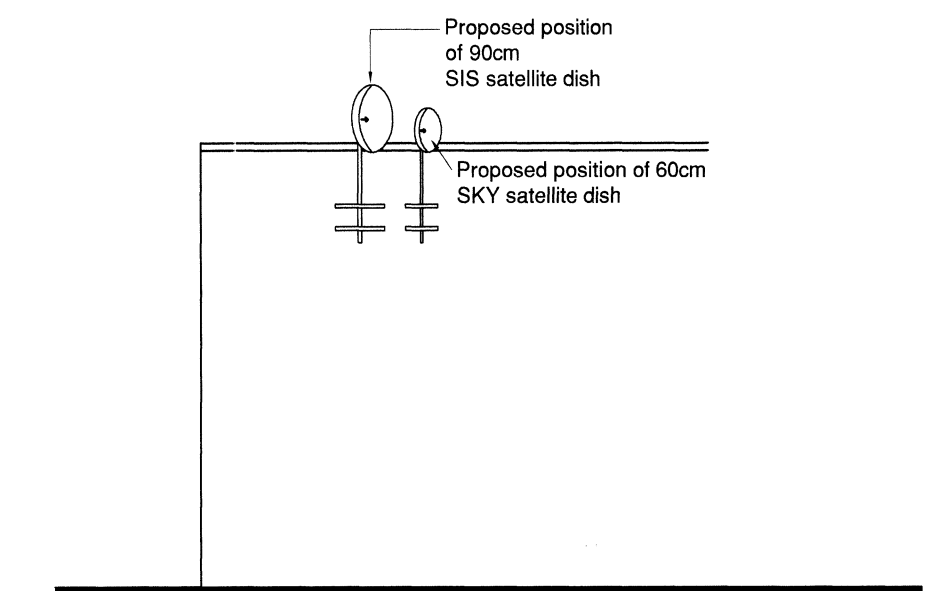
PROPOSED SECTION THROUGH ENTRANCE



PROPOSED SHOPFRONT ELEVATION (NORTH EAST)



PROPOSED (NORTH) ELEVATION



PROPOSED (SOUTH WEST) ELEVATION

FASCIA SIGN
 Sign backbox to be constructed from decaled stainless steel behind text only with mild steel galvanised brackets including 14 gauge folded aluminium top cover suitably acid etched primed and stove enamelled to match current Coral "blue" RAL 5002

Panels to be stencil cut and fitted with "Coral" text built up with faces from 3mm opal 050 acrylic to form 22mm deep return to text, fitted to face of panel. Flag logo to be built up similarly with 3mm opal 050 acrylic and to face apply translucent vinyls, by 3M Scotchcal 100 series, top 3630 - 26 green, middle 3630 - 25 yellow and bottom 3630 - 43 red.

All panels to be fabricated with suitable vertical lap joints to form "U" and hanging lips to suit.

Text panels to be back illuminated with high quality chain LED lighting system. LED modules installed behind the lettering, to trace the path of the text and flag only to minimise wasted light, giving solid and even illumination without spotting. 12V Drivers to be located inside the sign box to allow for easy access. All ends to be capped and all joins to be made with inline connectors or 3M gel-filled connects.

GENERAL NOTE
 1. Due to the construction method described above, text and flag logo only shall be illuminated, face panel shall be non-illuminated.
 2. Luminance level shall be max 800 candela per square metre of area illuminated.

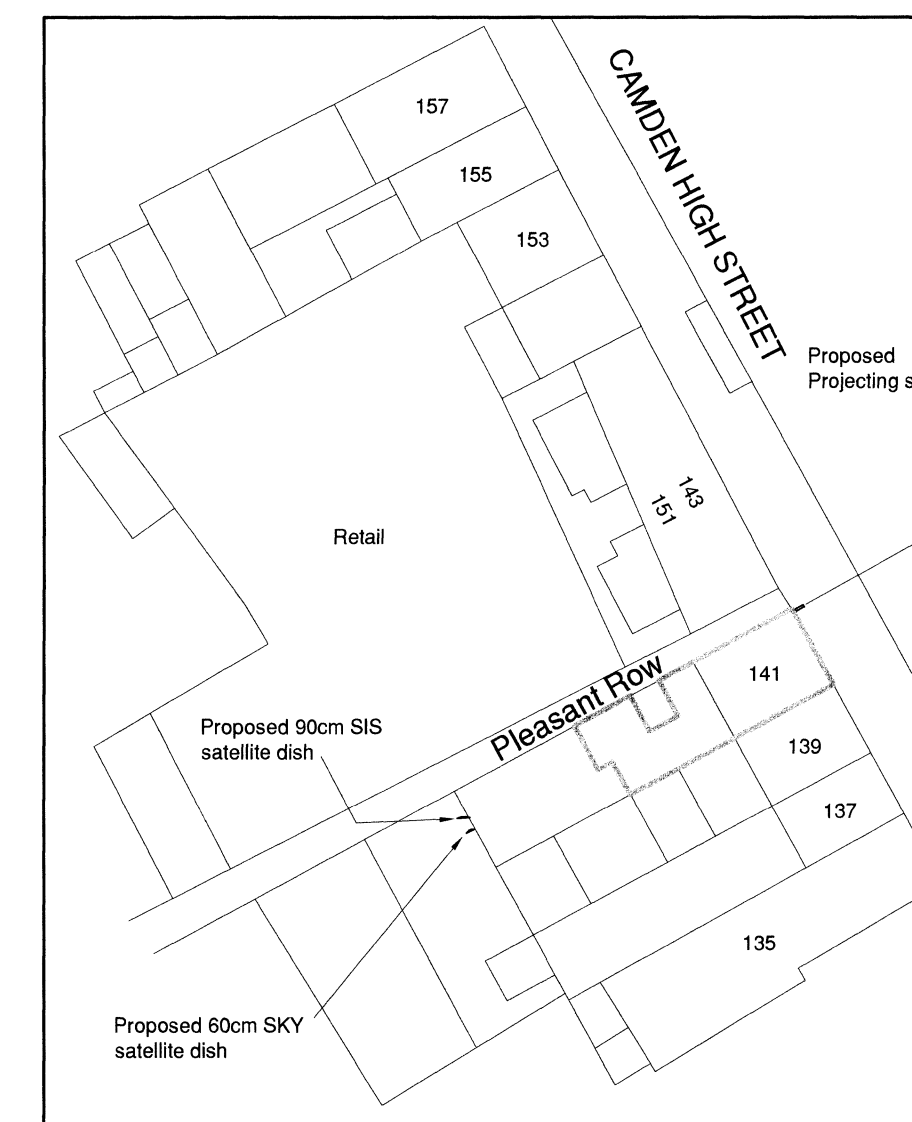
SHOP FRONT
 Milled aluminium section to be approx. 100mm x 54mm dry jointed with appropriate rebate for glass, including weathertight glazing seals. Powder coated blue RAL 5002, including all accessories internally and externally. Glass to comply with BS 6205 and G & F recommendations and shall be min. 10.8mm thick laminated plate glass. Frame to be sealed around perimeter with coloured mastic seal. Manifestation to be applied as shown, 900mm and 1500mm above pavement level.

STALLRISER
 75 x 50 Treated softwood framing complete with head and sole plates and vertical members at 400 centres with 19mm Marine quality plywood cladding with Hyload d.p.c. Face stallriser and pilaster with 200 x 200 CABALTO blue ceramic tiles and blue epoxy waterproof grout. Clear silicon sealant to all joints and black sealant at bottom edge. N.B. Height of stallriser to match existing and not Standard Specification height.

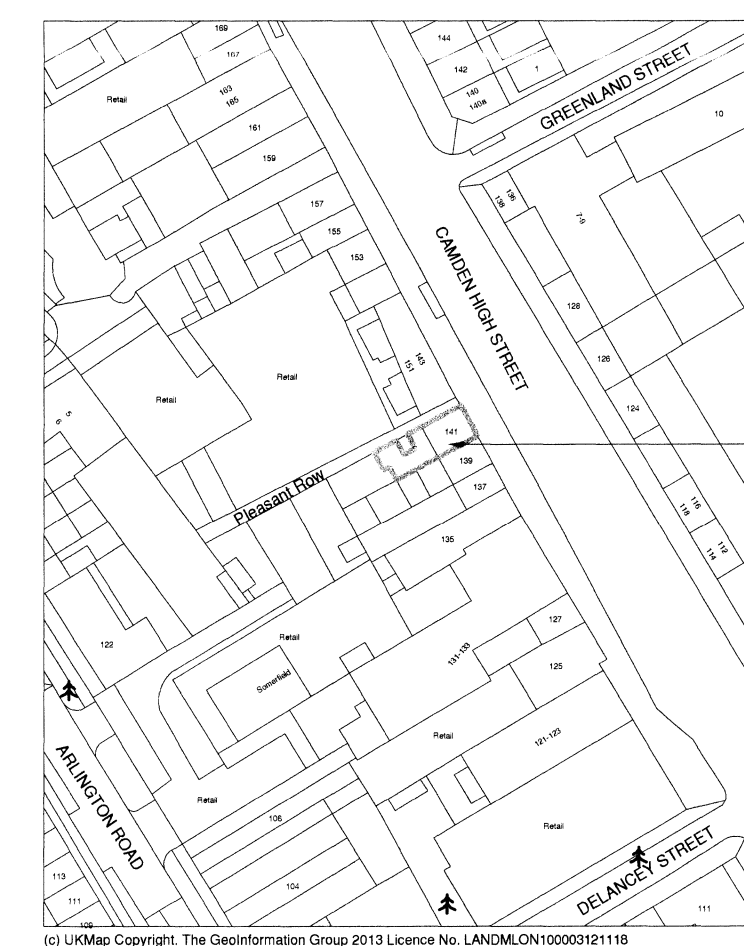
ENTRANCE DOOR
 New entrance door - powder coated aluminium entrance Door unit by KAWNEER UK Ltd - narrow style 190 or Other approved system conforming to BS 1474:1972 and BS6496: 1984. Section sizes = 54mm vertical styles, 57mm top rail and 195mm middle rail.
 NOTE: Side light centre rail or door centre rail to incorporate letter plate unit. Door to be glazed with 10.8mm thick laminated safety glass to BS 6205. Refer to specification for ironmongery etc. Colour current Coral "blue" - RAL 5002.

Minimum door widths:
 Min. unobstructed width between frames and any projecting handles = 1000mm

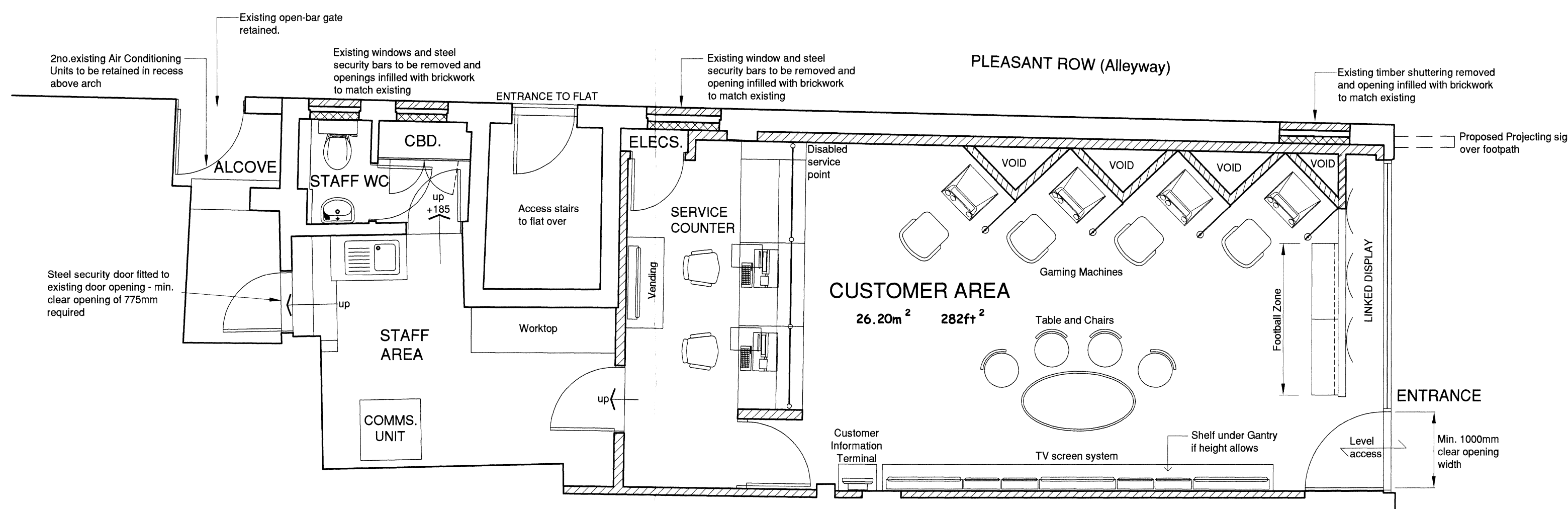
Manifestation to be applied to door 900mm and 1500mm above floor level.



BLOCK PLAN 1:500



SITE LOCATION PLAN 1:1250



PROPOSED GROUND FLOOR PLAN

Revision	Date	Rev

Client **CORAL**

Project
141 CAMDEN HIGH STREET, LONDON, NW1 7JR

Title
PLANNING ISSUE

Scale 1:50,100 @ A1 Date JULY 2013

Drawn By NMP Checked By GLS

Dwg. No. 11/3679/02 Rev. .

Eaton Strevens Associates
 CHARTERED SURVEYORS

129 Crossbrook Street
 Cheshunt, Herts
 EN8 8LY
 Tel: 01992 638782/637510
 Fax: 01992 640364
 Email: eatonstrevens@btclick.com

File Path 2:\Coral\3679 - 141 Camden High Street\Drawings\Planning Issue

© This drawing is the copyright of Eaton Strevens Associates.