





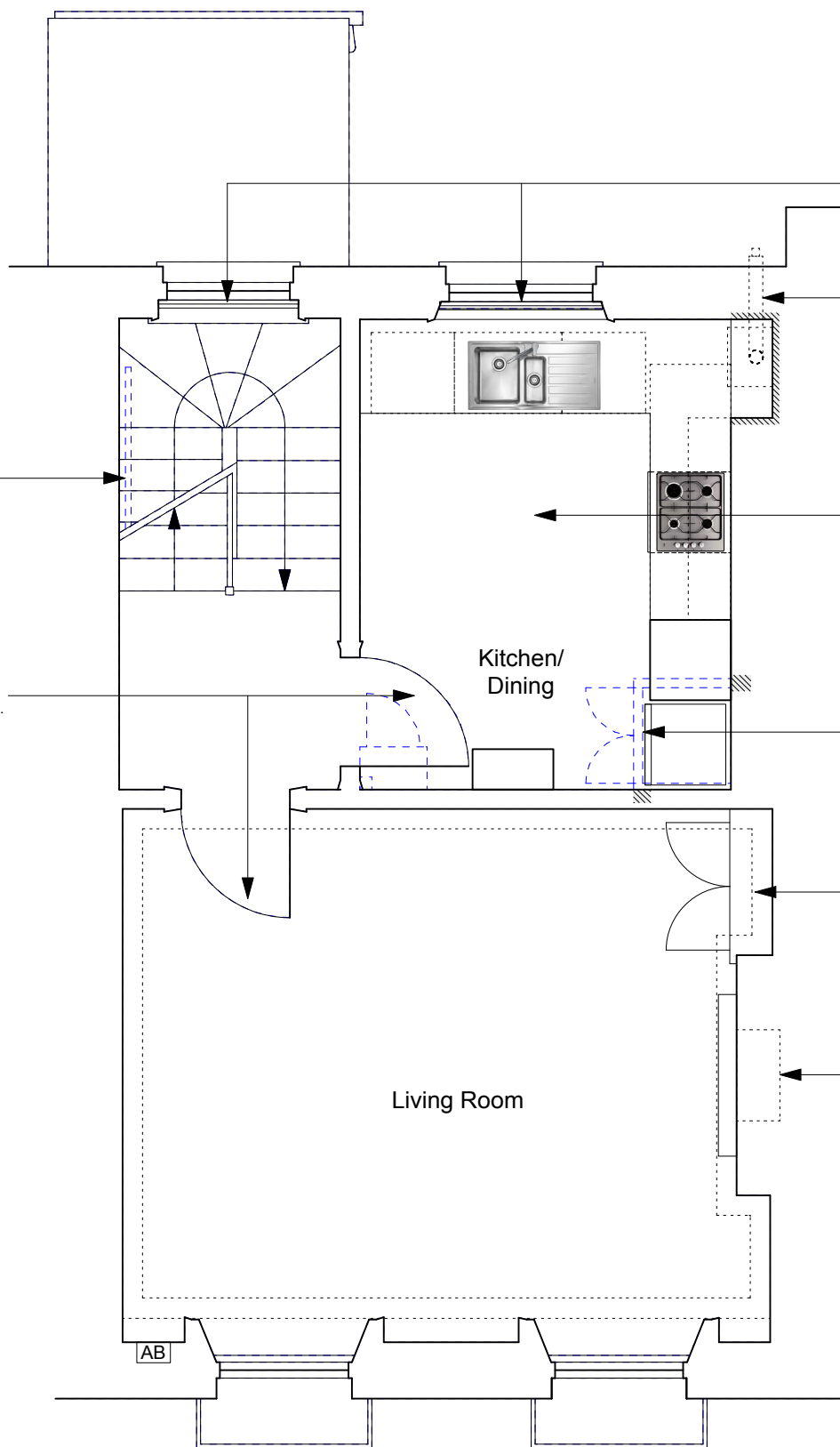
**CONSTRUCTION KEY**

-  existing retained
-  line over/under/behind
-  demolished
-  new construction



non-original mopstick handrail to be replaced with pigs ear handrail

original panelled door to be fire upgraded to FD30 fire resistance with Envirograf intumescent paint.



Selectaglaze secondary glazing system - as detail SG-04/05 drawings 6214-FAC-D01 & D02

new condensing boiler flue terminal (self-coloured black)

ceiling plasterboard to be replaced in kitchen (1 hour fire resisting).

existing (non-original) partitions and doors shown hatched where removed

new low level cupboard (panelled doors) to enclose gas meter moved from high level position in kitchen

blocking to fireplace opening to be removed. new mantelpiece & surround with opening modified and hearth tiled as drawing 6214-FAC-D101).

