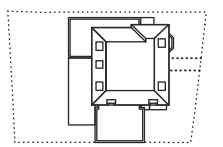


01 Proposed GF plan in site context

LINE OF PLANTED SLOPE TO SUNKEN GARDEN ORIGINALLY SUBMITTED AS PART OF APPLICATION - ALTERED TO STEEPER STEPPED TERRACE TO REDUCE IMPACT ON GARDEN SETTING AS DISCUSSED WITH PLANNING OFFICER

LINE OF SUNKEN GARDEN ORIGINALLY SUBMITTED AS PART OF APPLICATION - THIS HAS NOW BE REDUCED BY APPROXIMATELY 50%

REVISIONS		
- 07/05/13	P*	Issued for information to planning case officer
- 29/05/13	P-A	Issued for information to planning case officer
- 19/06/13	P-B	Issued for Approval to planning case officer - amendments to show revised sunken garden and grille to front lightwell



PLAN KEY

GREGORY PHILLIPS ARCHITECTS

CLIENT: Azmi Khalid & Fuziah Hussain
 PROJECT: Babour House, 53 Prigat, No.3
 DRAWING TITLE: Proposed GF plan in site context
 SCALE: 1:150 @ A2
 DATE: May 07th 2013