

P12101 Courtyard House

Proposed External Finish Materials
Application Ref: 2009/5102/P, condition 3

Propoerties Within the Neighbouring Area
Wildwood Lodge North End Facade



10 North End (Opposite Wildwood Lodge)
New build contemporary house



Wildwood Lodge view from North End Avenue



P12101 Courtyard House

Proposed External Finish Materials

Application Ref: 2009/5102/P, condition 3

Propoerties Within the Neighbouring Area

North End View Towards Sandy Heath



Wildwood Lodge Rear Elevation



North End View Towards Sandy Heath



P12101 Courtyard House

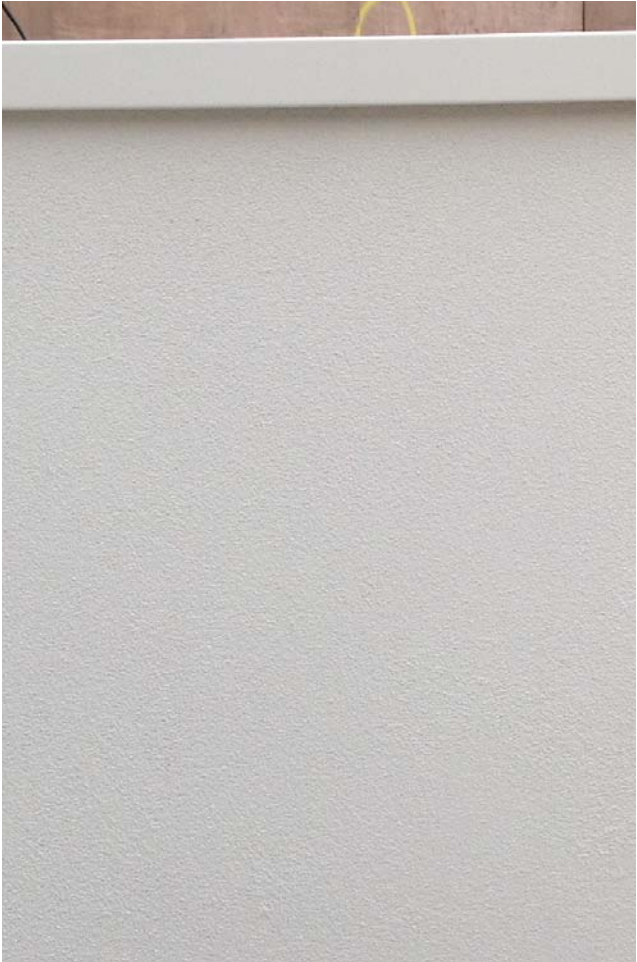
Proposed External Finish Materials

Application Ref: 2009/5102/P, condition 3

CANAWAY FLEMING ARCHITECTS

Proposed External Wall Finish - corner detail
white rendered wall with white aluminium coping

Close-up of Wall Finish



Proposed External Finish - Parapet and roof detail
dark grey single ply membrane with gravel ballast to roof



Proposed External Finish Materials
Application Ref: 2009/5102/P, condition 3

Proposed External Finish - 3D visuals



Proposed External Finish - front approach to entrance

permeable granular finish

dark grey stained timber deck and fence

gravel ballast on dark grey single ply membrane



Proposed External Finish - ground floor courtyard



Proposed External Finish - front approach (bird's eye view)