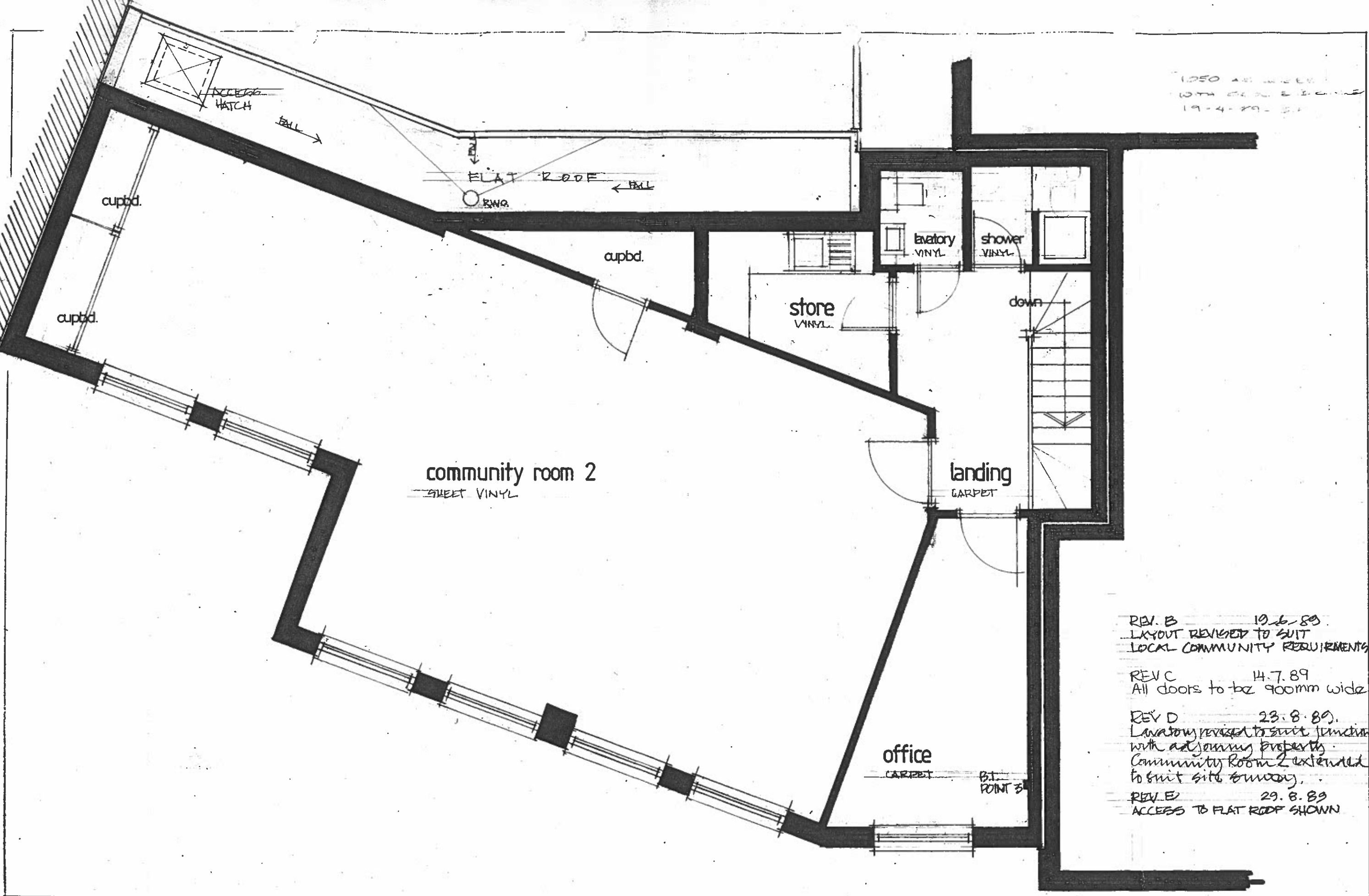


1050 AS SHOWN
WITH 200mm RISE
19-4-89-51



- REV. B 19.6.89
LAYOUT REVISED TO SUIT
LOCAL COMMUNITY REQUIREMENTS
- REV C 14.7.89
All doors to be 900mm wide
- REV D 23.8.89.
Lavatory revised to suit junction
with adjoining property.
Community Room 2 extended
to suit site survey.
- REV E 29.8.89
ACCESS TO FLAT ROOF SHOWN

First Floor Plan

Berridge House Site, Hillfield Road,
London NW6

LOCAL COMMUNITY CENTRE

398/101E David Landaw & Partners Scale 1:50
Greencoat House, Francis St.,
London SW1 P1DH January 1989

existing adjoining property

adjoining garden

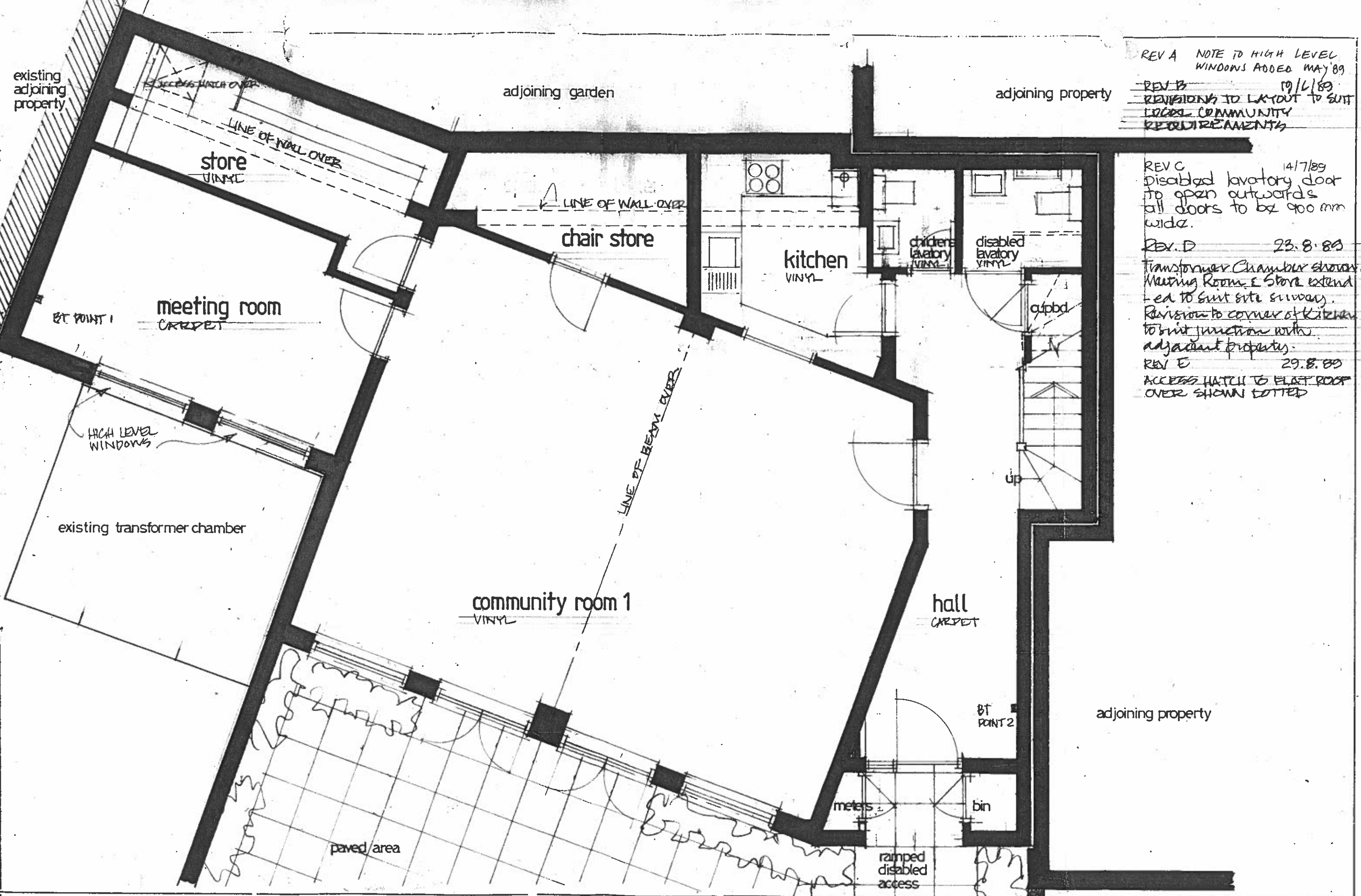
adjoining property

REV A NOTE TO HIGH LEVEL WINDOWS ADDED MAY '89
 REV B 19/1/89 REVISIONS TO LAYOUT TO SUIT LOCAL COMMUNITY REQUIREMENTS

REV C 14/7/89 Disabled lavatory door to open outwards & all doors to be 900 mm wide.

REV D 23.8.89 Transformer Chamber shown. Meeting Room & Store extended to suit site survey. Revision to corner of kitchen to suit junction with adjacent property.

REV E 29.8.89 ACCESS HATCH TO FLAT ROOF OVER SHOWN DOTTED



Ground Floor Plan

Berridge House Site, Hillfield Road,
 London NW6

LOCAL COMMUNITY CENTRE

David Landaw & Partners
 Greencoat House, Francis St.,
 London SW1 P1DH
 Scale 1:50
 January 1989

398/100 E