

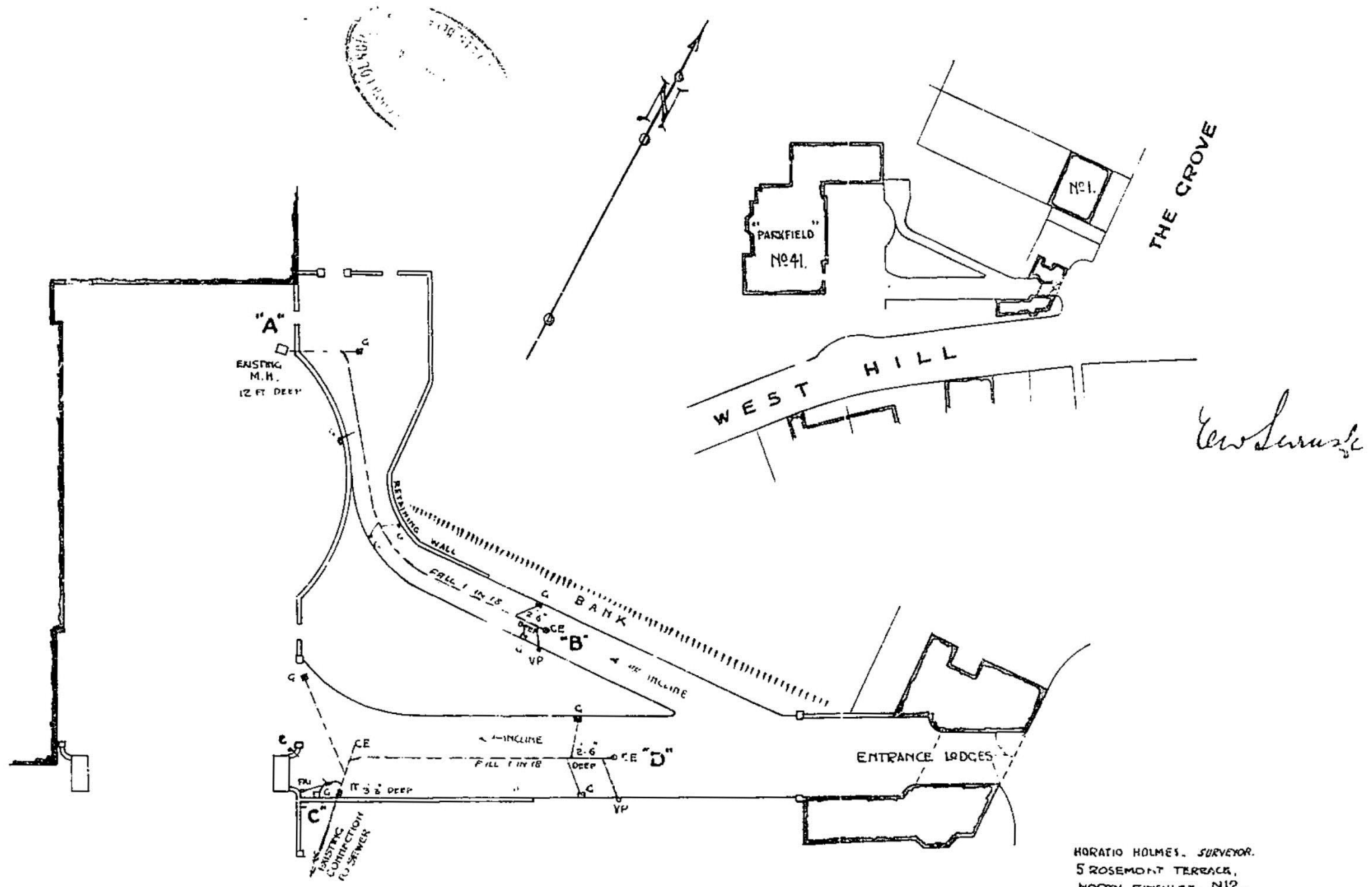
**APPENDIX A:** Archival Material (WCML)



ENTRANCE ROADS TO "PARKFIELD" FOR SIR ARTHUR CROSFIELD, BART. AND LADY CROSFIELD.  
41 WEST HILL, HIGHGATE, N6.

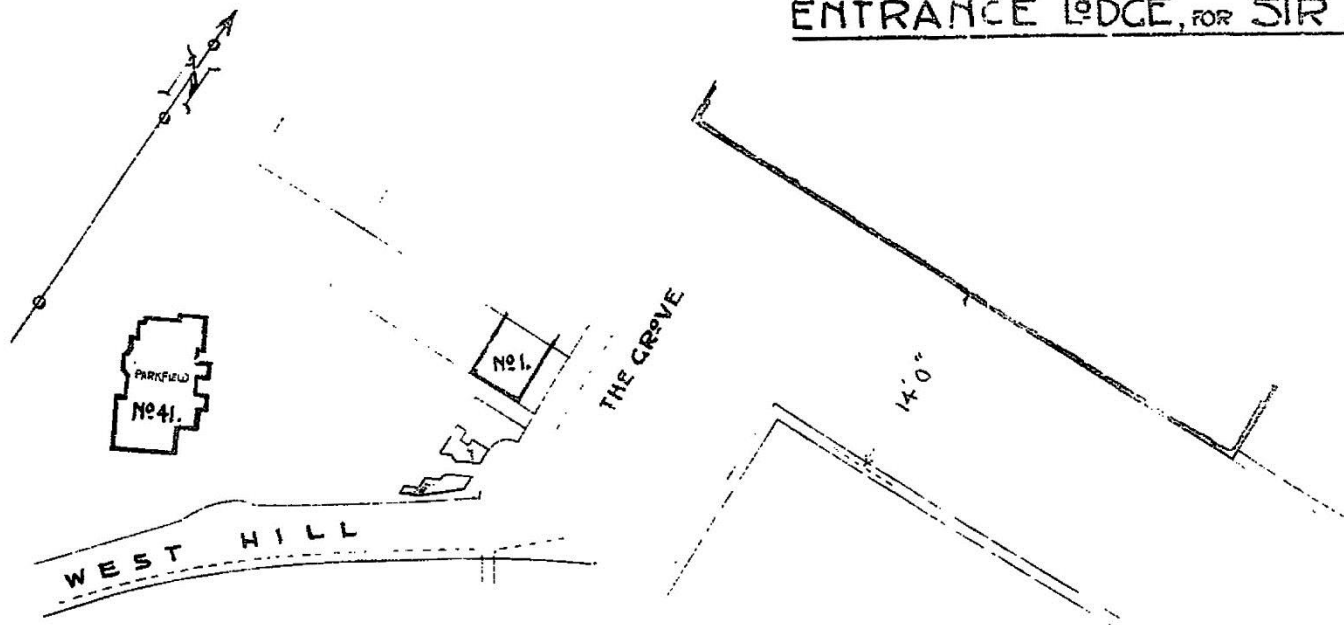
R.W.HILL(1927) LTD, BUILDERS.

14 ARCHWAY ROAD, N19. SCALE 5 22 & 88 FT. = 1 IN.

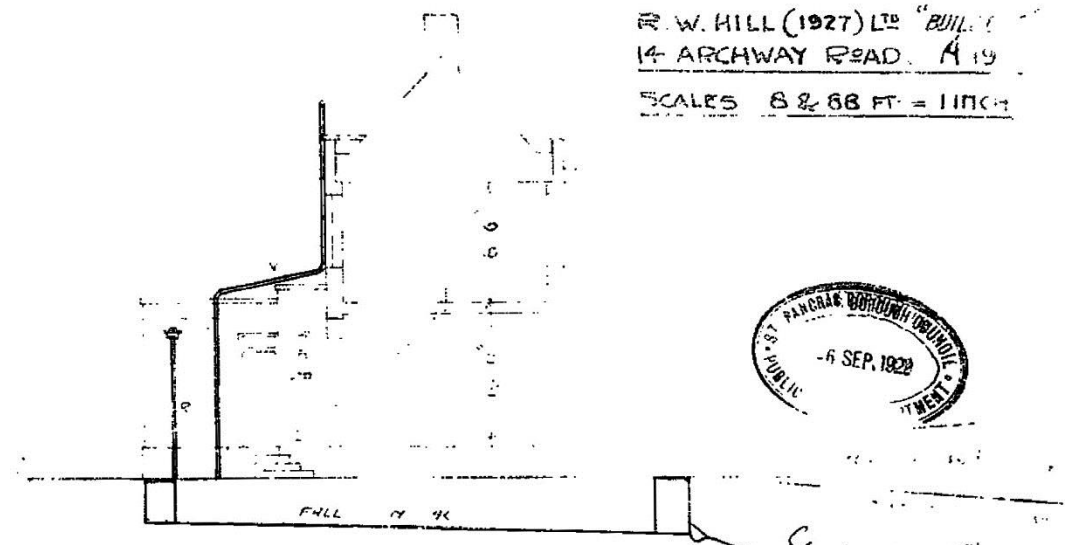


ENTRANCE LODGE, FOR SIR ARTHUR CROSFIELD BART. AND LADY CROSFIELD,  
41 WEST HILL, HIGHCATE, N6.

R. W. HILL (1927) LTD "BUILDERS"  
 14 ARCHWAY ROAD, A 19  
 SCALES 8 & 68 FT. = 1 INCH



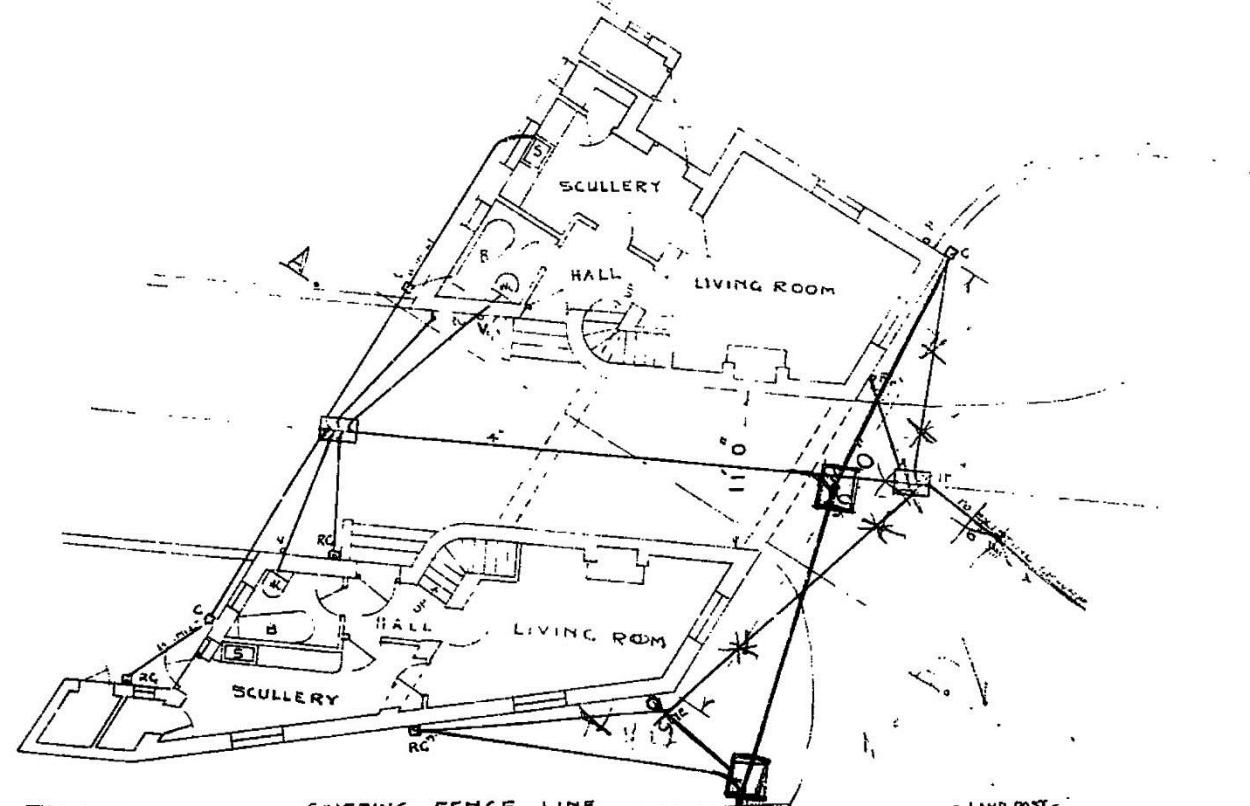
BLOCK PLAN.



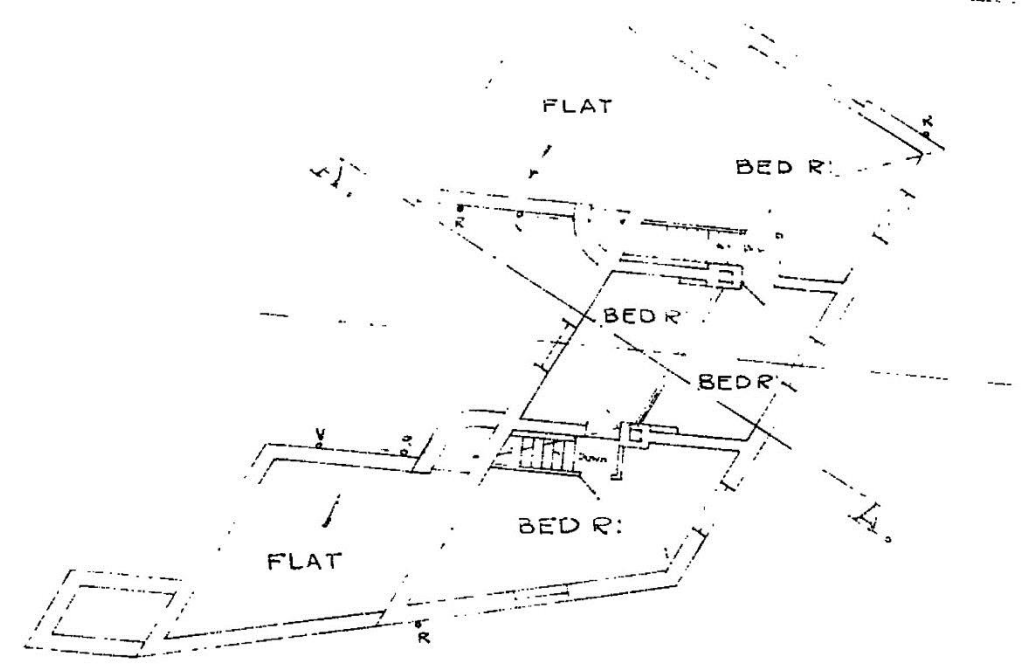
SECTION A-A.



*G. Gordon 10/9/28*  
*W. Winstanley 11/9/28*

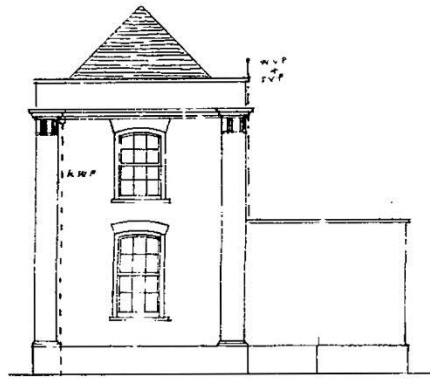


GROUND PLAN.

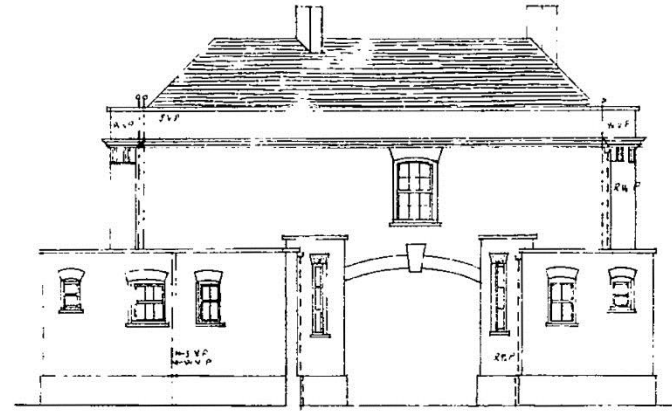


FIRST FLOOR.

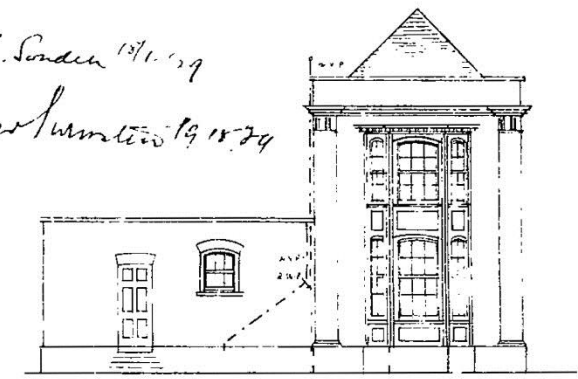
ENTRANCE LODGE AT 41 WEST HILL, HIGHGATE.  
 FOR SIR ARTHUR CROSFIELD, BART.  
 1/8 SCALE PLANS & ELEVATIONS SHOWING DRAINAGE.



NORTH ELEVATION

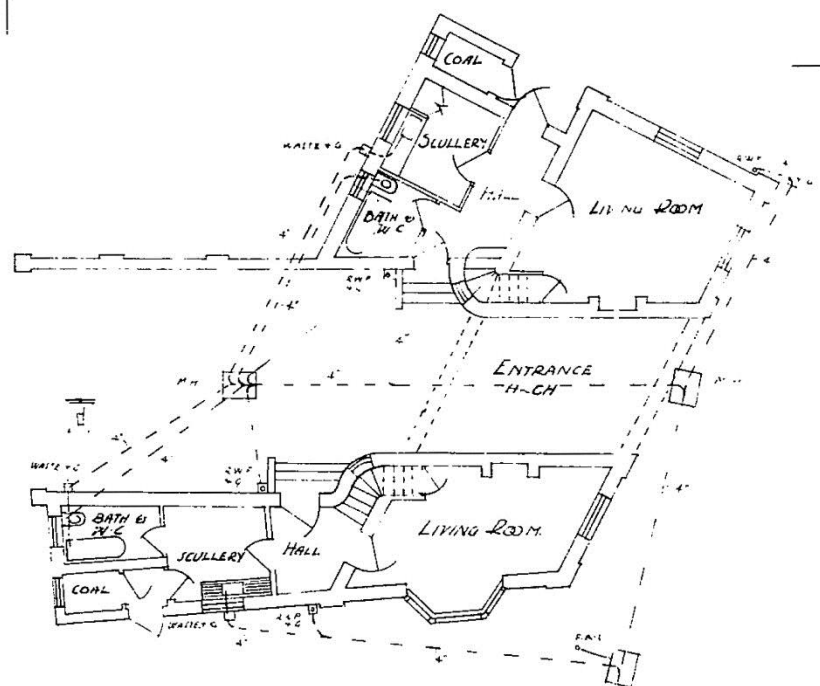
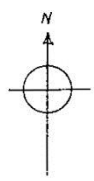


WEST ELEVATION

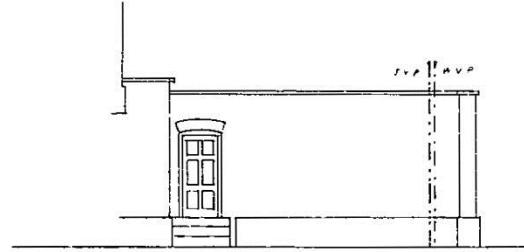


SOUTH ELEVATION

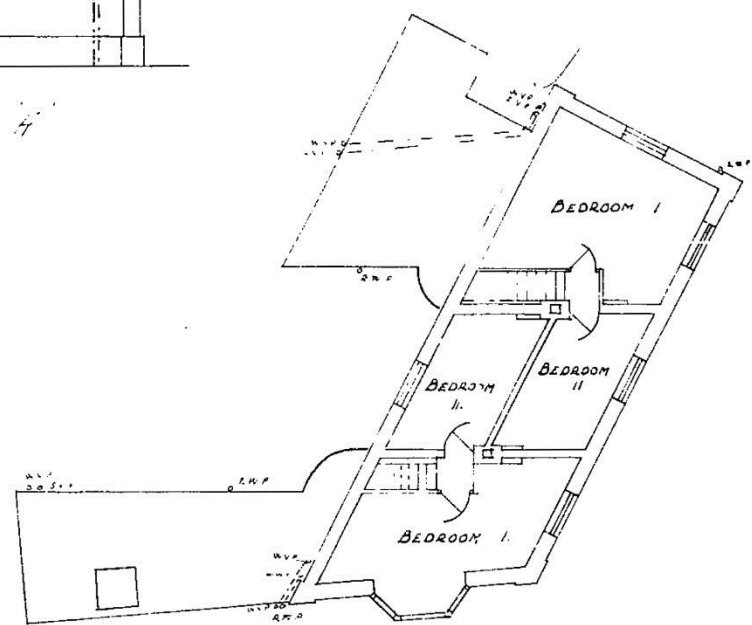
*G. Sinden 1911-12  
 Geo. Sumner 1918-24*



GROUND FLOOR PLAN



ELEVATION H

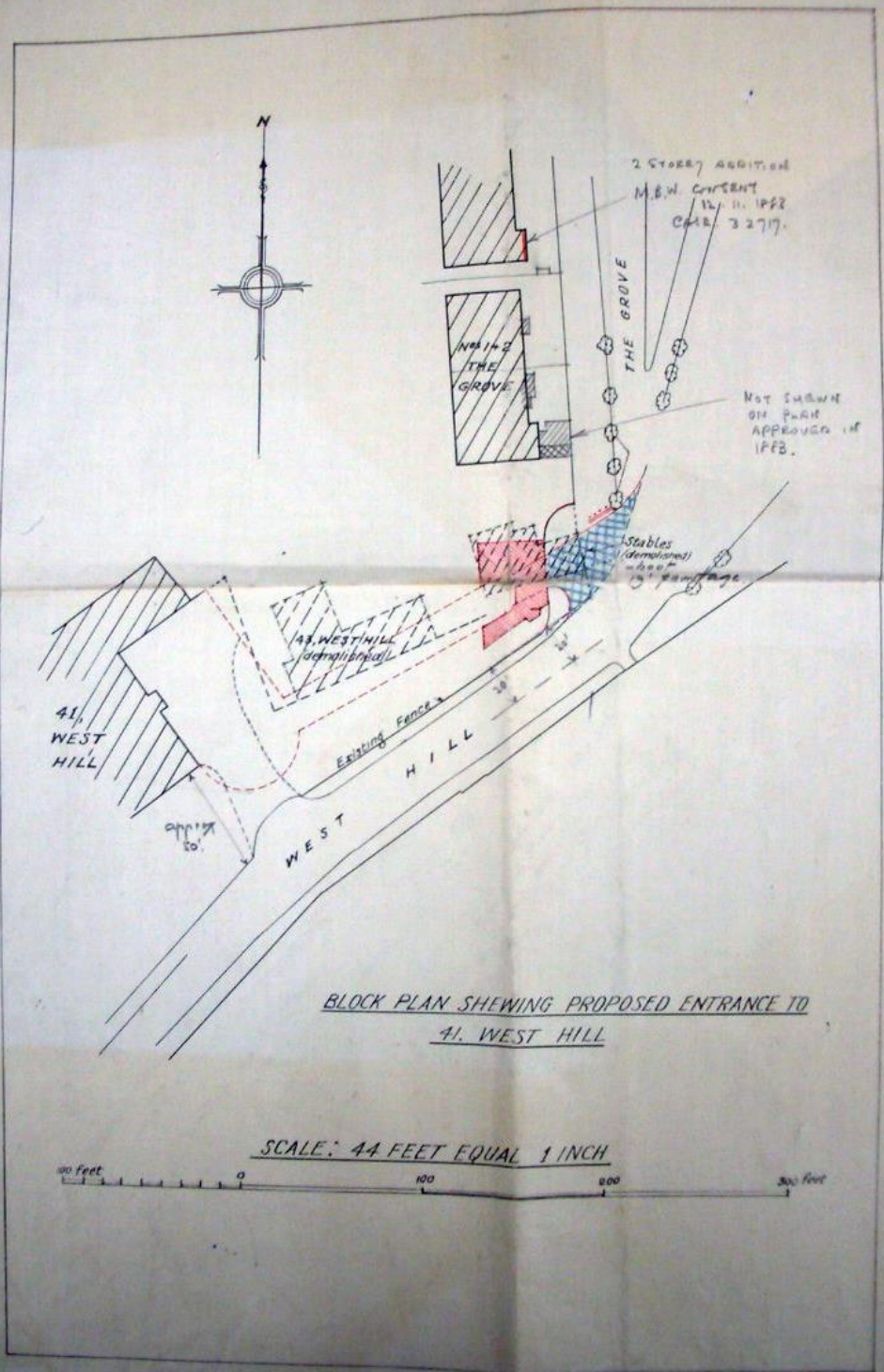


FIRST FLOOR PLAN

JOHN SEELY ARIBA & P  
 ARCHITECTS  
 5 QUEEN SQUARE PLAZA  
 QUEEN ANNE'S GATE  
 WESTMINSTER.

DECEMBER 1929

**PROPOSED LODGE AND ENTRANCE FOR  
SIR ARTHUR CROSFIELD, BART.  
AT  
41, WEST HILL, HIGHGATE.**

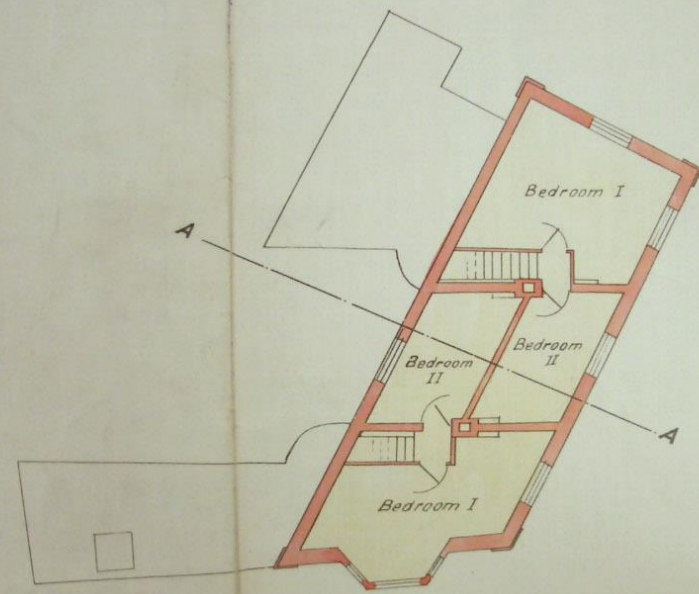


*BLOCK PLAN SHEWING PROPOSED ENTRANCE TO  
41, WEST HILL*

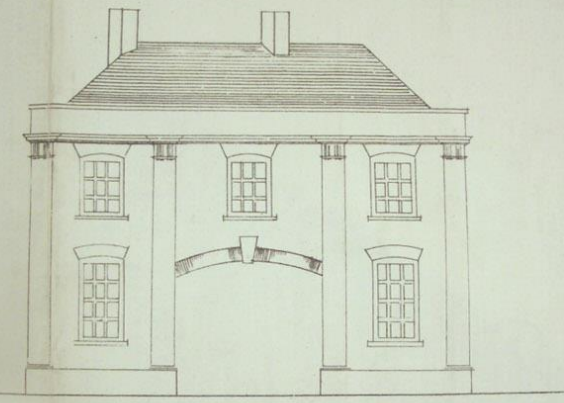
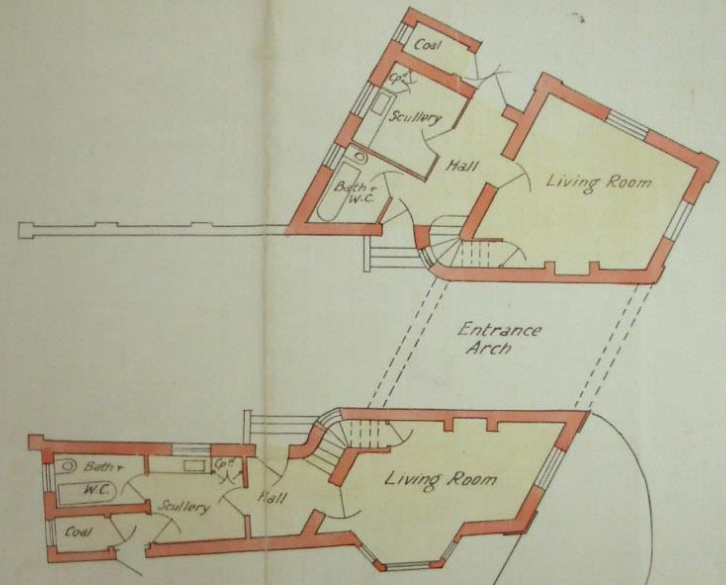
*SCALE: 44 FEET EQUAL 1 INCH*

0 100 200 300 Feet

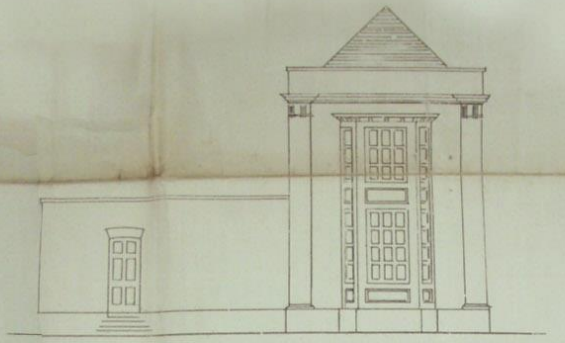
September, 1929.



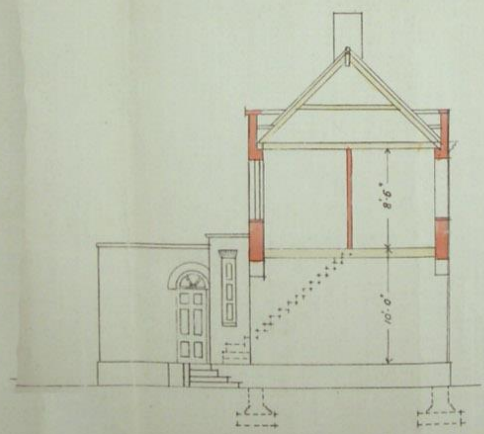
*FIRST FLOOR PLAN*



*EAST ELEVATION*



*SOUTH ELEVATION*



*SECTION A-A*

**PROJECT H — GATEHOUSE PLANNING APPLICATION**  
ARCHIVE PLANS & ELEVATIONS FROM 1929



**PROJECT H** — GATEHOUSE PLANNING APPLICATION  
ARCHIVE PHOTOGRAPHS FROM 1970'S



PROJECT H — GATEHOUSE PLANNING APPLICATION  
ARCHIVE PHOTOGRAPHS FROM 2008



PROJECT H — GATEHOUSE PLANNING APPLICATION  
ARCHIVE PHOTOGRAPHS OF GATE FROM 2008