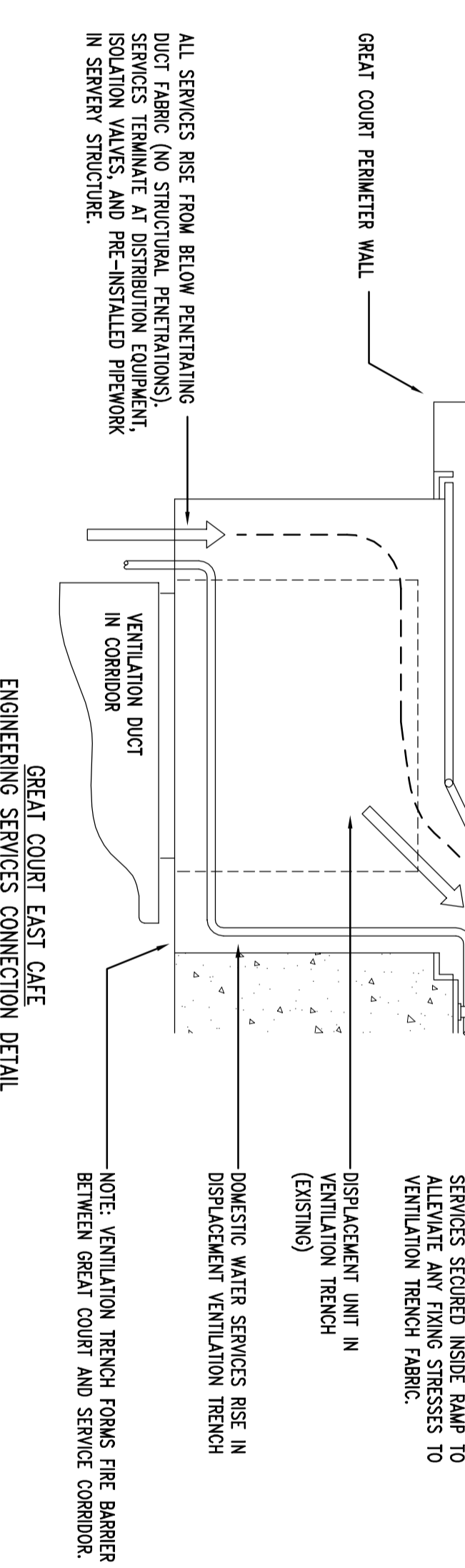


GREAT COURT EAST CAFE
INFRASTRUCTURE MODIFICATIONS TO SERVICE PROPOSED LOCATION
LEVEL 1 – LOCATION PLAN

GREAT COURT EAST CAFE
INFRASTRUCTURE MODIFICATIONS TO SERVICE PROPOSED LOCATION
LEVEL 2 – LOCATION PLAN

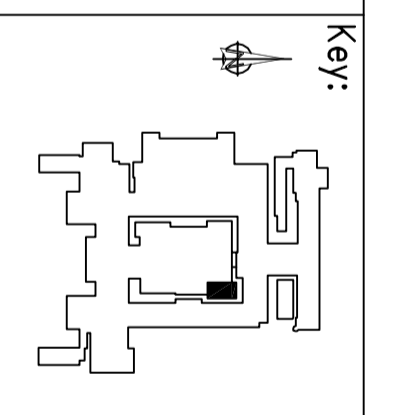
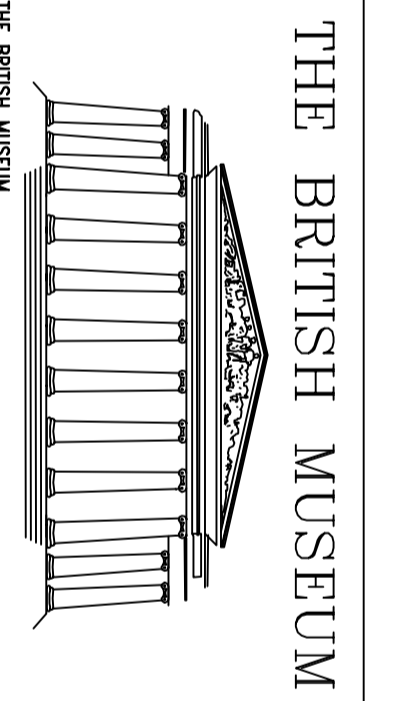


GREAT COURT EAST CAFE
ENGINEERING SERVICES CONNECTION DETAIL

ISSUED FOR LISTED
BUILDING CONSENT

| AI | Date | Modification | AI | Date | Modification | AI | Date | Modification | AI | Date | Modification |
|----|-------|---|----|----------|--------------|----|----------|--------------|----|----------|--------------|
| P1 | 07/02 | MINOR COMMENTS ADDRESSED | AI | 01/01/13 | APP | AI | 01/01/13 | APP | AI | 01/01/13 | APP |
| P2 | 27/06 | REDRAWN AT A1 | AI | 01/01/13 | APP | AI | 01/01/13 | APP | AI | 01/01/13 | APP |
| P3 | 22/06 | MECHANICAL SERVICES REMOVED, REVISED SUB MAIN ROUTE AT L2. GENERAL MODS TO NOTES. | AI | 01/01/13 | APP | AI | 01/01/13 | APP | AI | 01/01/13 | APP |

| | | |
|--|------------------------|---|
| Contractor: | Scale: | Title: |
| tga CONSULTING ENGINEERS TGA Consulting Engineers LLP, The Regency Centre, 100 Old Street, London EC1A 3RU E: info@tgaengineers.co.uk T: 0181 3862314 JRS 100 Old Street SWW Date: JUNE 2013 Date: JUNE 2013 Date: JUNE 2013 | 1:100 (A1) MIS (A3) | LEVEL 2 GREAT COURT EAST CAFE PROPOSED MODIFICATIONS TO EXISTING ELECTRICAL ENGINEERING SERVICES |
| Approved: SJO Date: JUNE 2013 Drawing No: 7244-TGA-E-7020 | | Rev: P3 |



TGA No. S:\7244\1\1\B\7244-TGA-E-7020