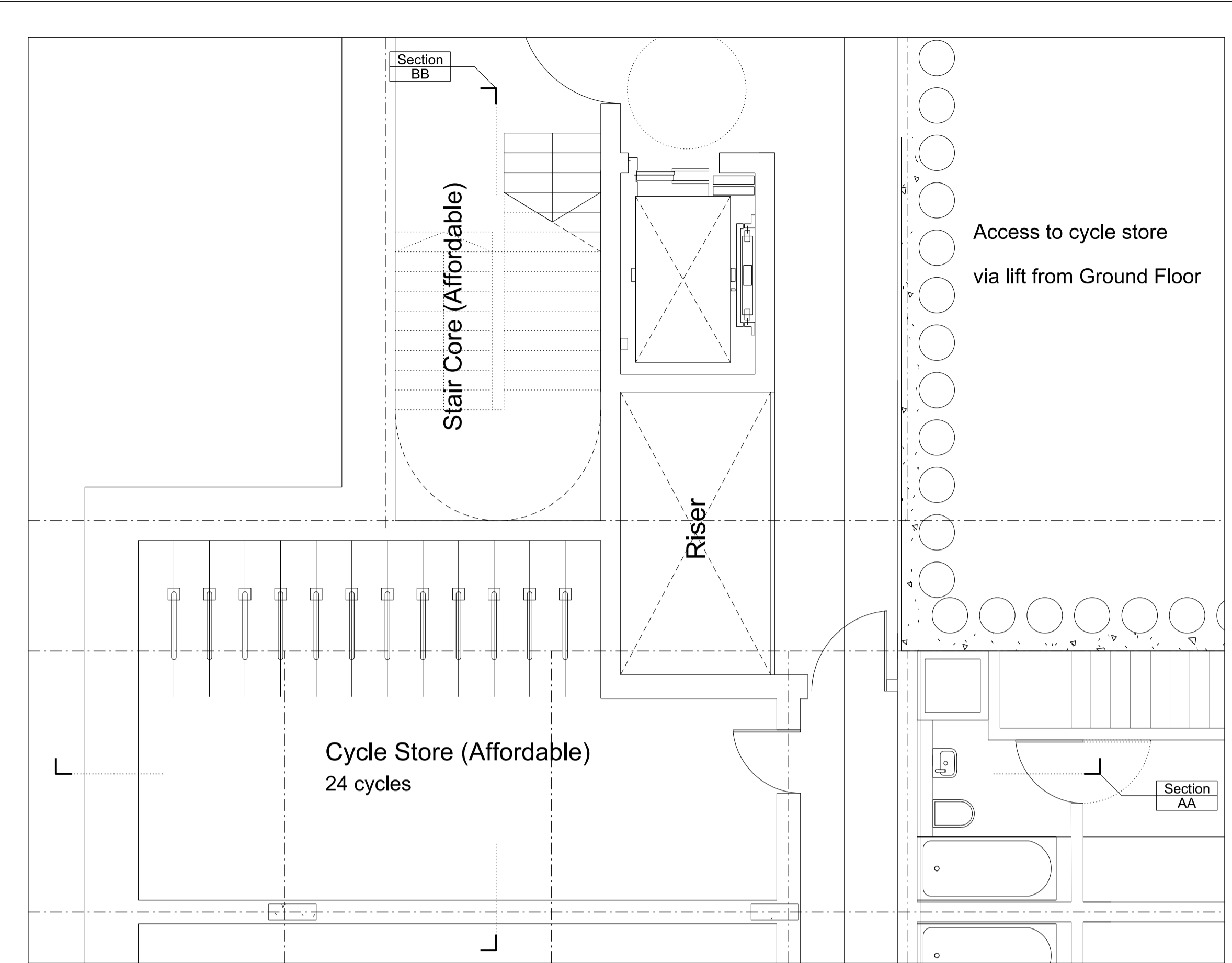
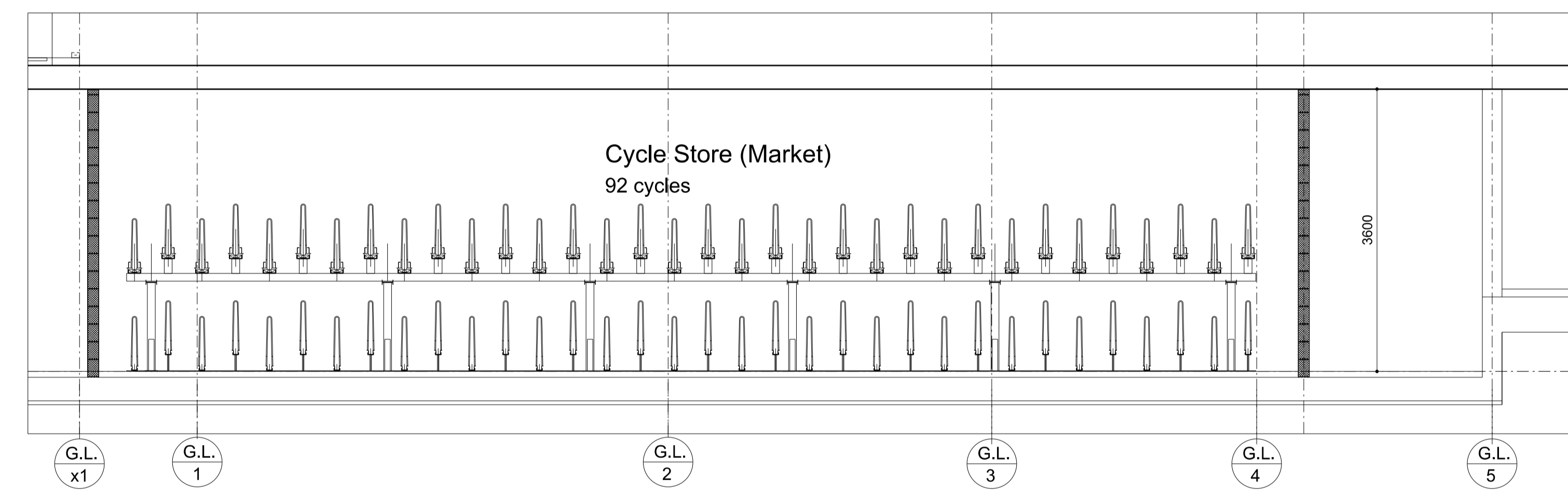


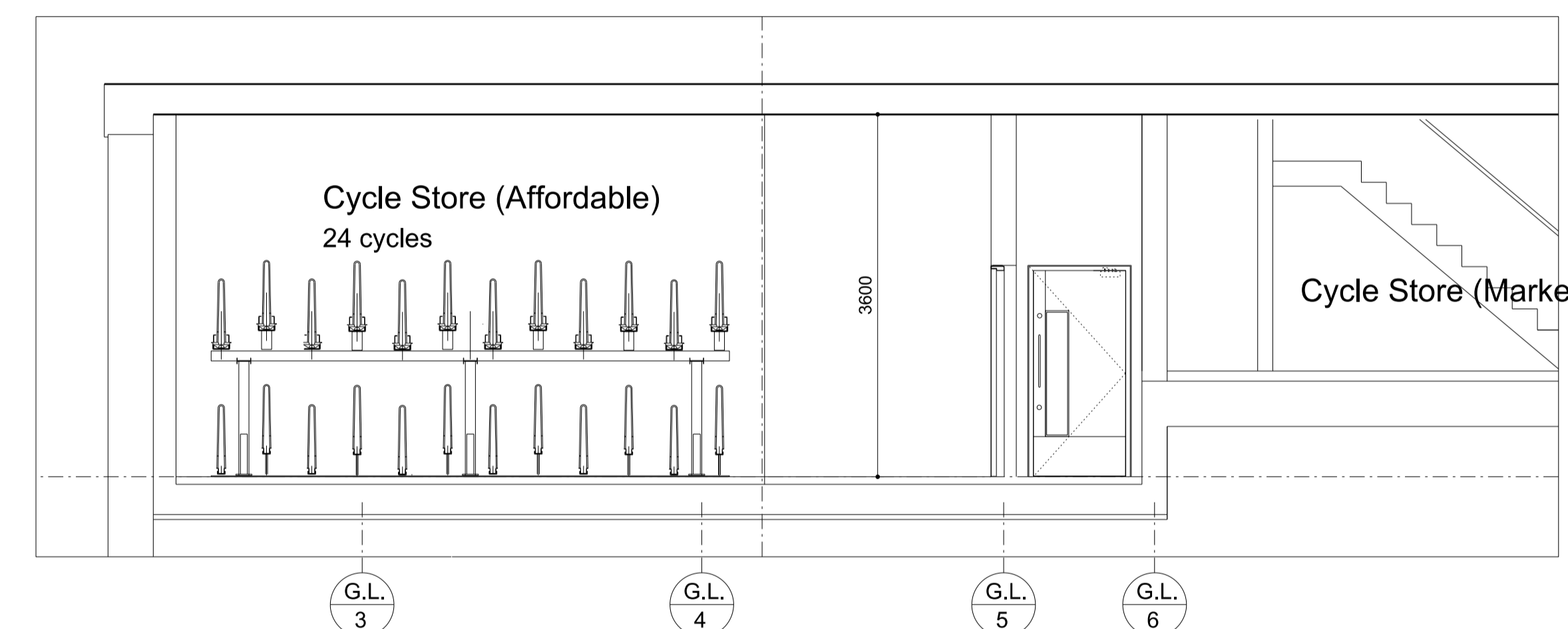
01 Plan of Private Cycle Store - 92 cycles



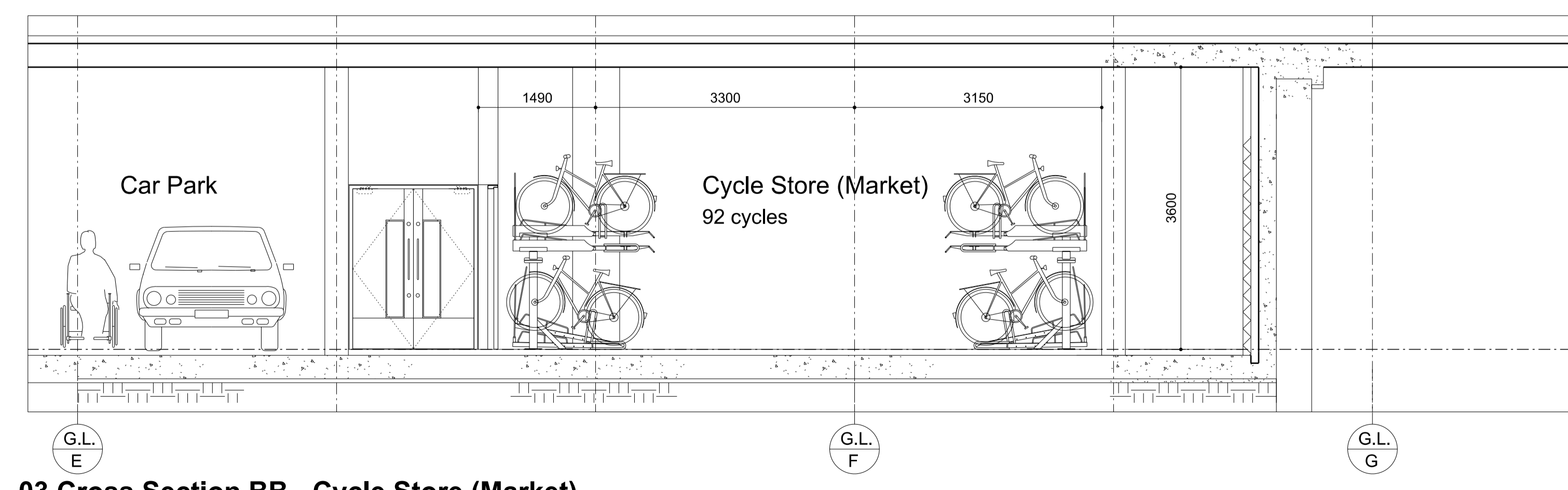
04 Plan of Affordable Cycle Store - 24 Cycles



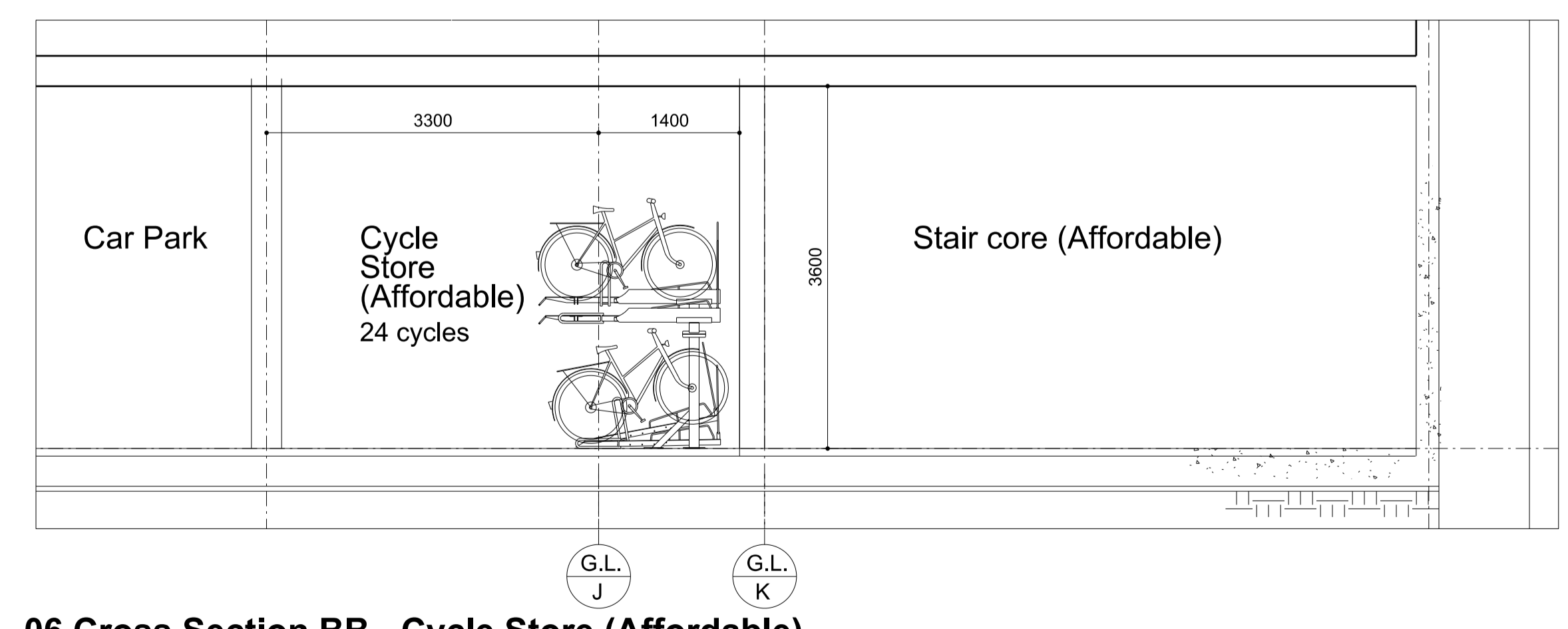
02 Long Section AA - Cycle Store (Market)



05 Long Section AA - Cycle Store (Affordable)



03 Cross Section BB - Cycle Store (Market)



06 Cross Section BB - Cycle Store (Affordable)

- General Notes:**
- G1 For Site and Grid setting out refer to AMRH/0000
 - G2 All dimensions to be checked on site
 - G3 Any discrepancies between drawings to be reported to the Architect immediately.
 - G4 All Levels are above ordnance datum (AOD)
 New Levels are shown thus: [Symbol] EX-20.345
 Existing Levels are shown thus: [Symbol] EX-20.345
 Retained Existing Levels: [Symbol] EX-20.345
 - G5 Use figured dimensions only. Do not scale from drawings. IF IN DOUBT, ASK.
 - G6 Refer to Structural Engineers drawings for all structural and services information.
 - G7 For tolerances see the Design Drawings and Specifications.
 - G8 For elements of work subject to Contractor's Design, this drawing is indicative of the visual & performance requirements only. The Contractor is responsible for the detailed design and coordination of the installation within the parameters defined in the specification, design drawings, contract terms and contract documents.
 - G9 Room numbers are shown thus: [Symbol] 115
 - G10 Door(D) & Window (W) References are shown thus: [Symbol]
 - G11 Clear height is shown thus (finished floor to finished soffit) [Symbol] 2150
 - G12 T Sheet Reference shown thus [Symbol] B15-01
 - G13 Finishes are shown thus: [Symbol]
 - G14 Setting Out Points shown thus: [Symbol] SOP
 - G15 Refer to AMRH/9100 for T Sheet references, and to AMRH/102 for Architectural Specifications.

N

PC Planning Condition Discharge

Work Package	Cost Check	Info/Briefing	Tender	Contract	Construction	Date 03/05/13	Ref.	Revision Issued to LBC towards discharging PC condition 9 & PO condition 15 (Secure Cycle storage) Memo_076	Approved PN	Date	Revision	Description	Approved	Project Maygrove Road Housing	Subject Basement Cycle Parking - Affordable & Market	Architects Hopkins Architects Partnership LLP 27 Broadley Terrace, London, NW1 6LG T: 020 7724 1751 E: mail@hopkins.co.uk	Sort Code A/MRH	Drawing Number 5700	Rev. -	Date 02.05.2013	Scale 1:50	at A1
--------------	------------	---------------	--------	----------	--------------	------------------	------	--	----------------	------	----------	-------------	----------	----------------------------------	---	--	--------------------	------------------------	-----------	--------------------	---------------	-------