

Issued For

General Notes:
THIS DRAWING HAS BEEN PREPARED BY DS DESIGN SOLUTIONS AND THE DATA CONTAINED HEREIN MAY BE USED OR REPRODUCED ONLY WITH DS DESIGN SOLUTIONS' APPROVAL.

Rev.	Description	Date	Signed	Checked

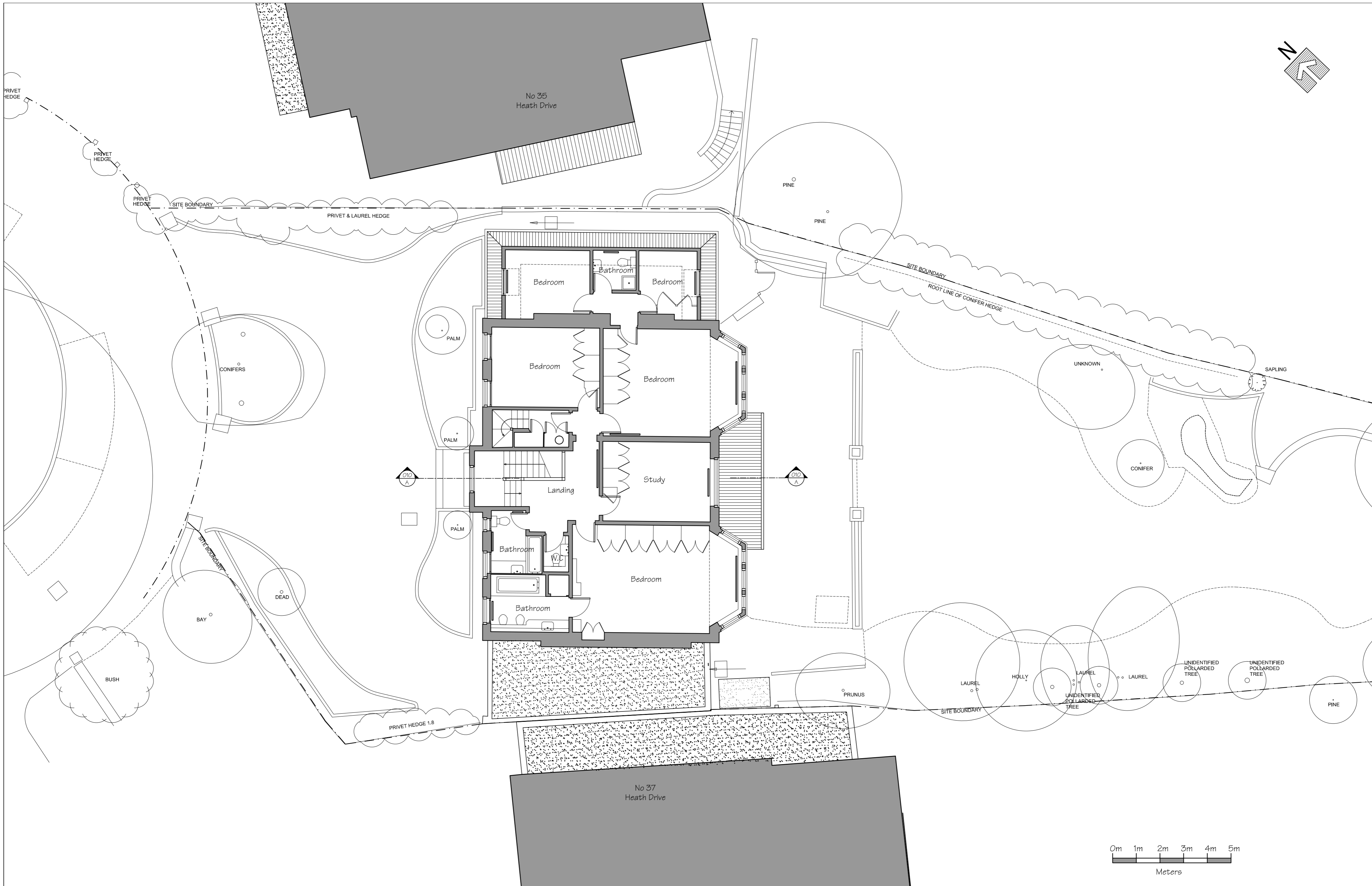
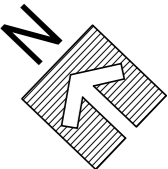
--

--

Drawing Scale = 1:100 @ A2
1:200 @ A4

Scale	Date	Drawn by	Checked by
1:100 @ A2	04.04.2012	DS	DS
Drawing Title Ground Floor Plan As Existing			
Project 36 Heath Drive London NW3 7SD			

	Studio 18, Liddell Road London N17 6 2EW Phone 020 7624 6680 Fax 020 7624 6681 www.DesignSolutionsUK.com	
	Project no. 2012/0265	Drawing no. 002



Issued For

General Notes:
THIS DRAWING HAS BEEN PREPARED BY DS DESIGN SOLUTIONS AND THE DATA CONTAINED HEREIN MAY BE USED OR REPRODUCED ONLY WITH DS DESIGN SOLUTIONS' APPROVAL.

Rev.	Description	Date	Signed	Checked

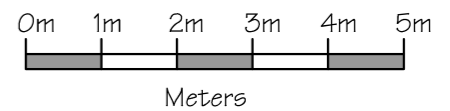
--	--

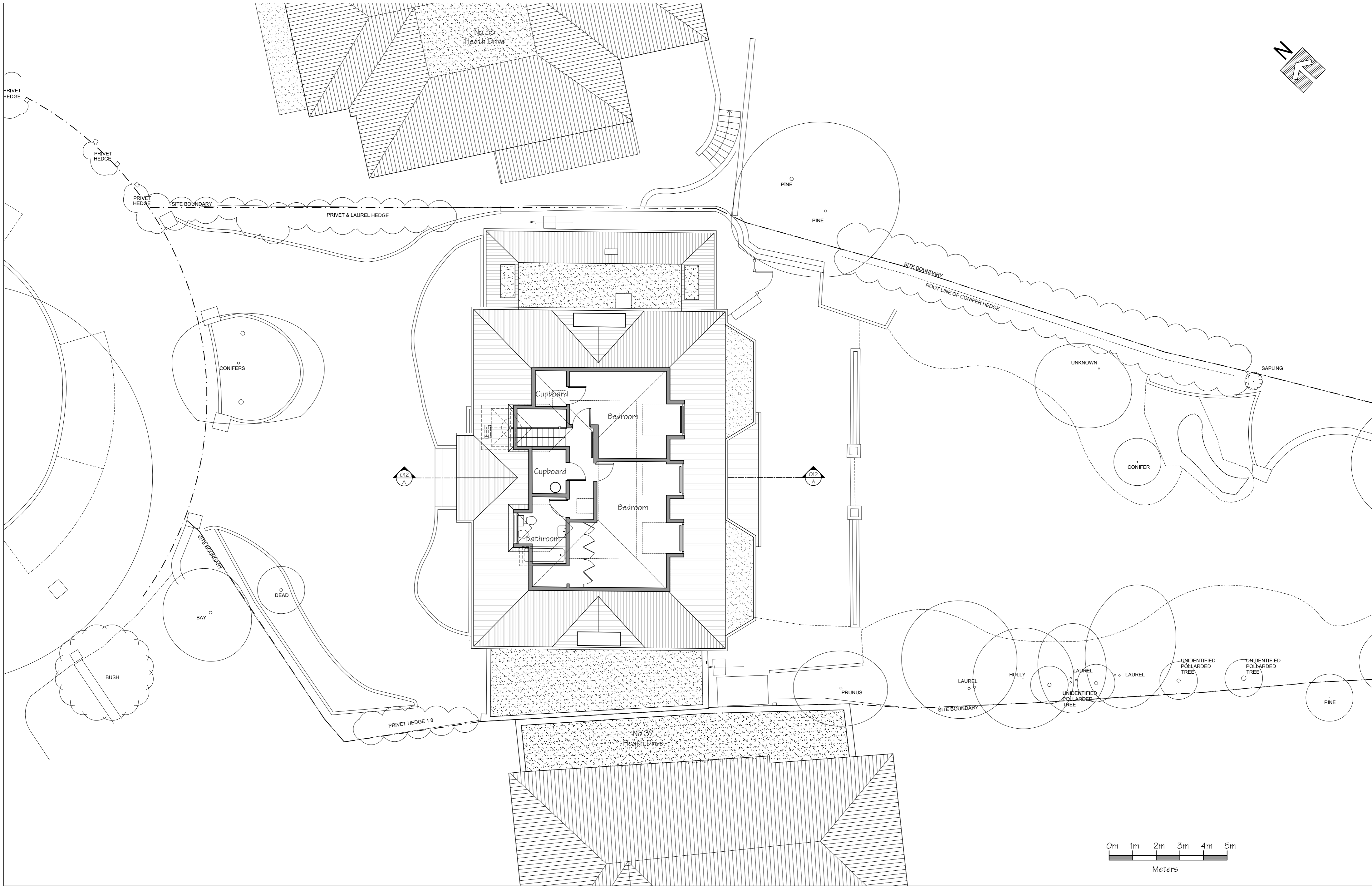
--	--

Drawing Scale = 1:100 @ A2
1:200 @ A4

Scale	Date	Drawn by	Checked by
1:100 @ A2	04.04.2012	DS	DS
Drawing Title First Floor Plan As Existing			
Project 36 Heath Drive London NW3 7SD			

	Studio 18, Liddell Road London NW6 2EW Phone 020 7624 6680 Fax 020 7624 6681 www.DesignSolutionsUK.com	
	Project no. 2012/0265	Drawing no. 003





Issued For

General Notes:
 THIS DRAWING HAS BEEN PREPARED BY DS DESIGN SOLUTIONS AND THE DATA CONTAINED HEREIN MAY BE USED OR REPRODUCED ONLY WITH DS DESIGN SOLUTIONS' APPROVAL.


Rev.	Description	Date	Signed	Checked

--	--

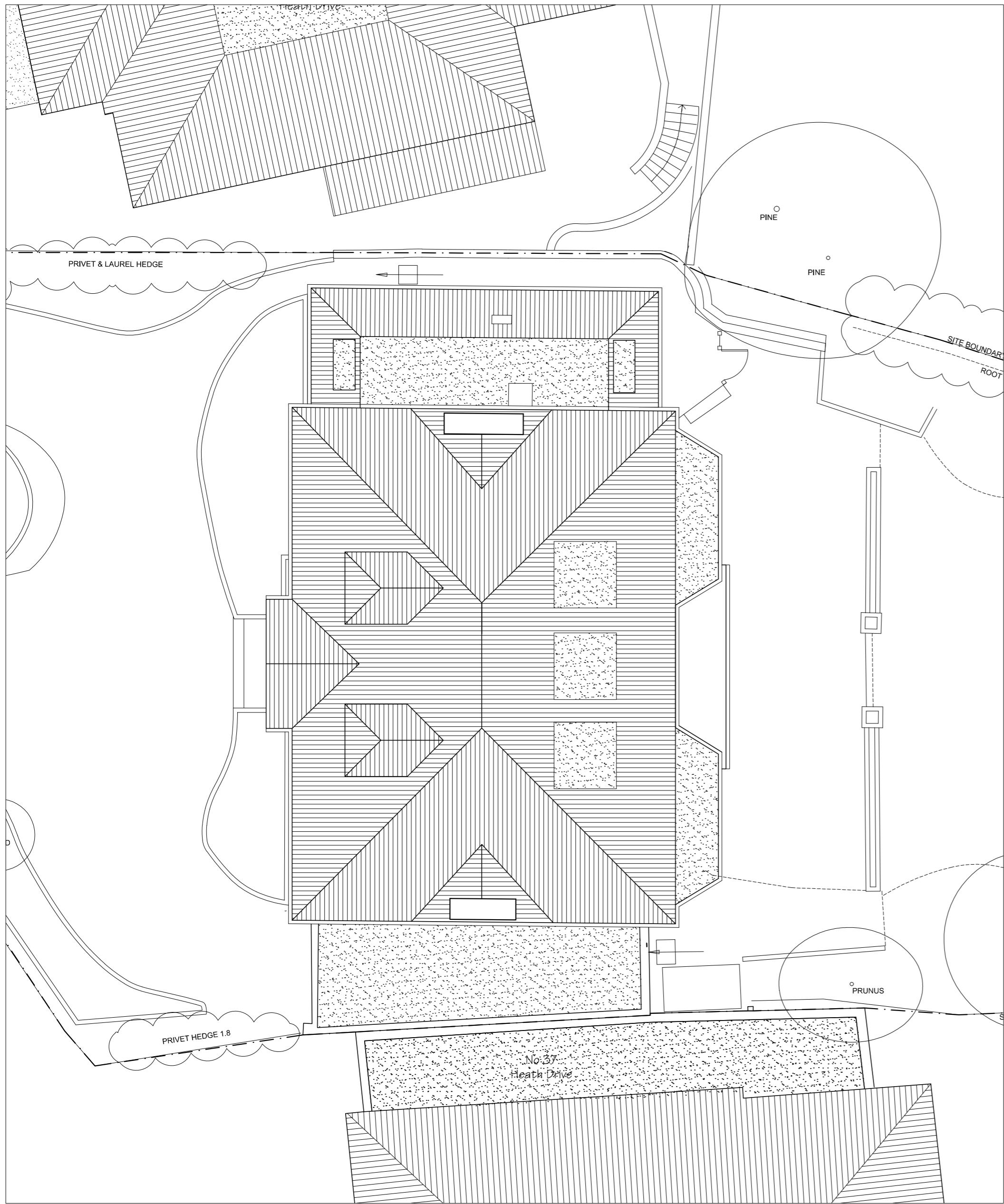
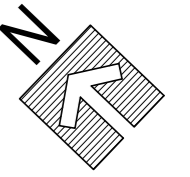
--	--

Drawing Scale = 1:100 @ A2
 1:200 @ A4

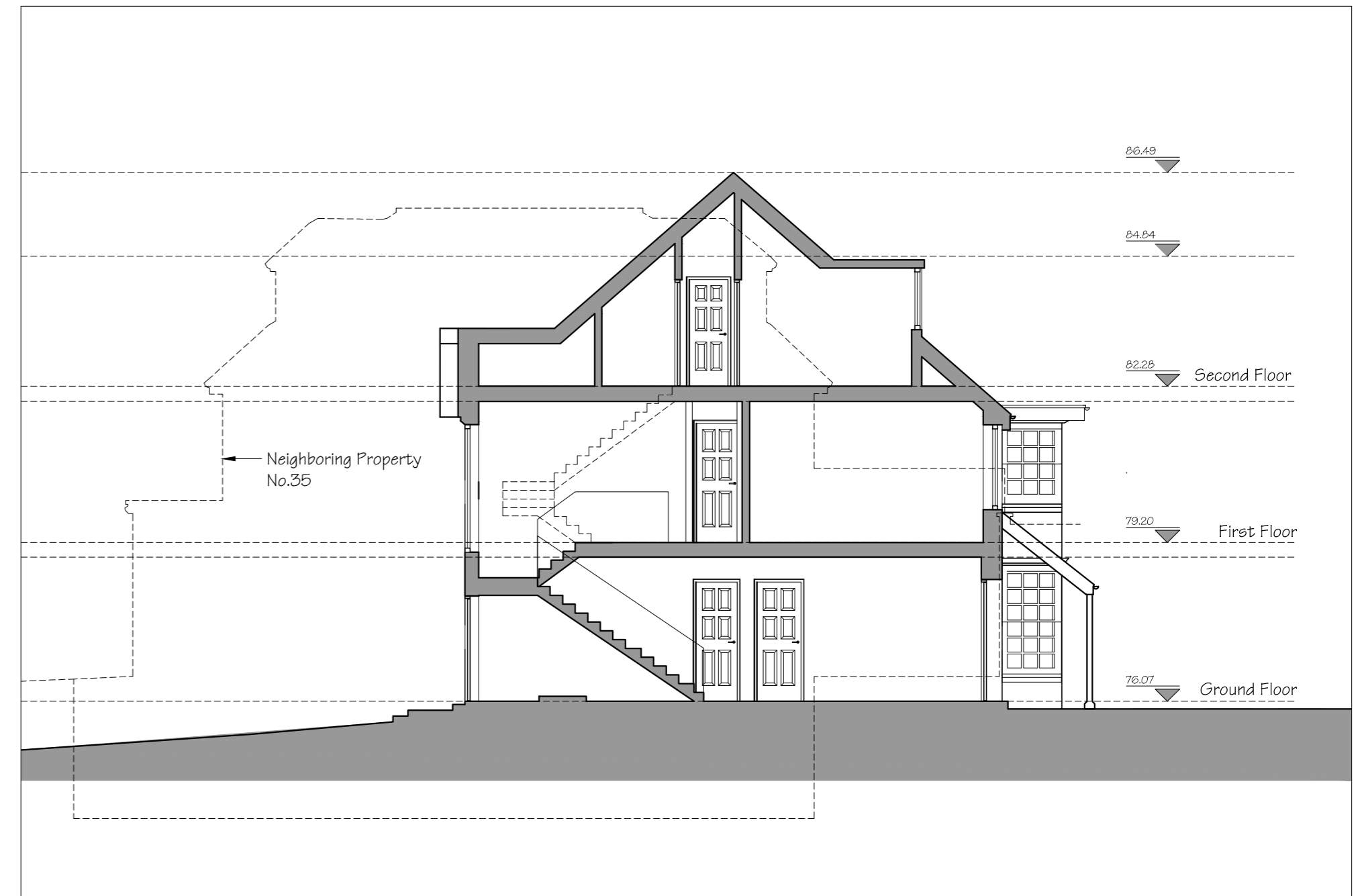
Scale	Date	Drawn by	Checked by
1:100 @ A2	04.04.2012	DS	DS
Drawing Title Second Floor Plan As Existing			
Project 36 Heath Drive London NW3 7SD			

 design solutions www.DesignSolutionsUK.com	Studio 18, Liddell Road London NW6 2EW Phone 020 7624 6680 Fax 020 7624 6681
	Project no. 2012/0265

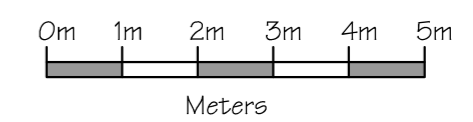
Drawing no. 004	Revision 00
--------------------	----------------



Existing Roof Plan



Existing Section A-A



General Notes:
THIS DRAWING HAS BEEN PREPARED BY DS DESIGN SOLUTIONS AND THE DATA CONTAINED HEREIN MAY BE USED OR REPRODUCED ONLY WITH DS DESIGN SOLUTIONS' APPROVAL.

Rev.	Description	Date	Signed	Checked

--	--

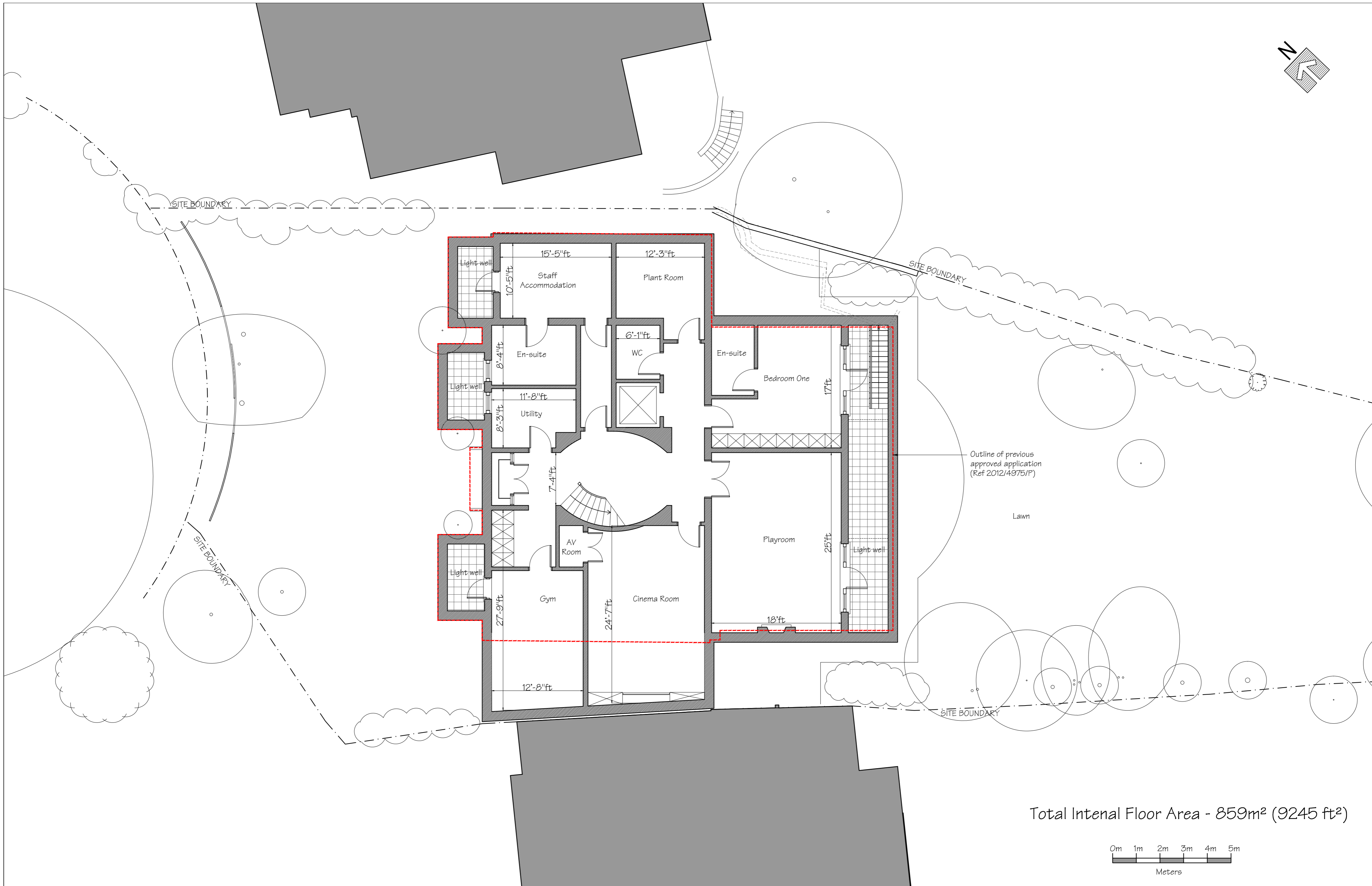
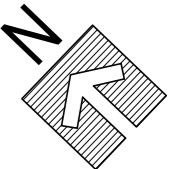
--	--

Drawing Scale = 1:100 @ A2
1:200 @ A4

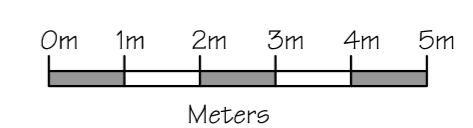
Scale	Date	Drawn by	Checked by
1:100 @ A2	04.04.2012	DS	DS
Drawing Title Roof Plan and Section A-A As Existing			
Project 36 Heath Drive London NW3 7SD			


 Studio 18, Liddell Road
 London NW3 7SD
 Phone: 020 7624 6680
 Fax: 020 7624 6681
 www.DesignSolutionsUK.com

Project no.	Drawing no.	Revision
2012/0265	005	00



Total Internal Floor Area - 859m² (9245 ft²)



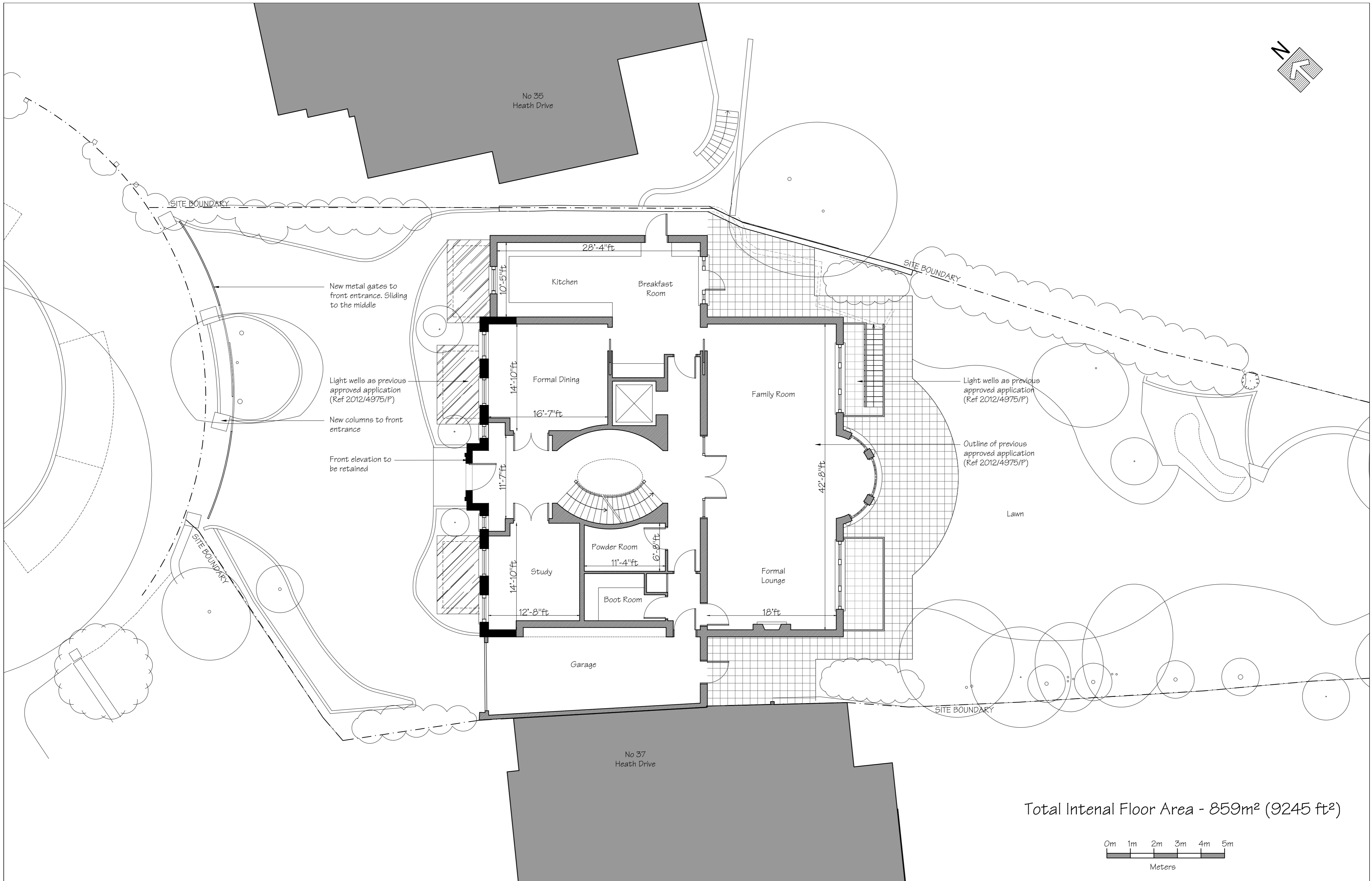
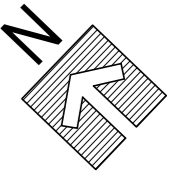
Issued For
 General Notes:
 THIS DRAWING HAS BEEN PREPARED BY DS DESIGN SOLUTIONS AND THE DATA CONTAINED HEREIN MAY BE USED OR REPRODUCED ONLY WITH DS DESIGN SOLUTIONS' APPROVAL.

Rev.	Description	Date	Signed	Checked

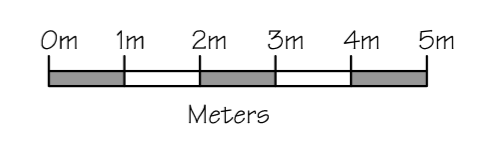
Drawing Scale = 1:100 @ A2
 1:200 @ A4

Scale	Date	Drawn by	Checked by
1:100 @ A2	22.02.2013	ME	DS
Drawing Title Lower Ground Floor Plan As Proposed			
Project 36 Heath Drive London NW3 7SD			

	Studio 18, Liddell Road London NW6 2EW Phone 020 7624 6680 Fax 020 7624 6681 www.DesignSolutionsUK.com	
	Project no. 2012/0265	Drawing no. 101



Total Internal Floor Area - 859m² (9245 ft²)



Issued For
 General Notes:
 THIS DRAWING HAS BEEN PREPARED BY DS DESIGN SOLUTIONS AND THE DATA CONTAINED HEREIN MAY BE USED OR REPRODUCED ONLY WITH DS DESIGN SOLUTIONS' APPROVAL.


Rev.	Description	Date	Signed	Checked

--	--

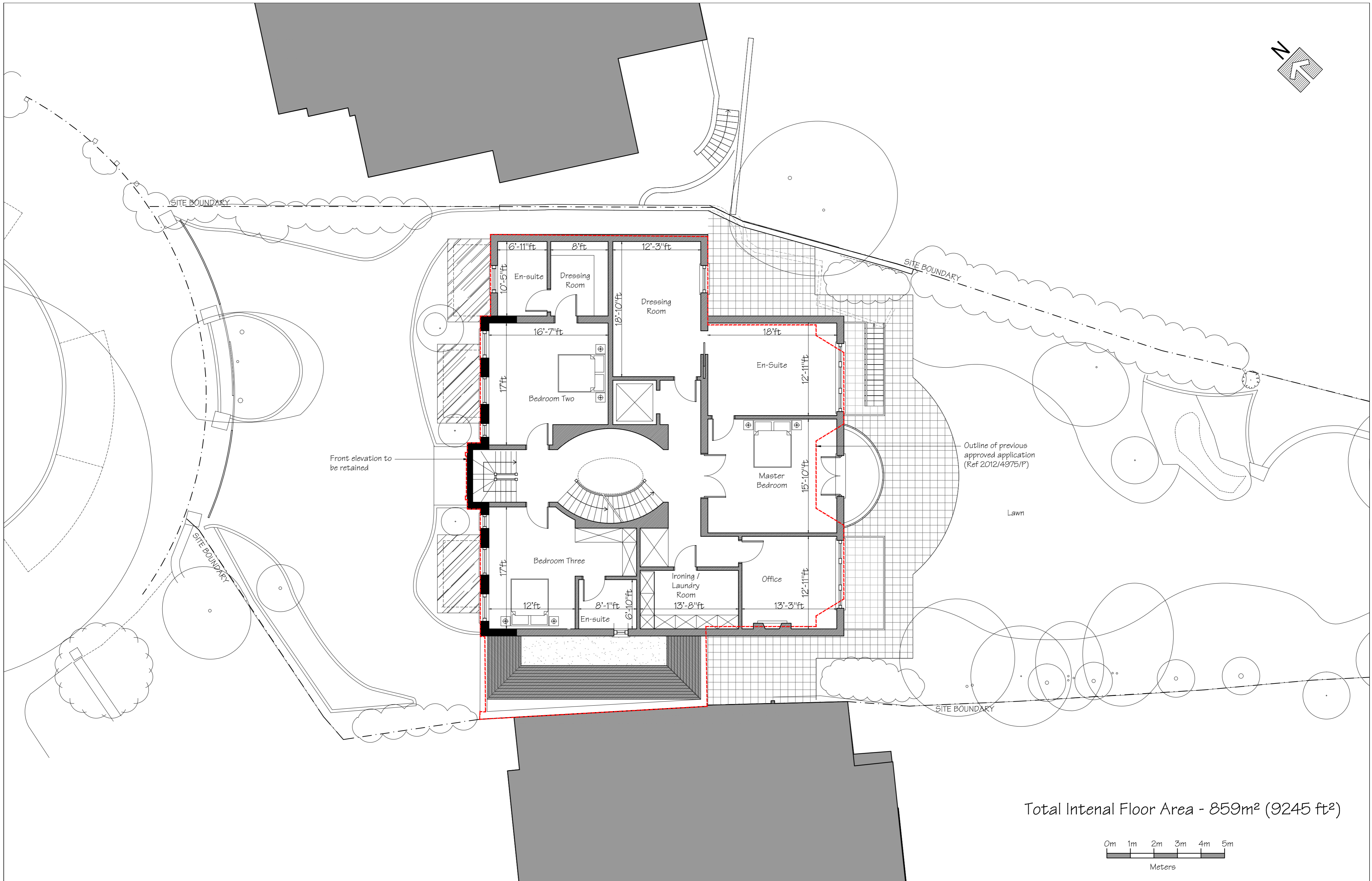
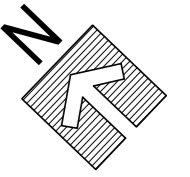
--	--

Drawing Scale = 1:100 @ A2
 1:200 @ A4

Scale	Date	Drawn by	Checked by
1:100 @ A2	22.02.2013	ME	DS
Drawing Title Ground Floor Plan As Proposed			
Project 36 Heath Drive London NW3 7SD			


 Studio 18, Liddell Road
 London N1W 6 2EW
 Phone 020 7624 6680
 Fax 020 7624 6681
 www.DesignSolutionsUK.com

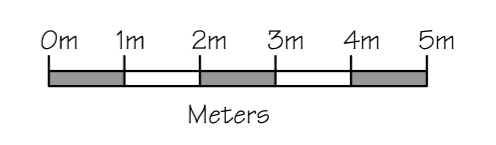
Project no. 2012/0265	Drawing no. 102	Revision 02
--------------------------	--------------------	----------------



Outline of previous approved application (Ref 2012/4975/P)

Lawn

Total Internal Floor Area - 859m² (9245 ft²)



Issued For
General Notes:
THIS DRAWING HAS BEEN PREPARED BY DS DESIGN SOLUTIONS AND THE DATA CONTAINED HEREIN MAY BE USED OR REPRODUCED ONLY WITH DS DESIGN SOLUTIONS' APPROVAL.

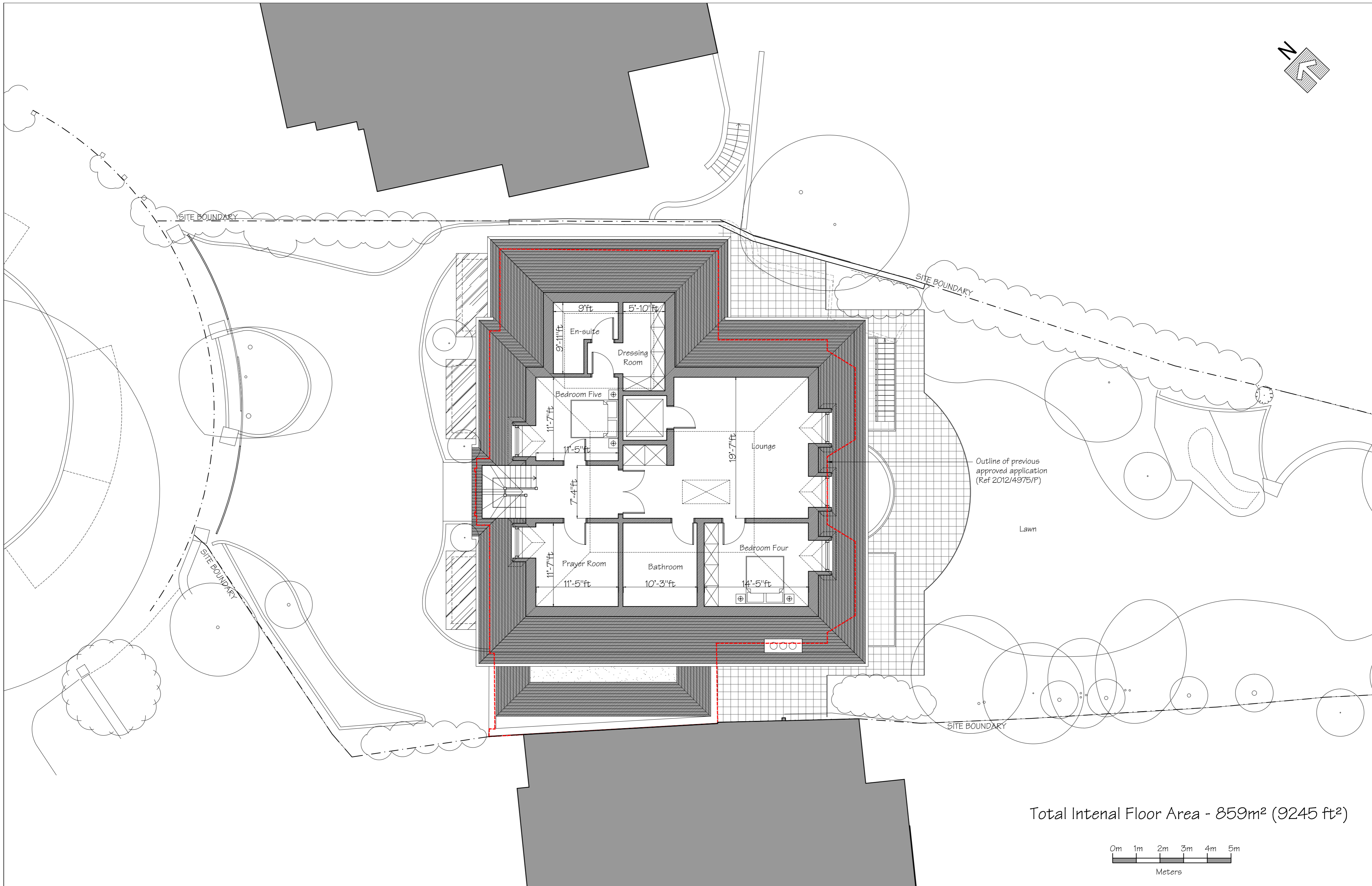
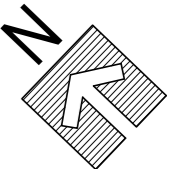
Rev.	Description	Date	Signed	Checked

--	--	--	--	--

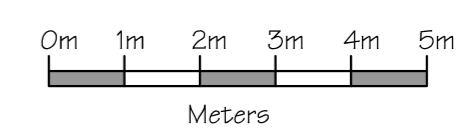
Drawing Scale = 1:100 @ A2
1:200 @ A4

Scale	Date	Drawn by	Checked by
1:100 @ A2	22.02.2013	ME	DS
Drawing Title First Floor Plan As Proposed			
Project 36 Heath Drive London NW3 7SD			

	Studio 18, Liddell Road London N17 6 2EW Phone 020 7624 6680 Fax 020 7624 6681 design.solutions www.DesignSolutionsUK.com	
	Project no. 2012/0265	Drawing no. 103



Total Internal Floor Area - 859m² (9245 ft²)



Issued For

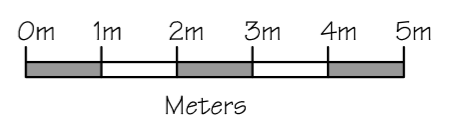
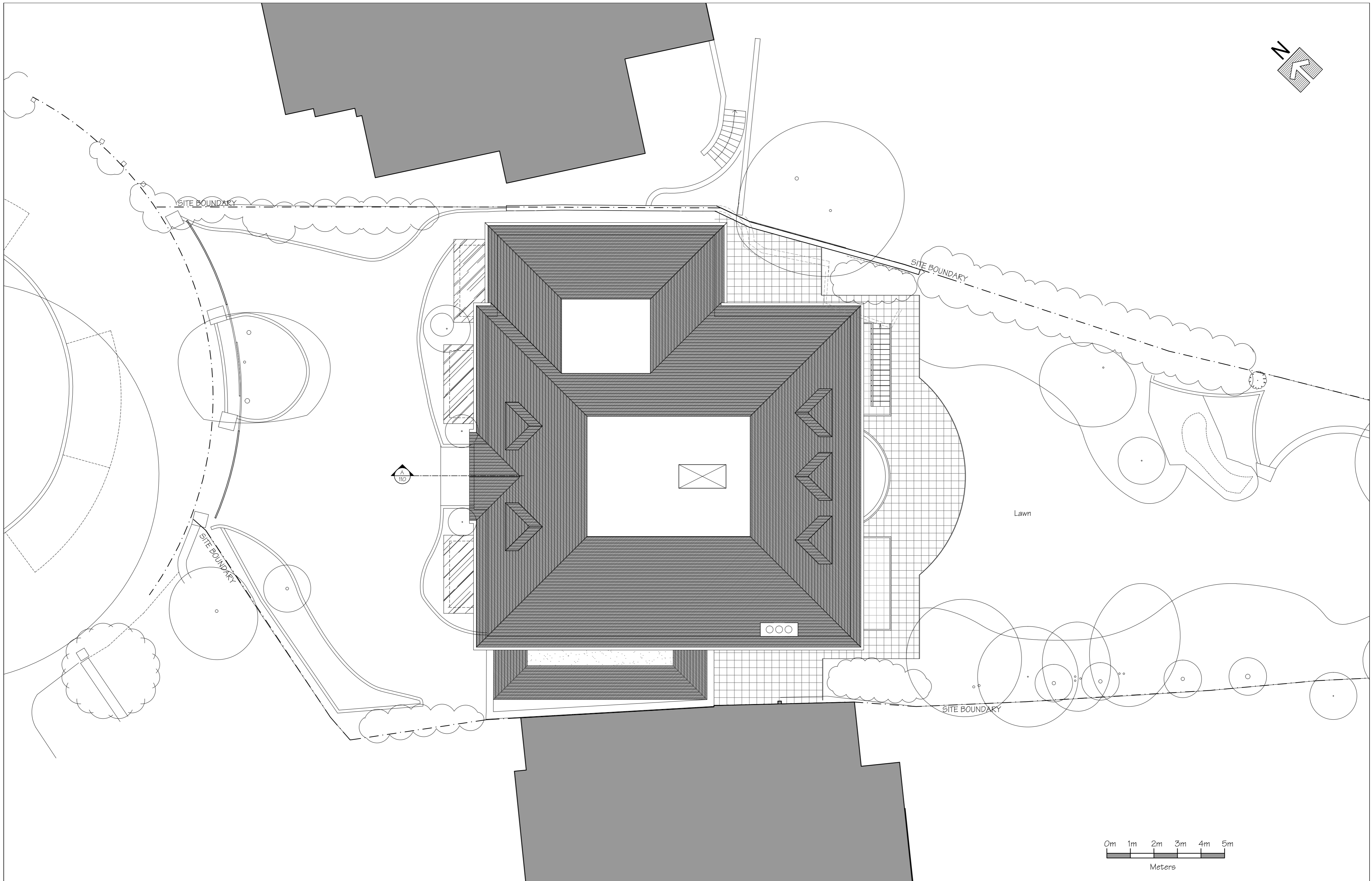
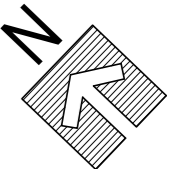
General Notes:
THIS DRAWING HAS BEEN PREPARED BY DS DESIGN SOLUTIONS AND THE DATA CONTAINED HEREIN MAY BE USED OR REPRODUCED ONLY WITH DS DESIGN SOLUTIONS' APPROVAL.

Rev.	Description	Date	Signed	Checked

Drawing Scale = 1:100 @ A2
1:200 @ A4

Scale	Date	Drawn by	Checked by
1:100 @ A2	22.02.2013	ME	DS
Drawing Title Second Floor Plan As Proposed			
Project 36 Heath Drive London NW3 7SD			

	Studio 18, Liddell Road London N14 6 2EW Phone 020 7624 6680 Fax 020 7624 6681	
	www.DesignSolutionsUK.com	
Project no. 2012/0265	Drawing no. 104	Revision 02



Issued For

General Notes:
THIS DRAWING HAS BEEN PREPARED BY DS DESIGN SOLUTIONS AND THE DATA CONTAINED HEREIN MAY BE USED OR REPRODUCED ONLY WITH DS DESIGN SOLUTIONS' APPROVAL.

Rev.	Description	Date	Signed	Checked
01	Proposed rear side extensions removed Rear light well size reduced Rear bay reinstated to match existing	07.11.12	ME	DS

--	--

--	--

Drawing Scale = 1:100 @ A2
1:200 @ A4

Scale	Date	Drawn by	Checked by
1:100 @ A2	04.04.2012	DS	DS
Drawing Title Roof Plan As Proposed			
Project 36 Heath Drive London NW3 7SD			

	Studio 18, Liddell Road London NW6 2EW Phone: 020 7624 6680 Fax: 020 7624 6681 design solutions www.DesignSolutionsUK.com		
	Project no. 2012/0265	Drawing no. 005	Revision 01