



Existing Front Elevation

35 Heath Drive



36 Heath Drive



37 Heath Drive



Proposed Front Elevation

35 Heath Drive



36 Heath Drive



37 Heath Drive

Issued For  
General Notes  
THIS DRAWING HAS BEEN PREPARED BY DS DESIGN SOLUTIONS AND THE DATA CONTAINED HEREIN MAY BE USED OR REPRODUCED ONLY WITH DS DESIGN SOLUTIONS' APPROVAL.

Rev.	Description	Date	Signed	Checked
01	Proposed garage roof altered to match existing. Glass covering to front light wells removed	07.11.12	ME	DS

--	--	--	--	--

--	--	--	--	--

Drawing Scale = 1:100 @ A2  
1:200 @ A4

Meters

Scale	Date	Drawn by	Checked by
1:100 @ A2	21.02.2013	MJ	DS
Drawing Title			
Front Elevation - Existing and Proposed			
Project			
36 Heath Drive London NW3 7SD			

Studio 18, Liddell Road  
London NW6 2EW  
Phone 020 7624 6680  
Fax 020 7624 6681  
www.DesignSolutionsUK.com

Project no.	Drawing no.	Revision
2012/0265	020	00



Existing Rear Elevation

37 Heath Drive

36 Heath Drive

35 Heath Drive



Proposed Rear Elevation

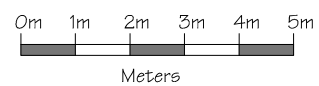
37 Heath Drive

36 Heath Drive

35 Heath Drive

Rev.	Description	Date	Signed	Checked

General Notes:  
THIS DRAWING HAS BEEN PREPARED BY DS DESIGN SOLUTIONS AND THE DATA CONTAINED HEREIN MAY BE USED OR REPRODUCED ONLY WITH DS DESIGN SOLUTIONS' APPROVAL.



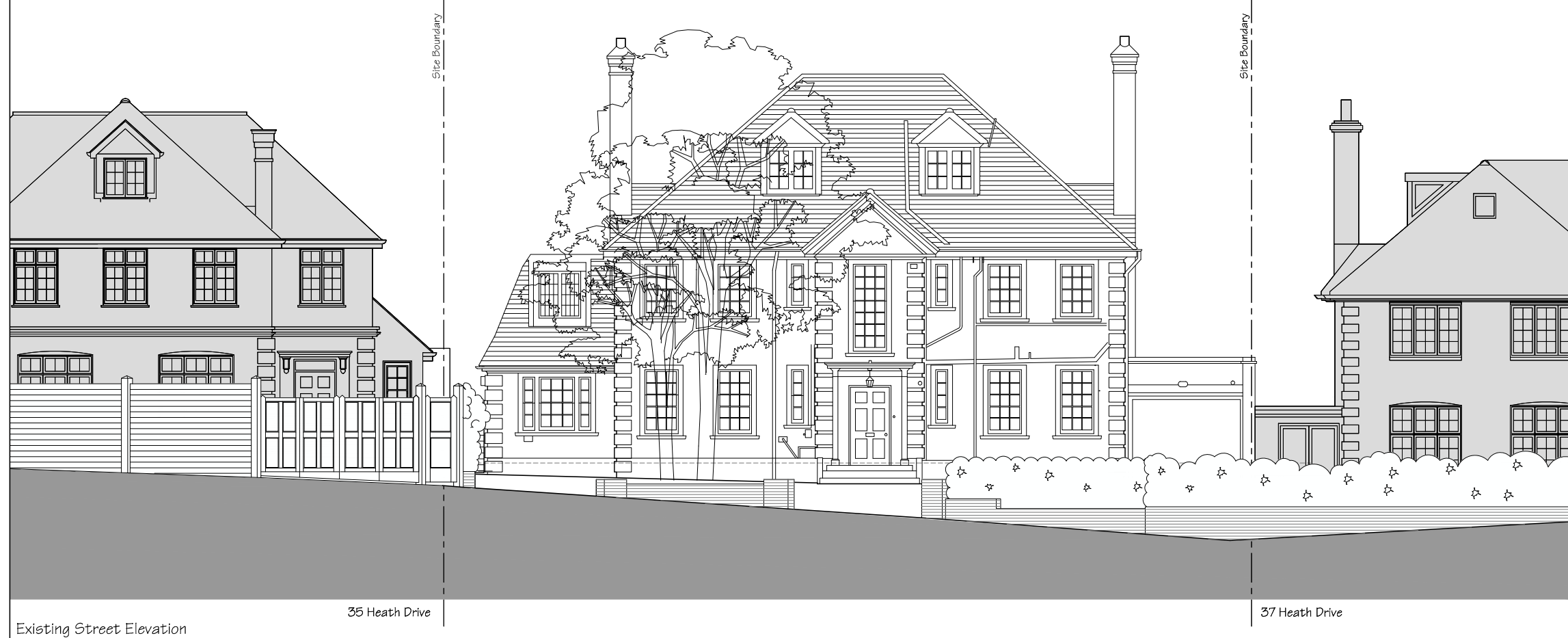
Drawing Scale = 1:100 @ A2  
1:200 @ A4

Scale	Date	Drawn by	Checked by
1:100 @ A2	21.02.2013	MJ	DS

Drawing Title  
Rear Elevation - Existing and Proposed

Project	Project no.	Drawing no.	Revision
36 Heath Drive London NW3 7SD	2012/0265	021	01





Existing Street Elevation



Proposed Street Elevation

Existing timber gates

35 Heath Drive

Proposed metal gates and railing painted black

Proposed brickwork wall to match main house

Existing entrance to 37 Heath Drive

37 Heath Drive

Issued For  
 General Notes  
 THIS DRAWING HAS BEEN PREPARED BY DS DESIGN SOLUTIONS AND THE DATA CONTAINED HEREIN MAY BE USED OR REPRODUCED ONLY WITH DS DESIGN SOLUTIONS' APPROVAL.

Rev.	Description	Date	Signed	Checked

--	--

--	--

Drawing Scale = 1:100 @ A2  
 1:200 @ A4

Meters

Scale	Date	Drawn by	Checked by
1:100 @ A2	21.02.2013	MJ	DS

Drawing Title  
 Street Elevation - Proposed

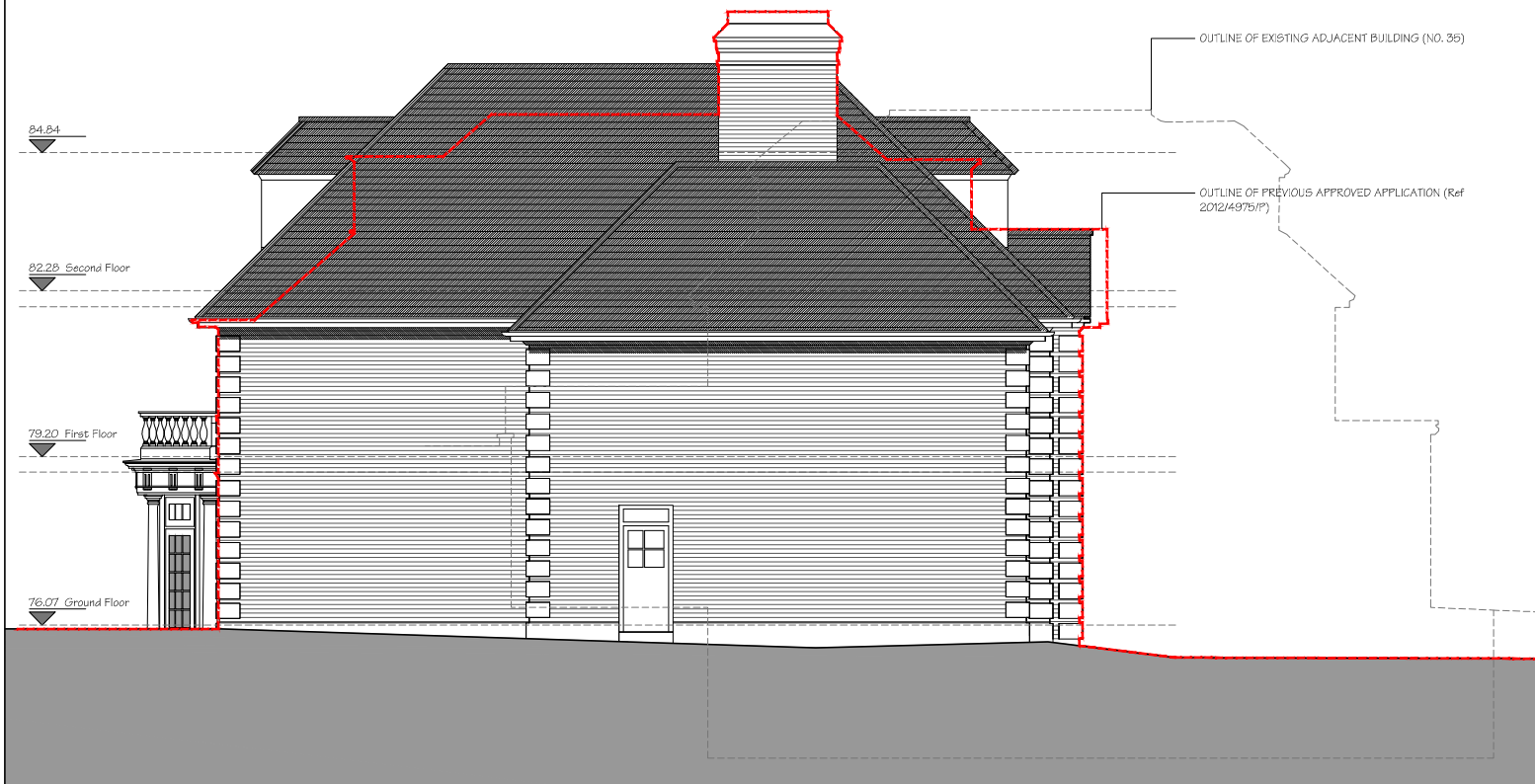
Project	36 Heath Drive London NW3 7SD
---------	----------------------------------

Studio 18, Liddell Road  
 London NW6 2EW  
 Phone 020 7624 6680  
 Fax 020 7624 6681  
 design solutions www.DesignSolutionsUK.com

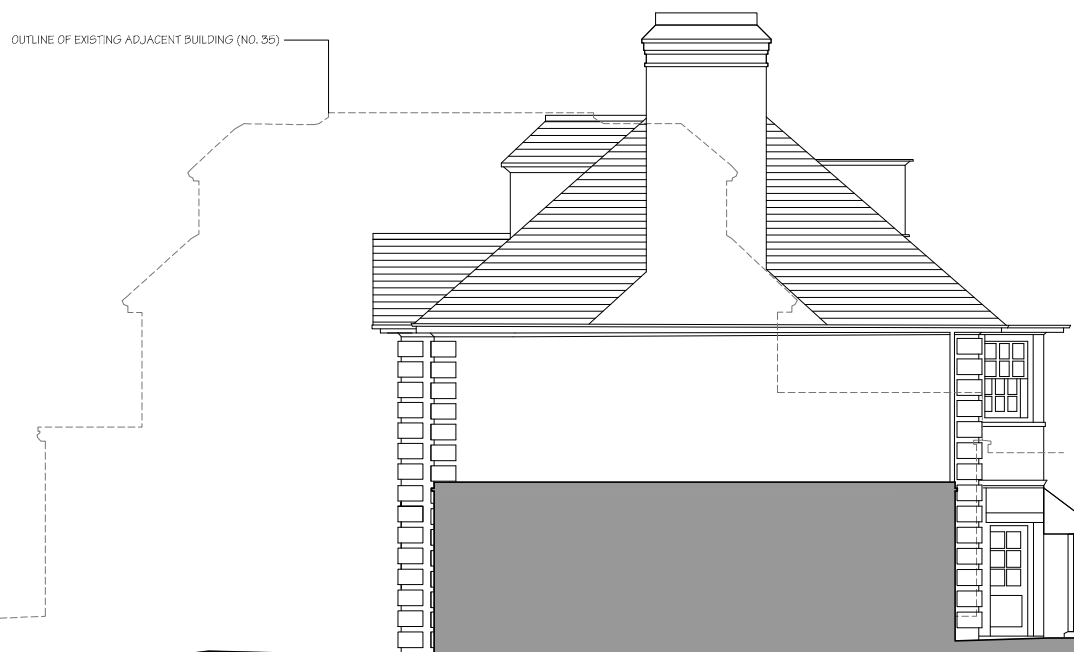
Project no.	2012/0265	Drawing no.	022	Revision	00
-------------	-----------	-------------	-----	----------	----



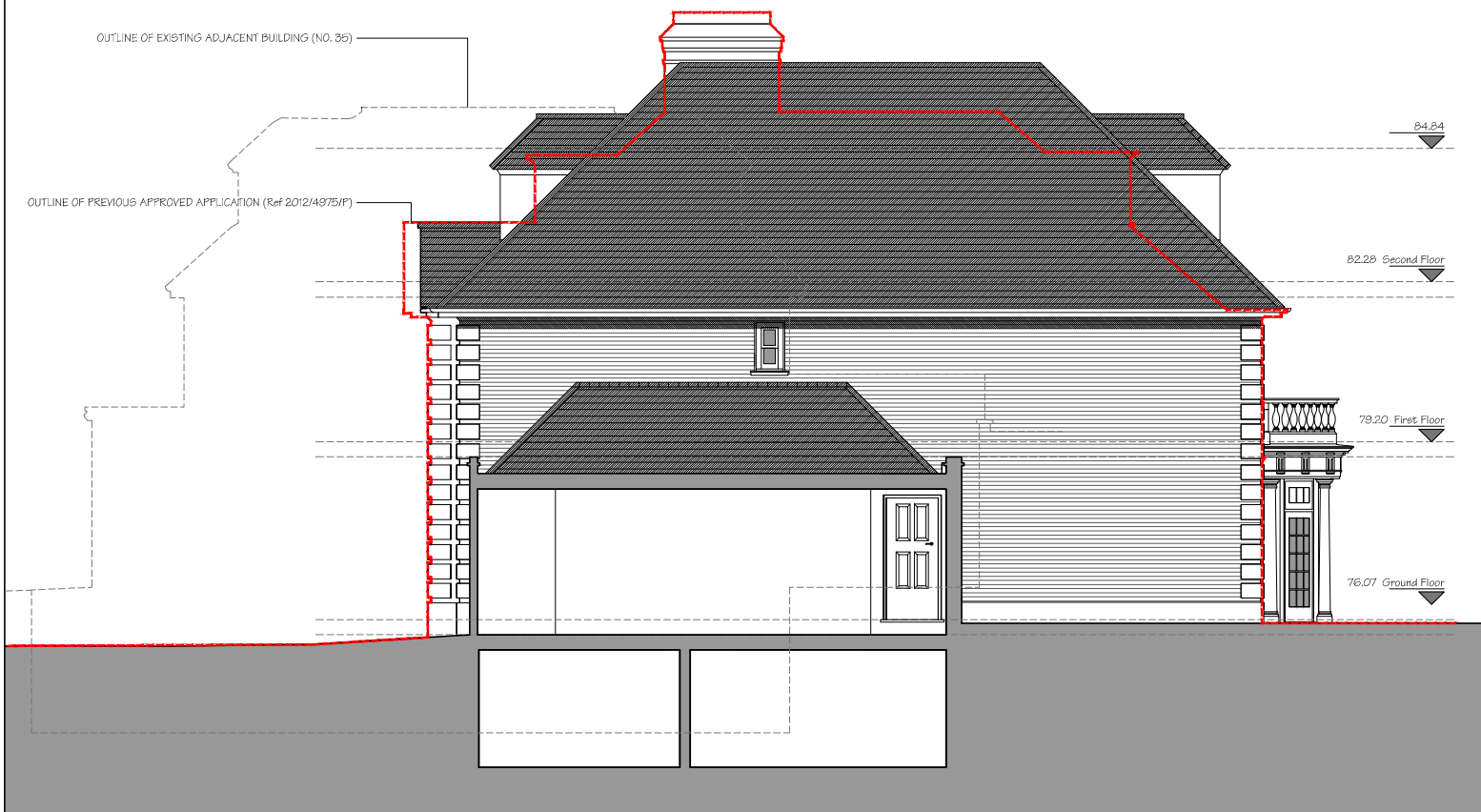
Existing North East Elevation



Proposed North East Elevation



Existing South West Elevation



Proposed South West Elevation

Issued For	Rev.	Description	Date	Signed	Checked

General Notes:  
THIS DRAWING HAS BEEN PREPARED BY DS DESIGN SOLUTIONS AND THE DATA CONTAINED HEREIN MAY BE USED OR REPRODUCED ONLY WITH DS DESIGN SOLUTIONS' APPROVAL.

Drawing Scale = 1:100 @ A2  
1:200 @ A4

0m 1m 2m 3m 4m 5m  
Meters

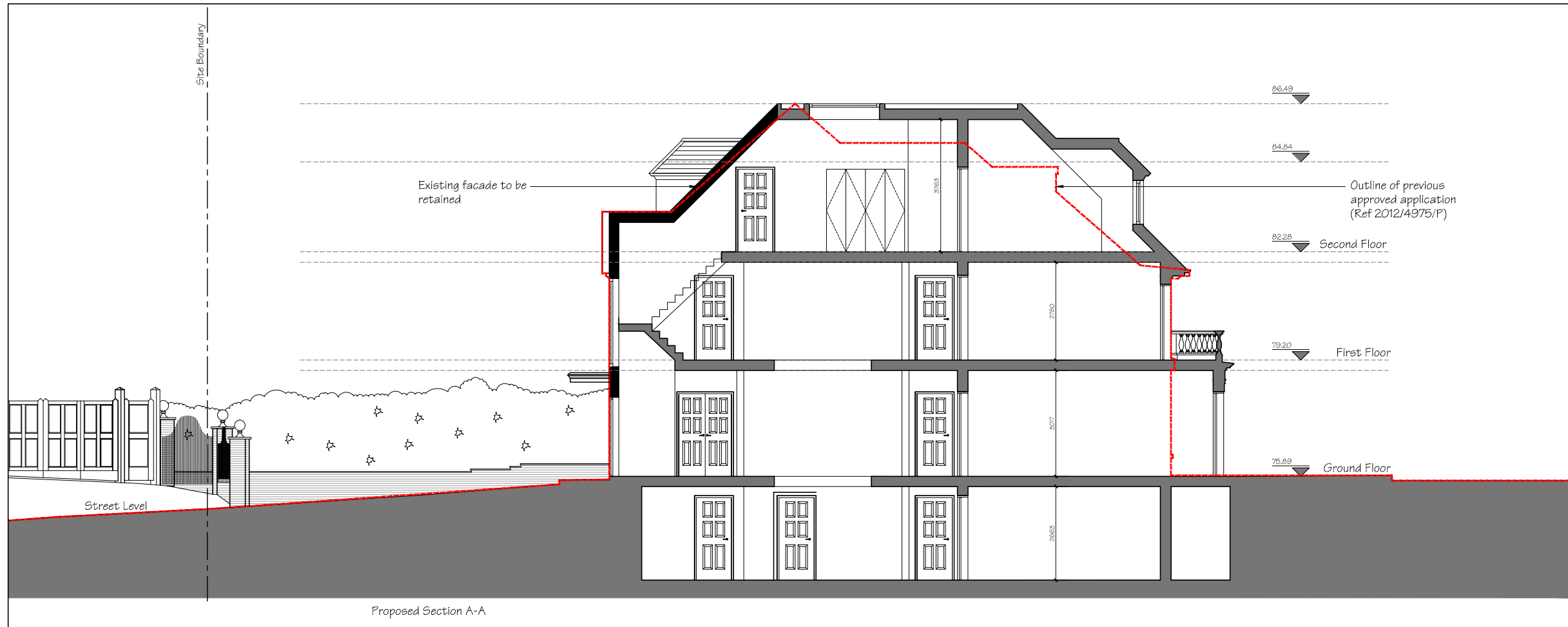
Scale	Date	Drawn by	Checked by
1:100 @ A2	21.02.2013	MJ	DS

Existing and Proposed Side Elevations

Project	36 Heath Drive London NW3 7SD
---------	----------------------------------

Project no.	2012/0265	Drawing no.	022	Revision	01
-------------	-----------	-------------	-----	----------	----

Studio 18, Liddell Road  
London NW6 2EW  
Phone 020 7624 6680  
Fax 020 7624 6681  
design solutions www.DesignSolutionsUK.com



Issued For

General Notes:  
 THIS DRAWING HAS BEEN PREPARED BY DS DESIGN SOLUTIONS AND THE DATA CONTAINED HEREIN MAY BE USED OR REPRODUCED ONLY WITH DS DESIGN SOLUTIONS' APPROVAL.

Rev.	Description	Date	Signed	Checked

--	--

--	--

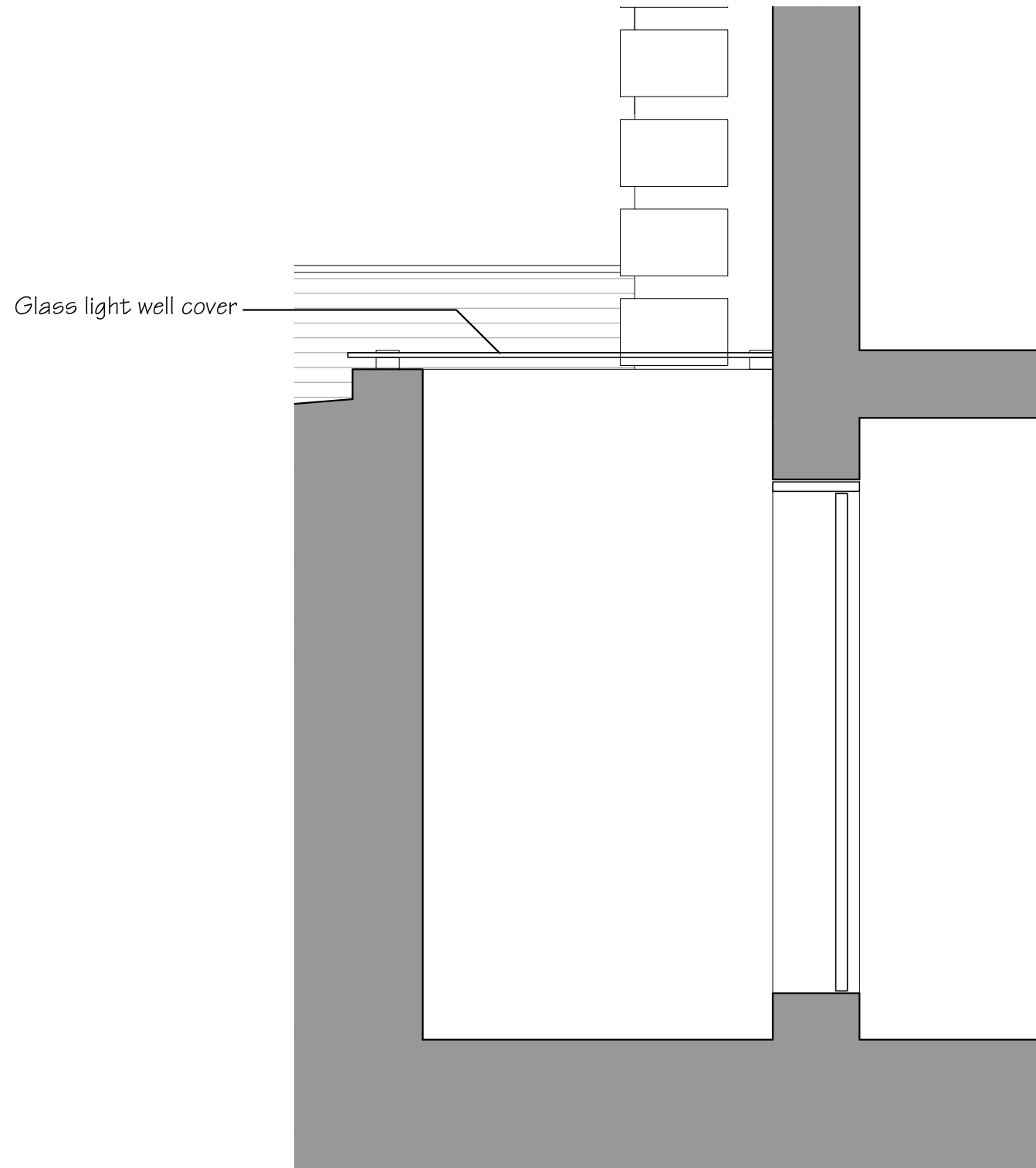
Drawing Scale = 1:100 @ A2  
 1:200 @ A4

Scale	Date	Drawn by	Checked by
1:100 @ A2	21.02.2013	MJ	DS
Drawing Title			
Proposed Section A-A			
Project			
36 Heath Drive London NW3 7SD			

Studio 18, Liddell Road  
 London NW6 2EW  
 Phone 020 7624 6680  
 Fax 020 7624 6681

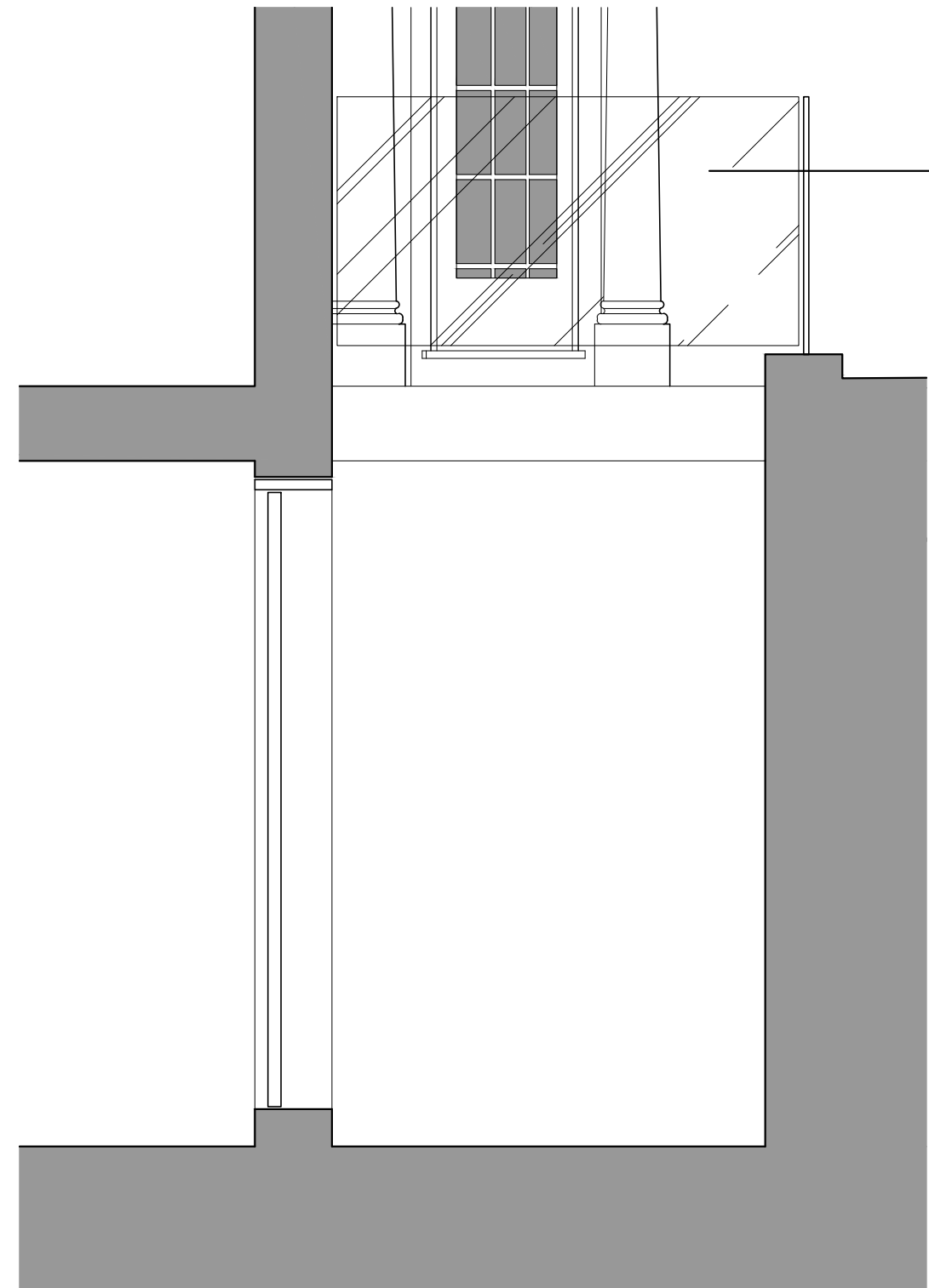
design solutions www.DesignSolutionsUK.com

Project no.	Drawing no.	Revision
2012/0265	024	01



Glass light well cover

Section Through Front Light Well



Glass balustrade around light well

Section Through Rear Light Well

Issued For  
**PLANNING**


General Notes:  
THIS DRAWING HAS BEEN PREPARED BY DS DESIGN SOLUTIONS AND THE DATA CONTAINED HEREIN MAY BE USED OR REPRODUCED ONLY WITH DS DESIGN SOLUTIONS' APPROVAL.

Rev.	Description	Date	Signed	Checked

--

--

Scale 1:25 @ A3	Date 01.07.2013	Drawn by ME	Checked by DS
Drawing Title Sections Through Light Wells			
Project 36 Heath Drive London NW3 7SD			

 design solutions www.DesignSolutionsUK.com	Studio 18, Liddell Road London NW6 2EW Phone 020 7624 6680 Fax 020 7624 6681	
	Project no. 2012/0265	Drawing no. 025