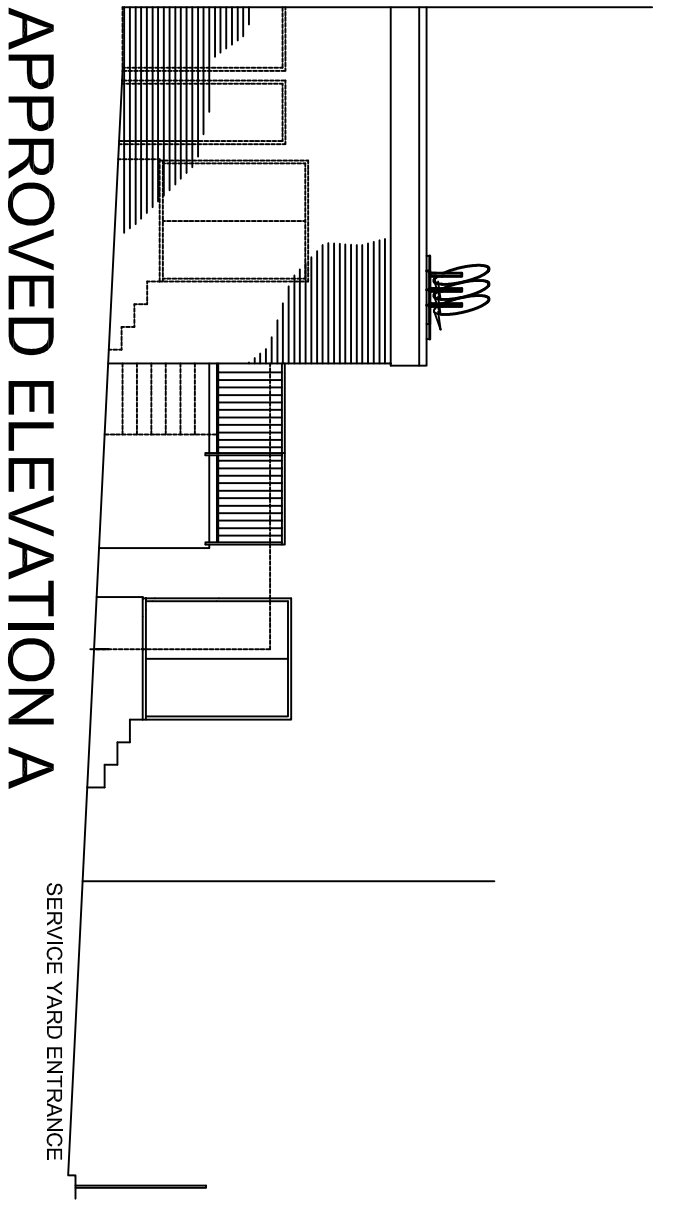
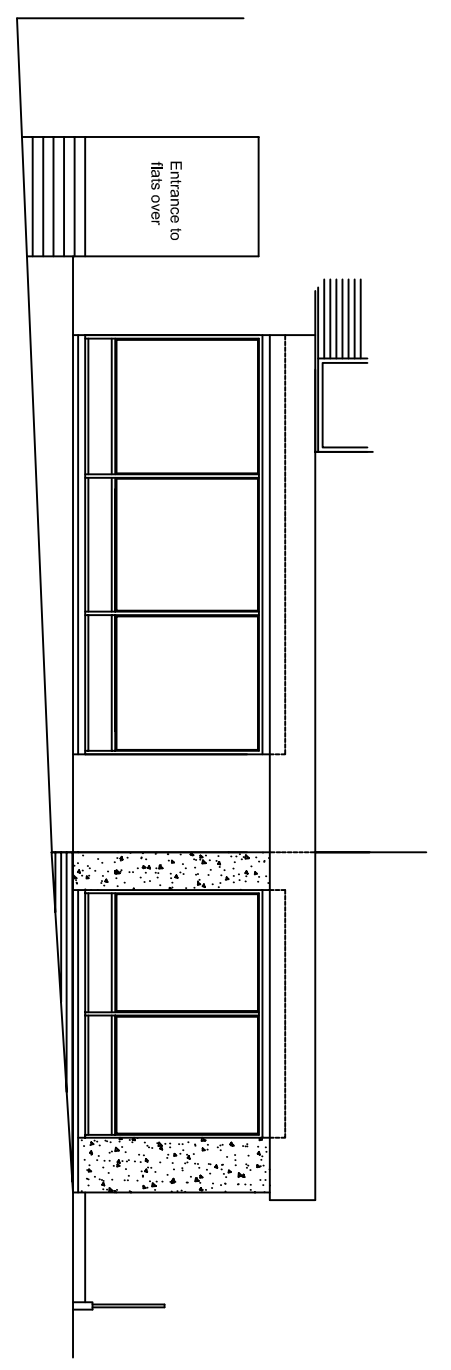
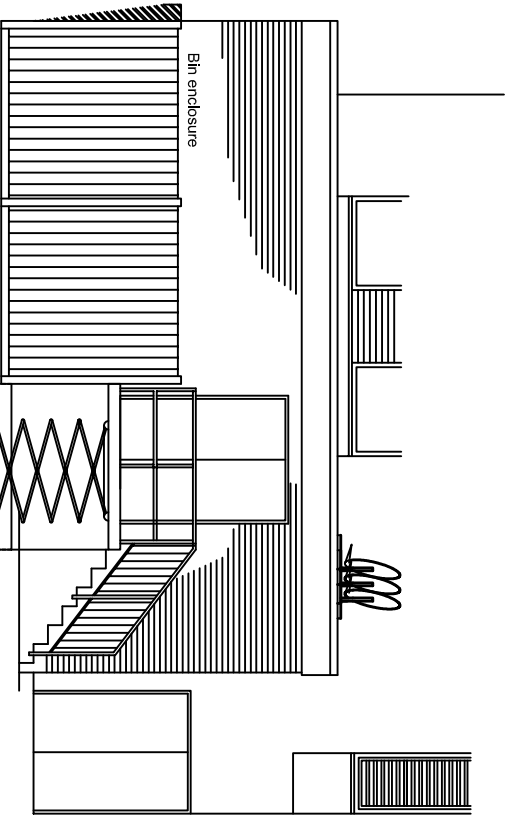


APPROVED SIDE ELEVATION
(UNDER 2012-2631-P)



APPROVED ELEVATION A
(UNDER 2012-2631-P)



APPROVED ELEVATION B
(UNDER 2012-2631-P)

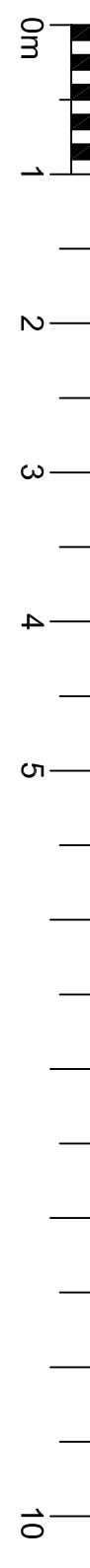
APPROVED GROUND FLOOR PLAN

(UNDER 2012-2631-P)

SCALE 1:100



SCALE 1:50



NB - FRONT EXTENSION PREVIOUSLY APPROVED 2010/4081/P AND REAR EXTENSION APPROVED APPLICATION NO. 2012/2631/P. BOTH APPROVALS HAVE BEEN IMPLEMENTED AS WORK IS UNDERWAY.

© THE CONTENTS OF THIS DRAWING REMAIN THE SOLE PROPERTY OF WELLSFIELD ASSOCIATES AND MUST NOT BE COPIED OR REPRODUCED WITHOUT PRIOR PERMISSION.

FULL SURVEY NOT CARRIED OUT. DRAWING PRODUCED USING INFORMATION SUPPLIED BY THE CLIENT

Wellsfield Associates

80 High Street,
Hodleigh,
Essex.
SS7 2PB
Tel: 01702 551123
Fax: 01702 558530
m@wellsfieldassociates.co.uk

Project
**PROPOSED RETAIL UNIT
17-23 LOWER MERTON RISE
LONDON
NW3 3RA**

Approved Plan & Elevations
PLANT APP (UNDER 2012-2631-P)

date **MAY 13** drawn **CJJ**

scale **1:50, 1:100 @ A1** drg. no. **1996.08a**