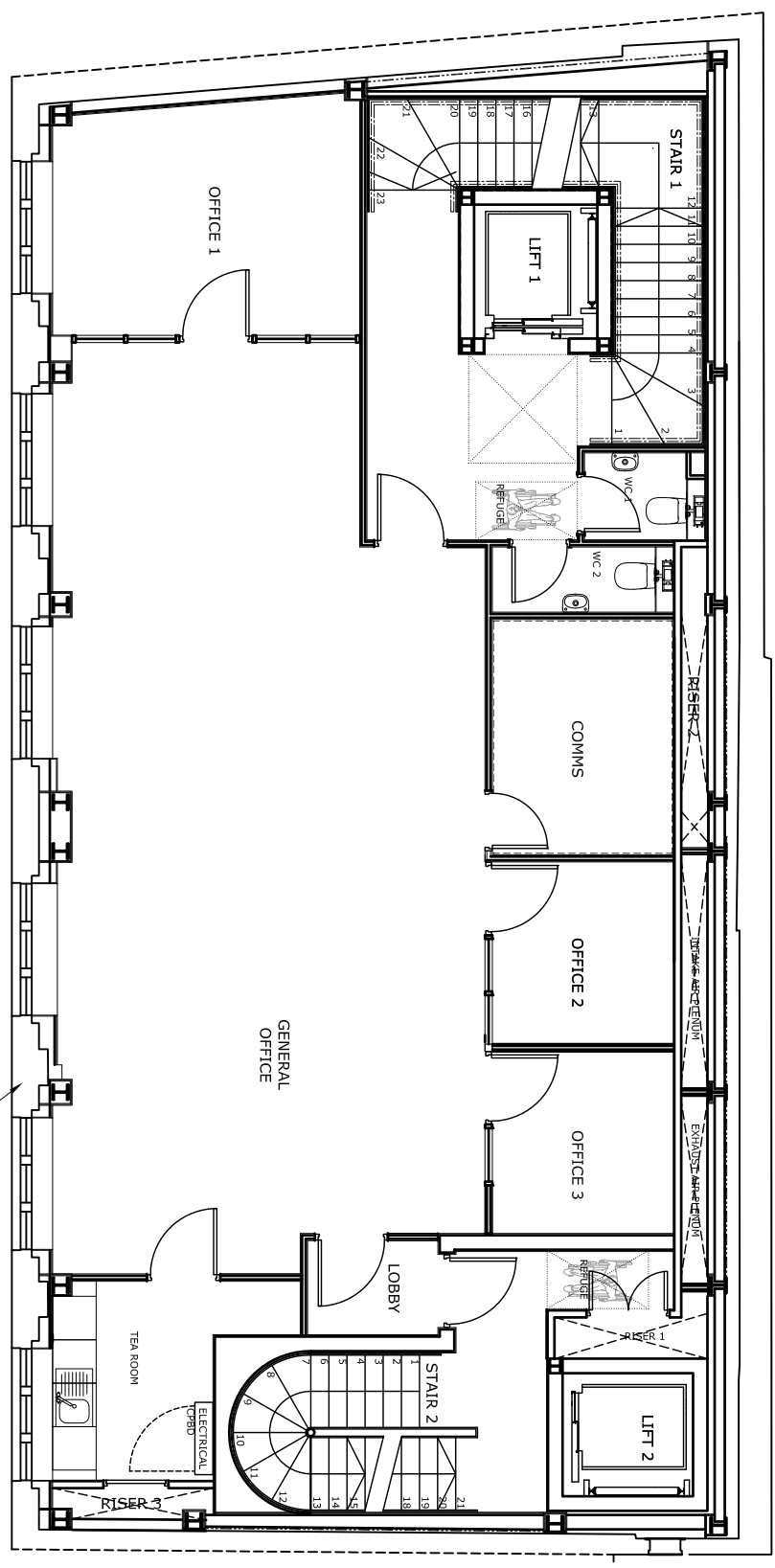


RESPONSIBILITY IS NOT ACCEPTED FOR ERRORS MADE BY OTHERS IN SCALING FROM THIS DRAWING. CONTRACTORS MUST CHECK ALL DIMENSIONS ON SITE AND MUST BE RESPONSIBLE FOR ANY DISCREPANCIES BETWEEN DIMENSIONS ON THIS DRAWING IS COPYRIGHT.

Rev.	Date	Includes
P1	24.01.11	Preliminary Issue
P2	04.02.11	General amendments
P3	09.02.11	Furniture added and walls repositioned. Storage walls added.
P4	11.03.11	Furniture removed. Planning notes added
P5	01.09.11	Blue text removed
P6	05.08.13	Planning Submission Issue Blank window and louvers omitted at second floor level

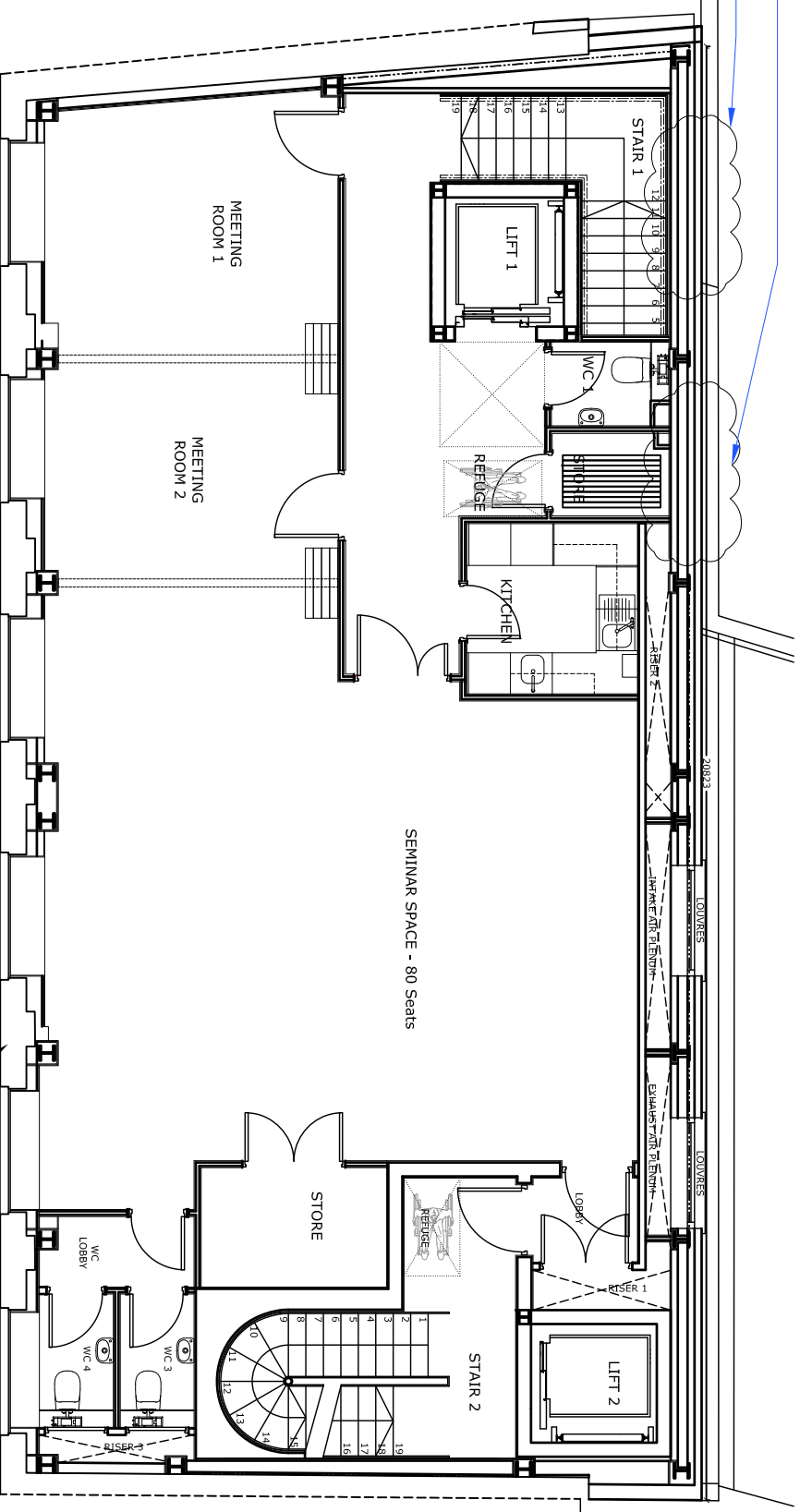


FIRST FLOOR

Use Class B1

Gross internal area : 175.30 m²

EXISTING FACADE TO BE RETAINED AND THERMALLY LINED



SECOND FLOOR

Use Class B1

Gross internal area : 174.79 m²

EXISTING FACADE TO BE RETAINED AND THERMALLY LINED

Louvre removed
Blank window removed

PLANNING

Nash Partnership

Somerset Coalhouse
28a Sydney Buildings
Baz 6BZ
BA2 6BZ

Telephone 01228 442424
Fax 01228 442424
Email info@nashpartnership.com

Drawn	WJ	Proj Manager	RL	Scale	1:100@A3	Date first created	24.01.11
DRAWING No.	10100(L)101		REVISION	P6			

PROJECT
Saffron Hill

TITLE
First Floor and Second Floor