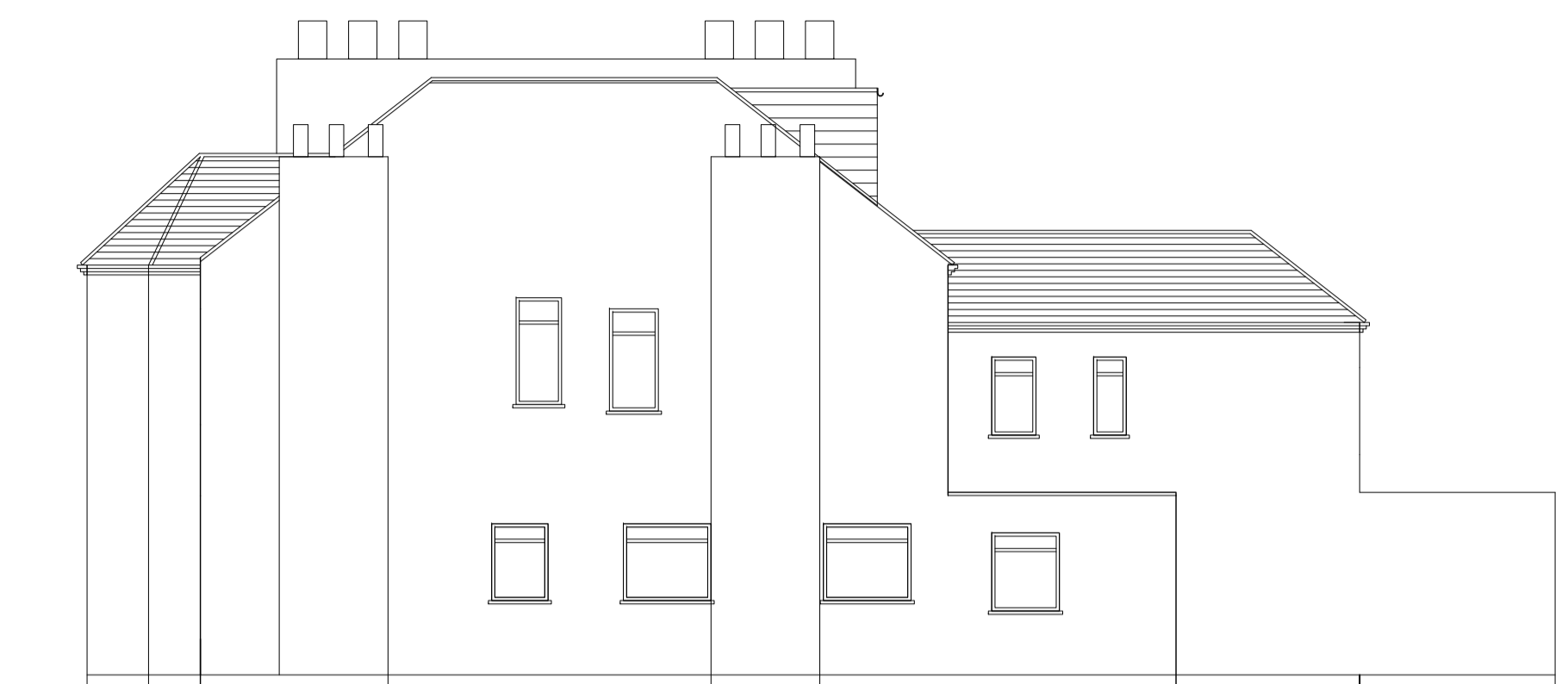
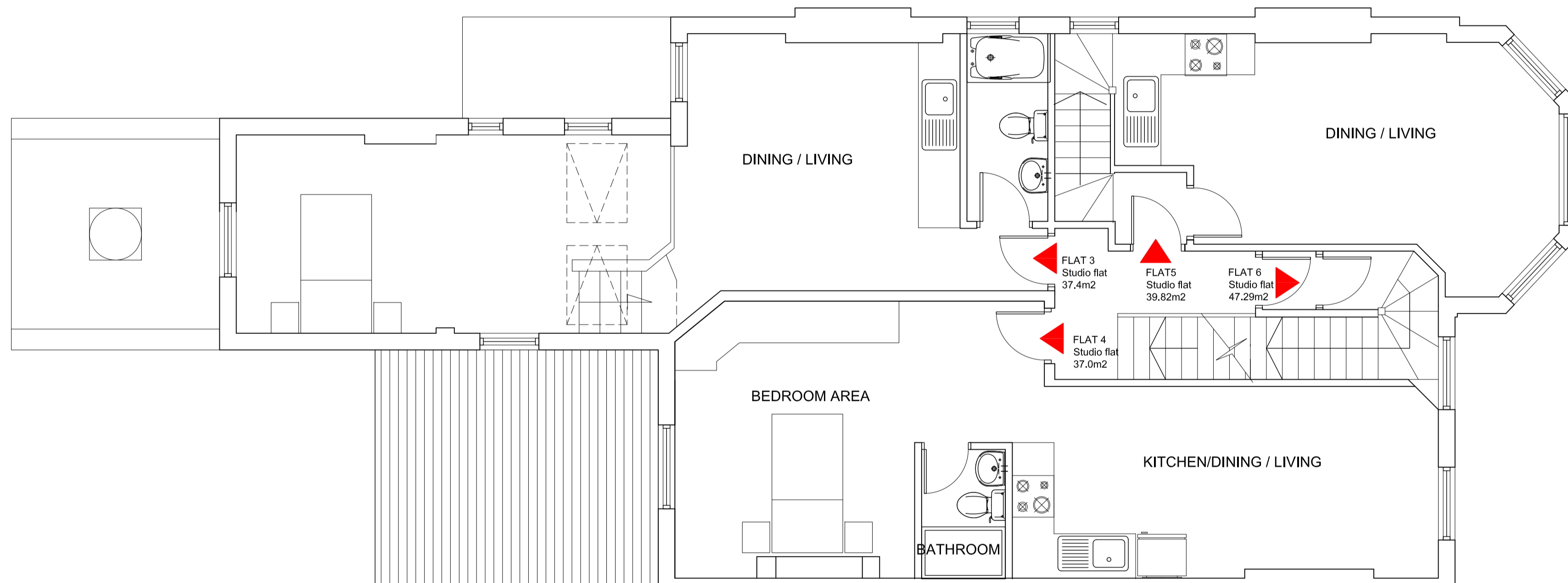


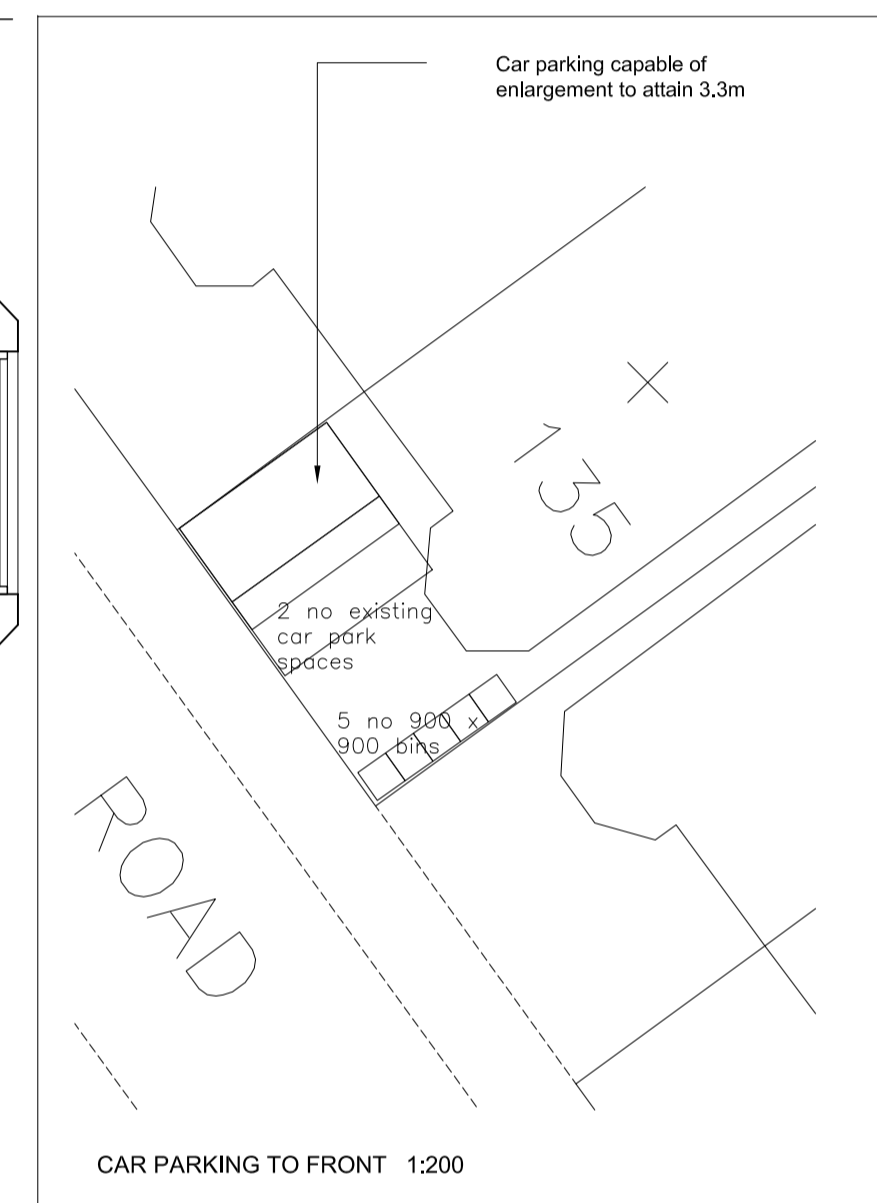
SECOND FLOOR PLAN



SIDE ELEVATION



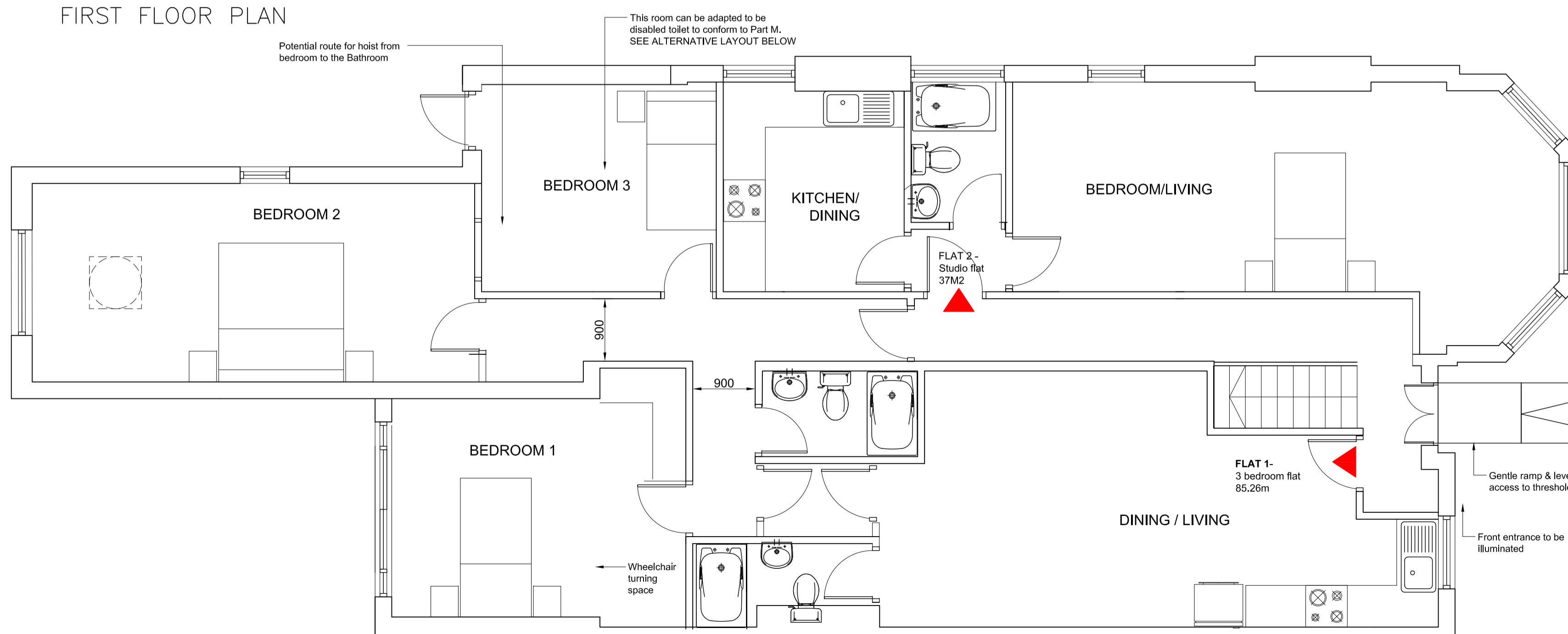
FIRST FLOOR PLAN



CAR PARKING TO FRONT 1:200

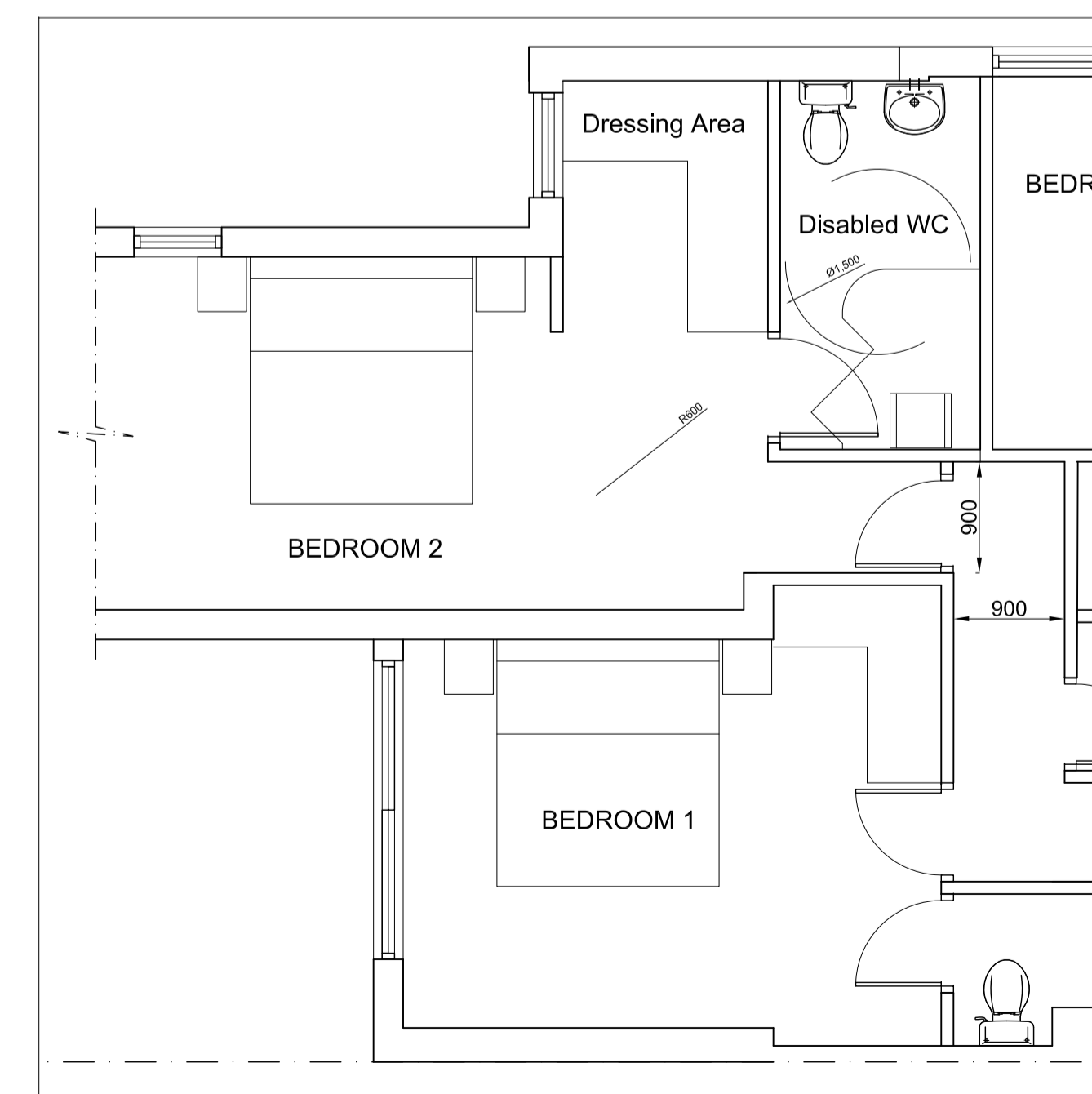
GENERAL NOTES.

1. DOORWAYS & HALLWAYS: TO CONFORM TO PART M. EXCEPT THAT WHEN THE APPROACH IS NOT HEAD ON AND THE HALLWAY WIDTH IS 900mm, THE CLEAR OPENING WIDTH SHOULD BE 900mm.
2. SWITCHES, SOCKETS, VENTILATION AND SERVICE CONTROLS SHOULD BE AT A HEIGHT USABLE BY ALL 9 BETWEEN 450 AND 1200mm FROM THE FLOOR.



GROUND FLOOR PLAN

1:50



PART GROUND FLOOR PLAN; ALTERNATIVE ARRANGEMENT FOR FUTURE ADAPTATION TO A DISABLED WC LINKED TO A BEDROOM 1:50.

Rev K 24-07-13 Flat layouts revised
 Rev J 18-07-13 Flat layouts revised
 Rev F 11-07-13 Drawing revised to comply with Lifetime homes standards.

STUDIO 136 ARCHITECTS

The Studio, 6 The Broadway, Wembley, Middlesex HA9 8JT
 Tel/Fax 020 8907 7131 E:mail: info@studio136.co.uk

Project
 ALTERATIONS TO
 135 FORDWYCH ROAD
 LONDON
 NW2

Client
 GEORGE CHERCHIAN
 12 CRICKLEWOOD BROADWAY
 LONDON
 NW2 3HD

Drawing Title
 PROPOSED PLANS AND ELEVATIONS
 CONVERSION OF DWELLING INTO FLATS

Scale 1:50/1:100 @ A1	Drawn M/D	Checked	Authorised
	JULY 2008		

Drawing Number ST-13-135FR-02	Rev M
----------------------------------	----------