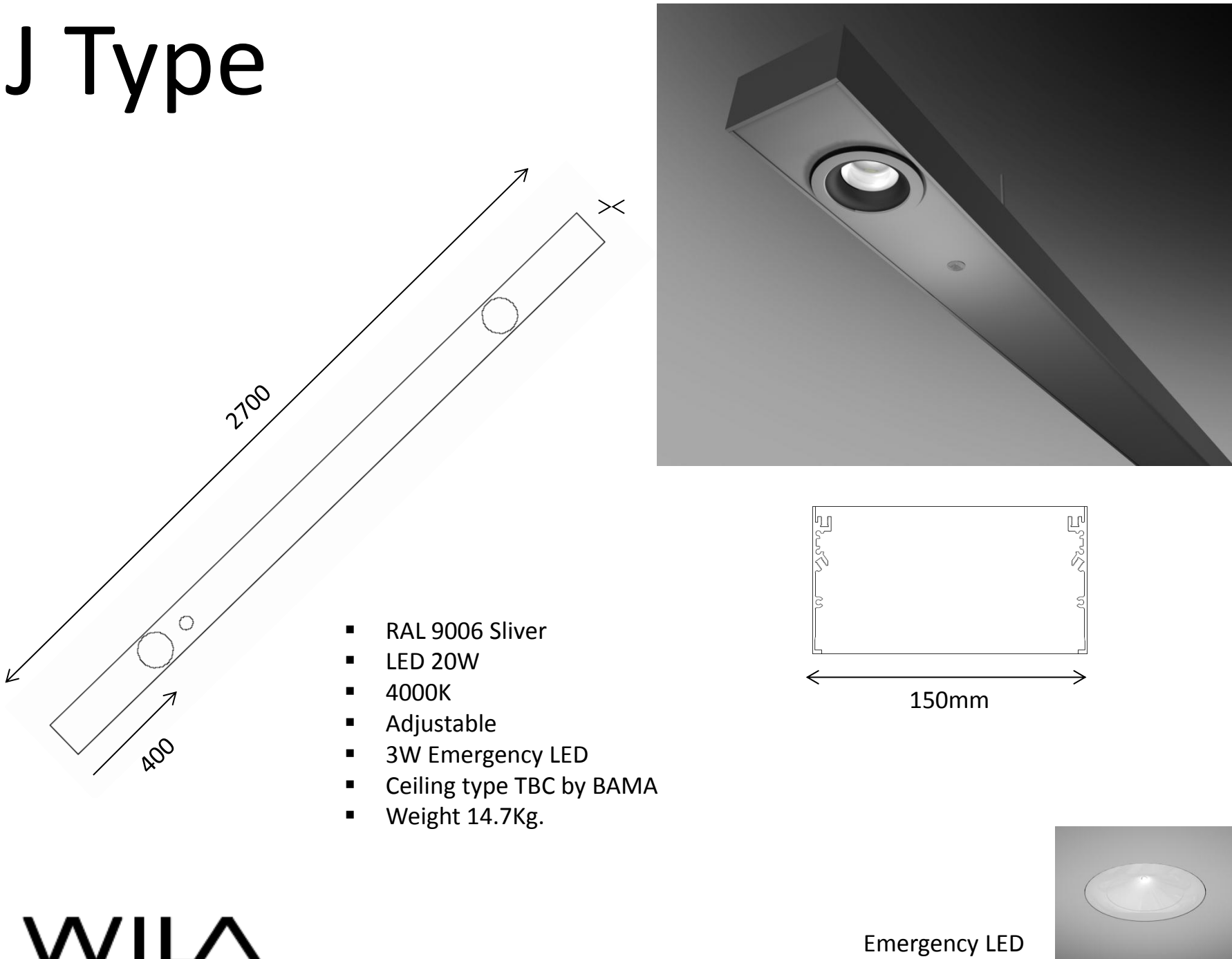


Project Title: Kings Cross – B4		submission no: TSE-010 Rev A
Contract No: SE 4112		
To: Marc Potts/Stuart Carroll		Company: BAM Design
Approval of the following equipment is required:		
Equipment: Luminaires		
Manufacturer: Wila - Schmitz		
Description: J, K and Z Type		
Specification References: Electrical Services Particular Specification A.7.0 and Lighting Schedule No 10		
Equipment specifying schedule.	Yes	
Manufacturer's quotation.	No	
Manufacturer's details.	Yes	
Design check calculations.	No	
Certified performance levels.	Yes	
Builderswork requirements.	No	
Assembly and installation details.	Yes	
Operation and maintenance details.	No	
List of recommended spares.	No	
Electrical requirements for equipment: None		
Planned site delivery: May 2013		
Issued by: D Moran		Date: 20-02-2013
BAM Construction Ltd.		
Please return comments by: 06-03-13 to achieve construction delivery dates.		

To be completed and returned by Consultant Design Engineer	
Technical submission is ** approved / approved with comments / not approved. (**delete as appropriate)	
Returned by:	Company:
Signature:	Date:

J Type



- RAL 9006 Silver
- LED 20W
- 4000K
- Adjustable
- 3W Emergency LED
- Ceiling type TBC by BAMA
- Weight 14.7Kg.

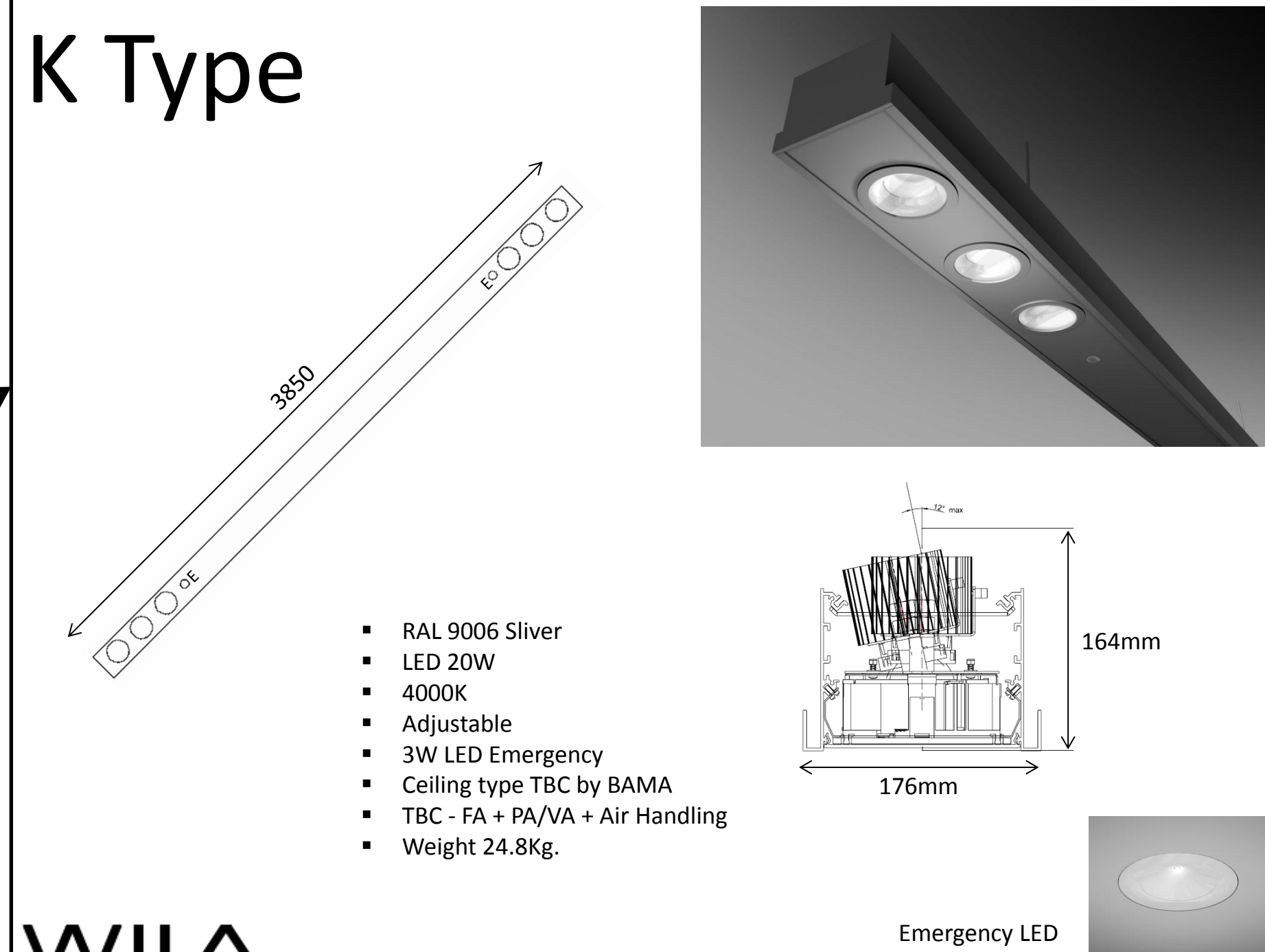
WILA

Emergency LED

Kings Cross Building 4



K Type

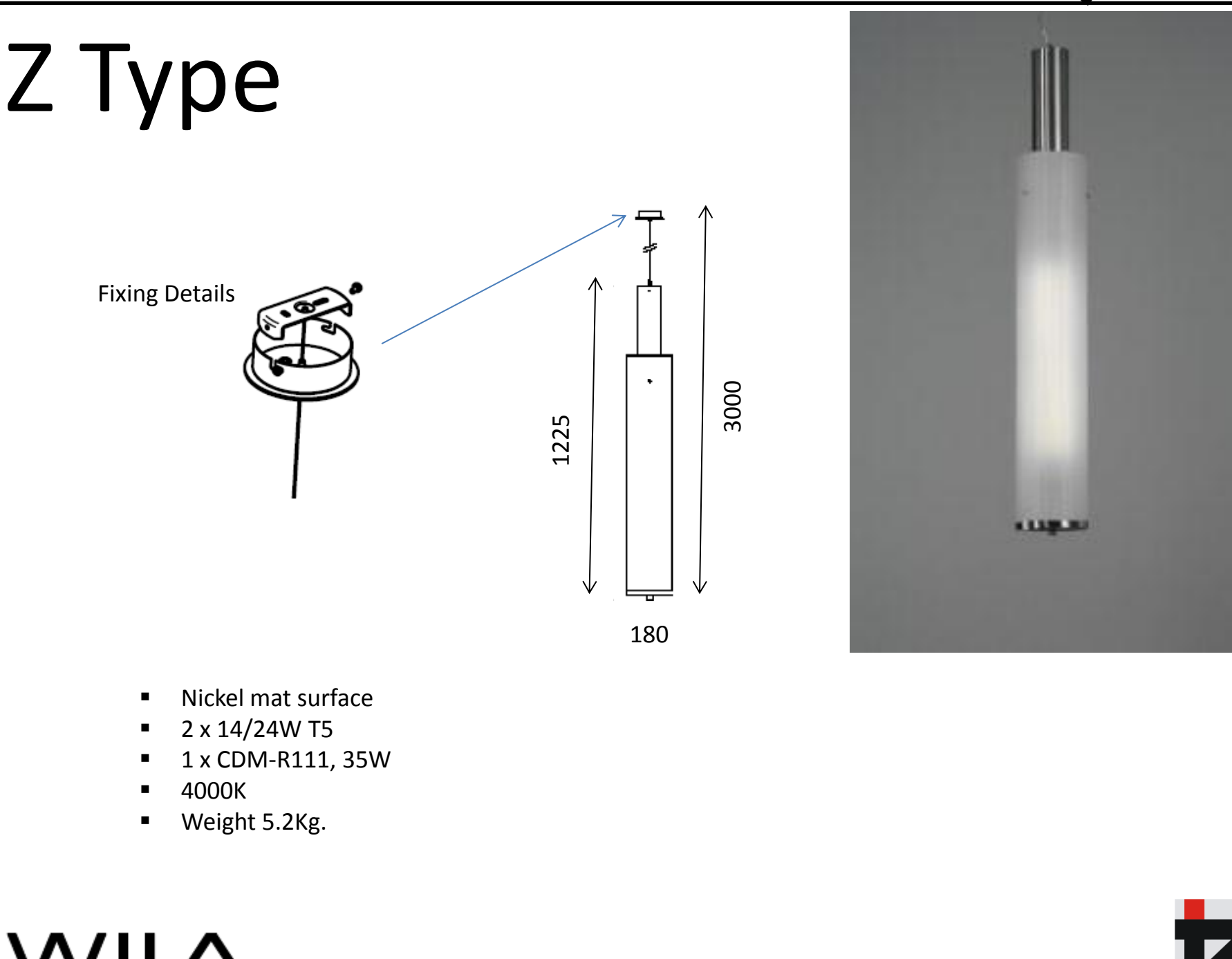


- RAL 9006 Silver
- LED 20W
- 4000K
- Adjustable
- 3W LED Emergency
- Ceiling type TBC by BAMA
- TBC - FA + PA/VA + Air Handling
- Weight 24.8Kg.

WILA

Emergency LED

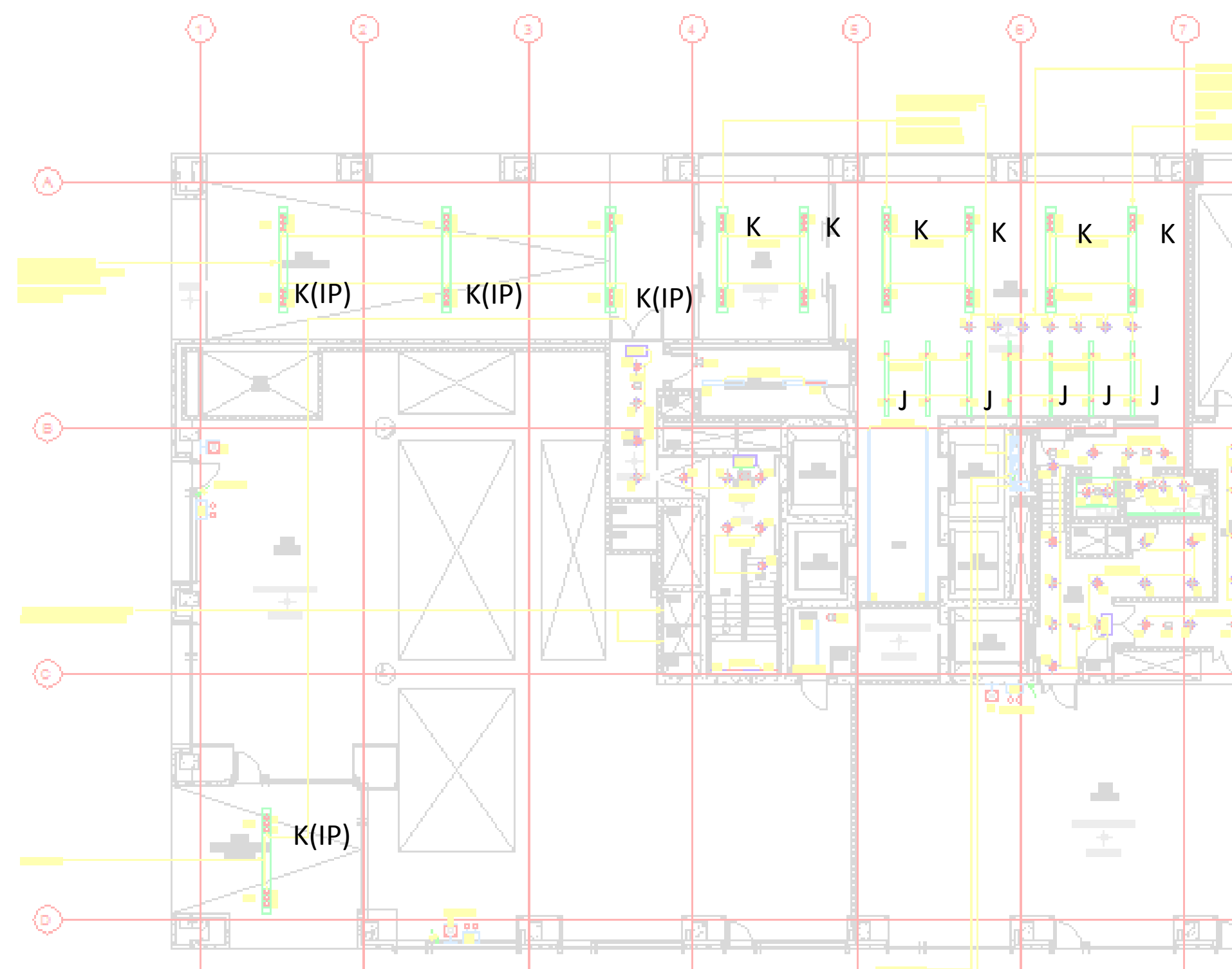
Z Type



Fixing Details

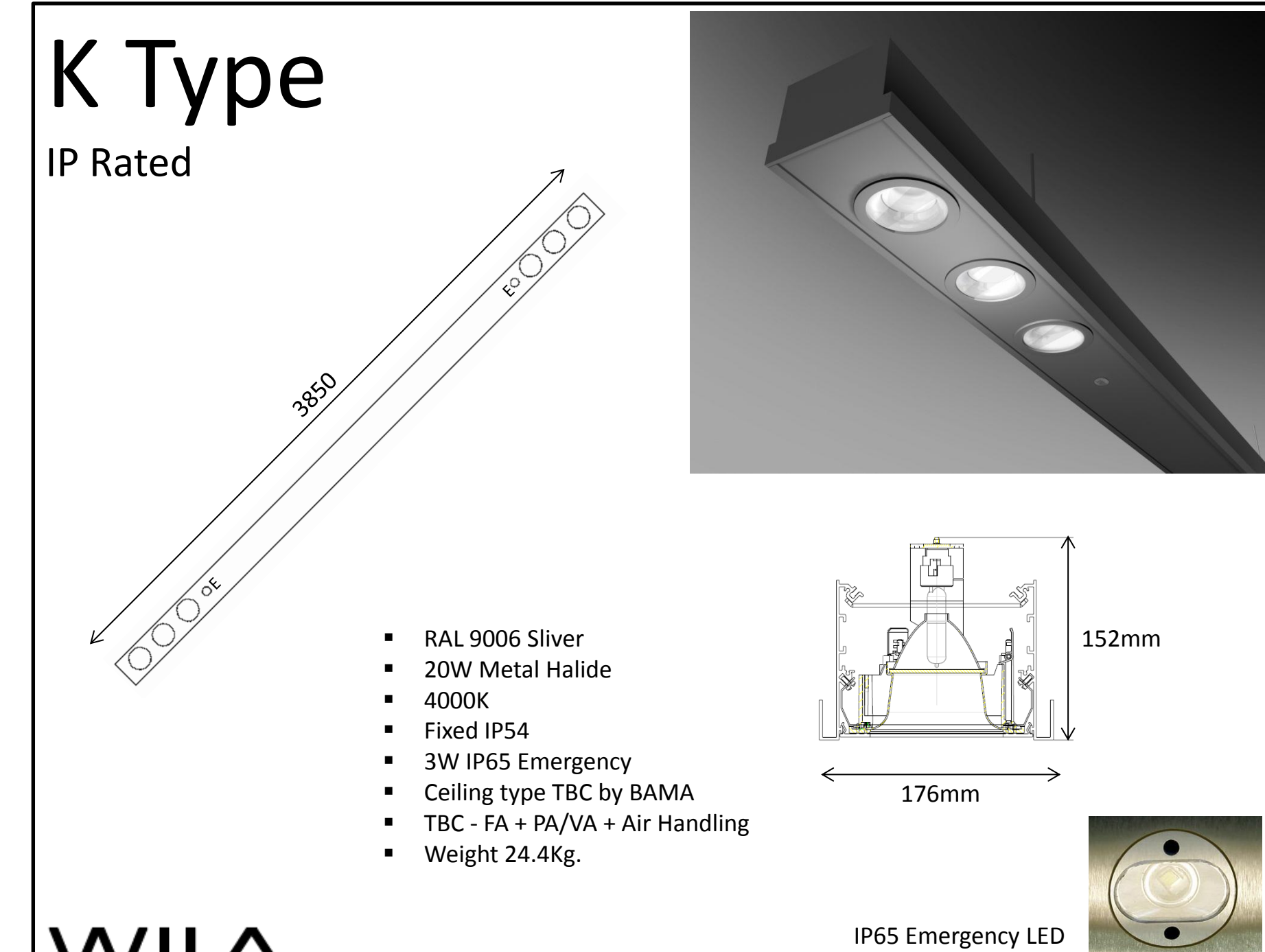
- Nickel mat surface
- 2 x 14/24W T5
- 1 x CDM-R111, 35W
- 4000K
- Weight 5.2Kg.

WILA



K Type

IP Rated



- RAL 9006 Silver
- 20W Metal Halide
- 4000K
- Fixed IP54
- 3W IP65 Emergency
- Ceiling type TBC by BAMA
- TBC - FA + PA/VA + Air Handling
- Weight 24.4Kg.

WILA

IP65 Emergency LED

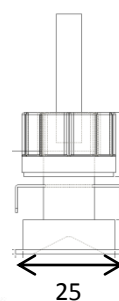
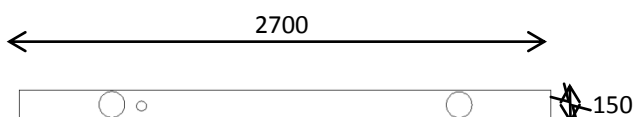
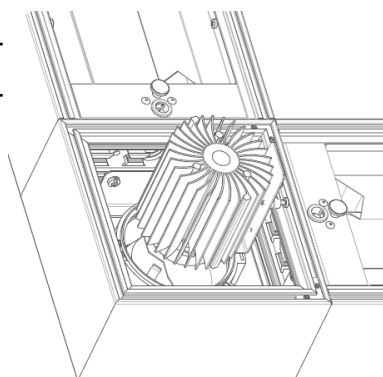
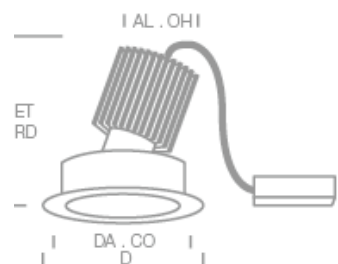
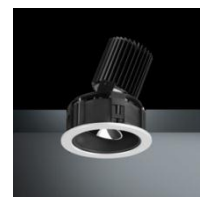
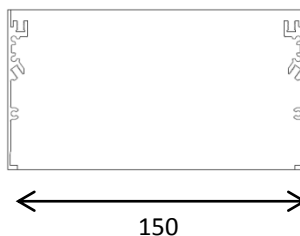
Ref J / JE

Linic® 150 with E Connect® Nero Accent adjustable

Extruded aluminium profile c/w 1 x 20W adjustable LED spots at each end and 1x3W LED emergency finished polished silver with aluminium cover all finished black, nominal dimensions 2700 x 150mm. **Ceiling type to be confirmed at time of order.**



Product Code	WDP28002200ALED
Lamp Type	2x20W LED module
Lamp Colour	4000K
Driver	Static
Ceiling cut out width	152mm
Ceiling cut out length	2702mm
Recess depth	150mm
Finish	Silver RAL9006
Weight	14.7Kg



DS0705
ISSUE DATE 12/02/2013



Ref K(d) – Qty 4 - Outside

Recessed WILA Profile

Recessed WILA continuous extruded aluminium profile with side flange to support SAS330 ceiling tile for lighting & services using T5, HIT, CFL and low voltage.

Profile with 2x Triple 20W R10 High pressure discharge downlights (IP54) at either end and 3W 3hr integral Emergency downlight (IP65).
Preparation for Smoke Detector & PA/VA.

Nominal dimensions 3850mm long, 176mm wide and 152mm deep. **Ceiling type to be confirmed at time of order.**

Product number WP3850620FHIT23EM

Lamp Type Powerball 6 x 20W
2 x 3W LED

Lamp Colour 4000K

Lamp Holder G8.5

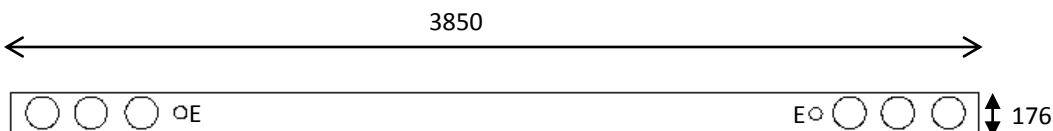
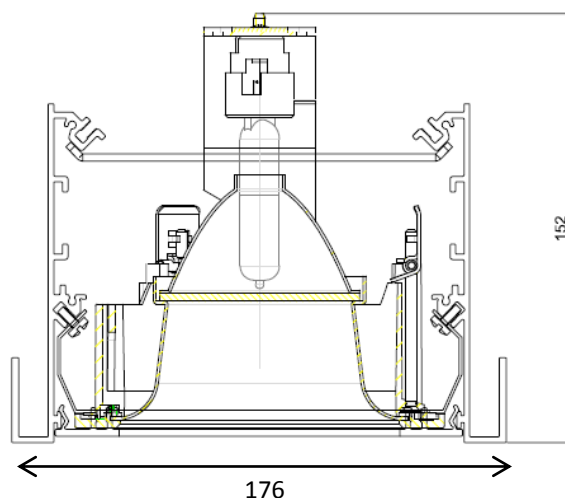
Control Non Dim

Construction Extruded aluminium

Finish Silver RAL9006

Suspension M6 threaded Rod
(by others)

Weight 24.4 Kg



DS0717
ISSUE DATE 12/02/2013



Ref K(b) – Qty 6

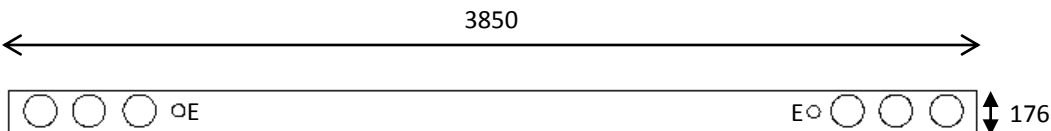
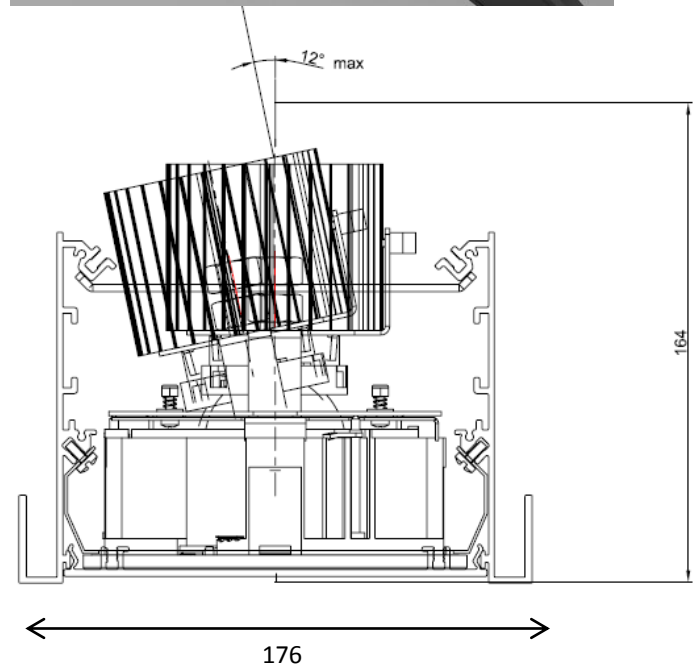
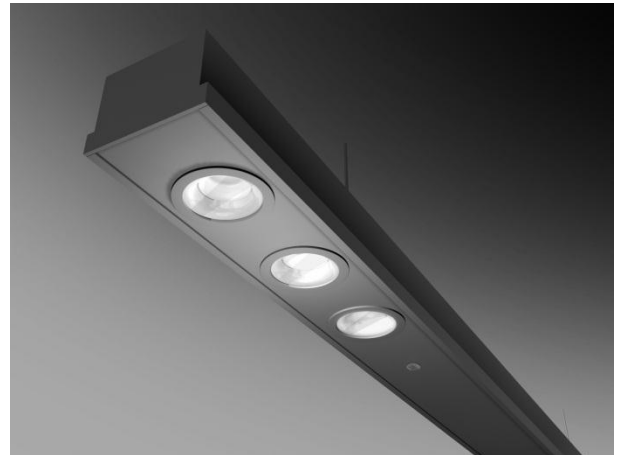
Recessed WILA Profile

Recessed WILA continuous extruded aluminium profile with side flange to support SAS330 ceiling tile for lighting & services using T5, HIT, CFL and low voltage.

Profile with 2x Triple 21W R10 LED adjustable downlights at either end and 3W 3hr integral Emergency downlight finished black

Nominal dimensions 3850mm long, 176mm wide and 164mm deep. **Ceiling type to be confirmed at time of order.**

Product number	WP3850621ALEDLEM
Lamp Type	Xicato LED 21W 2 x 3W LED
Lamp Colour	4000K
Control	Non Dim
Construction	Extruded aluminium
Finish	Silver RAL9006
Suspension	M6 threaded Rod (by others)
Weight	24.8 Kg



DS0718
ISSUE DATE 12/02/2013



1 Ref : Z : Luminaire data

1.1 Schmitz-Leuchten, TOOL (WS36212.06)

1.1.1 Data sheet

Manufacturer: Schmitz-Leuchten



WS36212.06 pendant luminaire TOOL

nickel mat surface
 round construction form with acrylic tube satin Ø 180 x 940 mm
 total length of the lamp incl. acrylic tube L = 1.100 mm
 steel rope suspensions and transparent feeder of canopy
 total length of suspension till the bottom of the lamp L = 3.000 mm, can be shortened
 light distribution symmetrical in addition with HIT-downlight
 equipment: 2 x T16, 14/24 W, G5 + 1 x CDM-R111, 35 W, GX 8,5
 with electronic ballast
 weight 5,2 kg
 protective rating IP20
 protective class I
 conformity mark ENEC 24
 F-marking

Luminaire data

Luminaire efficiency	: 86.6%
Luminaire efficacy	: 47.49 lm/W
Classification	: B41 ↓ 64.1% ↑ 35.9%
CIE Flux Codes	: 48 62 80 64 88
Control gear	: electronic ballast
System power	: 93 W
Diameter	: 180 mm
Height	: 1225 mm

Equipped with

Quantity	: 1
Designation	:
Power	: 83 W
Colour	: nw + ww
Luminous flux	: 5100 lm

