

rev	details	by	date
T01	issued for stage E	cf	06.08.10
T02	issued for Tender	cf	13.10.11
T03	Application for planning approval	JA	27.11.12
T04	Construction - Draft	JA	29.11.12
T05	For Construction	OD	11.12.12

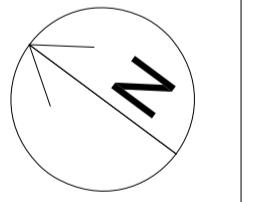
- Notes**
- All dimensions in millimeters.
 - All dimensions are indicative and need to be confirmed by engineers
 - All structural elements are subject to further design by engineers. Drawings are indicative to show general aspirations of External Works surface treatments.
 - To be read in conjunction with Planting Schedule found on drawing OX4504-5-005

- Key**
- Groundcover Mix A
 - Groundcover Mix C
 - Perennials / Grass Plant Mix for planters
 - Herbaceous/ Perennials/ Grasses
 - Anemone japonica 'Honorine Jobert'
 - Proposed tree for planter
 - Buxus hedge - 200(w) x 300mm (h)

Architects
 RSH+P
 Thames Wharf
 Rainville Road
 London
 W6 9HA

Engineers
 Arup
 13 Fitzroy Street
 London
 W1T 4BQ

Engineers
 Ramboll Whitby Blvd
 60 Newman Street
 London
 W1T 3DA



Project title
British Museum WCEC

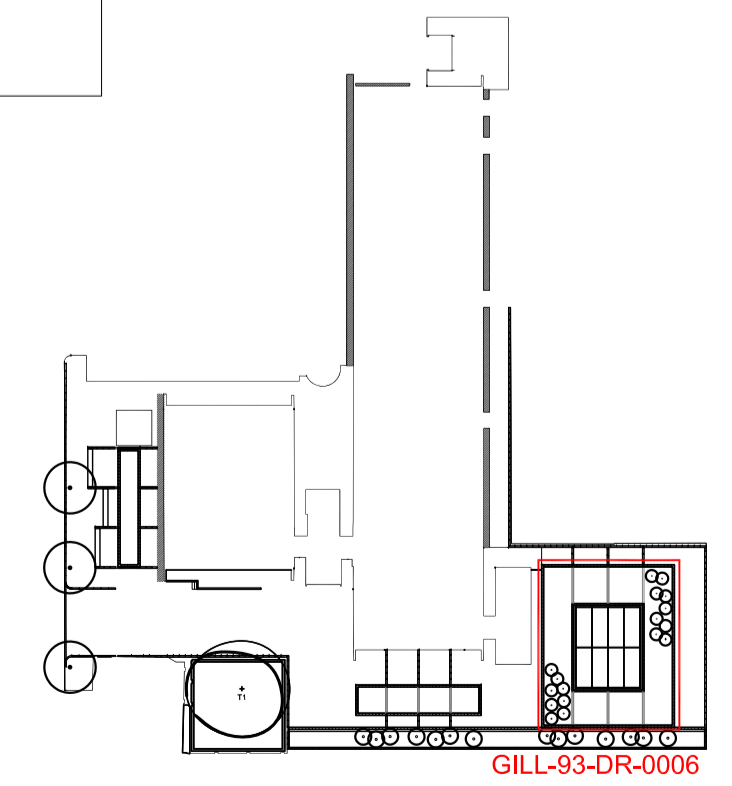
Drawing title
**Planting Plans: Sheet 2 of 4
 Roof light surround**

CONSTRUCTION	Drawing status	Scale	Drawn
	1:200 @ A1	CF	Checked
	06.08.2010	SR	SR
	Drawing number	Revision	

GILL-93-DR-0006 T05

Client
 World Conservation and Exhibitions Centre

GILLESPIES
 NTS
 1 St John's Square, London EC1M 4DH
 P: 020 7253 2020 F: 020 7253 3900 E: enquir@ngillespies.com



2 Key plan - Planting Plans
 NTS