

rev	details	by	date
T00	70% Tender submission	AL	17.08.11
T01	For Tender	OD	13.10.11
T02	For Tender - refer to drawing for changes	OD	18.01.12
T03	Construction - Draft	OD	29.11.12
T04	For Construction	OD	11.12.12
T05	For Construction	OD	13.08.13

**NOTES**

- 1.0 All dimensions in millimeters.
- 1.1 All dimensions are indicative and need to be confirmed by engineers
- 1.2 All structural elements are subject to further design by engineers. Drawings are indicative to show general aspirations of External Works surface treatments.

**Architects**  
RSH+P  
Thames Wharf  
Rainville Road  
London  
W6 9HA

**Engineers**  
Arup  
13 Fitzroy Street  
London  
W1T 4BQ

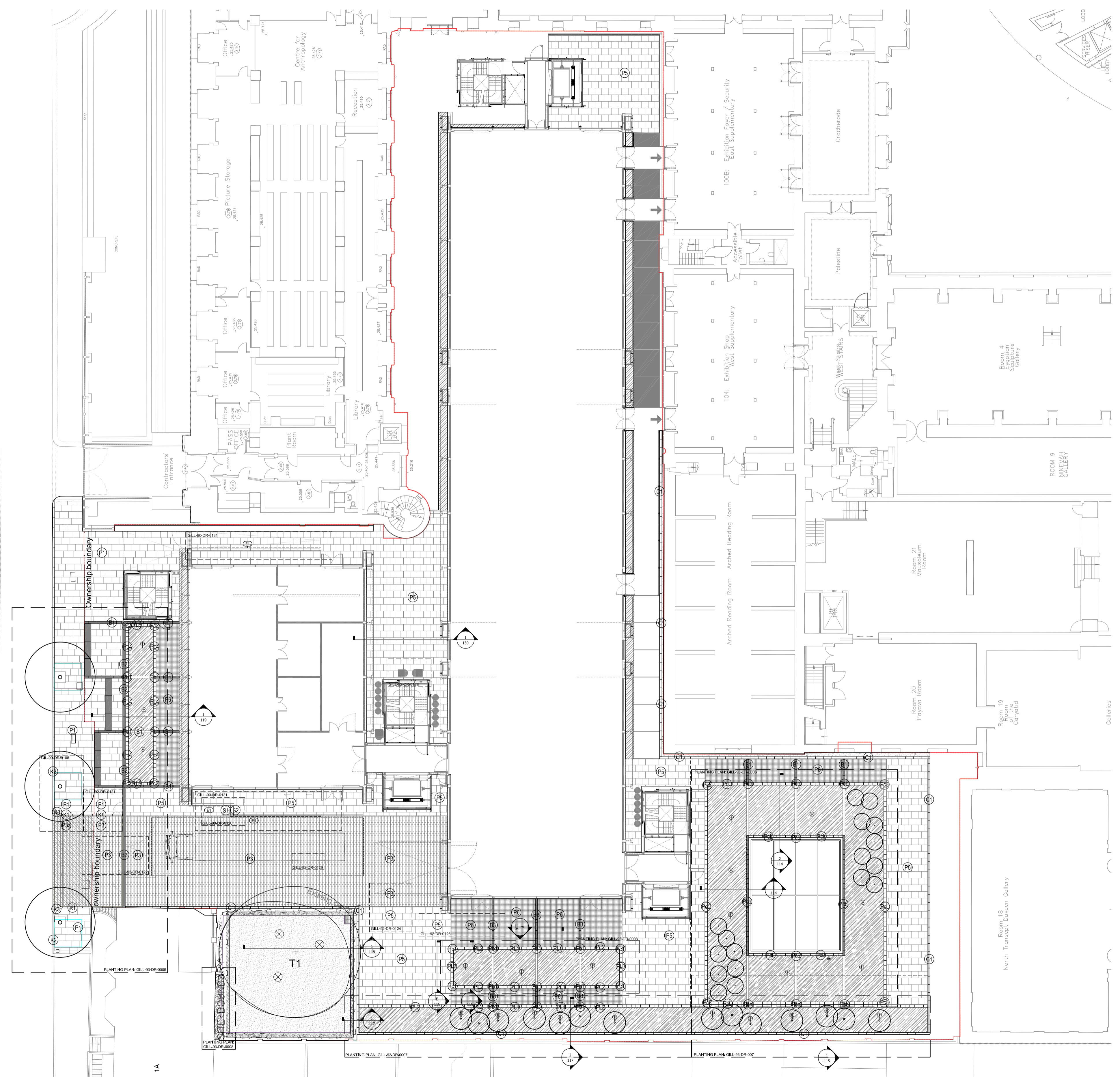
**Engineers**  
Ramboll Whitby Blvd  
60 Newman Street  
London  
W1T 3DA

Project title  
**British Museum WCEC**

Drawing title  
**External Works Reference Plan**

Drawing status	Scale	Drawn
<b>TENDER</b>	Date	Checked
	17.08.11	SR
Drawing number		Revision
<b>GILL-90-DR-0009</b>		<b>T06</b>

Client  
**T06**



**LEGEND**

- Px - PAVING
- Bx - GRANITE BANDS
- Pt1 - GRANITE BANDS (PLANTER FULL BLOCK)
- Pcb - GRANITE BANDS (PLANTER CLADDING)
- PL - GRANITE TO PLANTERS (FULL BLOCK)
- Pc1 - GRANITE PLANTER CORNER BLOCK
- PcL - GRANITE CLADDING AND COPING TO PLANTER
- C - GRANITE COPING STONES - TO BOUNDARY
- S - GRANITE STEPS
- K - GRANITE KERBS
- E - GRANITE ELEVATIONS

1 Reference Plan  
Rev: 13.08.11