

# Institute of Education

## Catering Kitchen Support Facilities Design & Access Statement

---

### Contents

1.0 Architectural and Historic Context Page 2

2.0 The principles and justification  
for the proposed works Page 2

3.0 Access Statement Page 4

### Section 2

Photographs Pages 5 to 11

### Appendix A

Copy of Listing Pages 12 to 14

## **1.0 Architectural and Historic Context**

### **1.1 Architectural Significance and Character of the Building**

The building was designed by Denys Lasdun and Partners in 1965 and constructed from 1970 to 1976. A library extension was added by the same practice in 1990-93.

The building was listed grade 2\* in December 2000, 'particularly important buildings of more than special interest', placing it among the most important 8% of listed buildings.

The listing noting '*the upper teaching spaces were designed to be flexible, and continue to be altered regularly- a tribute to the success of the original concept*'.

A copy of the listing is contained in appendix A

## **2.0 The Principles and justification for the proposed works:**

### **2.1 General**

The Institute of Education are relocating their catering kitchen to Level (Listed Building Approval Ref 2013/2742/L and Planning Approval Ref 2013/2713/P

Over the years a number of rooms off the service road have been converted to informal storage areas.

To support the new kitchen it is proposed to refurbish these rooms to provide staff facilities to support the new catering kitchen

# Institute of Education

## Catering Kitchen Support Facilities Design & Access Statement

---

The proposal is to carry out the refurbishment in line with the principles previously agreed with Camden Council and English Heritage Conservation officers for work carried out to 20 Bedford Way

Previous relevant approvals include:	Listed Building Reference
2003 SCLC	Ref 2004/0263/L
2005 Lecture Room Refurbishment	Ref 2005/1760/L
2005 TV Studio Refurbishment	Ref 2005/2824/L
2006 Level 4 Library Alterations	Ref 2006/2614/L
2007 Level 5 & 6 Refurbishment	Ref 2007/0768/L
2007 Core and Doors Installation	Ref 2007/2910/L
2007 Refurbishment of existing offices	Ref 2007/4498/L
2008 Corridor ceiling repairs	Ref 2008/2642/L
2010 Internal alteration, Level 4 Library	Ref 2010/3267/L
2010 Children's Centre	Ref 2010/4271/L
2010 Level 2 Library Mezzanine	Ref 2010/5549/L
2013 Level 2 Catering Kitchen	Ref 2013/2713/P
2013 Level 2 Catering kitchen	Ref 2013/2742/L

### 2.2 Areas of Special interest

The areas highlighted in the listing as being of special interest will not be affected by the proposed works

### 2.3 New Staff Facilities.

The Listing acknowledges that ancillary spaces were designed to be flexible and were to be subject to change and '*continue to be altered regularly*'.

It is proposed to refurbish the areas in line with the principles established with previous Listed Building consents detailed above, as follows:

#### 2.3.1 Wall linings to staff toilets and changing areas.

To provide a hygienic, easy to clean wipe down surface, it is proposed to provide a 38mm deep service zone to accommodate conduit and water services.

Drawing No 1238/400 shows the proposed lining system comprising 38 x 50mm softwood battens lined with 12mm plywood and a PVC hygienic wall lining with welded joints and the minimum number of penetrations.

# Institute of Education

## Catering Kitchen Support Facilities Design & Access Statement

---

### **2.3.2 Staff Rest Room walls.**

The existing painted concrete wall will be lined with moisture resistant plasterboard fixed to the wall by the 'dot and dab' method

### **2.3.3 Suspended ceilings.**

A hygienic suspended ceiling will be installed in the refurbished areas.

### **2.3.4 Flooring**

The existing floor finishes will be overboarded with 6mm plywood underlay before laying a new hygienic safety floor with coved skirting welded to the wall lining (see drawing 1221/410 detail C)

## **2.4 Sources.**

- The Statutory Listing Ref 798-1-1013394
- Paul Drury, The Drury Mc Pherson Partnership: Institute of Education Initial report on Conservation Issued May 2006

## **3.0 Access Statement**

### **3.1 General**

There is level access from the Service Road to the proposed new kitchen and lifts to provide access to all floors.

Section 2  
Photographs

# Institute of Education Catering Kitchen Support Facilities Design & Access Statement

---



Photograph A



Photograph B

# Institute of Education Catering Kitchen Support Facilities Design & Access Statement

---



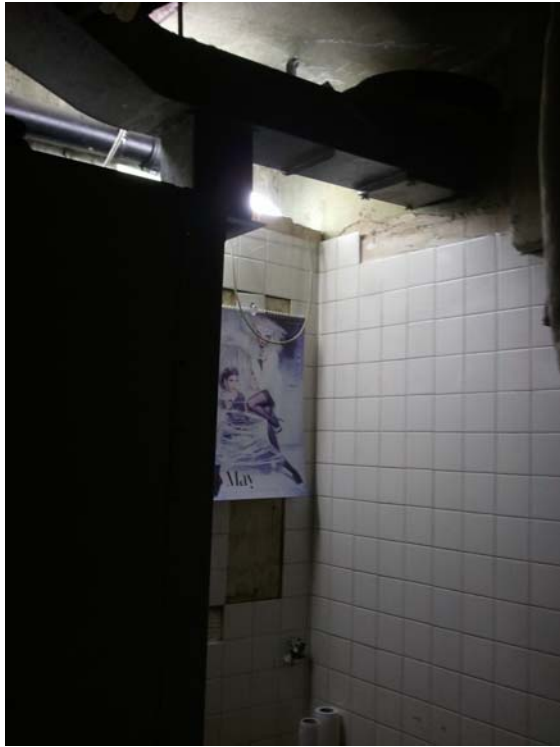
Photograph C



Photograph D

# Institute of Education Catering Kitchen Support Facilities Design & Access Statement

---



Photograph E

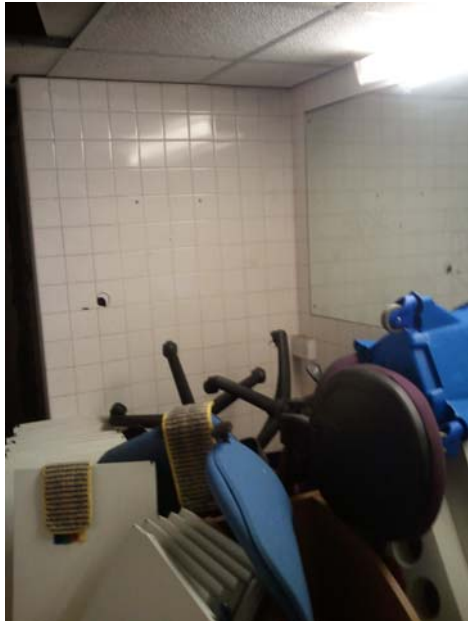


Photograph F



# Institute of Education Catering Kitchen Support Facilities Design & Access Statement

---



Photograph G



Photograph H

# Institute of Education Catering Kitchen Support Facilities Design & Access Statement

---



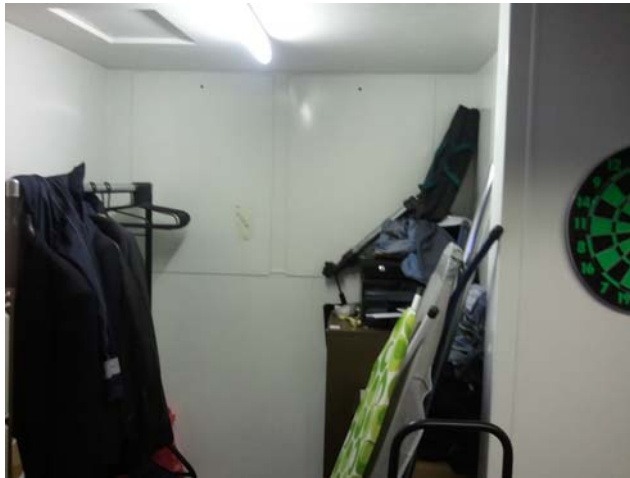
Photograph J



Photograph K

# Institute of Education Catering Kitchen Support Facilities Design & Access Statement

---



Photograph L



Photograph M



Photograph N

Appendix A  
Copy of Listing

# Institute of Education

## Catering Kitchen Support Facilities Design & Access Statement

---

798-1/0/10133 BEDFORD WAY  
04-DEC-00 Camden  
(West side)  
17, 20 AND 26  
Institute of Education, Clore Institute  
of Advanced Legal Studies and accommodation  
for University College

GV II\*

University teaching building, 1970-6 by Denys Lasdun and Partners, extended 1990-3, also by Sir Denys Lasdun and Partners. In situ reinforced concrete and precast mullions with a cladding of prefabricated bronze-anodised aluminium panels and window sections. In plan the building makes a strong barrier to the traffic of Bedford Way while extending the concept of flexible teaching space already explored at the University of East Anglia, Norwich. Six storeys above ground, with three basement storeys, in 1999 numbered 1-9. Flat, paved roof. Long spinal range, with wing to rear, and footings for a second incorporated in 1990-3 library extension. Large basement includes lecture theatre, the Logan Hall, under forecourt facing Lasdun's extension to the School of Oriental and African Studies opposite; conference facilities, students' union and service entrance. Split-level entrance hall gives on to library, drama studio and bookshop, with flexible teaching areas above, mainly facing street, and tutorial rooms, mainly facing courtyard and in wing.

The elevational treatment is in Lasdun's mature language of strata and towers, a grid of aluminium panels and glazing set over concrete plinth on western elevation, with massively over-scaled concrete staircase towers. On the eastern elevation to Bedford Way, the entrance floors are set back behind exposed frame, and has cut-back corners which demonstrate the smooth, sharp concrete particularly forcefully. The quality of finishes is exceptional, and the contrasting texture of materials unique in Lasdun's surviving work. The single spur that was built is highly sculptural, with a striking silhouette of angular concrete escape stairs rising above the floor levels and curtain walling. A similar system of anodised aluminium and glass was adopted by Lasdun for his extension, but with more pronounced glazing bars, and with three pyramidal roof lights that are the clearest indication of the new work. Entrance doors in anodised aluminium surrounds. New entrance on Bedford Way, reached up steps, installed by Lasdun in 1993.

INTERIORS. The interiors are simple, but the quality of concrete finishes is exemplary throughout. The upper teaching spaces were designed to be flexible, and continue to be altered regularly - a tribute to the success of the original concept. The areas of special interest are the lift lobbies, where Lasdun's finishes can be seen at their best, and the entrance hall and principal stair to the lecture theatre. This staircase, in a deep well in which are set giant columns, is a version in smooth concrete with brick treads of his earlier ceremonial stair at the Royal College of Physicians in Regent's Park (LB Camden, grade I), with concrete walls and balustrade. The entrance hall, with pavioured floors, is on two main levels, corresponding to the different level of Bedford Way and the square behind. Separate stairs lead to bookshop on lower level.

While the University of London was discouraged from further expansion in the post-war years it was appreciated that certain departments such as Education, Law and the School of Oriental and African Studies required enlarged facilities. Lasdun was commissioned by the University of London in 1960 to develop the concept of a spinal range along Bedford Way and to its north which had been published by Sir Leslie Martin and Trevor Dannatt the year before. His task was to integrate the new buildings within an existing urban fabric, whose pattern of Georgian squares was belatedly being appreciated. Lasdun's scheme preserved more terraces than had the earlier proposals, and created a new square between his two buildings, much of it formed over the basement lecture theatre. For him, the relationship between the spine building and the SOAS pavilion is paramount.

The building was formally opened by the Queen in 1977. `Lasdun's architecture carries absolute

# Institute of Education

## Catering Kitchen Support Facilities Design & Access Statement

---

conviction', *Architectural Review*, March 1980, p.148. Although a building constructed to a grid, it is Lasdun's interest in planes and interpenetrating masses and belief in pure form and modelling. His synthesis of the modern movement of the 1930s, inspired by working with Wells Coates and Berthold Lubetkin, and his unique understanding of the formalism of the later generation of the New Brutalists makes him a comparable figure with Louis Kahn and is demonstrated particularly well here. This building forms a contrasting mass to the square pavilion of Lasdun's extension to the School of Oriental and African Studies, with which it forms an exceptionally strong group.

*Architects' Journal*, 5 March 1959, p.336

*Architects' Journal*, 14 June 1967, p.1384

*Building Design*, 15 October 1976

*Architects' Journal*, 12 December 1990, p.11

*Architectural Review*, March 1980, pp.145-54

Bridget Cherry and Nikolaus Pevsner, *The Buildings of England, London North*, London, Penguin Books, 1998, pp.279-80