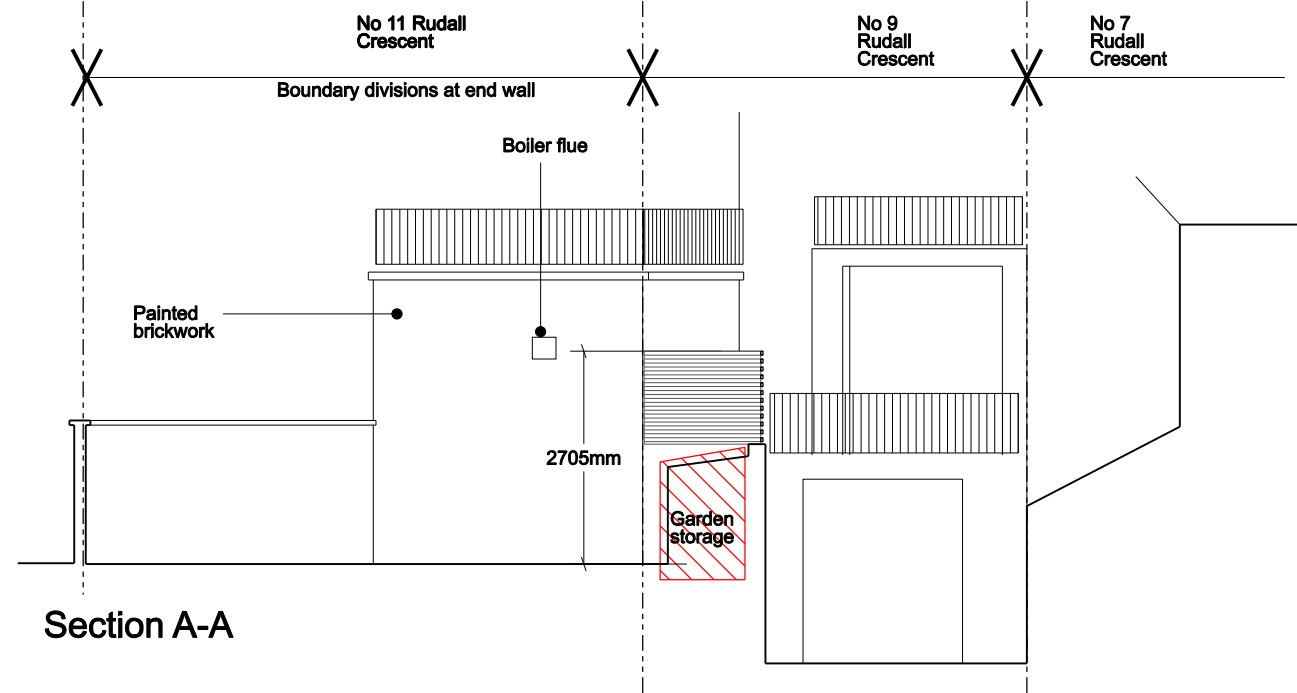
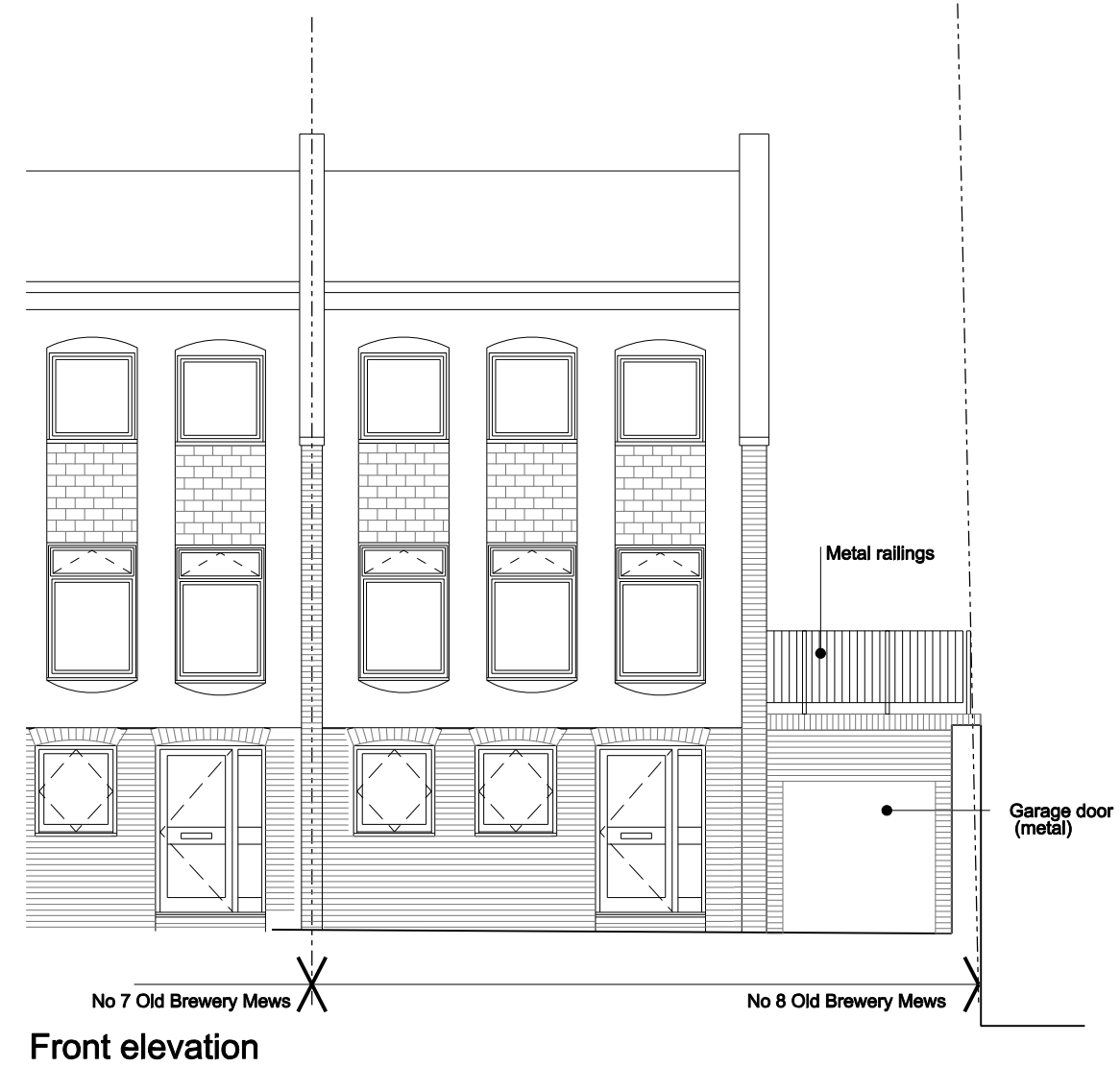
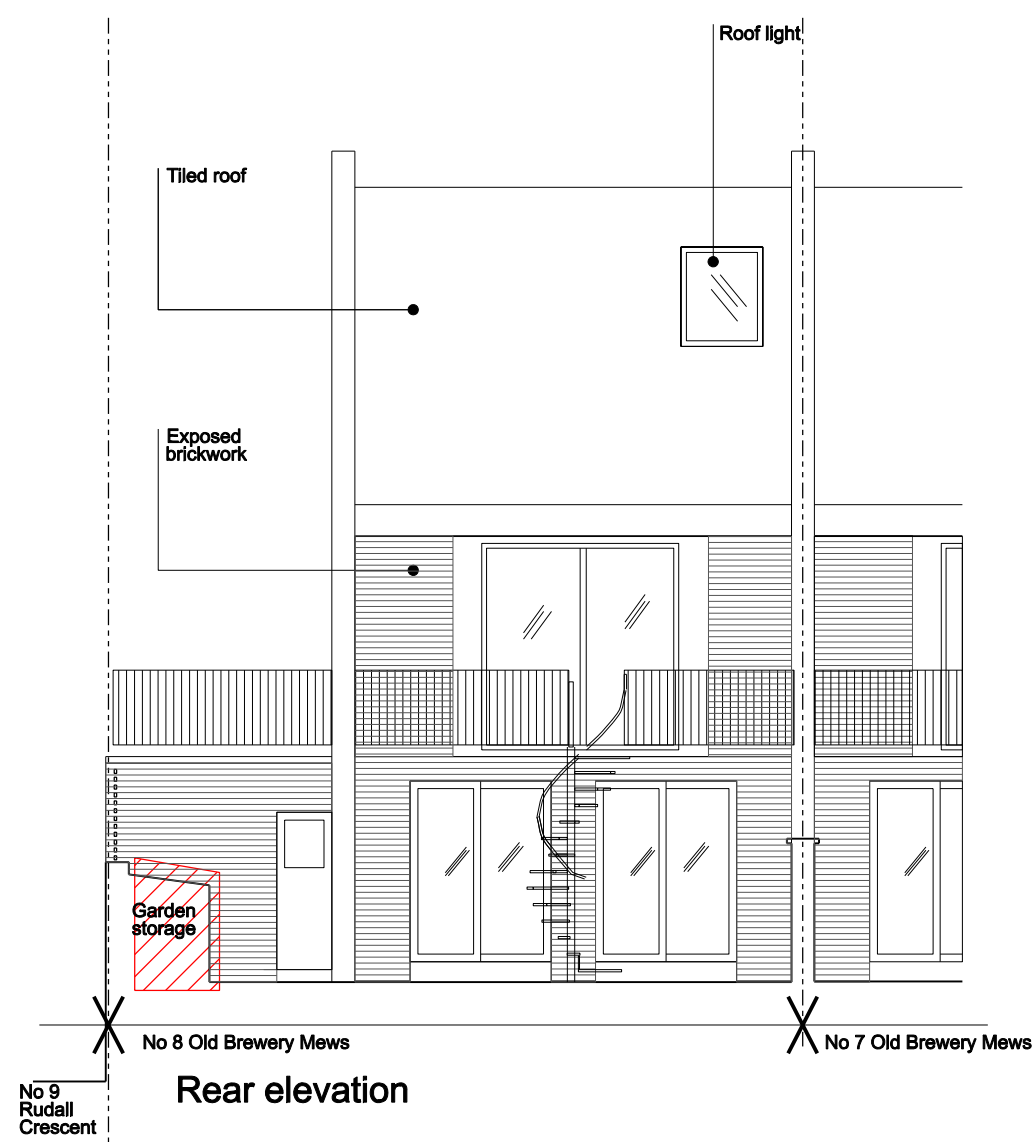
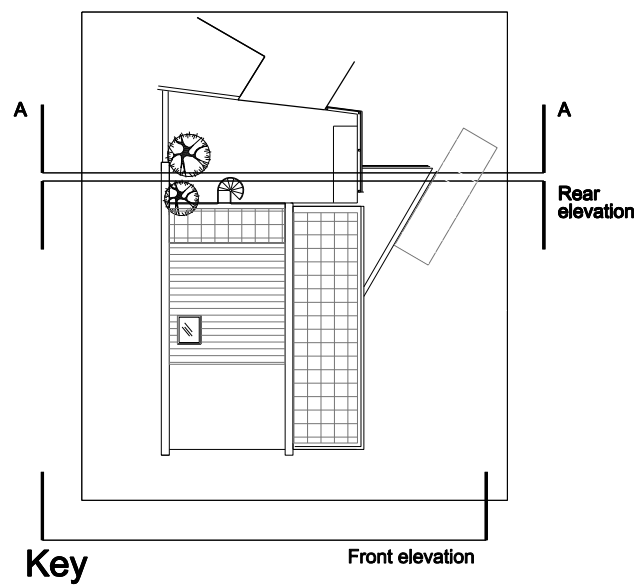


Ground floor plan



0 1 2 3 4 5 metres

Elements to be demolished

**Duncan Woodburn RIBA**  
**Architect**  
 Second floor studio,  
 28 Poland street  
 London W1F 8QP Tel. 0207 637 3819  
 Mob. 07956 661 426

**8 Old Brewery Mews**  
**03 Existing plans and elevations**

August 2013