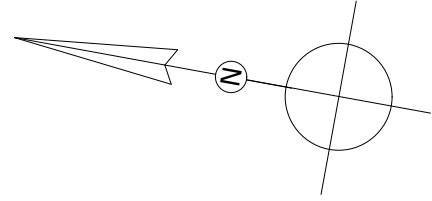


ting app
Ref: 20



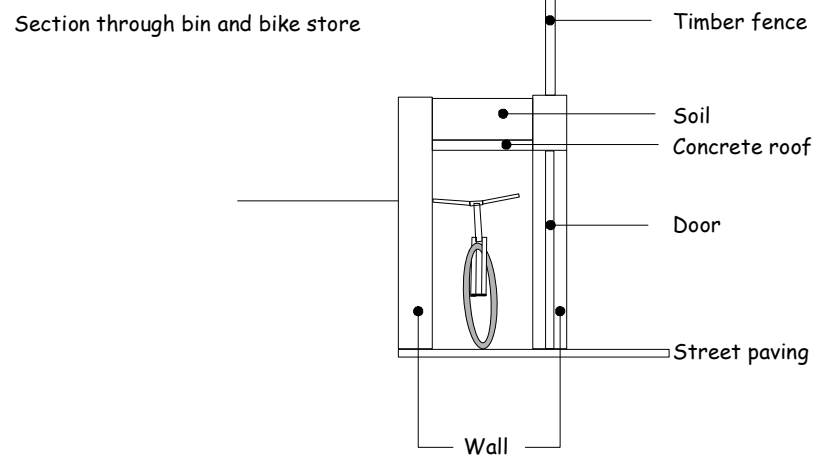
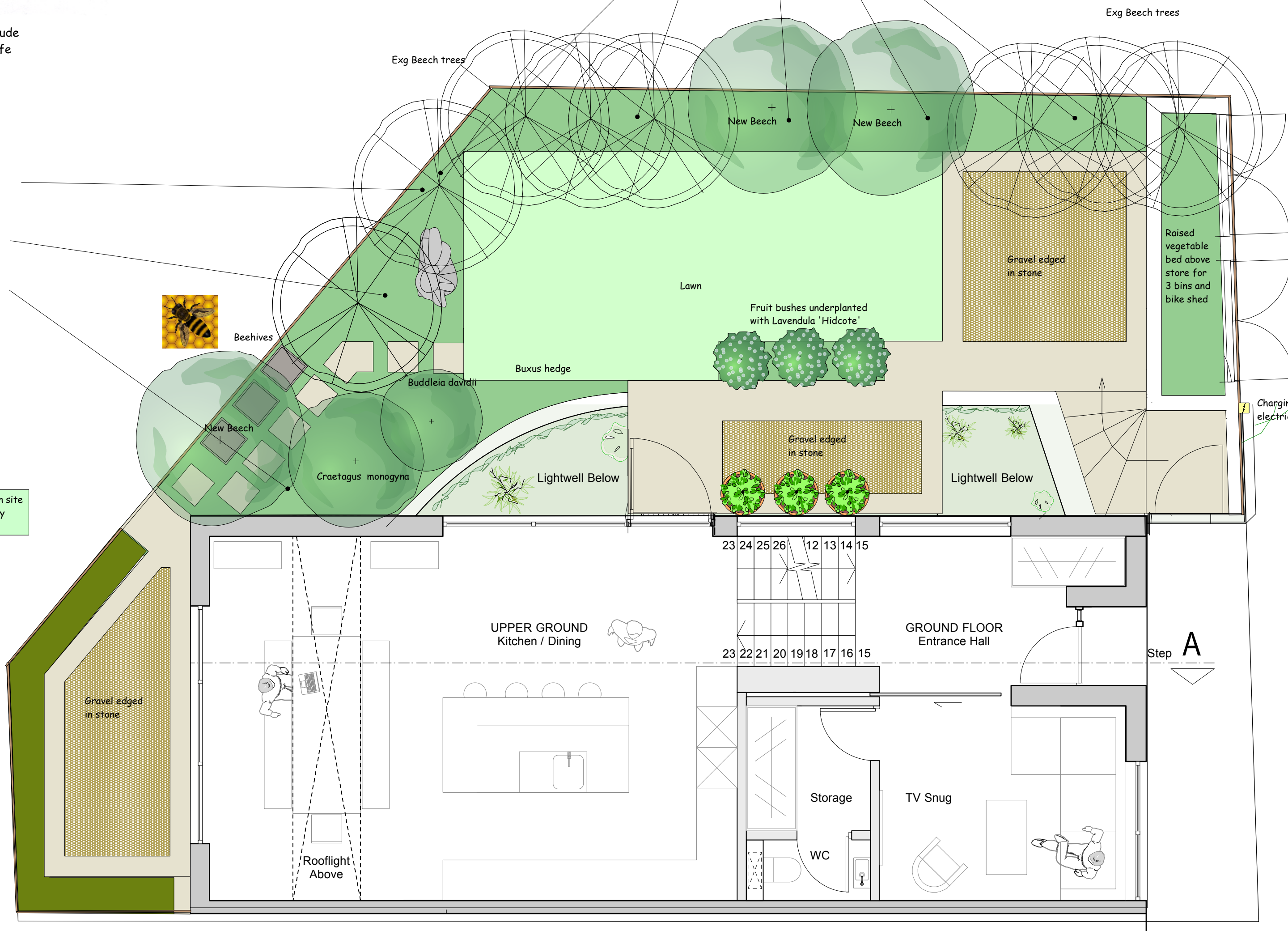
MARK ENRIGHT
The Landscape Garden
Company Limited
Dudden Hill Nurseries
82 Dudden Hill Lane
London NW10 1DD
Tel: 020 8830 7777
Fax: 020 8830 7766



- | | |
|-------------------------------|---------------------------------|
| <i>Cyclamen hederifolium</i> | <i>Hydrangea macrophylla</i> |
| <i>Dicentra spectabilis</i> | <i>Helleborus argutifolius</i> |
| <i>Anemone blanda</i> | <i>Alchemilla mollis</i> |
| <i>Leucjum aestivum</i> | <i>Polygonatum x hybridum</i> |
| <i>Epimedium grandiflorum</i> | <i>Polystichum setiferum</i> |
| <i>Lonicera periclymenum</i> | <i>Cotoneaster horizontalis</i> |
| <i>Cornus alba sibirica</i> | <i>Campanula rotundifolia</i> |
| <i>Leucanthemum vulgare</i> | <i>Echinops ritro</i> |
| <i>Primula vulgare</i> | |

Woodland planting to include plants beneficial to wildlife

- Digitalis purpurea*
- Epimedium grandiflora*
- Polystichum setiferum*
- Lonicera periclymenum*
- Dryopteris felix-mas*
- Euphorbia robbiae*
- Epimedium x rubrum*
- Cyclamen hederifolium*
- Vinca minor*
- Dicentra spectabilis*
- Helleborus argutifolius*
- Mahonia x 'Charity'*
- Anemone blanda*
- Lunaria rediviva*
- Urtica dioica*
- Dipsacus fullonum*
- Alchemilla mollis*
- Tiarella cordifolia*
- Leucjum aestivum*
- Polygonatum x hybridum*
- Primula vulgare*



NB All dimensions must be checked on site before construction. Please report any discrepancies found.

