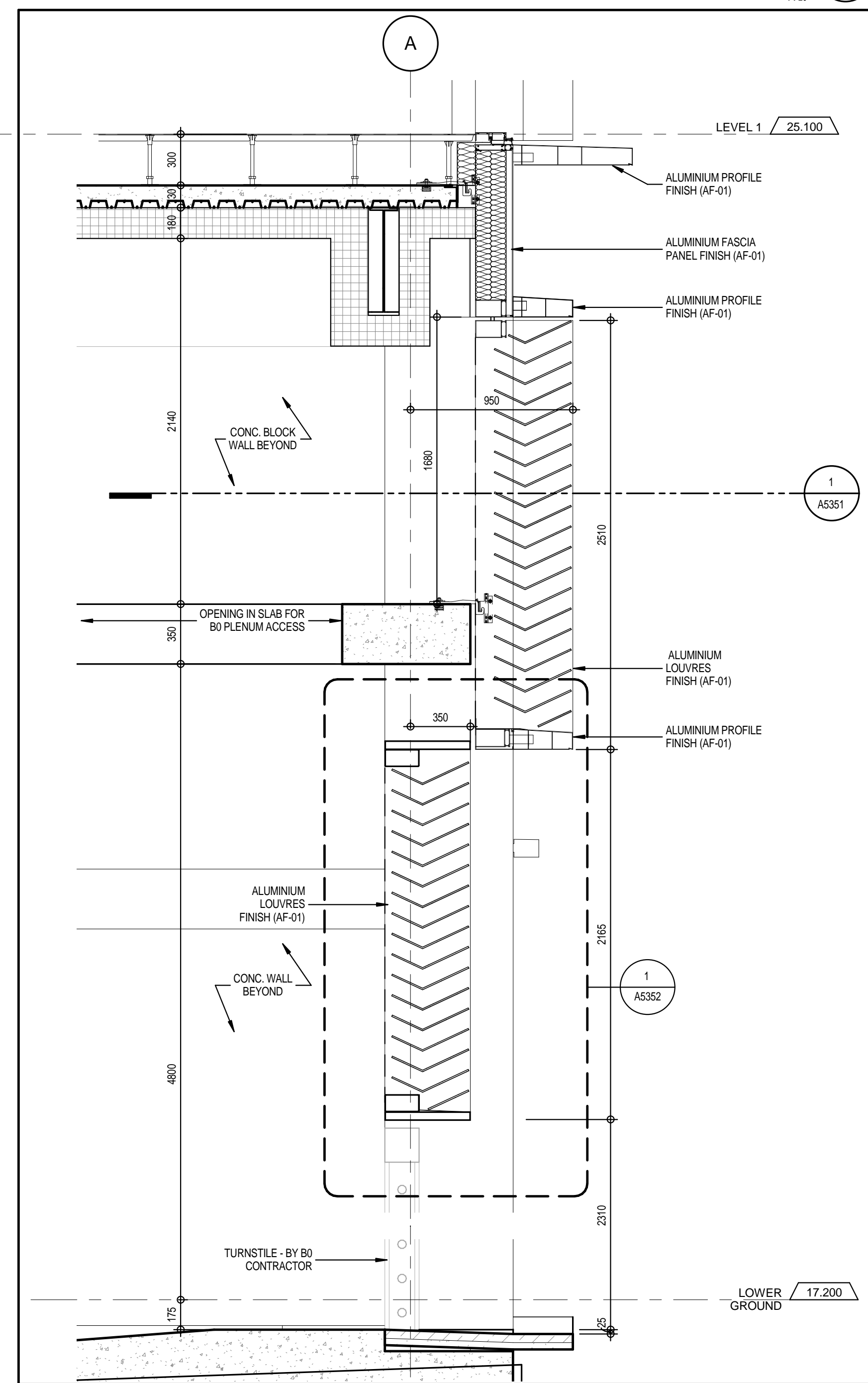
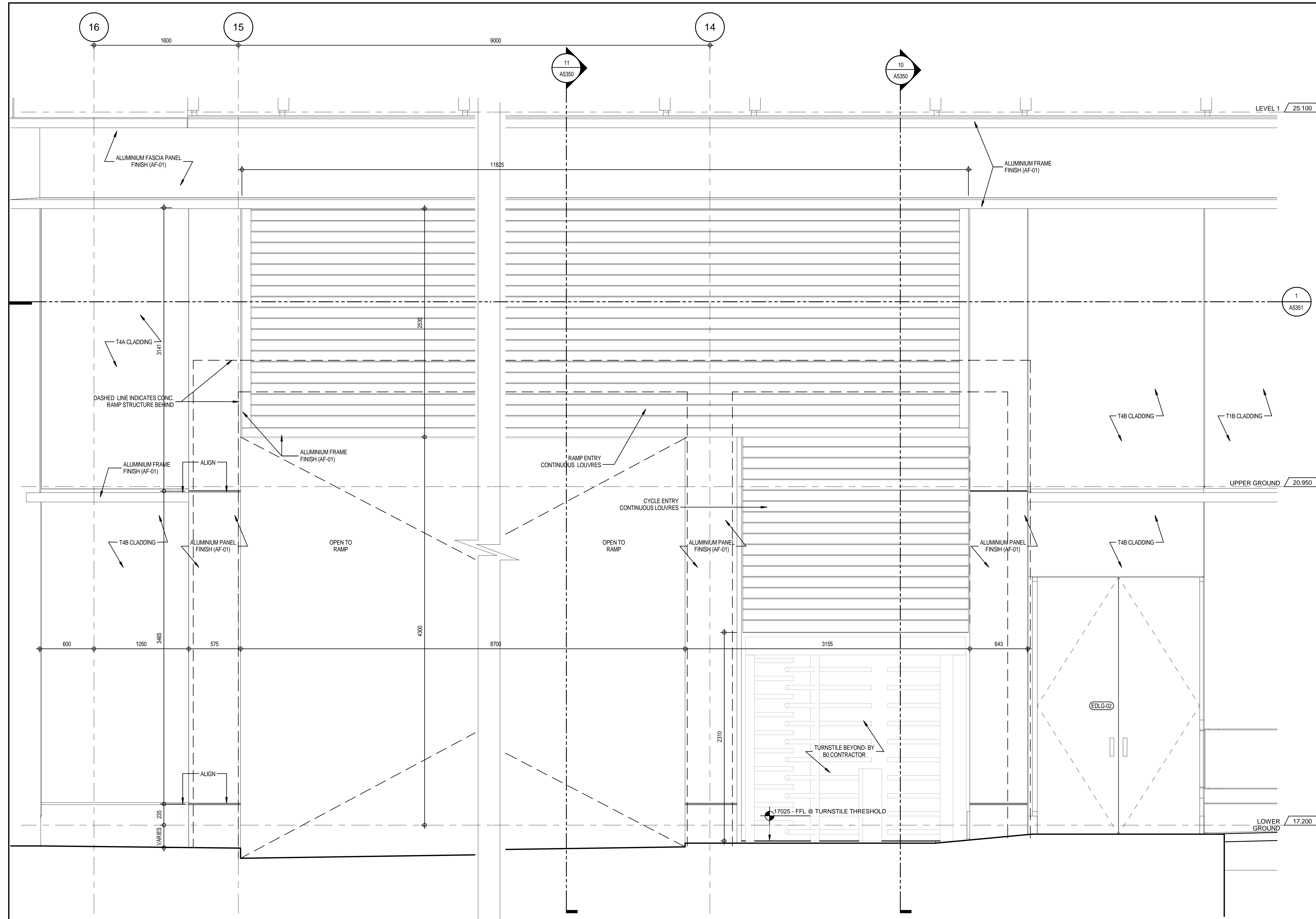


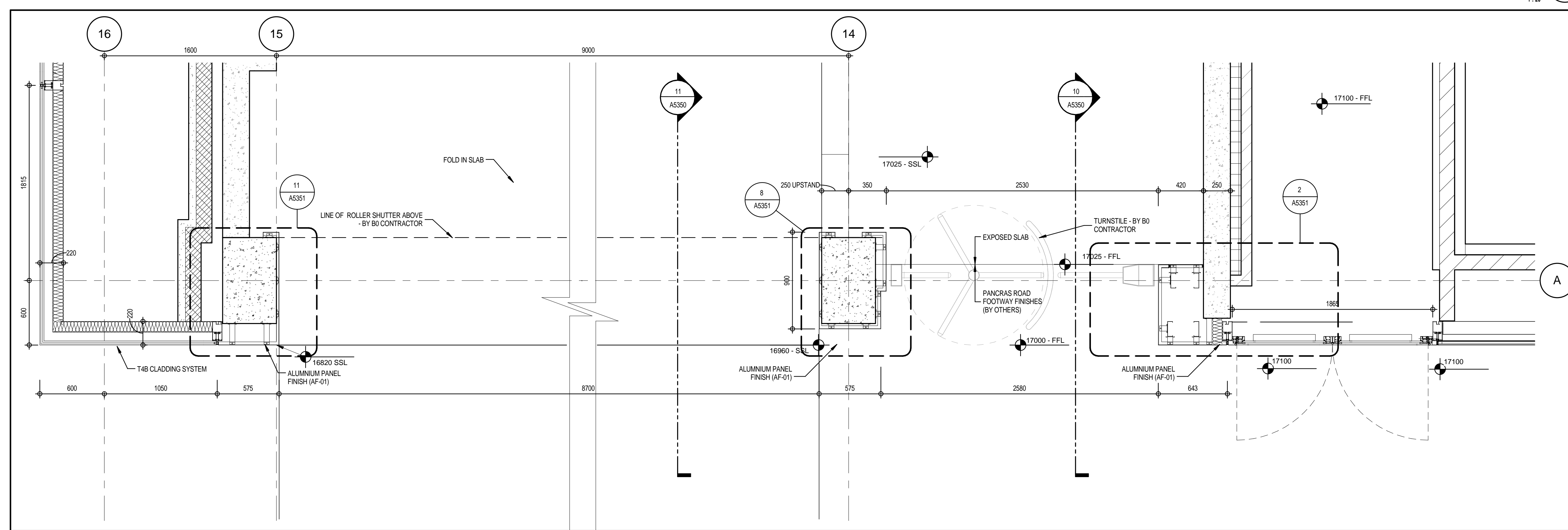
SECTION THROUGH RAMP ENTRY LOUVRES
A5350
1:20



SECTION THROUGH CYCLE ENTRY LOUVRES
A5350
1:20



RAMP AND CYCLE ENTRY ELEVATION
A4021
1:20



RAMP AND CYCLE ENTRY PLAN
A4000
1:20

PROJECT
KINGS CROSS CENTRAL B1

CLIENT
BNPPRED

KEY PLAN
PROJECT NORTH

REVISIONS

NO.	DESCRIPTION	DATE
1	EXTERNAL FACADE - STAGE F	04 Feb 2013

DRAWING STATUS
STAGE F
2/5/2013
12:27:49 PM

Discrepancies must be reported immediately to the Architect before proceeding. Only figured dimensions are to be used. Contractors must check all dimensions on site. This drawing is protected by copyright.
ALL DIMENSIONS ARE SHOWN IN METRIC.

CONSULTANTS

Design Architect
Winmote UK Ltd
133 Oxford Avenue
London, W11 0NE

Executive Architect
Adamson Associates (International) Ltd
4th Floor, One Canada Square,
London, E14 4AB

Structural Engineer
AKT
100 St John Street,
London, EC1M 4BT

M/E
Hosare Lea
One House, 200-208 Tottenham Court Road
London, W1T 3PL

Quantity Surveyor
Gleeds
50 New Cavendish St
London, W1W 6XF

Fire Consultant
AESOM
AESOM House, 63-77 Victoria Street,
St Albans, Hertfordshire,
AL1 3ER

adamson
ASSOCIATES INTERNATIONAL LIMITED

DRAWING TITLE
**RAMP ENTRANCE PLAN
ELEVATION & SECTIONS**

DRAWN
LDG

CHECKED
FHB

SCALE @
A0
1:20

DATE
01/24/13

PROJECT NO.
1050-00

DRAWING NO.
A5350

LOCATION
B1

REVISION
1

C:\Users\lgm\Documents\MCC-TO-COV_DETAILS.dgn/1-1
26/03/13 12:27:49 PM