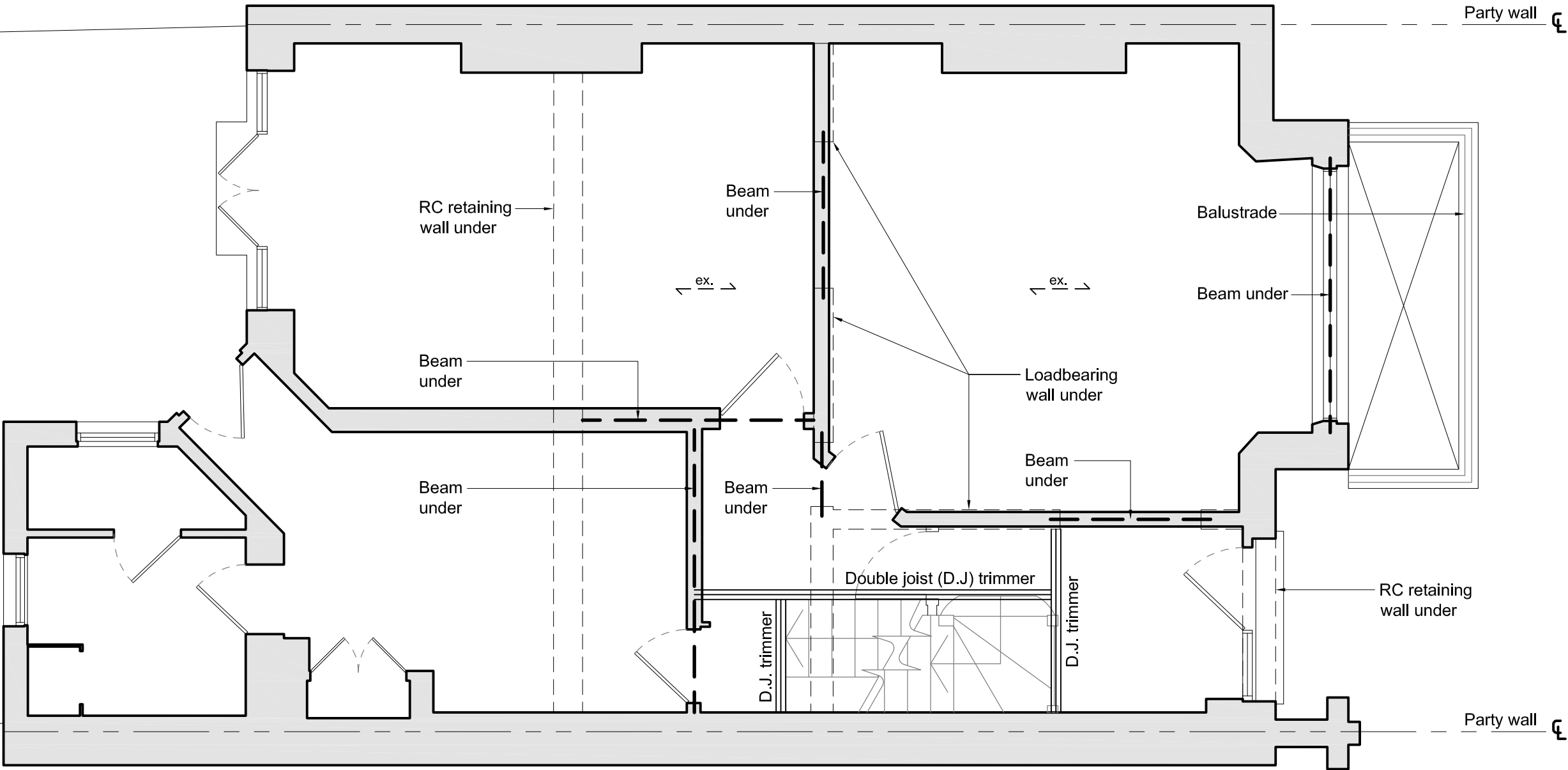


- NOTE:
1. DO NOT SCALE, IF IN DOUBT ASK.
 2. THIS DRAWING IS TO BE READ IN CONJUNCTION WITH ALL RELEVANT STRUCTURAL ENGINEER'S DRAWINGS AND DETAILS, THE SPECIFICATION FOR THE WORKS, THE RELEVANT ARCHITECT'S DRAWINGS AND ANY OTHER SPECIALIST'S DRAWINGS.



FOR PLANNING

Revisions

ALL DIMENSIONS TO BE VERIFIED
ON SITE PRIOR TO FABRICATION
AND ENGINEER INFORMED OF ANY
DISCREPANCIES

2184_S03

Scale at A3 : 1:50

Drw sam

Chk TB

Drawing Title 4a Glenmore Road, London
Proposed Ground Floor

Cambridge Architectural Research Ltd

25 Gwydir Street #6
Cambridge
CB1 2LG. UK

Telephone +44(0)1223 460475
Fax +44(0)1223 464142
Web www.carltd.com