

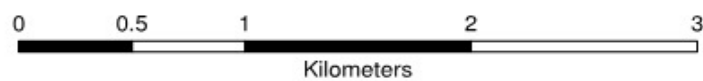
Scale at A3: 1:30,000

Coordinate System:  
British National Grid  
GCS\_OSGB\_1936

#### Legend

- London Borough of Camden
- Camden Wards
- Railway Lines
- A Roads

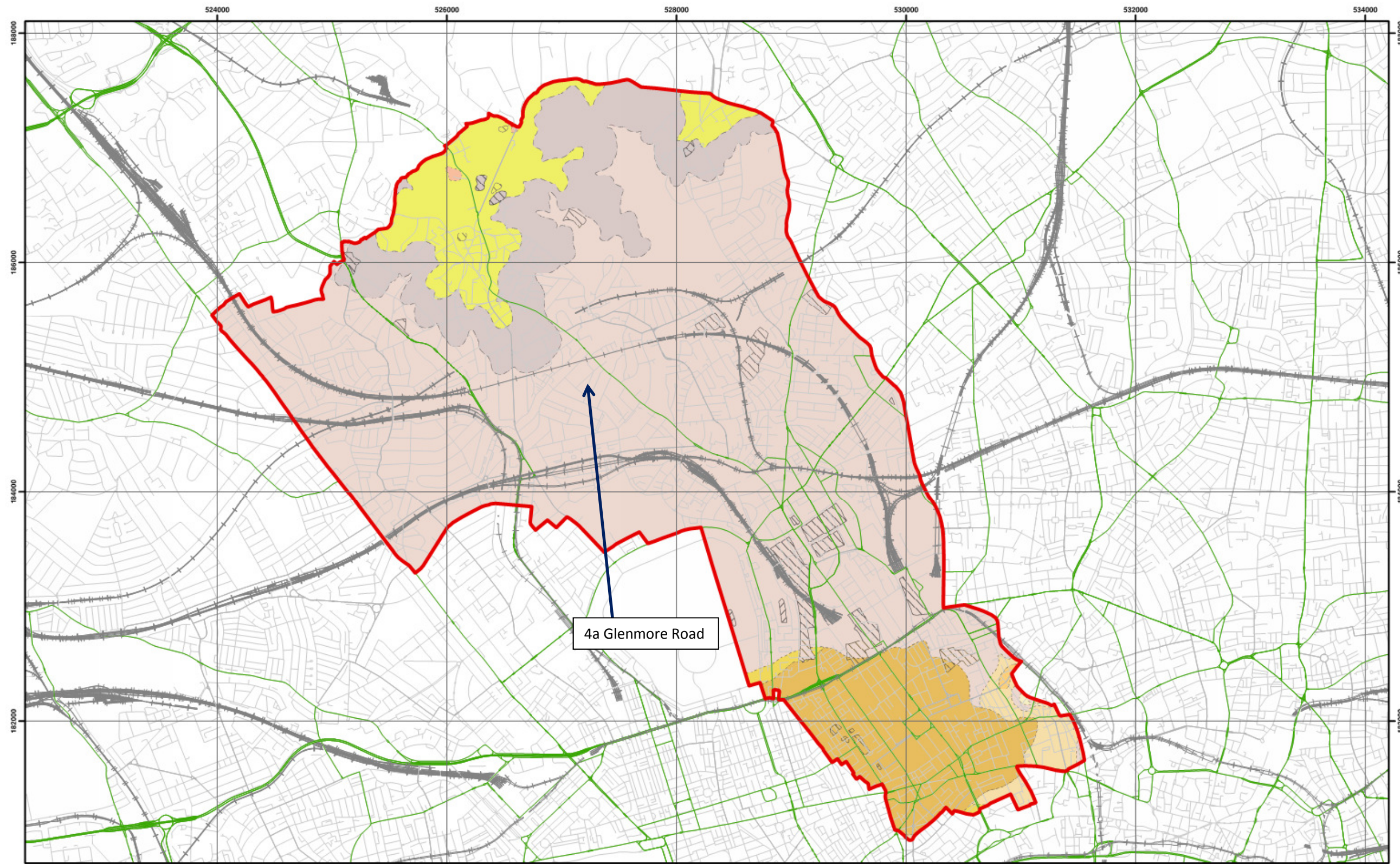
**Camden Geological, Hydrogeological  
and Hydrological Study**  
Camden Administrative Boundaries



213923

FIGURE **1**





Data source - BGS Mapping - Scale 1:10,000

Scale at A3: 1:30,000

Coordinate System:  
British National Grid  
GCS\_OSGB\_1936



#### Legend

- |  |  |  |  |
|--|--|--|--|
| <span style="border: 2px solid red; padding: 2px;"> </span> London Borough of Camden | <span style="background-color: #cccccc; border: 1px solid black; padding: 2px;"> </span> BGS 1:10K Artificial Ground | <span style="background-color: #ffffcc; border: 1px solid black; padding: 2px;"> </span> BGS 1:10K Drift Geology     | <span style="background-color: #ffffcc; border: 1px solid black; padding: 2px;"> </span> BGS 1:10K Solid Geology |
| <span style="color: green;">—</span> Railway Lines                                   | <span style="background-color: #cccccc; border: 1px solid black; padding: 2px;"> </span> MADE GROUND                 | <span style="background-color: #ffffcc; border: 1px solid black; padding: 2px;"> </span> ALLUVIUM                    | <span style="background-color: #ffffcc; border: 1px solid black; padding: 2px;"> </span> BAGSHOT FORMATION       |
| <span style="color: green;">—</span> A Roads   | <span style="background-color: #cccccc; border: 1px solid black; padding: 2px;"> </span> WORKED GROUND               | <span style="background-color: #ffffcc; border: 1px solid black; padding: 2px;"> </span> HACKNEY GRAVEL FORMATION    | <span style="background-color: #cccccc; border: 1px solid black; padding: 2px;"> </span> CLAYGATE MEMBER         |
|  |  | <span style="background-color: #ffffcc; border: 1px solid black; padding: 2px;"> </span> LANGLEY SILT FORMATION      | <span style="background-color: #cccccc; border: 1px solid black; padding: 2px;"> </span> LAMBETH GROUP           |
|  |  | <span style="background-color: #ffffcc; border: 1px solid black; padding: 2px;"> </span> LYNCH HILL GRAVEL FORMATION | <span style="background-color: #cccccc; border: 1px solid black; padding: 2px;"> </span> LONDON CLAY FORMATION   |
|  |  | <span style="background-color: #ffffcc; border: 1px solid black; padding: 2px;"> </span> STANMORE GRAVEL FORMATION   |  |

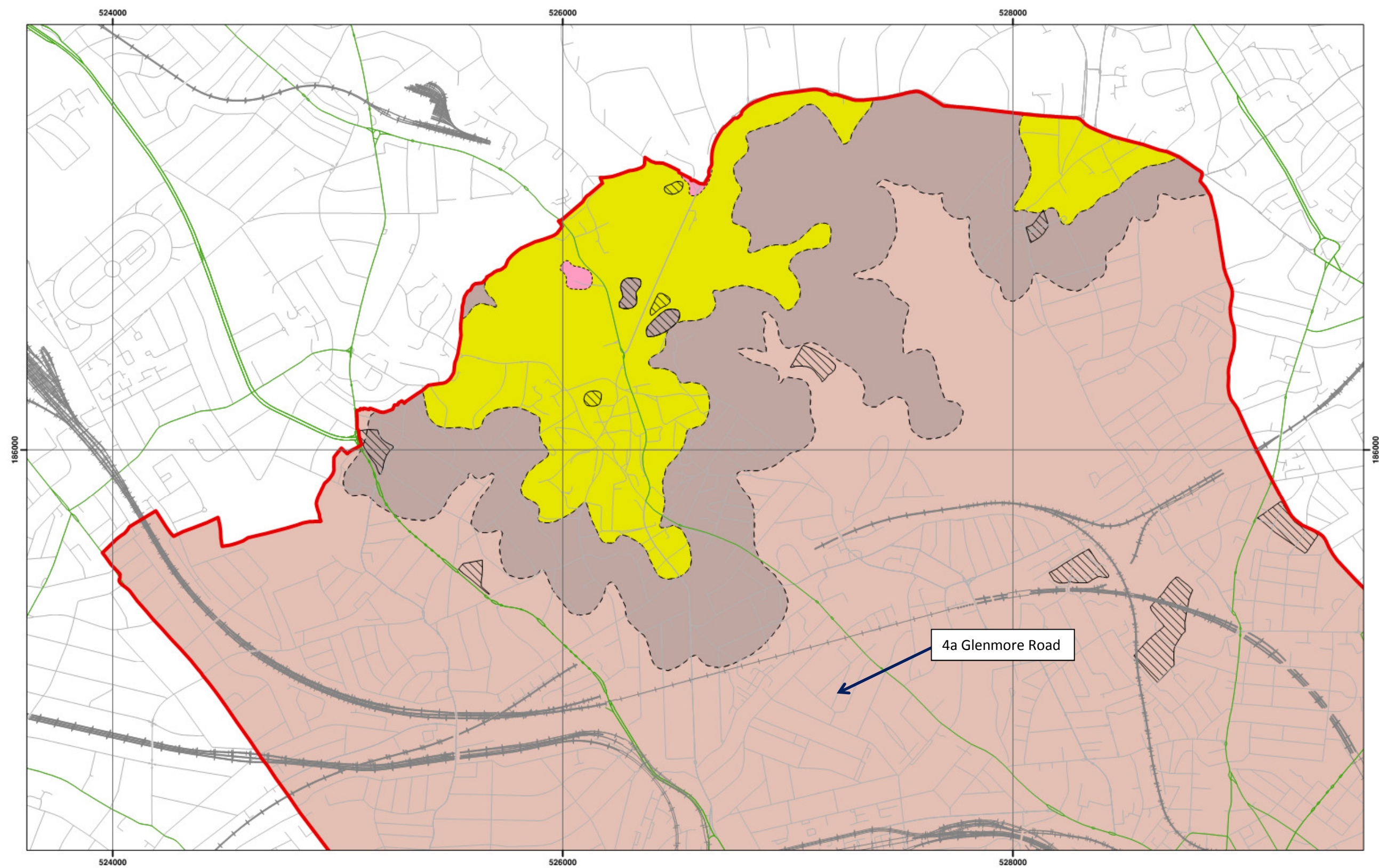
NB: Geological boundaries are largely indicative based on available geological mapping data

**Camden Geological, Hydrogeological  
and Hydrological Study**  
Camden Geological Map

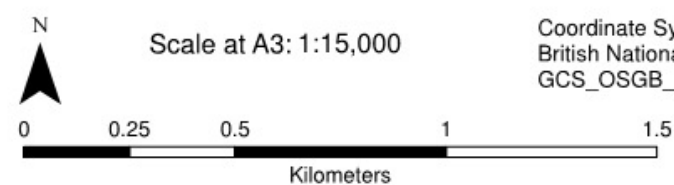
213923

FIGURE **3**





Data Source: BGS Mapping - Scale 1:10,000



Coordinate System:  
British National Grid  
GCS\_OSGB\_1936

#### Legend

<span style="border: 2px solid red; padding: 2px;"> </span> London Borough of Camden	<span style="background-color: yellow; border: 1px solid black; padding: 2px;"> </span> BGS 1:10K Artificial Ground	<span style="background-color: yellow; border: 1px solid black; padding: 2px;"> </span> BGS 1:10K Drift Geology	<span style="background-color: yellow; border: 1px solid black; padding: 2px;"> </span> BGS 1:10K Solid Geology
<span style="color: blue;">—</span> Railway Lines	<span style="background: repeating-linear-gradient(45deg, transparent, transparent 2px, black 2px, black 4px); border: 1px solid black; padding: 2px;"> </span> MADE GROUND	<span style="background-color: yellow; border: 1px solid black; padding: 2px;"> </span> ALLUVIUM	<span style="background-color: yellow; border: 1px solid black; padding: 2px;"> </span> BAGSHOT FORMATION
<span style="color: green;">—</span> A Roads	<span style="background: repeating-linear-gradient(-45deg, transparent, transparent 2px, black 2px, black 4px); border: 1px solid black; padding: 2px;"> </span> WORKED GROUND	<span style="background-color: yellow; border: 1px solid black; padding: 2px;"> </span> HACKNEY GRAVEL FORMATION	<span style="background-color: yellow; border: 1px solid black; padding: 2px;"> </span> CLAYGATE MEMBER
		<span style="background-color: yellow; border: 1px solid black; padding: 2px;"> </span> LANGLEY SILT FORMATION	<span style="background-color: yellow; border: 1px solid black; padding: 2px;"> </span> LAMBETH GROUP
		<span style="background-color: yellow; border: 1px solid black; padding: 2px;"> </span> LYNCH HILL GRAVEL FORMATION	<span style="background-color: yellow; border: 1px solid black; padding: 2px;"> </span> LONDON CLAY FORMATION
		<span style="background-color: yellow; border: 1px solid black; padding: 2px;"> </span> STANMORE GRAVEL FORMATION	

NB. Geological boundaries are largely indicative based on available geological mapping data

**Camden Geological, Hydrogeological  
and Hydrological Study**  
North Camden Geological Map

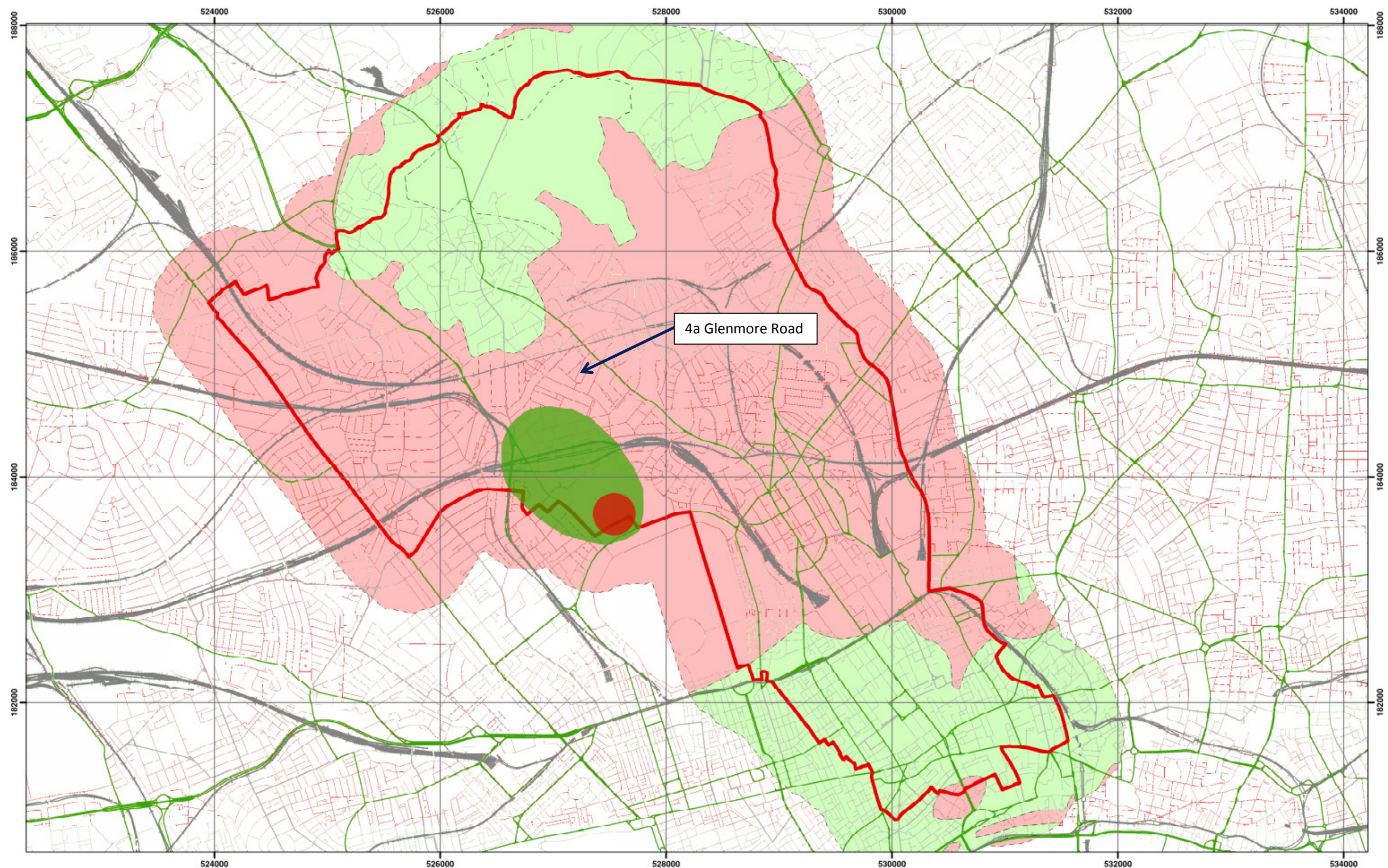
213923

FIGURE **4**









Environment Agency Aquifer Designation based on BGS Mapping



Scale at A3: 1:30,000

Coordinate System:  
British National Grid  
GCS\_OSGB\_1936



#### Legend

<span style="border: 2px solid red; display: inline-block; width: 10px; height: 10px;"></span> Borough of Camden	<b>Aquifer Designation</b>	<b>Source Protection Zone</b>
<span style="color: grey;">—+—</span> Railway Lines	<span style="background-color: #90EE90; border: 1px solid black; display: inline-block; width: 10px; height: 10px;"></span> Secondary A Aquifer	<span style="background-color: #3CB371; border: 1px solid black; display: inline-block; width: 10px; height: 10px;"></span> Outer Source Protection Zone
<span style="color: green;">—</span> A Roads	<span style="background-color: #FFB6C1; border: 1px solid black; display: inline-block; width: 10px; height: 10px;"></span> Unproductive Strata	<span style="background-color: #FF4500; border: 1px solid black; display: inline-block; width: 10px; height: 10px;"></span> Inner Source Protection Zone

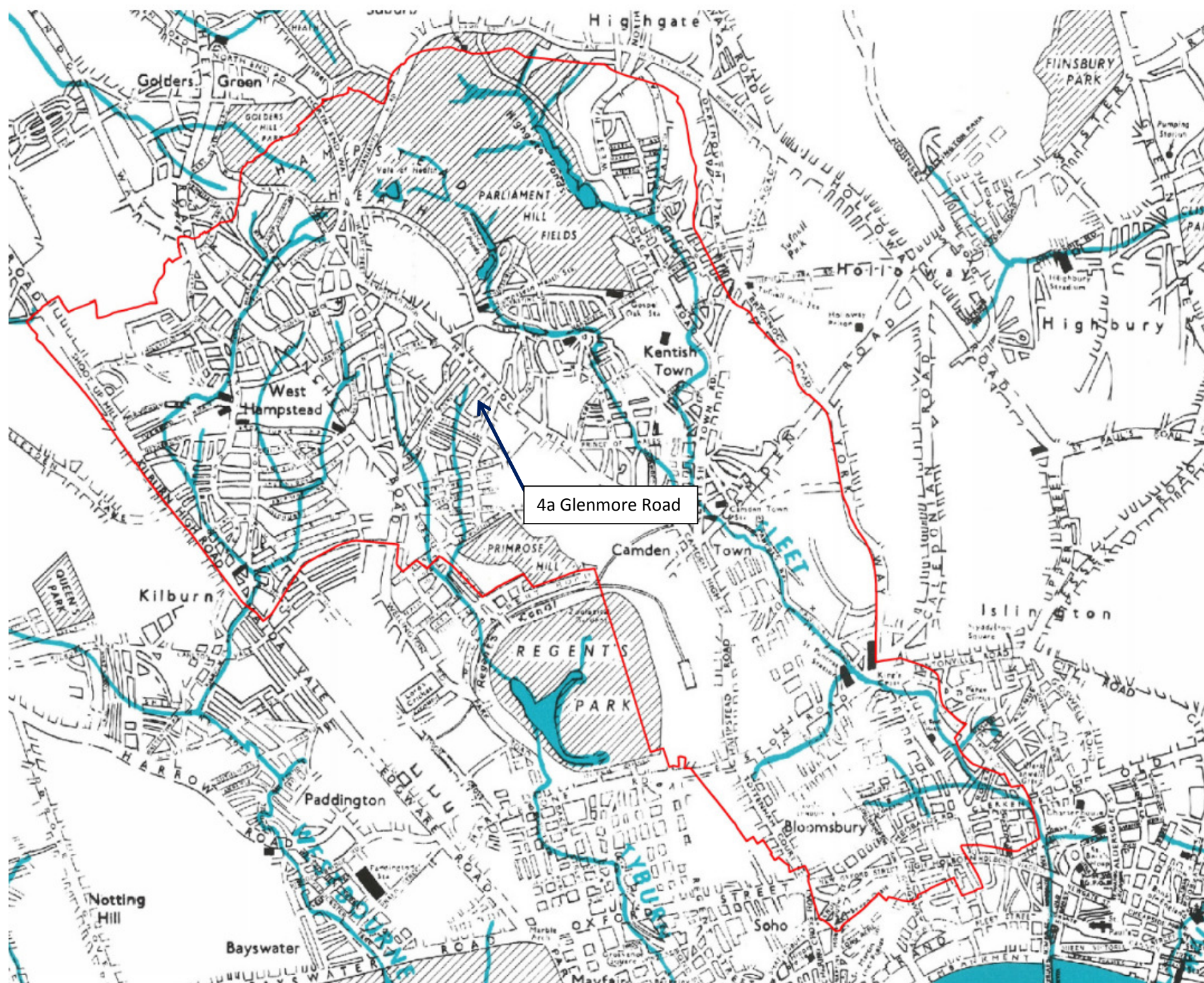
NB. Aquifer boundaries are indicative based on available geological mapping data

**Camden Geological, Hydrogeological  
and Hydrological Study**  
Camden Aquifer Designation Map

213923

FIGURE **8**





Camden Geological, Hydrogeological  
and Hydrological Study  
Watercourses

Source – Barton, Lost Rivers of London

213923

FIGURE 11