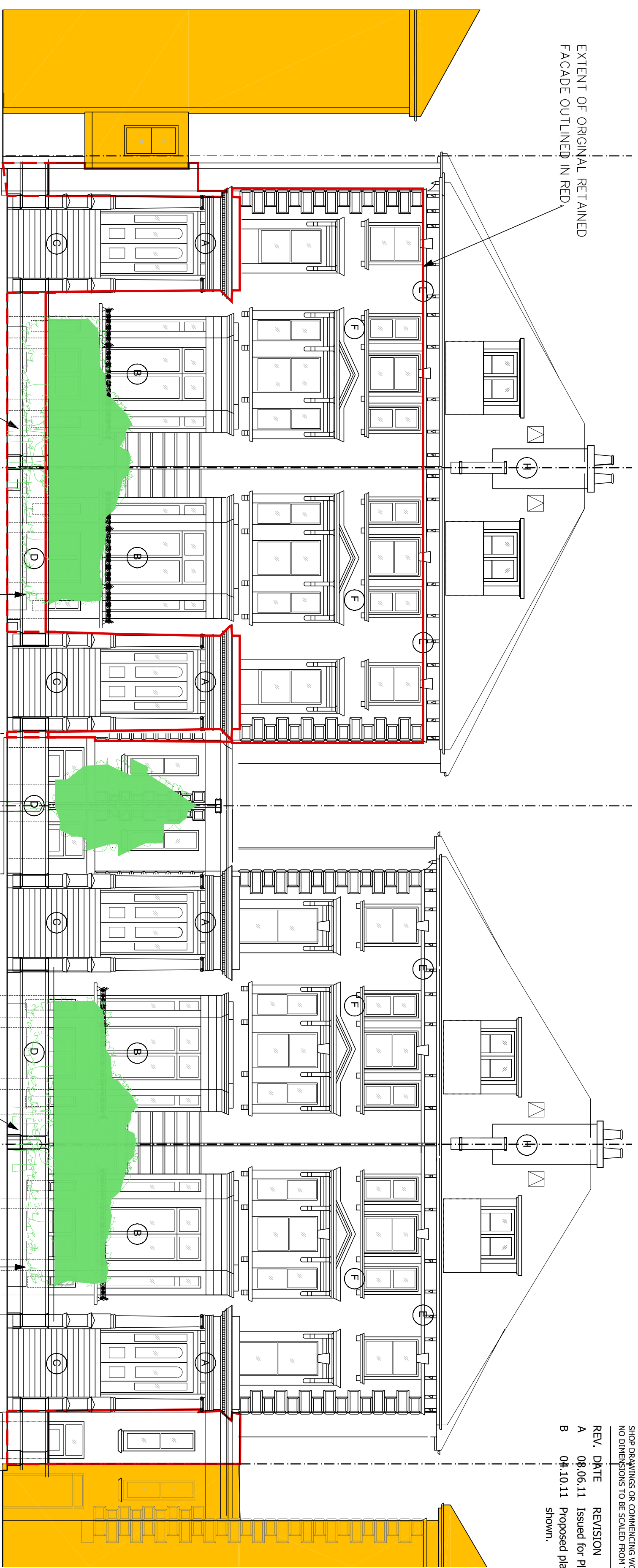


REV.	DATE	REVISION
A	08.06.11	Issued for Planning
B	04.10.11	Proposed planting to front gardens shown.



EXTENT OF ORIGINAL RETAINED  
FACADE OUTLINED IN RED

Trees and raised flower  
beds behind the hedge  
in front gardens

Evergreen hedge along  
the boundary wall

Trees and raised flower  
beds behind the hedge  
in front gardens

Evergreen hedge along  
the boundary wall

41 BELSIZE  
PARK

46 BELSIZE PARK

45 BELSIZE PARK

44 BELSIZE PARK

43 BELSIZE PARK

42 BELSIZE PARK

development consultants

**Osel**  
architects and

PROJECT:

42-45 BELSIZE PARK  
LONDON NW3

CLIENT:

BELSIZE PARK DEVELOPMENTS LTD

DRAWING:

PROPOSED FRONT ELEVATION

DRAWING No.:

11-029/AP3-09

REV:

B

SCALE: 1:100 @ A2

DRAWN: DM/MM

DATE: APRIL 2011

CHECKED: GR

DATE: JUNE 2011

26 Oldbury Place, London W1U 5PR Tel: 020 7224 2447 Fax: 020 7224 2997

E-mail: admin@oselarch.co.uk Web: www.oselarchitecture.co.uk  
©COPYRIGHT EXISTS ON THE DESIGNS AND INFORMATION SHOWN ON THIS DRAWING

**NOTES - READ IN CONJUNCTION WITH PHOTO AND DETAILS SHEETS.**

- |   |   |
|---|---|
| <p><b>A</b></p> <p>DETAIL 1<br/>Entrance porch modeled on local exemplars, including-<br/>New cornice to supporting columns.<br/>New plinth and capital mouldings to Pilasters around entrance doors in lime render.<br/>New front door, sidelights and fanlights to match 54 Belsize Park</p> <p><b>B</b></p> <p>DETAIL 5 &amp; 11<br/>New bay windows modeled on local exemplars, including-<br/>New cornice to bays windows, including dentil mouldings in lime render.(not shown)<br/>New capital mouldings to the returns of the bay windows in lime render.<br/>New rendered window cills and new decorative cast iron cill railings.</p> <p><b>C</b></p> <p>DETAIL 9<br/>Entrance stairs modeled on local exemplars, including-<br/>New stone copplings to Piers, stone treads and risers. Rendered balustrade with stone copplings<br/>New galvanize steel hollow section handrail.<br/>New decorative balustrade Panels between support columns under front porch.</p> <p><b>D</b></p> <p>DETAIL 3<br/>Existing front wall to be rebuilt in its entirety and modeled on local exemplars. Garden walls dividing Properties to be reinstated. New stone copplings.</p> <p><b>E</b></p> <p>DETAIL 10<br/>Decorative timber mouldings to underside of roof soffit to match existing.</p> | <p><b>F</b></p> <p>DETAIL 2 &amp; 4, and 6,7&amp;8<br/>Cornice and cill detail and rendered mouldings to upper level windows modeled on local exemplars.</p> <p><b>G</b></p> <p>DETAIL 12<br/>New cornice and coping to 'link' buildings to match existing.</p> <p><b>H</b></p> <p>Roof<br/>New rendered chimneys and Redbank clay flue pots<br/>New Parapet with coping stone<br/>-Skylights to be Velux conservation roof lights<br/>-New flush glazing above decorative domed skylights above staircase.<br/>-Dormers lined in lead with white painted timber joinery</p> <p><b>I</b></p> <p>Rendered Window Bays (North elevation)<br/>New decorative metal balustrade fixed to top of window bay.<br/>New decorative metal balcony balustrade and support frame black Painted.<br/>New decorative metal Juliet balustrade black Painted</p> <p><b>J</b></p> <p>Rear Facade (North elevation)<br/>-All new brickwork using a mix of salvaged and new matching bricks.<br/>-Pointing modeled on local exemplars.</p> |
|---|---|