

THE ELMS FITZROY PARK LONDON N6 6HS

DESIGN & ACCESS STATEMENT 2012

APPENDIX II : SITE PHOTOGRAPHS FROM DECEMBER 2012

THE ELMS, FITZROY PARK, HIGHGATE, LONDON, N6 6HS

SITE PHOTOGRAPHIC SURVEY DECEMBER 2012 / JANUARY 2013

SECTION 3 - FIRST FLOOR



Alan Power Architects Ltd
13 Needham Road
London W11 2RP

Tel: 020 7229 9375
Email: alan@alanpowerarchitects.co.uk

January 2013



F1



F2



F3



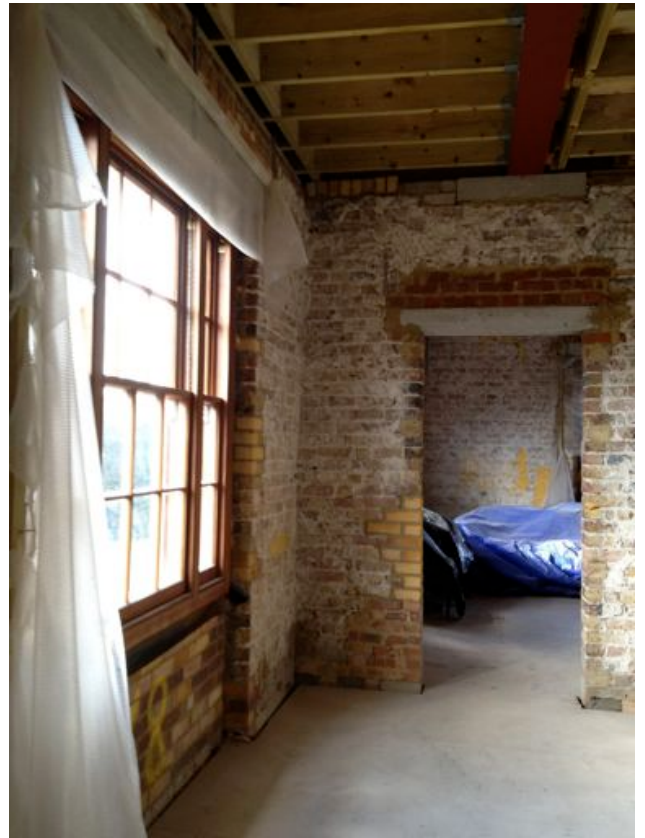
F4



F5



F6



F7



F8



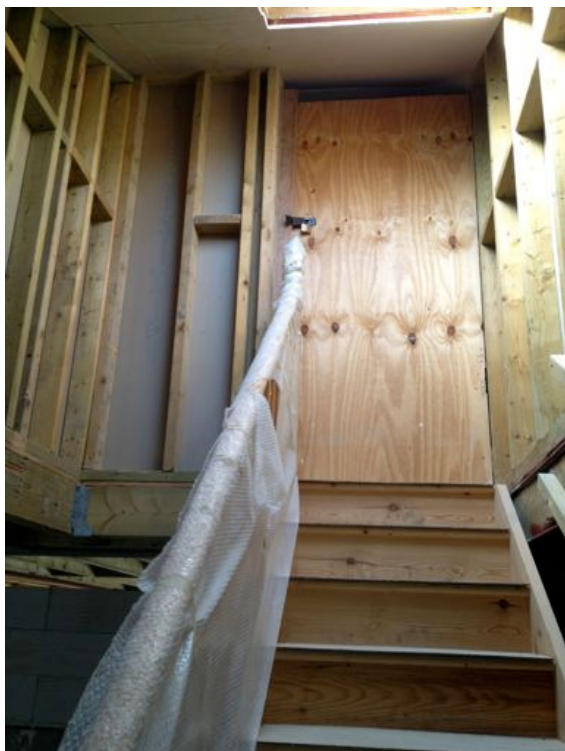
F9



F10



F11



F12



F13