

THE ELMS FITZROY PARK LONDON N6 6HS

DESIGN & ACCESS STATEMENT 2012

APPENDIX II : SITE PHOTOGRAPHS FROM DECEMBER 2012

THE ELMS, FITZROY PARK, HIGHGATE, LONDON, N6 6HS

SITE PHOTOGRAPHIC SURVEY DECEMBER 2012 / JANUARY 2013

SECTION 2 - GROUND FLOOR



Alan Power Architects Ltd
13 Needham Road
London W11 2RP

Tel: 020 7229 9375
Email: alan@alanpowerarchitects.co.uk

January 2013



G1



G2



G3



G4



G5



G6



G7



G8



G9



G10



G11



G12



G13



G14



G15



G16



G17



G18



G19



G20



G21



G22



G23



G24



G25



G27



G26



G28



G29



G30



G31



G32



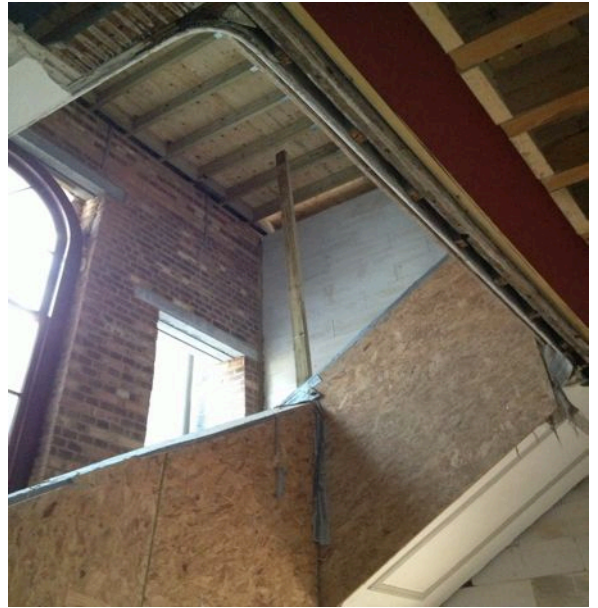
G33



G34



G35



G36



G37



G38



G39



G40



G41



G42



G43



G44



G45



G46



G47



G48



G49



G50



G51