

THE ELMS FITZROY PARK LONDON N6 6HS

DESIGN & ACCESS STATEMENT 2012

APPENDIX II : SITE PHOTOGRAPHS FROM DECEMBER 2012

THE ELMS, FITZROY PARK, HIGHGATE, LONDON, N6 6HS

SITE PHOTOGRAPHIC SURVEY DECEMBER 2012 / JANUARY 2013

SECTION 1 - BASEMENT



Alan Power Architects Ltd
13 Needham Road
London W11 2RP

Tel: 020 7229 9375
Email: alan@alanpowerarchitects.co.uk

January 2013



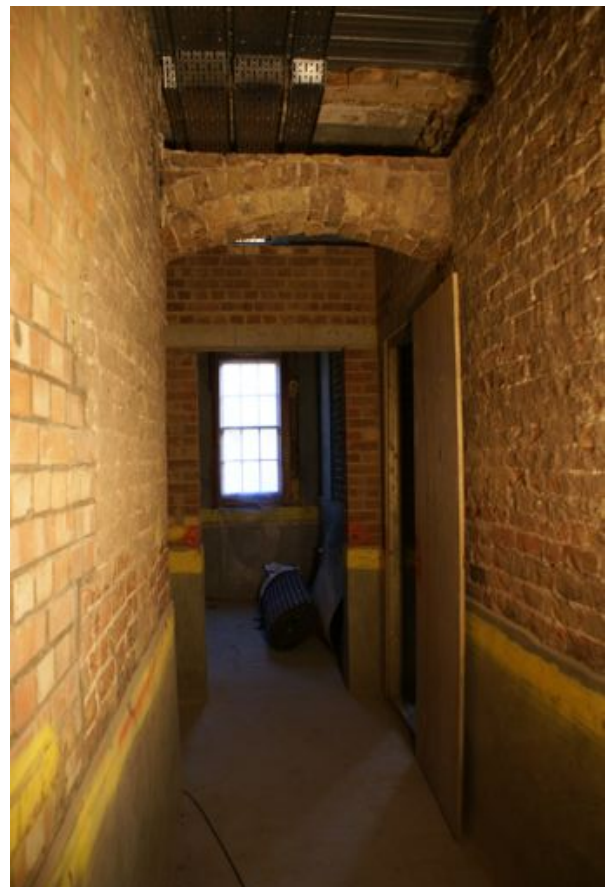
B1



B2



B3



B4



B5



B6



B7



B8



B9



B10



B11



B12



B13



B14



B15



B16



B17



B18



B19



B20