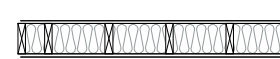


Cupola and supporting steel structure and downpipe removed

New structural glass enclosure onto garden

Structural glass balustrade to protect external terrace at first floor



New fanlised stud walls with insulation batts cut close within frame; clad in lathe and lime based plaster



Cast iron radiators, with thermostatic valves 'Castrads' or similar approved. Size and output to be determined by plumber

NOTE: For full details of all pipe runs, drainage runs, cable management and mechanical ventilation refer to mechanical and electrical sub-contractors drawings

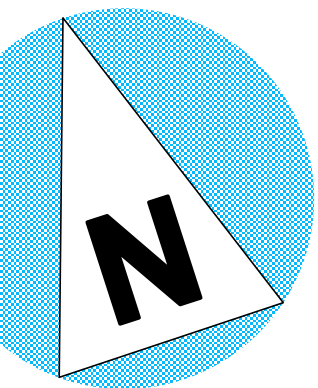
## PLANNING AND LISTED BLDG CONSENT SUBMISSION

NB: Final details of all interior elements and specifications are subject to review by client's consultant historians and may be subject to subsequent design development

Rev B: August 2013 - Planning and Listed Bldg Consent Submission  
Rev A: April 2013 - Notes added re removal of cupola; pre-application submission no. 2

<b>AP</b> (a.) alan power   (ARCHITECTS.) <small>Alan Power Architects Ltd 13 Neesham Road London, W11 2AP Tel: 020 7229 9375 Fax: 020 7221 4172</small>	<b>DRAWING</b> <b>LISTED BUILDING - FIRST FLOOR PLAN</b>	492/109
	<b>PROJECT</b> THE ELMS FITZROY PARK LONDON N6 6HS	<b>Rev.</b> <b>B</b>
	<b>CLIENT</b> ELM INTERNATIONAL LTD	<b>Scale</b> 1:50 @ A1 <b>Date</b> Jan 2012
		<b>Drawn</b>

DO NOT SCALE FROM THIS DRAWING. ALL DIMENSIONS TO BE CHECKED ON SITE



**A1** 1:50 @ A1  
1:100 @ A3

AP(a) COPYRIGHT RESERVED