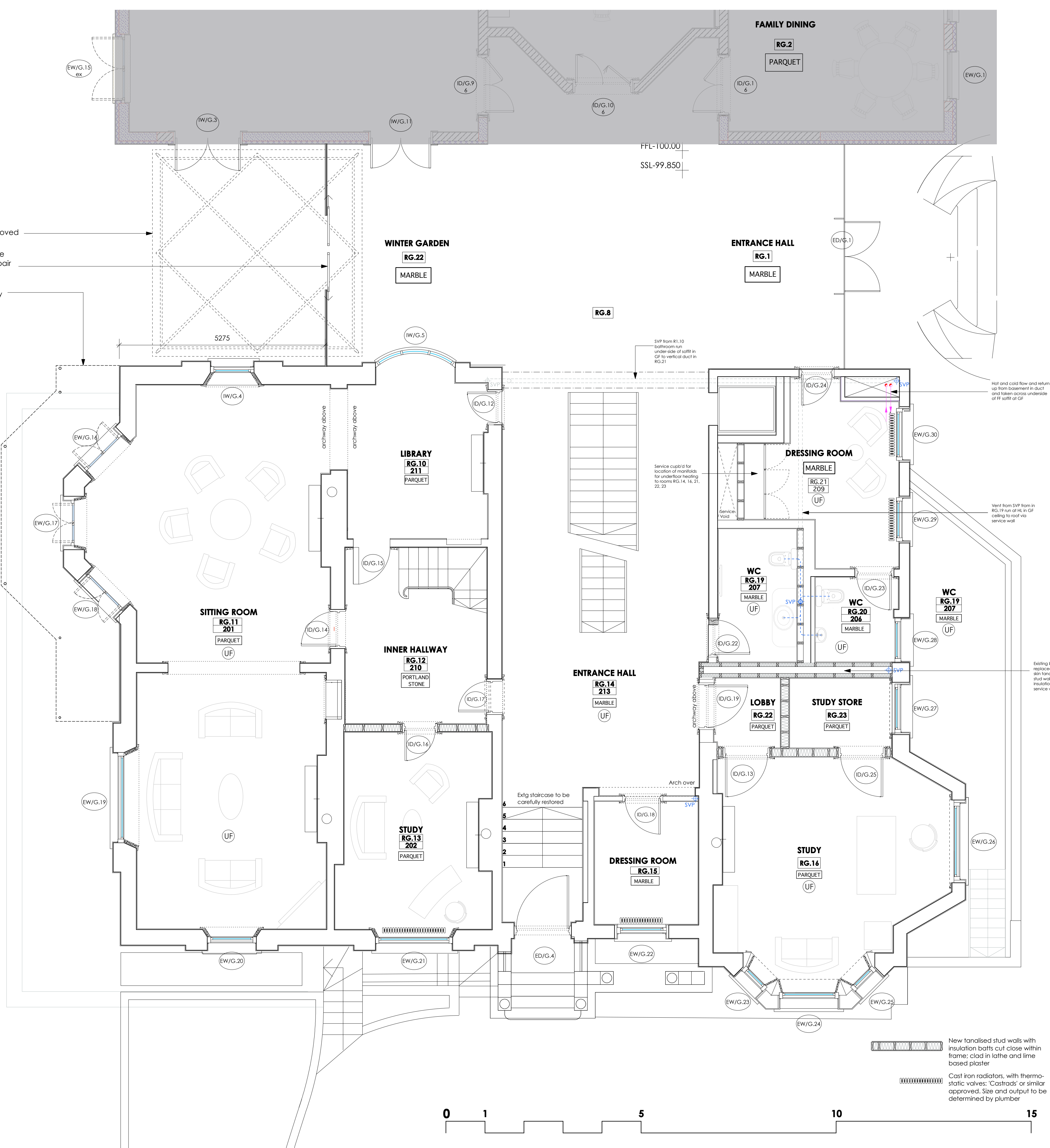


Cupola and supporting steel structure and downpipe removed

New structural glass enclosure onto garden, incorporating pair of sliding doors

Metal canopy to be restored by specialist metal conservator



NOTE: For full details of all pipe runs, drainage runs, cable management and mechanical ventilation refer to mechanical and electrical sub-contractors drawings

PLANNING AND LISTED BLDG CONSENT SUBMISSION

NB: Final details of all interior elements and specifications are subject to review by client's consultant historians and may be subject to subsequent design development

Rev B: August 2013 - Planning and Listed Bldg Consent Submission
Rev A: April 2013 - Notes added re removal of cupola; pre-application submission no. 2

AP (a.) alan power (ARCHITECTS.) <small>Alan Power Architects Ltd 13 Needham Road London, W11 3RP Tel: 020 7229 9375 Fax: 020 7221 4172</small>	DRAWING	LISTED BUILDING - GROUND FLOOR PLAN	DRWG. N°. 492/107
	PROJECT	THE ELMS FITZROY PARK LONDON N6 6HS	Rev. B
	CLIENT	ELM INTERNATIONAL Ltd.	Scale 1:50 @ A1 Date Jan. 2012 Drawn

DO NOT SCALE FROM THIS DRAWING. ALL DIMENSIONS TO BE CHECKED ON SITE AND DISCREPANCIES REPORTED TO ARCHITECT