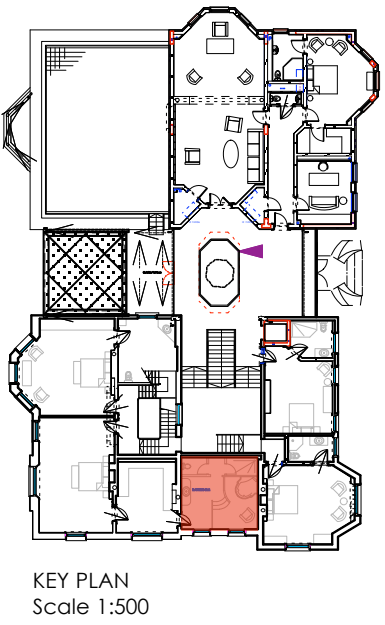


REFLECTIVE CEILING PLAN
Scale 1:20



- NOTE:**
- Schedule of itemised timber components taken from Luard Conservation Ltd Report - Spreadsheet of Timber Elements. Items recommended for disposal omitted from schedules on drawings.
 - SPAB approved contractor to attempt to reassemble 'usable' items on site into their original configurations.
 - Once attempted, review feasibility of reusing elements. Confirm renewal of unsound elements with Conservation Area Officer prior to carrying out work.
 - Where items are assessed as 'borderline' or 'unusable' but are recommended for review, care is to be taken to record any useful patterns, details, profiles or other noteworthy features. Once recorded, the Conservation Area Officer is to be alerted for a final inspection before disposing of the items.
 - All fit out drawings subject to Development Control and Building Control Approval. M&E (including final locations of power, lighting and switches) to be adjusted once subcontractor (Franklins) drawings have been signed off by client.
 - Final location and specification of light/dimmer switches, lighting and power sockets to be confirmed by client.

NOTE: For full details of all pipe runs, drainage runs, cable management and mechanical ventilation refer to mechanical and electrical sub-contractors drawings

PLANNING AND LISTED BLDG CONSENT SUBMISSION

NB: Final details of all interior elements and specifications are subject to review by client's consultant historians and may be subject to subsequent design development

Rev A: August 2013 - Planning and Listed Bldg Consent Submission
Rev B: August 2013 - Electrics up-dated

AP (a.) alan power (ARCHITECTS.) <small>13, Needham Road, London, W11 2RP Tel: 020 7229 9375 Fax: 020 7221 4172</small>	DRAWING ROOM NO: R1.15	DRWG. N°. 492/R1.15
	PROJECT THE ELMS FITZROY PARK, N6 6HS	Rev. B
	CLIENT ELM INTERNATIONAL Ltd.	Scale As noted
		Date Dec 2012 Drawn

DO NOT SCALE FROM THIS DRAWING. ALL DIMENSIONS TO BE CHECKED ON SITE AND DISCREPANCIES REPORTED TO ARCHITECT