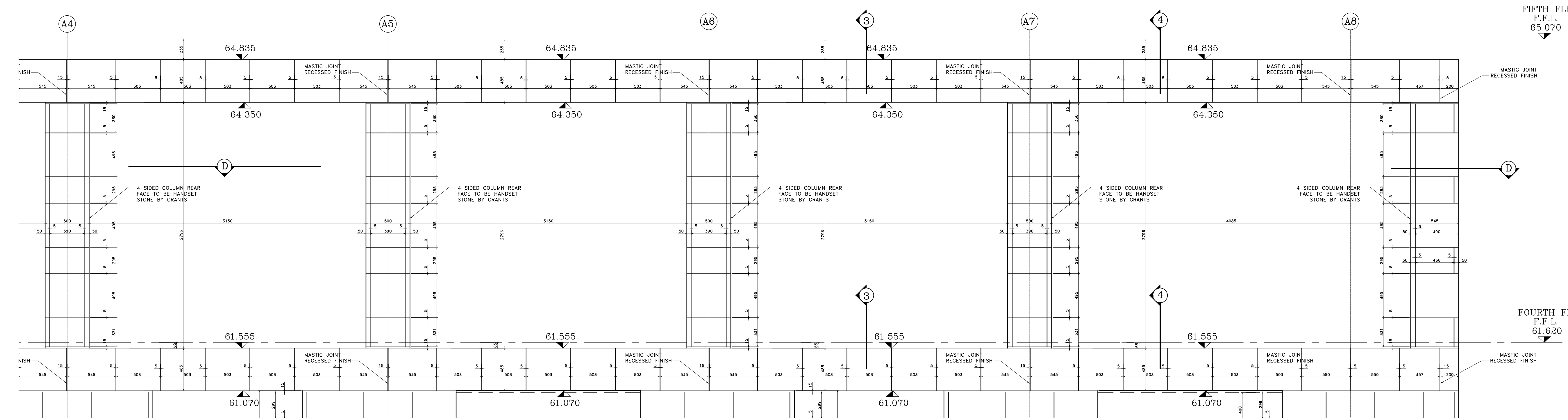
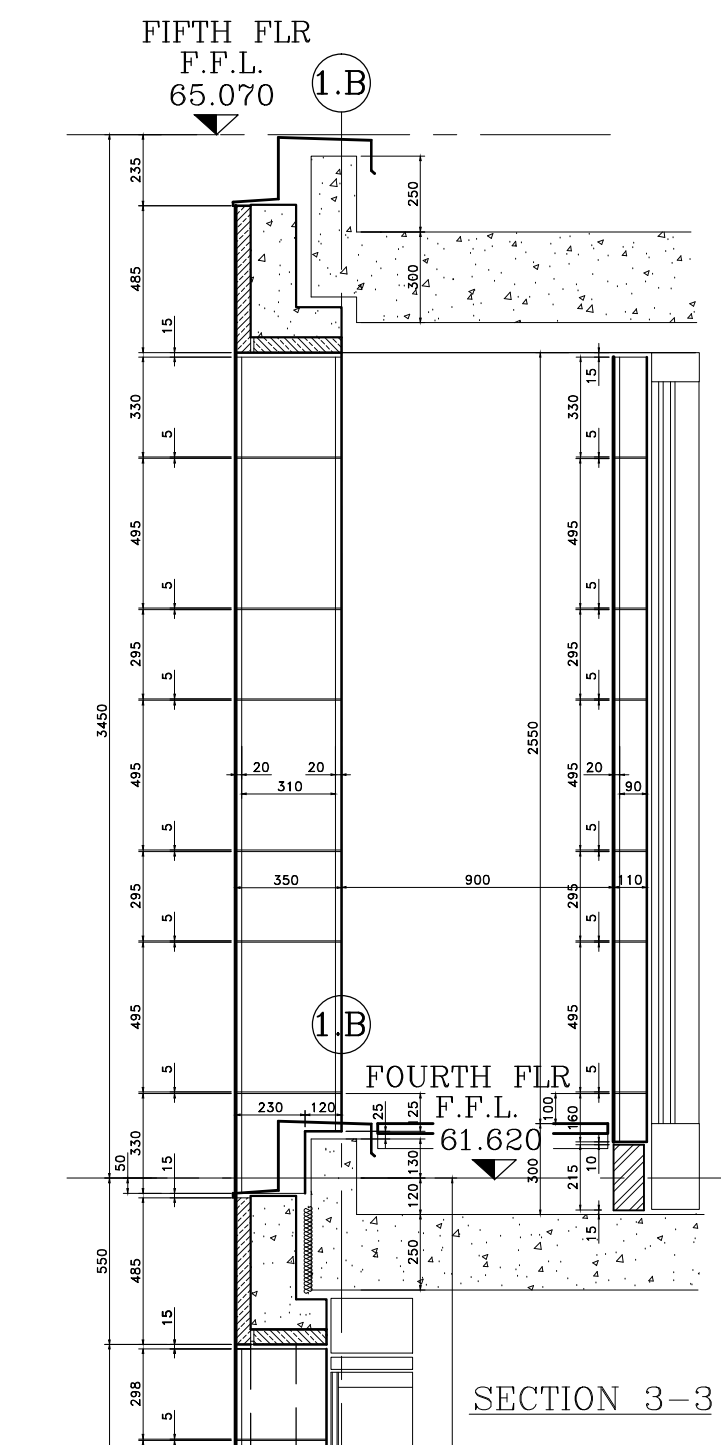


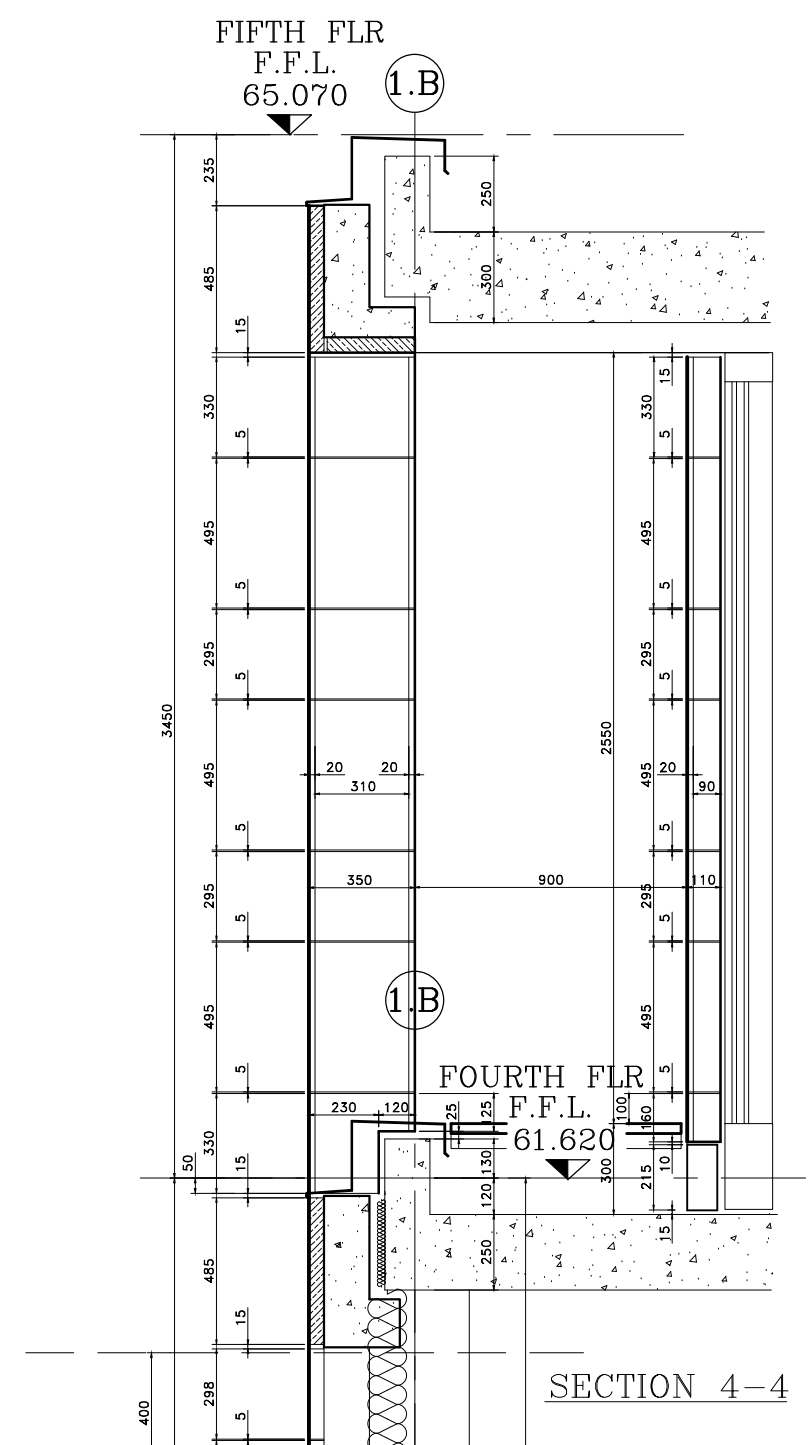
ELEVATION E-E INNER PILASTERS



CONTINUED ON DRAWING 3205-A-GA-1048



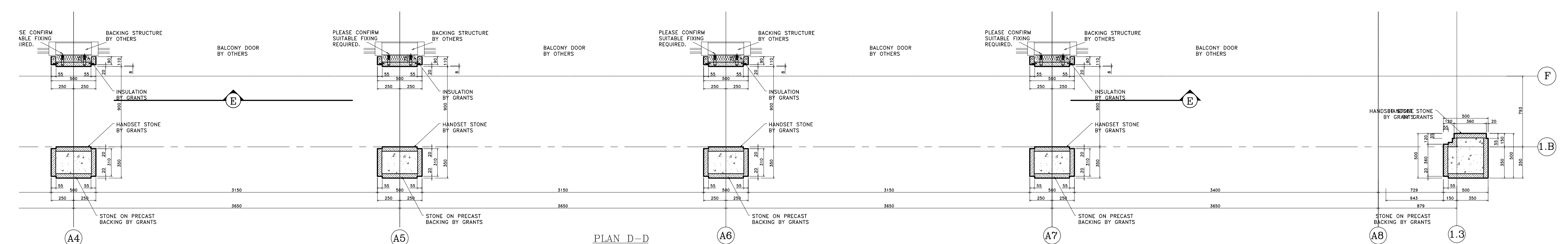
SECTION 3-3



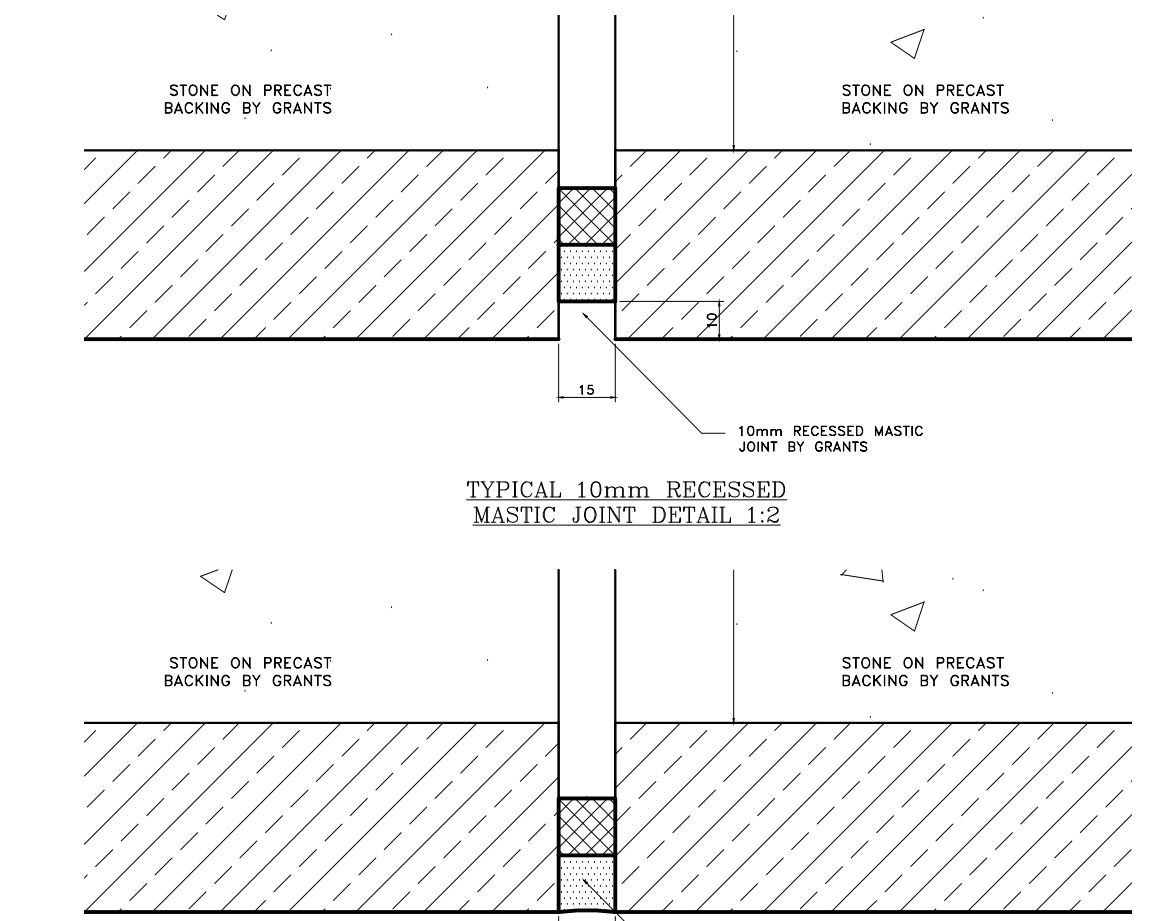
SECTION 4-4

CONTINUED ON DRAWING 3205-A-GA-1053

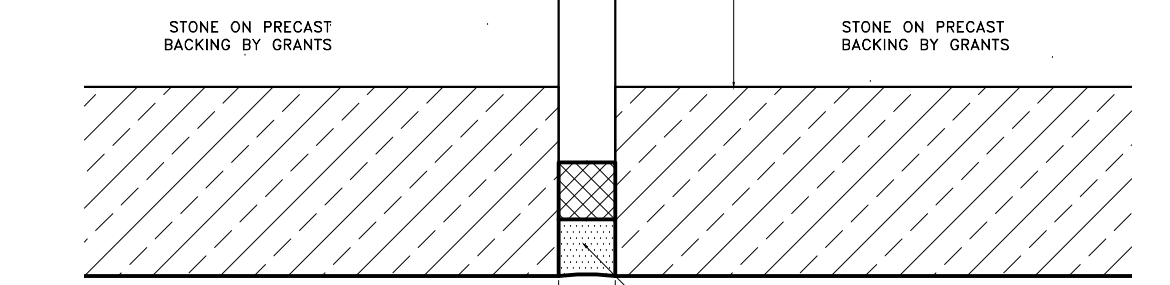
CONTINUED ON DRAWING 3205-A-GA-1052



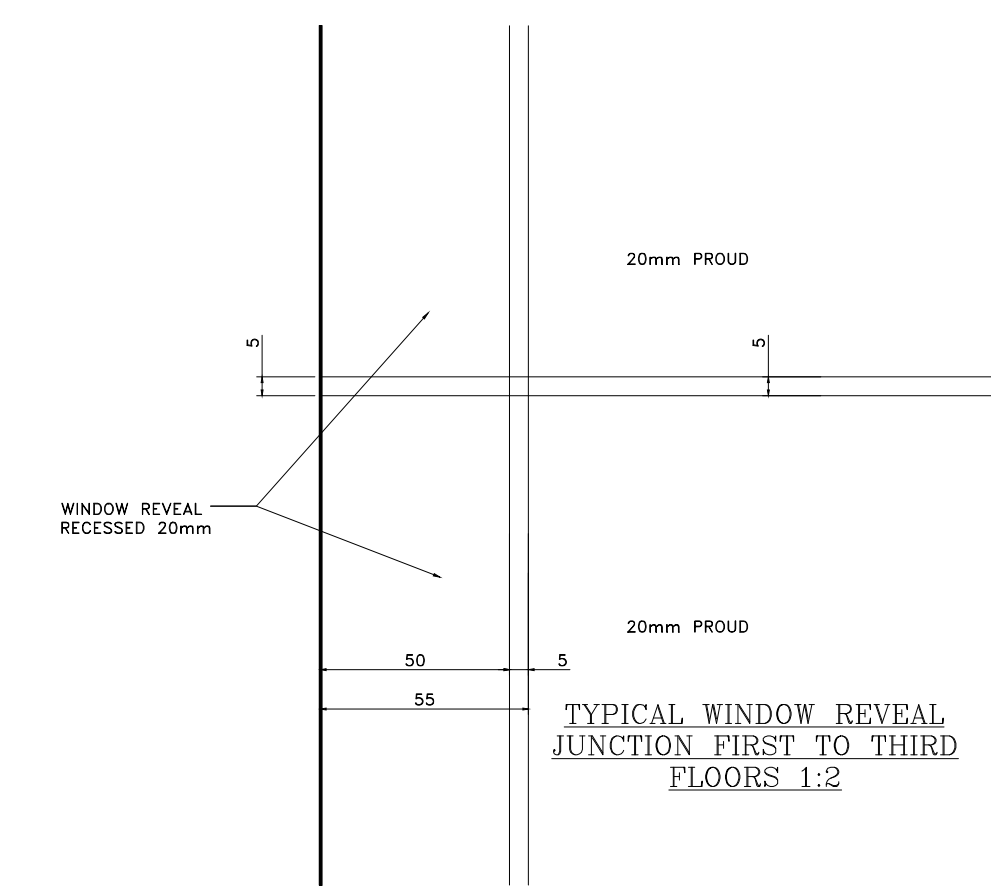
PLAN D-D



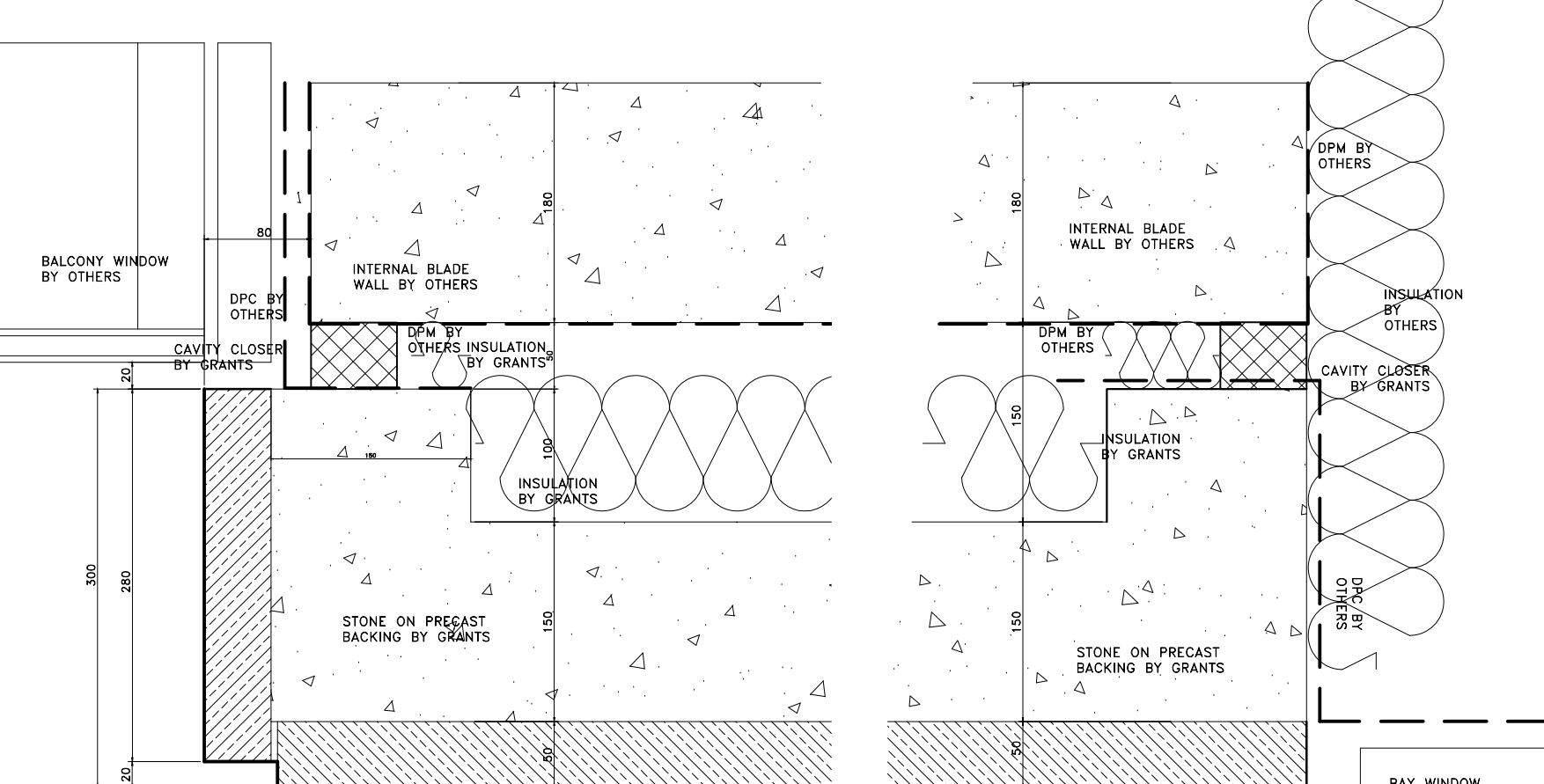
TYPICAL 10mm RECESSED MASTIC JOINT DETAIL 1.2



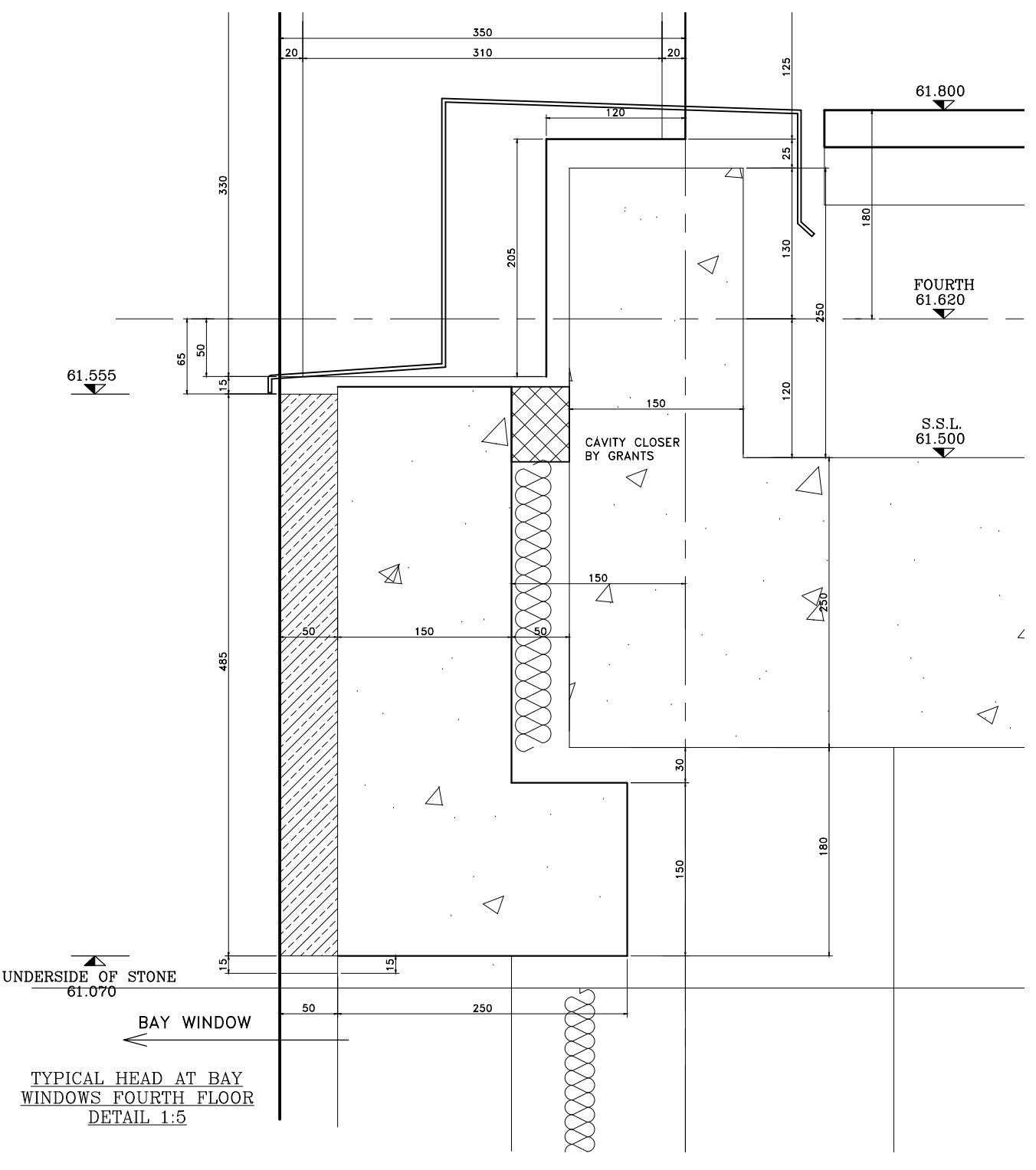
TYPICAL FLUSHED FINISHED MASTIC JOINT DETAIL 1.2



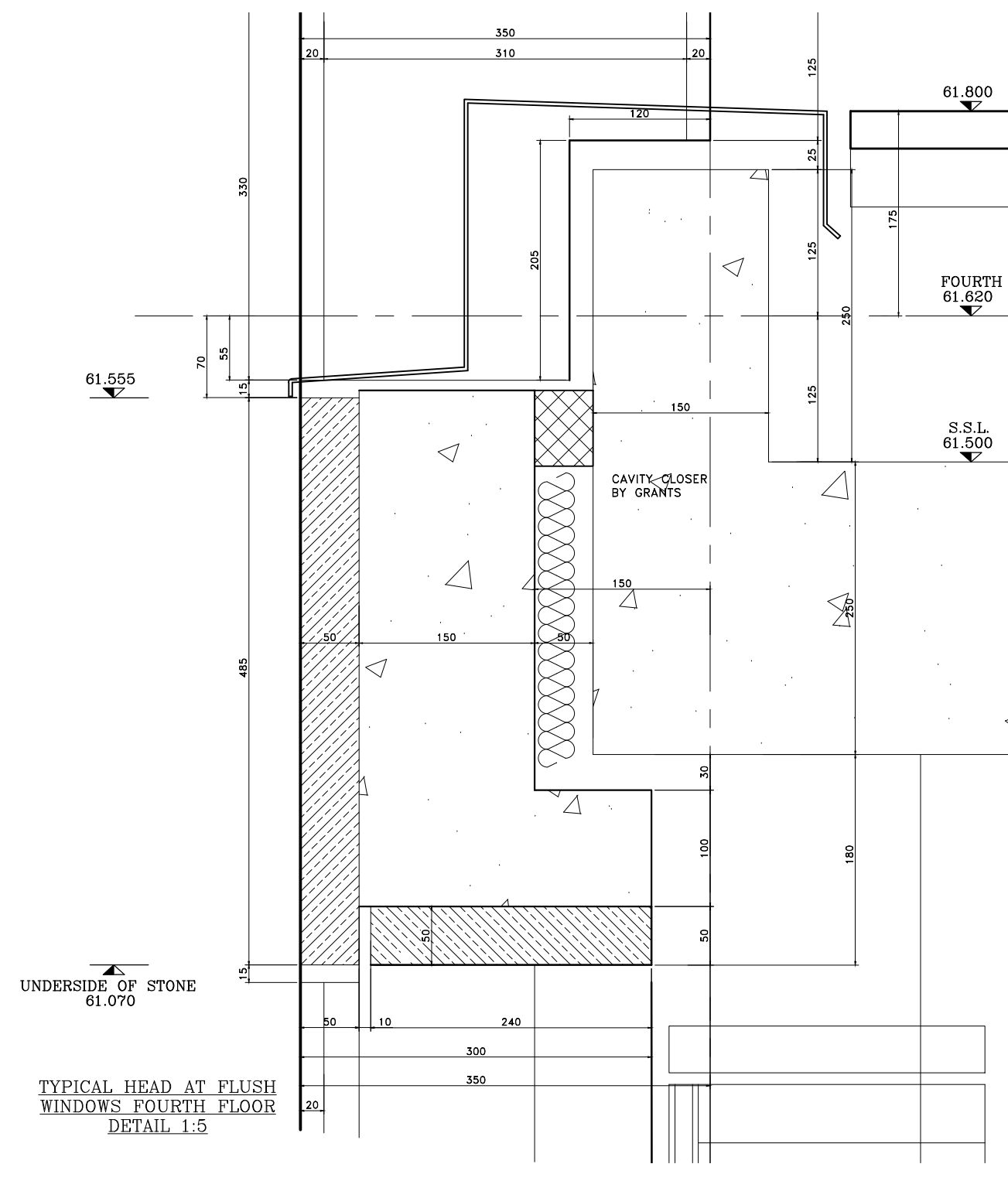
TYPICAL WINDOW REVEAL JUNCTION FIRST TO THIRD FLOORS 1.2



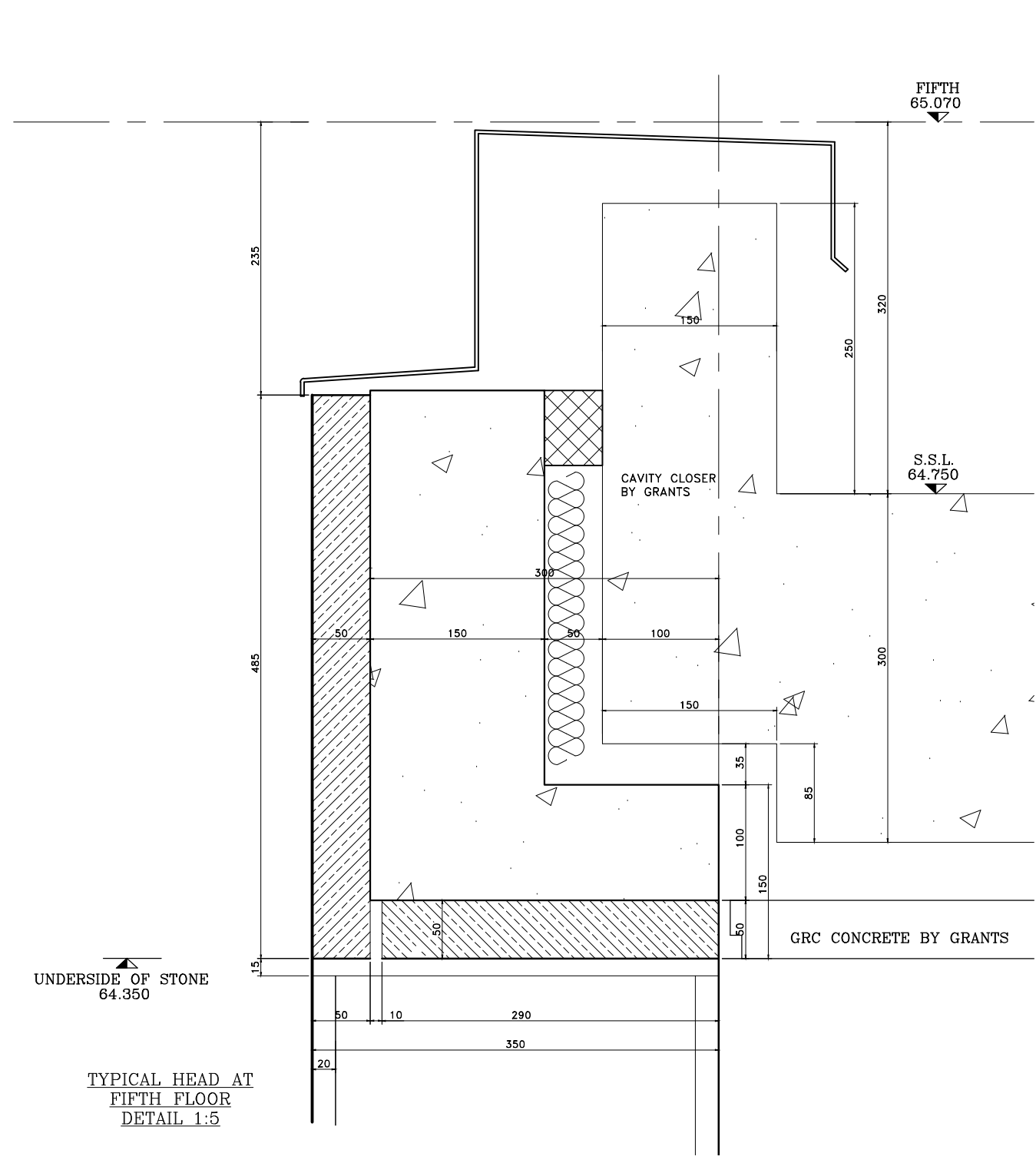
TYPICAL WINDOW REVEAL DETAIL FIRST TO FOURTH FLOORS 1.5



TYPICAL HEAD AT BAY WINDOWS FOURTH FLOOR DETAIL 1.3



TYPICAL HEAD AT FLUSH WINDOWS FOURTH FLOOR DETAIL 1.3



TYPICAL HEAD AT FIFTH FLOOR DETAIL 1.5

Notes:
 STONE TYPE TO RUSTICATED STONEMWORK TO BE PORTLAND BOWERS ROACH SAMPLE AND RANGE TO BE APPROVED.
 STONE TYPE TO NON-RUSTICATED STONEMWORK TO BE PORTLAND FANCY BEACH WHITBED SAMPLE AND RANGE TO BE APPROVED.
 STONE TYPE TO PLINTH STONEMWORK TO BE GRANITE (SAMPLE TO BE APPROVED).
 STANDARD JOINTS TO BE 5mm FULLY POINTED TO APPROVED SAMPLE.
 ALL MASTIC JOINTS TO MATCH APPROVED SAMPLES.
 ALL FIXING RESTRAINTS TO BE STAINLESS STEEL GRADE 304 AND TO BE ISOLATED FROM THE MILD STEEL TO PREVENT BIMETALLIC REACTION.
 ALL STONES SHOULD HAVE NUMBERS MARKED ON UNSEEN FACES AND BE PROVIDED AS PER THE CUTTING SCHEDULES.
 INSULATION TO BE KINGSPAN TWISS.
 ALL WATERPROOFING DPM BY OTHERS.

CDM Regulations
 Design Risk Assessment
 The size and shape of individual stones for this project have been designed to satisfy the overall design requirements for the building. All persons handling and fixing such stones should be aware that there are risks associated with this type of work that cannot be designed out.
 RISK: INJURY
 Risk Reduction:
 Fixers must be suitably experienced in the handling of stones and employ lifting methods appropriate to the size and shape of that component. Access and platforms must be to the standard required by current legislation.
 Rubbers must always be made to COSSH information for the materials being used.

Rev	Description	Date
A	Updated to Architects comments.	24.07.13

This drawing is the property of Grants and is to be used only for the contracted parties. Grants are not responsible for any errors occurring through the use of this drawing by other parties. Do not scale drawings.



Project:
ST EDMUNDS TERRACE LONDON
 Architect:
SQUIRE AND PARTNERS
 Contractor:
MACE
 Drawing Title:
BLOCK 1 EAST ELEVATION RIGHT HAND END FOURTH TO FIFTH FLOOR
 Drawn By: **JM** Checked By: **SC** Scale: **1:25 @ A0** Date: **10/06/13** Revision: **A**

Drawing No:
3205-A-GA-1054