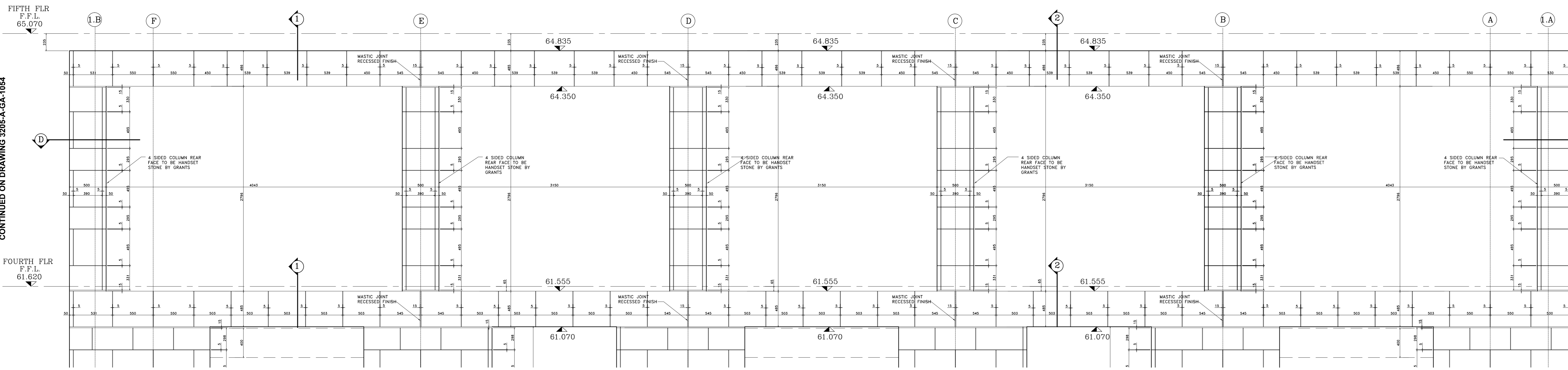
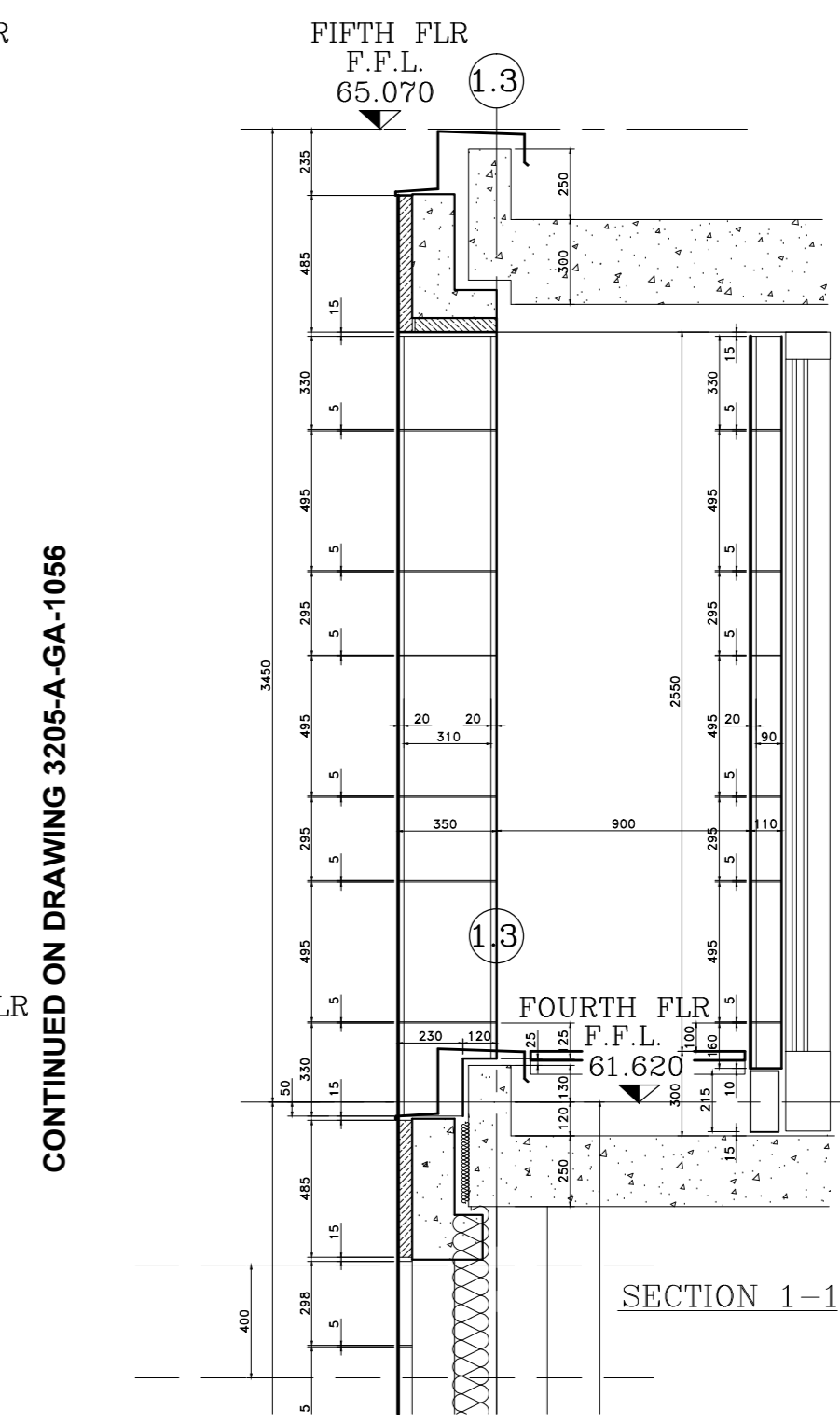


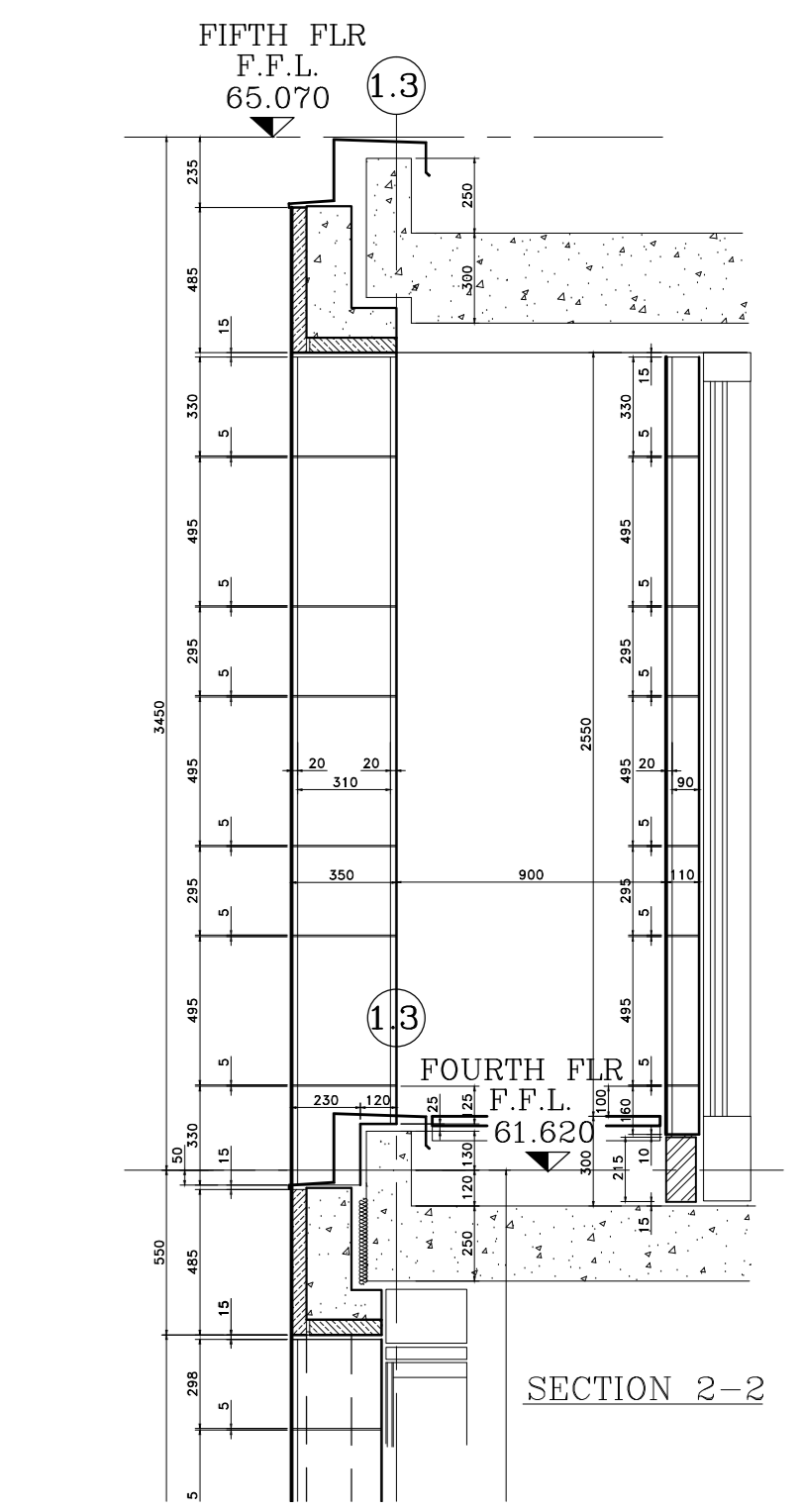
ELEVATION E-E INNER PILASTERS



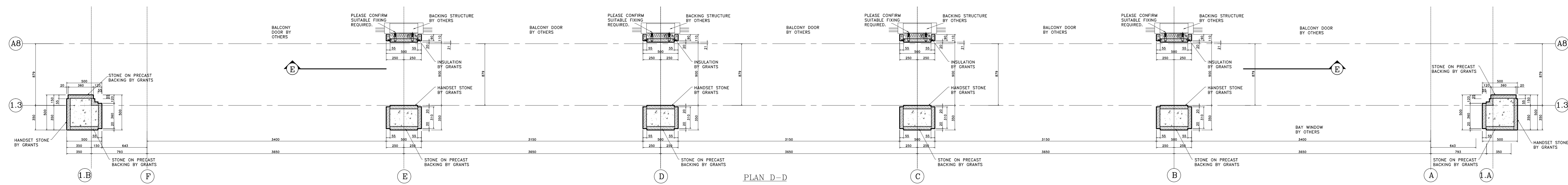
CONTINUED ON DRAWING 3205-A-GA-1049



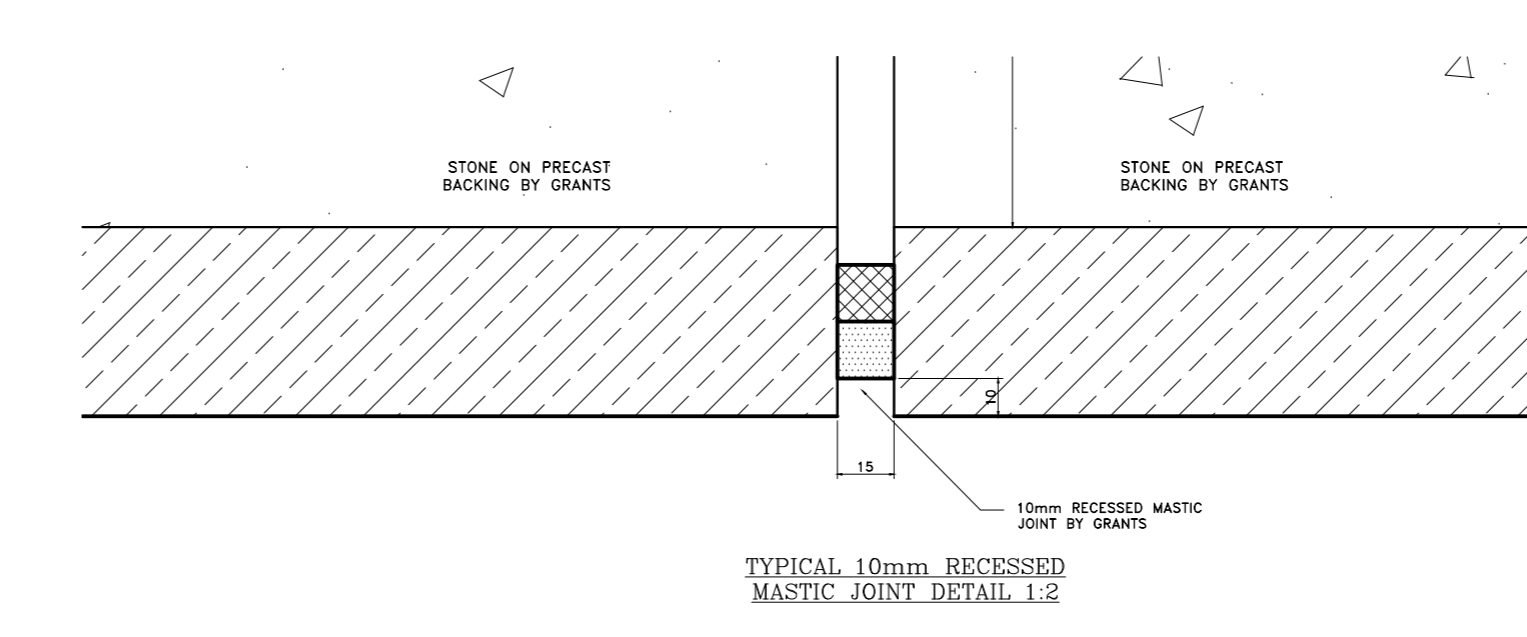
SECTION 1-1



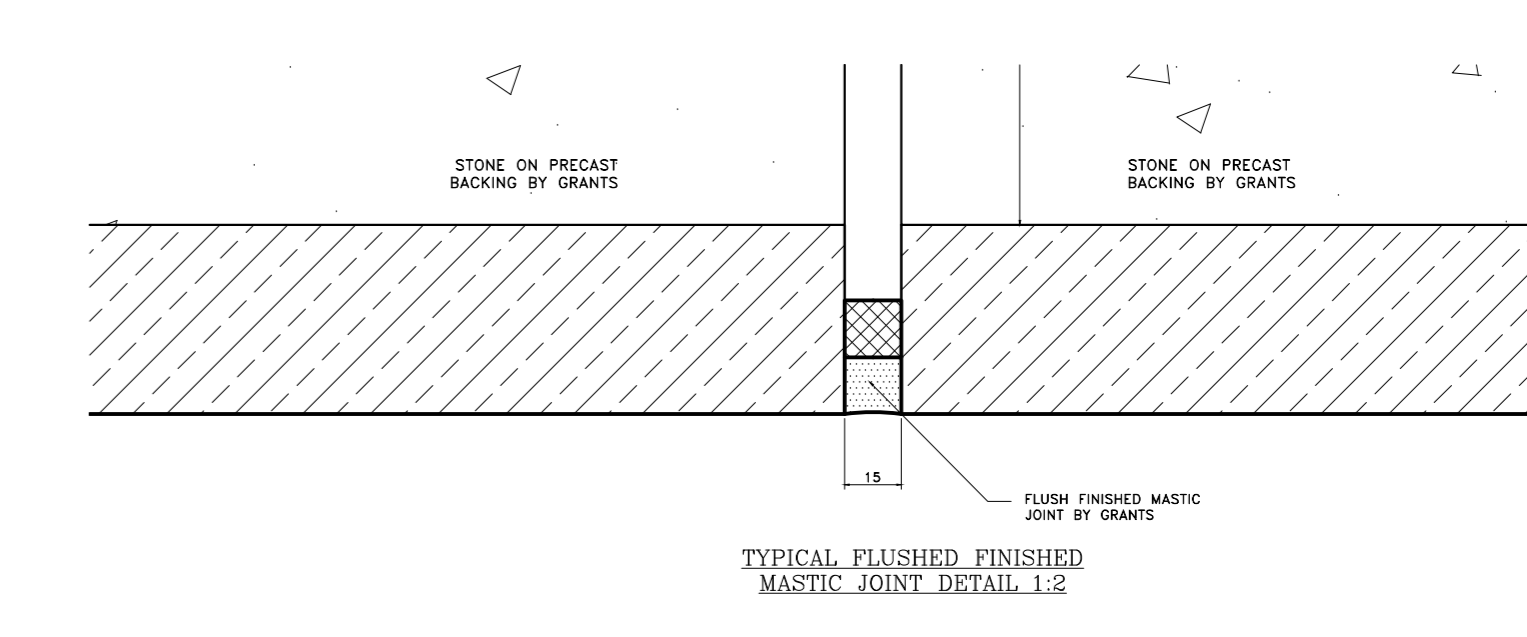
SECTION 2-2



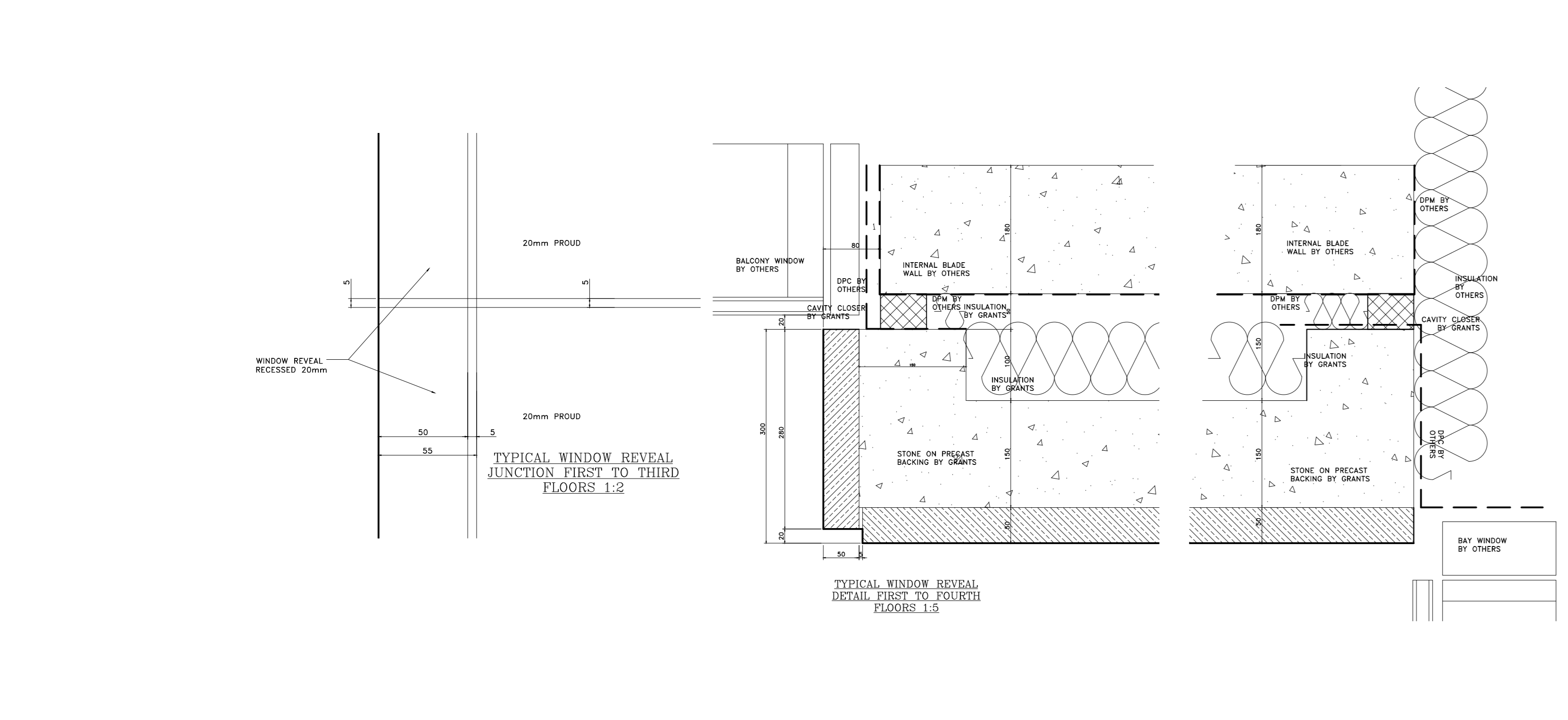
PLAN D-D



TYPICAL 10mm RECESSED MASTIC JOINT DETAIL 1.2

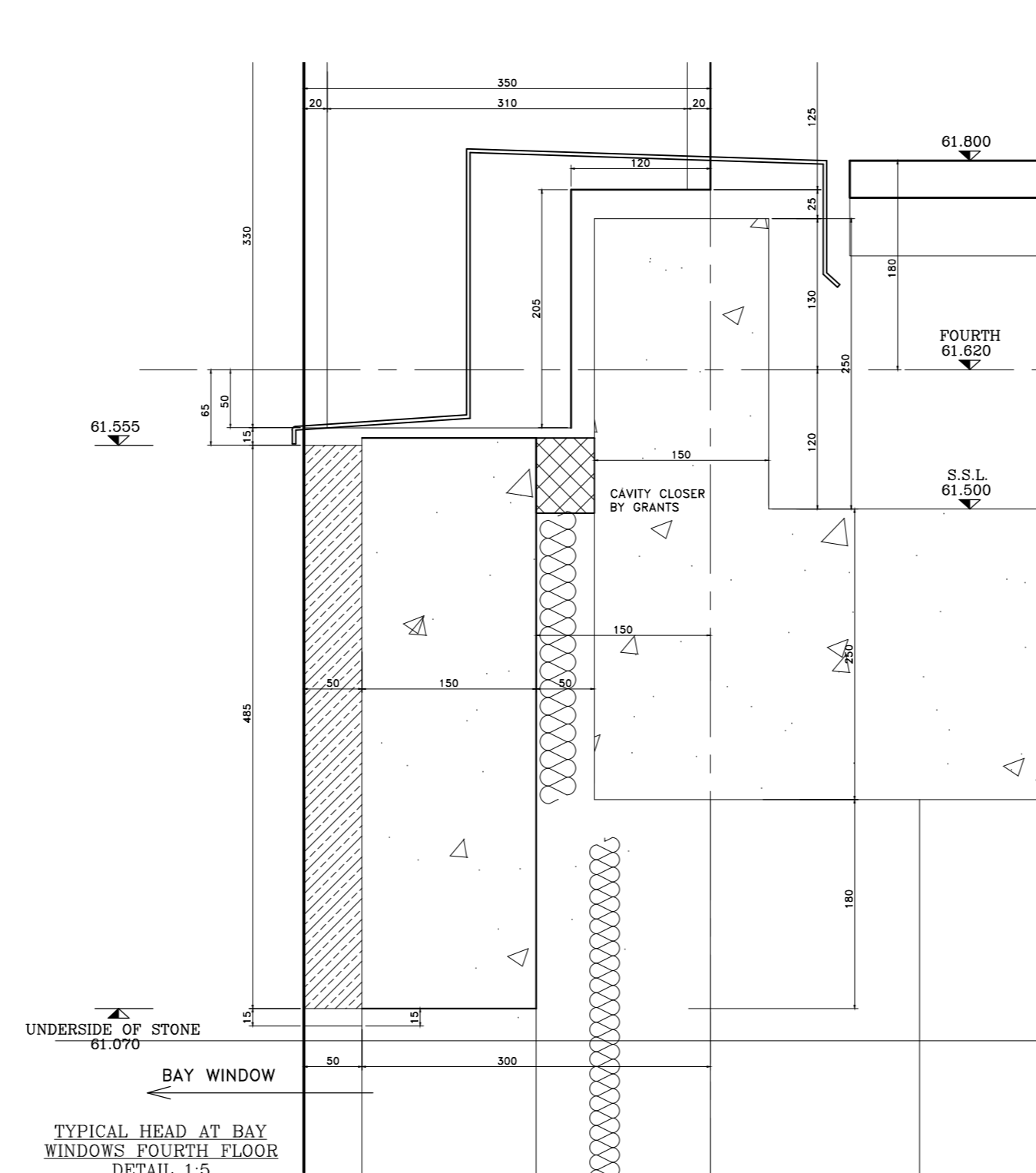


TYPICAL FLUSHED FINISHED MASTIC JOINT DETAIL 1.2

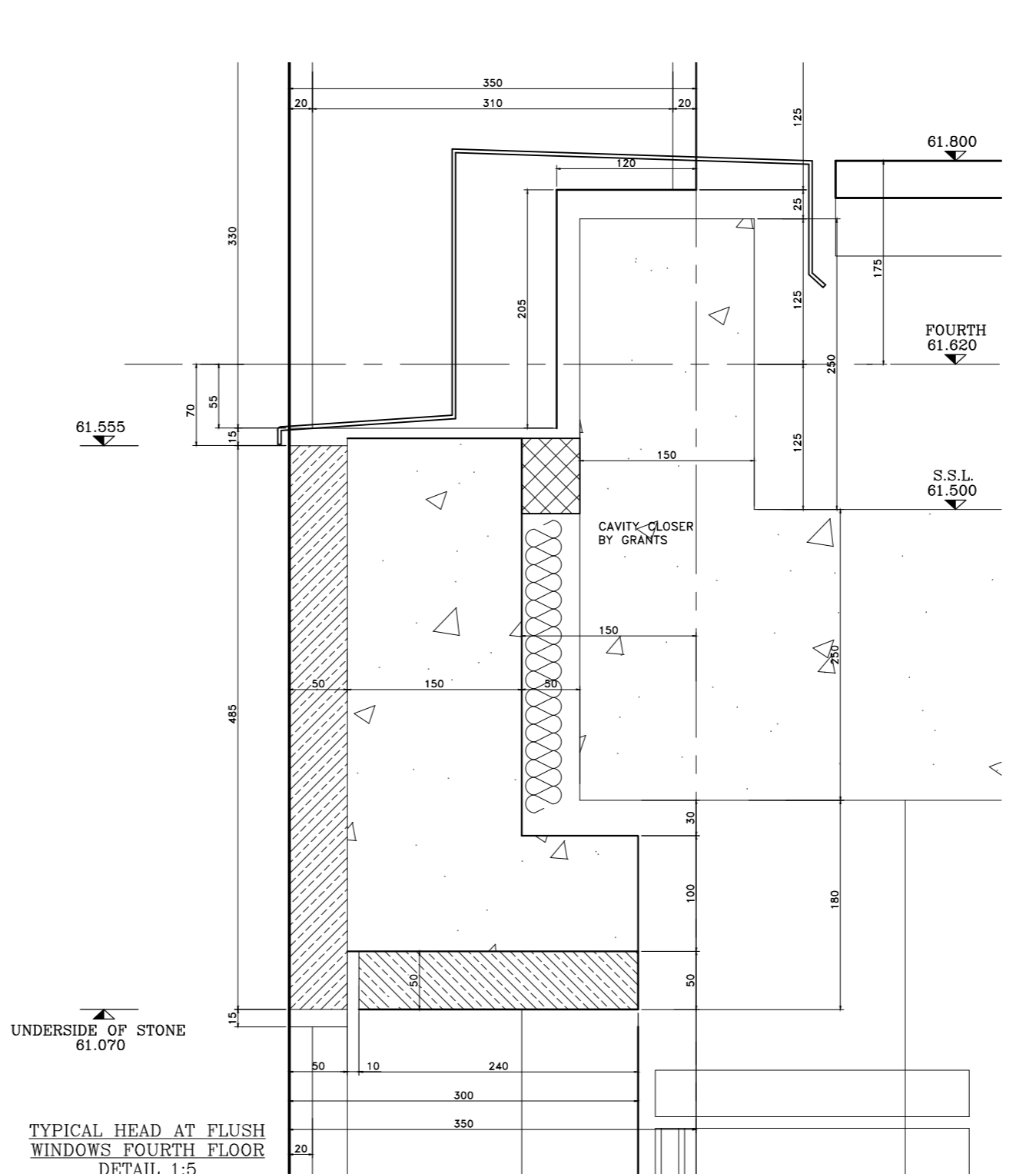


TYPICAL WINDOW REVEAL DETAIL FIRST TO FOURTH FLOORS 1.2

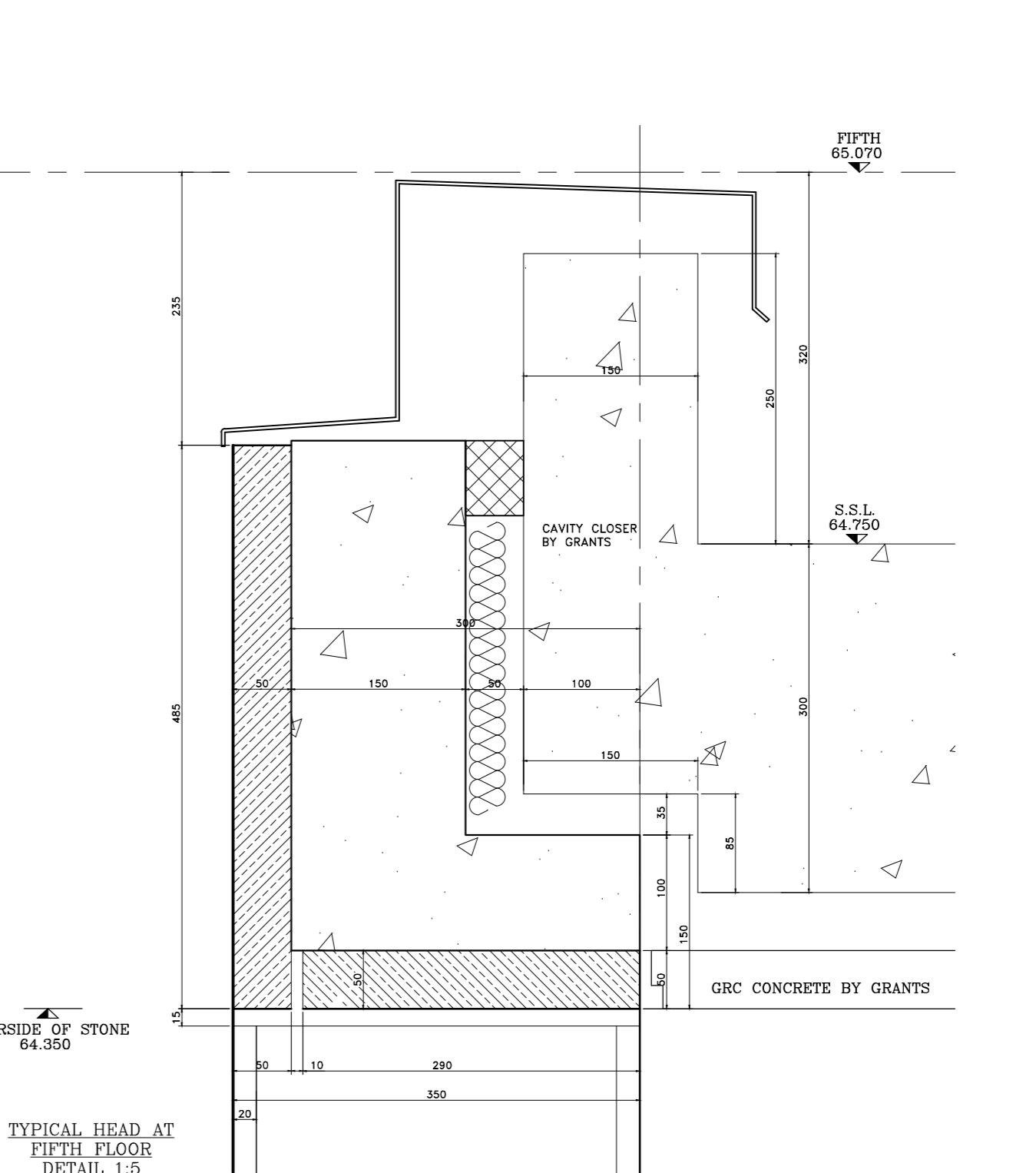
TYPICAL WINDOW REVEAL DETAIL FIRST TO FOURTH FLOORS 1.3



TYPICAL HEAD AT BAY WINDOW, FOURTH FLOOR DETAIL 1.0



TYPICAL HEAD AT FLUSH WINDOW, FOURTH FLOOR DETAIL 1.5



TYPICAL HEAD AT FIFTH FLOOR DETAIL 1.5

**Notes:**  
 STONE TYPE TO RUSTICATED STONEMASONRY TO BE PORTLAND BOWERS ROACH SAMPLE AND RANGE TO BE APPROVED.  
 STONE TYPE TO NON RUSTICATED STONEMASONRY TO BE PORTLAND FANCY BEACH WHITEB SAND RANGE TO BE APPROVED.  
 STONE TYPE TO PLINTH STONEMASONRY TO BE GRANITE (SAMPLE TO BE APPROVED).  
 STANDARD JOINTS TO BE 5mm FULLY POINTED TO APPROVED SAMPLE.  
 ALL MASTIC JOINTS TO MATCH APPROVED SAMPLES.  
 ALL FIXING RESTRAINTS TO BE STAINLESS STEEL GRADE 304 AND TO BE ISOLATED FROM THE MILD STEEL TO PREVENT BIMETALLIC REACTION.  
 ALL STONES SHOULD HAVE NUMBERS MARKED ON UNSEEN FACES AND BE PROVIDED AS PER THE CUTTING SCHEDULES.  
 INSULATION TO BE KINGSPAN TWISS.  
 ALL WATERPROOFING DPM BY OTHERS.

CDM Regulations  
 Design Risk Assessment:  
 The size and shape of individual stones for this project have been designed to satisfy the overall design requirements for the building. All persons handling and installing such stones should be aware that there are risks associated with this type of work that cannot be designed out.  
 RISK: INJURY  
 Risk Reduction:  
 Fixers must be suitably experienced in the handling of stones and employ lifting methods appropriate to the size and shape of that component. Access and platforms must be to the standard required by current legislation.  
 Rubbers must always be made to COSHH information for the materials being used.

Rev	Reason For Issue	Date
A	Updated to Architects comments.	25.07.13

This drawing is the property of Grants and is to be used only for the contracted project.  
 Grants or its agents shall not be held responsible for any errors occurring through the use of this drawing by other parties.  
 © 2013 Grants  
 GRANTS OF SHOREDITCH LTD  
 GRANTS HOUSE, PROSPECT WAY  
 NUTFIELD, BREKENTWOOD  
 ESSEX, CM13 1XD  
 0203 222222 Fax: 020 7933 9800  
 E: info@grantsmasonry.com

Project:  
**ST EDMUNDS TERRACE LONDON**  
 Architect:  
**SQUIRE AND PARTNERS**  
 Contractor:  
**MACE**  
 Drawing Title:  
**BLOCK 1 NORTH ELEVATION FOURTH TO FIFTH FLOOR**  
 Drawn By: **SM** Checked By: **SM** Scale: **1:25@A0** Date: **21/06/13** Revision: **A**  
**3205-A-GA-1052**