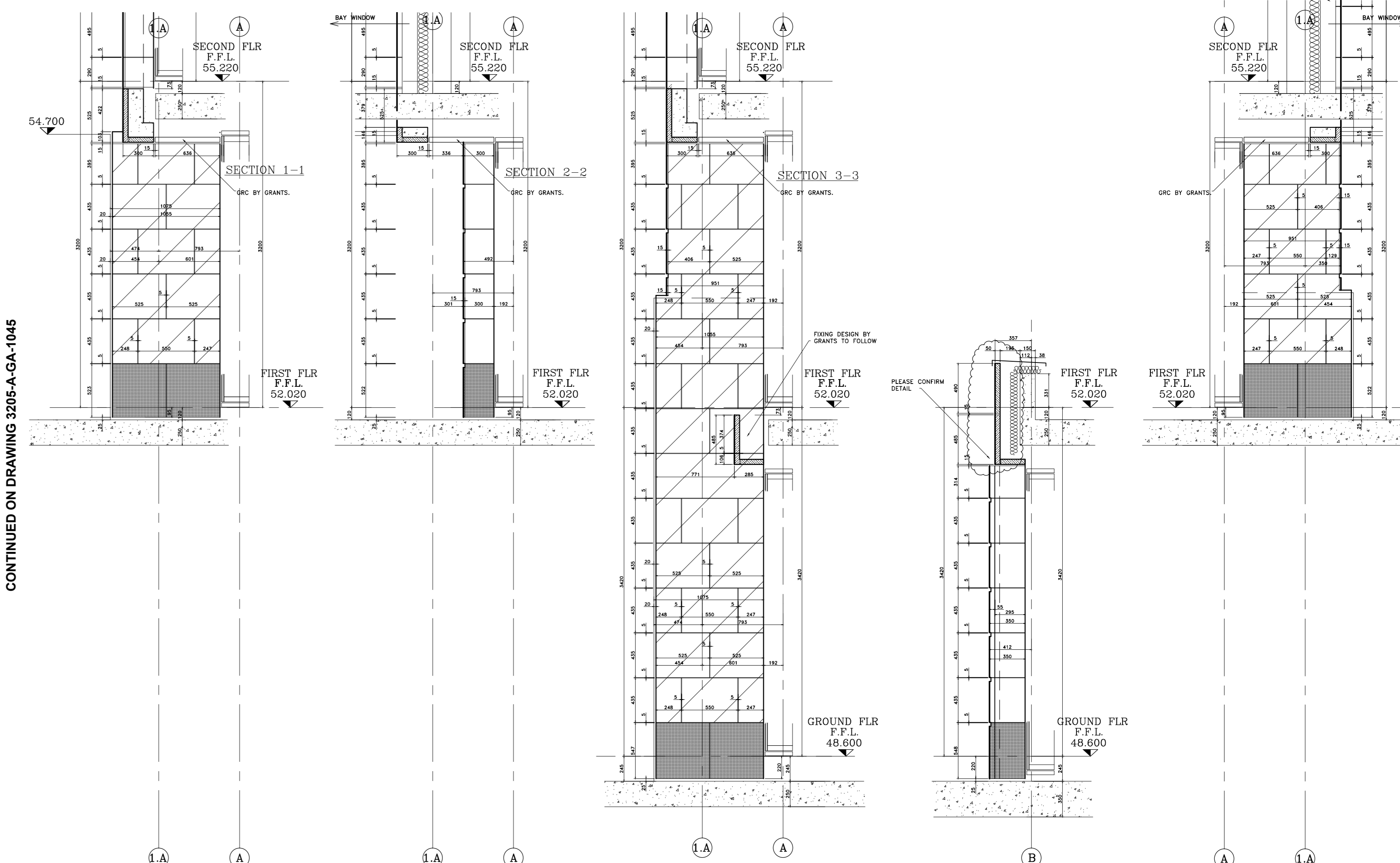
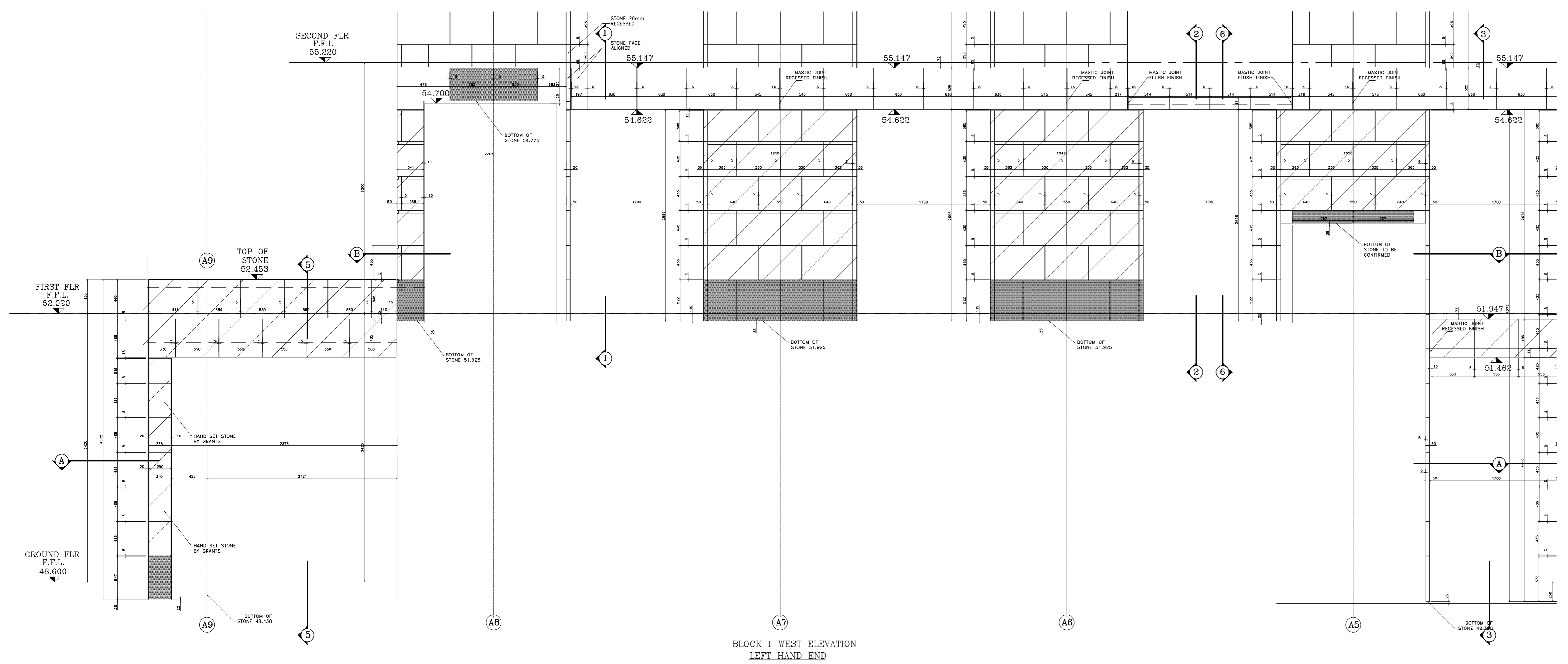
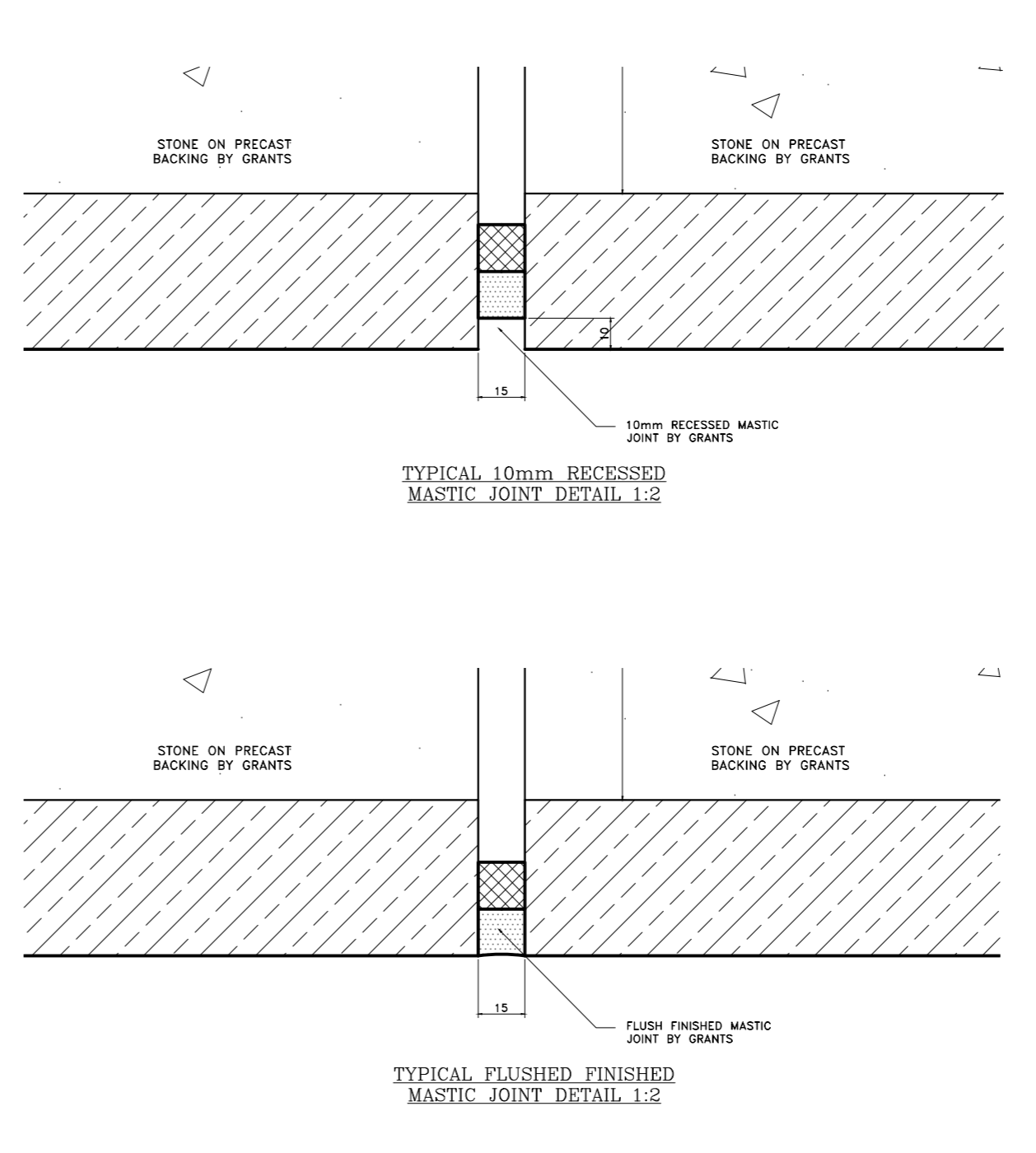
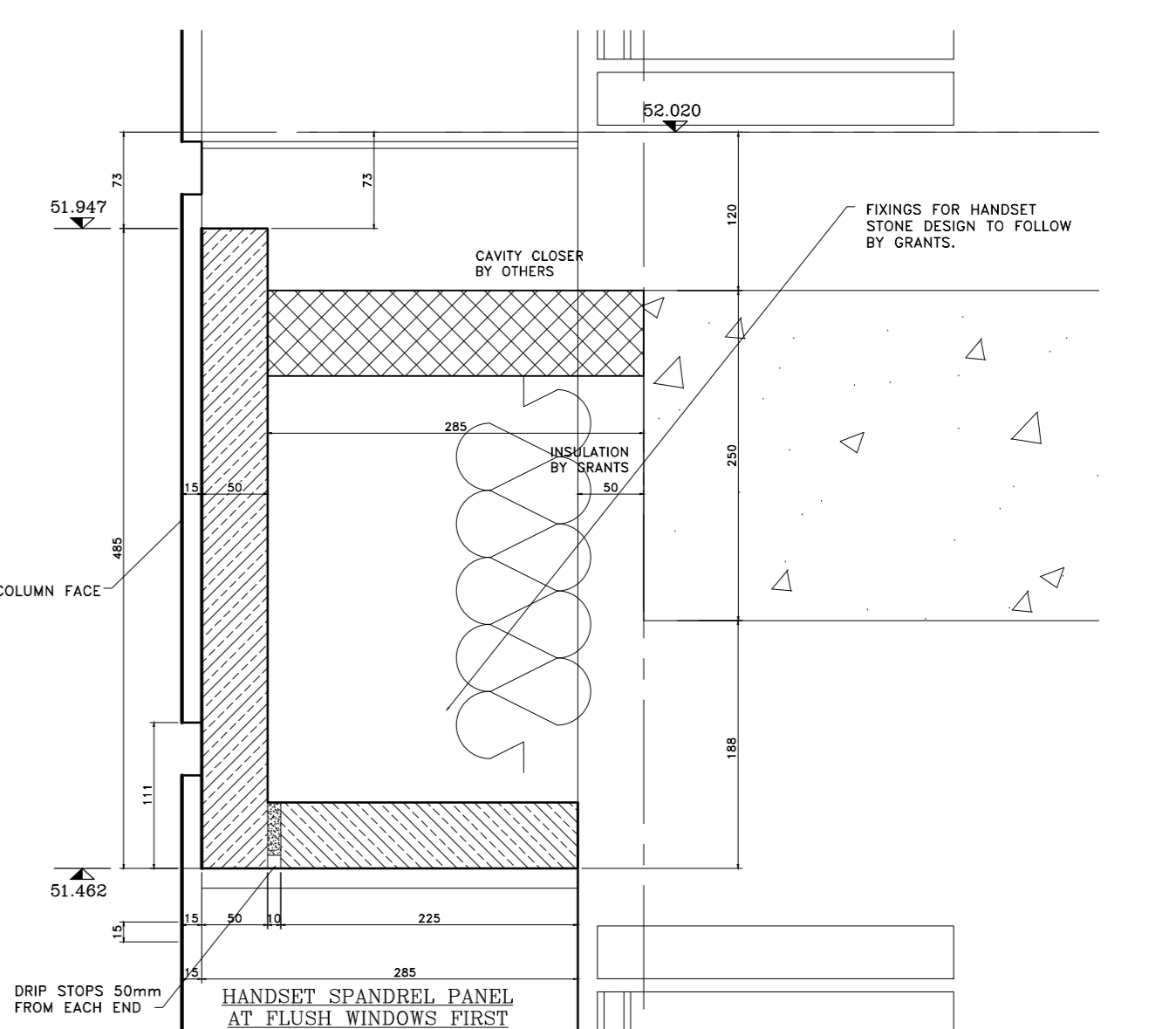
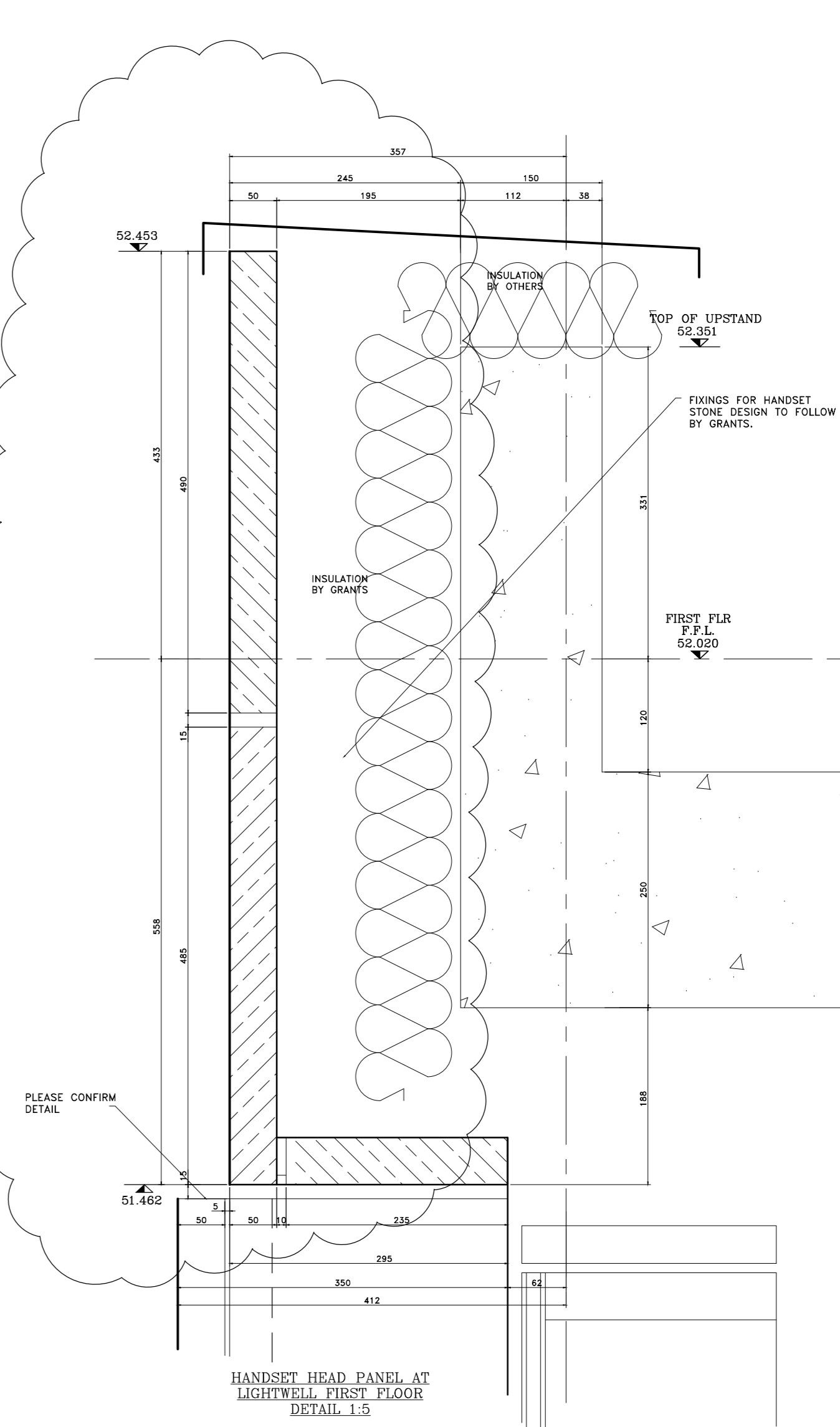
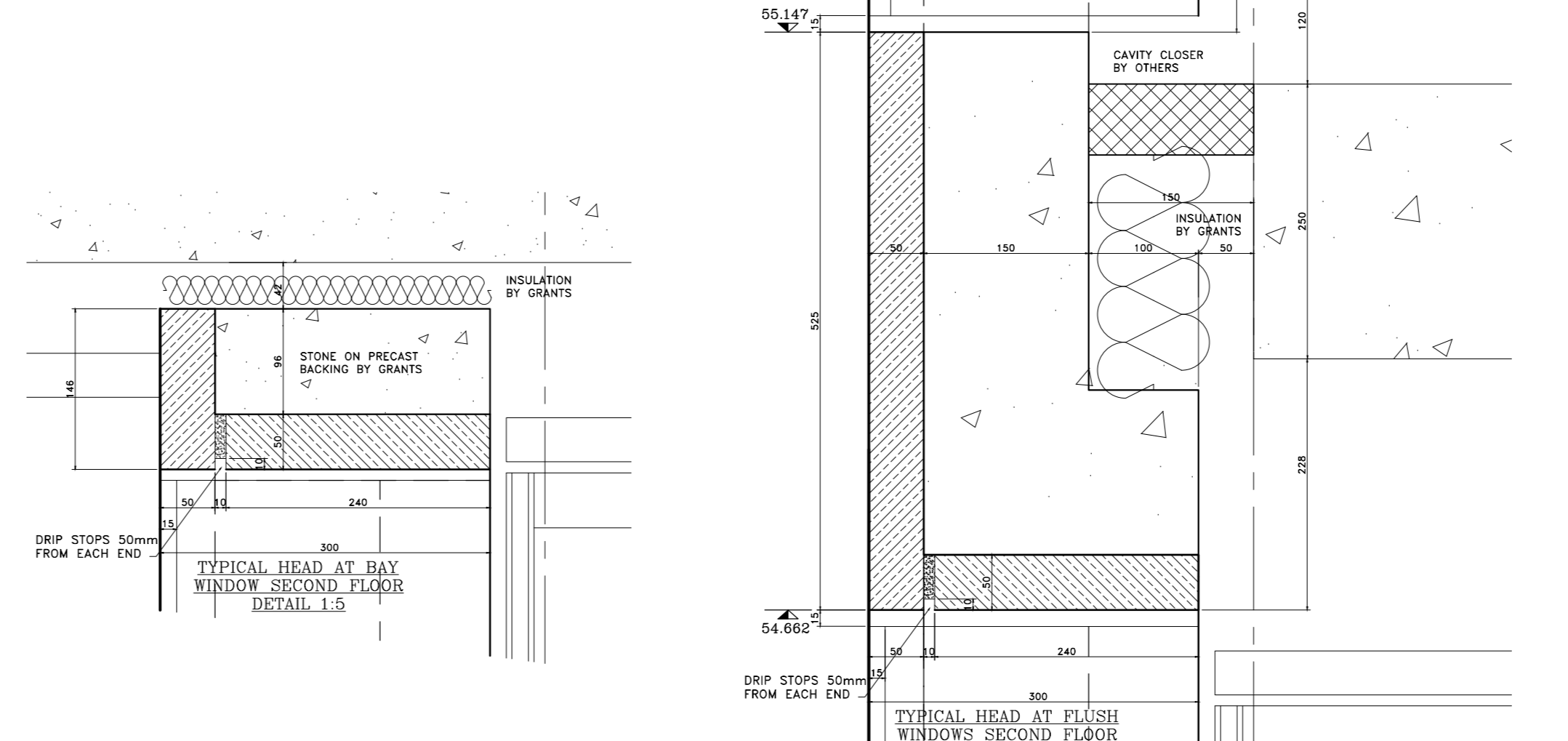
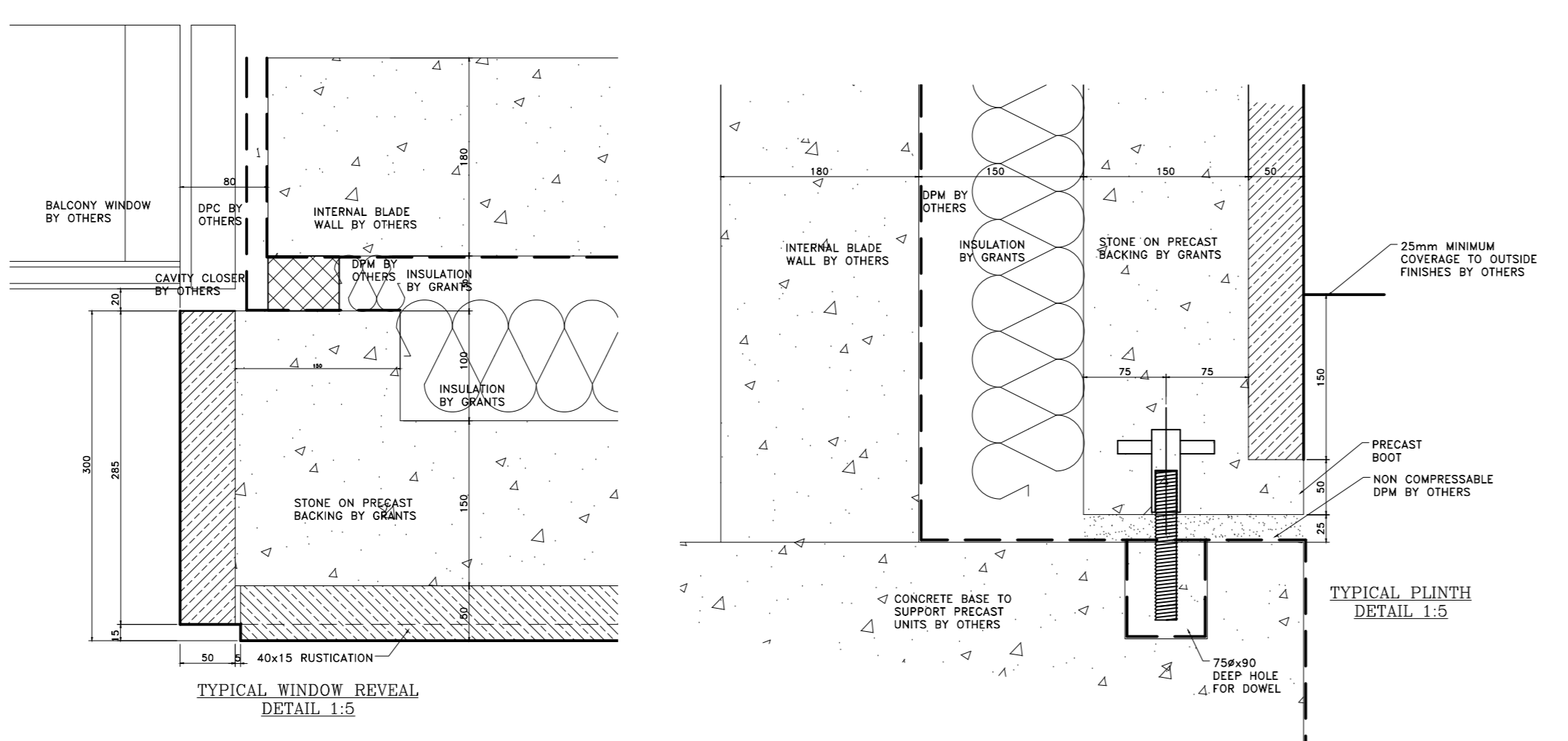
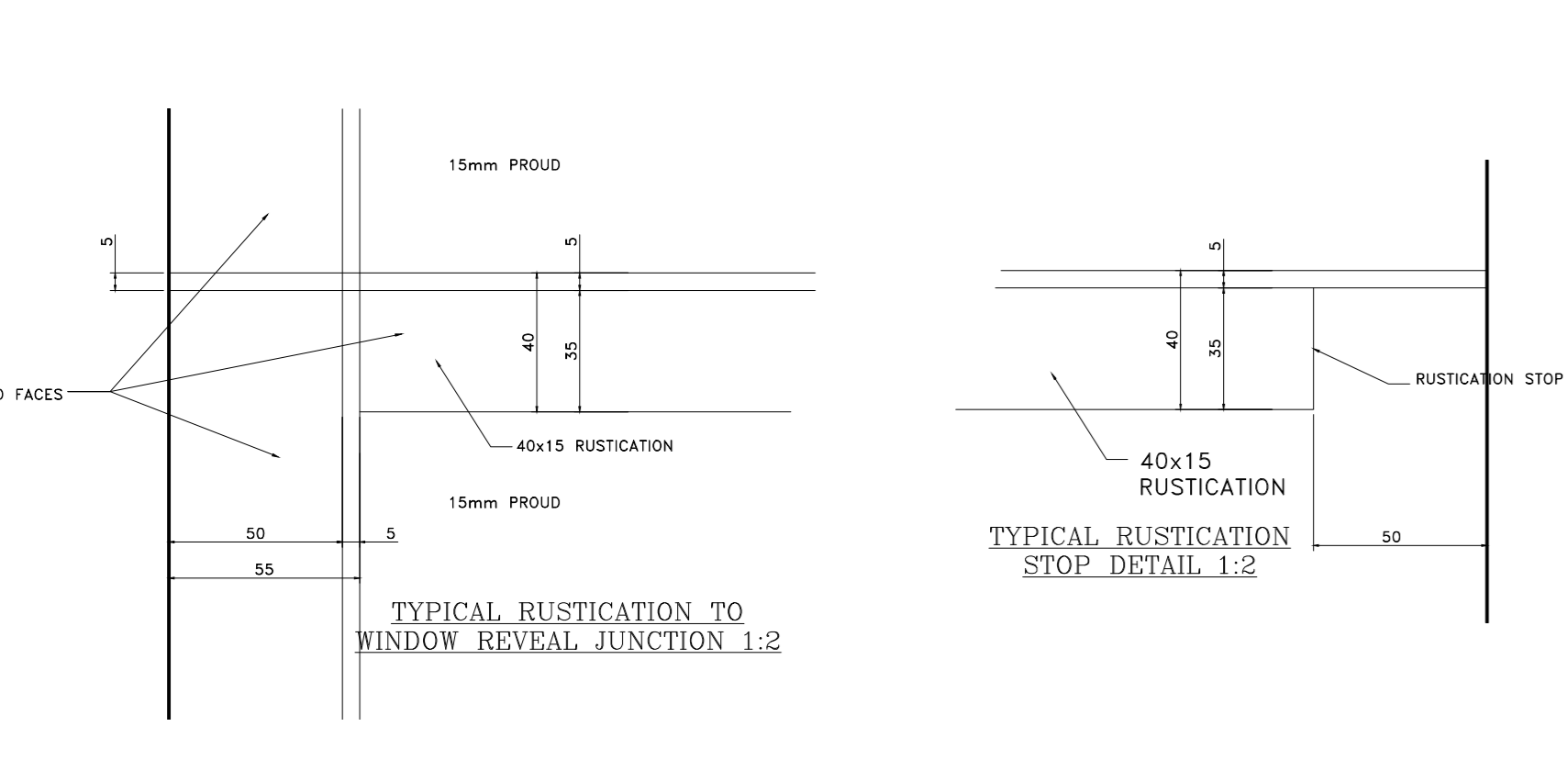
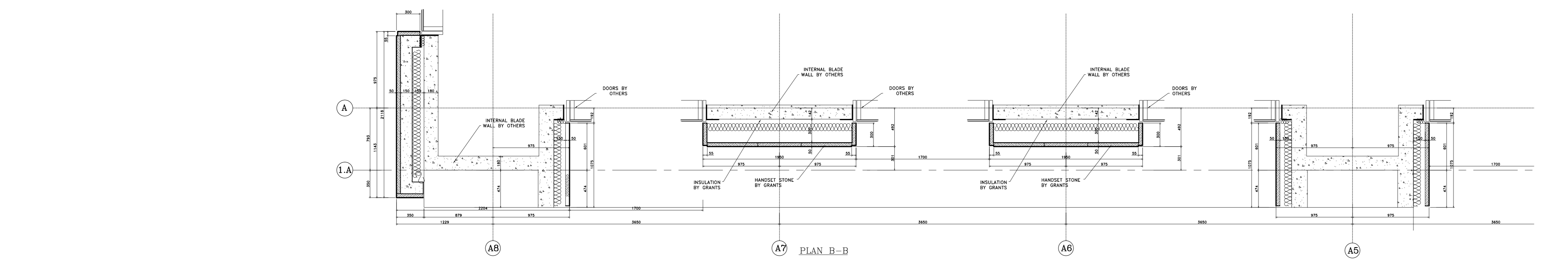
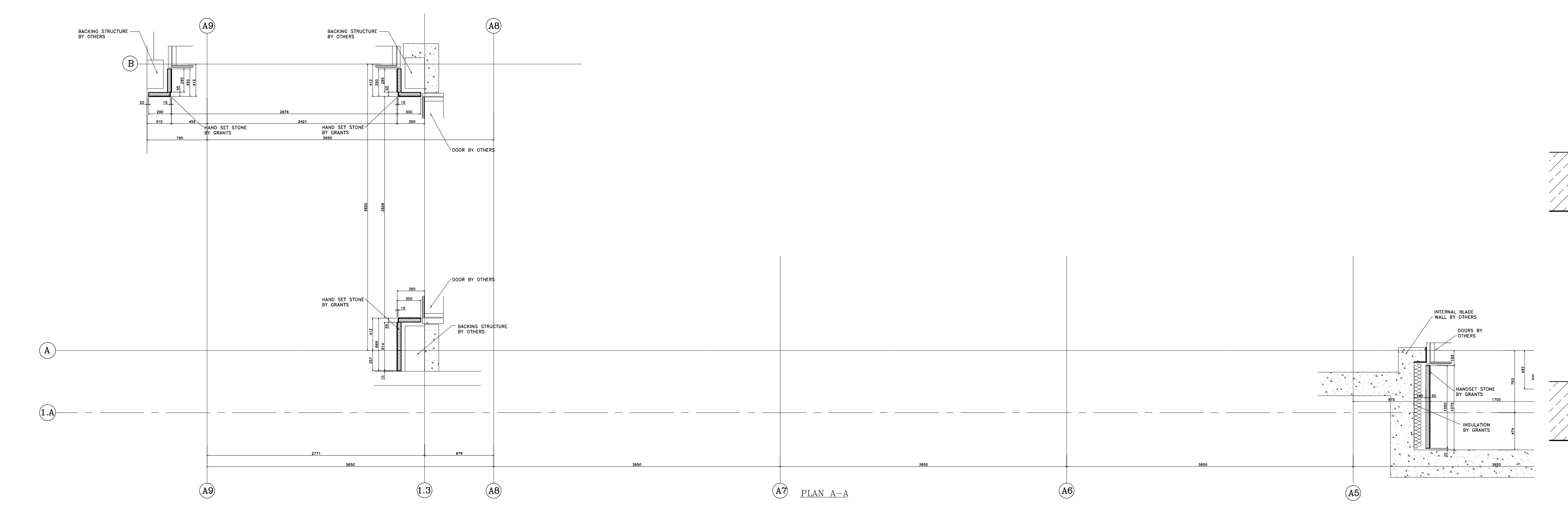


CONTINUED ON DRAWING 3205-A-GA-1043



CONTINUED ON DRAWING 3205-A-GA-1045



**Notes:**  
 STONE TYPE TO RUSTICATED STONEWORK TO BE PORTLAND BOWERS ROACH SAMPLE AND RANGE TO BE APPROVED.  
 STONE TYPE TO NON-RUSTICATED STONEWORK TO BE PORTLAND FANCY BEACH WHITBED SAMPLE AND RANGE TO BE APPROVED.  
 STONE TYPE TO PLINTH STONEWORK TO BE GRANITE (SAMPLE TO BE APPROVED).  
 STANDARD JOINTS TO BE 6mm FULLY POINTED TO APPROVED SAMPLE.  
 ALL MASTIC JOINTS TO MATCH APPROVED SAMPLES.  
 ALL FIXING RESTRAINTS TO BE STAINLESS STEEL GRADE 304 AND TO BE ISOLATED FROM THE MILD STEEL TO PREVENT BIMETALLIC REACTION.  
 ALL STONES SHOULD HAVE NUMBERS MARKED ON UNSEEN FACES AND BE PROVIDED AS PER THE CUTTING SCHEDULES.  
 INSULATION TO BE KINGSPAN TWISS.  
 ALL WATERPROOFING DPM BY OTHERS.

CDM Regulations  
 Design Risk Assessment:  
 The size and shape of individual stones for this project have been designed to satisfy the overall design requirements for the building. All persons handling and installing such stones should be aware that there are risks associated with this type of work that cannot be designed out.  
 RISK: INJURY  
 Risk Reduction:  
 Fixers must be suitably experienced in the handling of stones and employ lifting methods appropriate to the size and shape of that component. Access and platforms must be to the standard required by current legislation.  
 Rubbers must always be made to COSHH information for the materials being used.

Rev.	Reason For Issue	Date

This drawing is the property of Grants and is to be used only for the contracted parties. Any attempt to reuse, alter, or transfer this drawing without the prior written consent of Grants is strictly prohibited. Grants will not be held liable for any errors occurring through the use of this drawing by other parties. Do not scale drawings.

**GRANTS**  
 SUBSTRATA STONE CONTRACTORS

GRANTS OF SHOREDITCH LTD  
 GRANTS HOUSE, PROSPECT WAY  
 NUTTAL, BRENTWOOD  
 ESSEX, CM13 1XD  
 0206 770288 Fax: 020 703 0800  
 E: info@grantsstone.com

Project:  
**ST EDMUNDS TERRACE LONDON**

Architect:  
**SQUIRE AND PARTNERS**

Contractor:  
**MACE**

Drawing Title:  
**BLOCK 1 WEST ELEVATION LEFT HAND END GROUND TO SECOND FLOOR**

Drawn By: **SM** Checked By: **SM** Scale: **1:30 @ A0** Date: **15/07/13** Revision: **0**

Drawing No.: **3205-A-GA-1044**