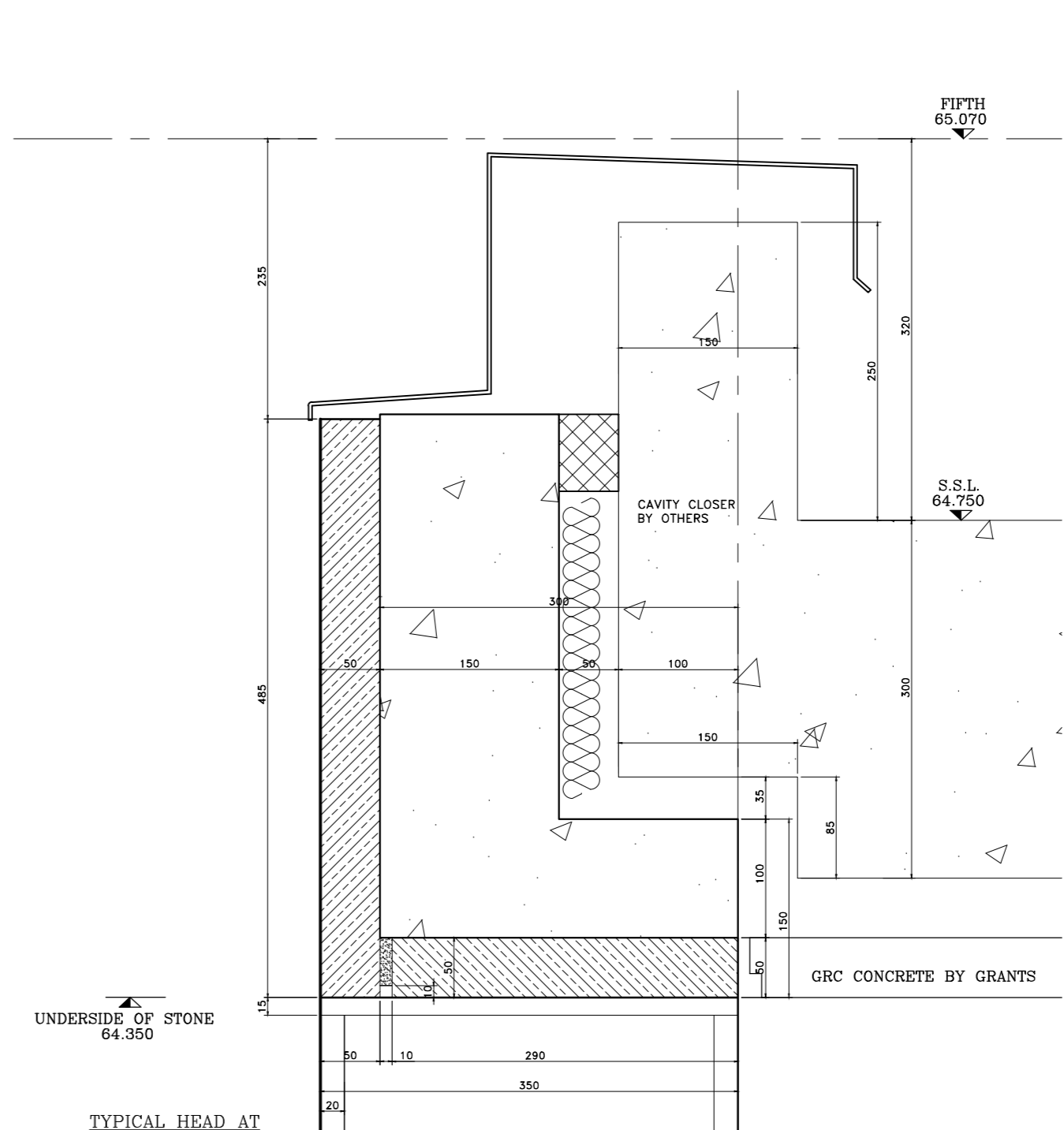
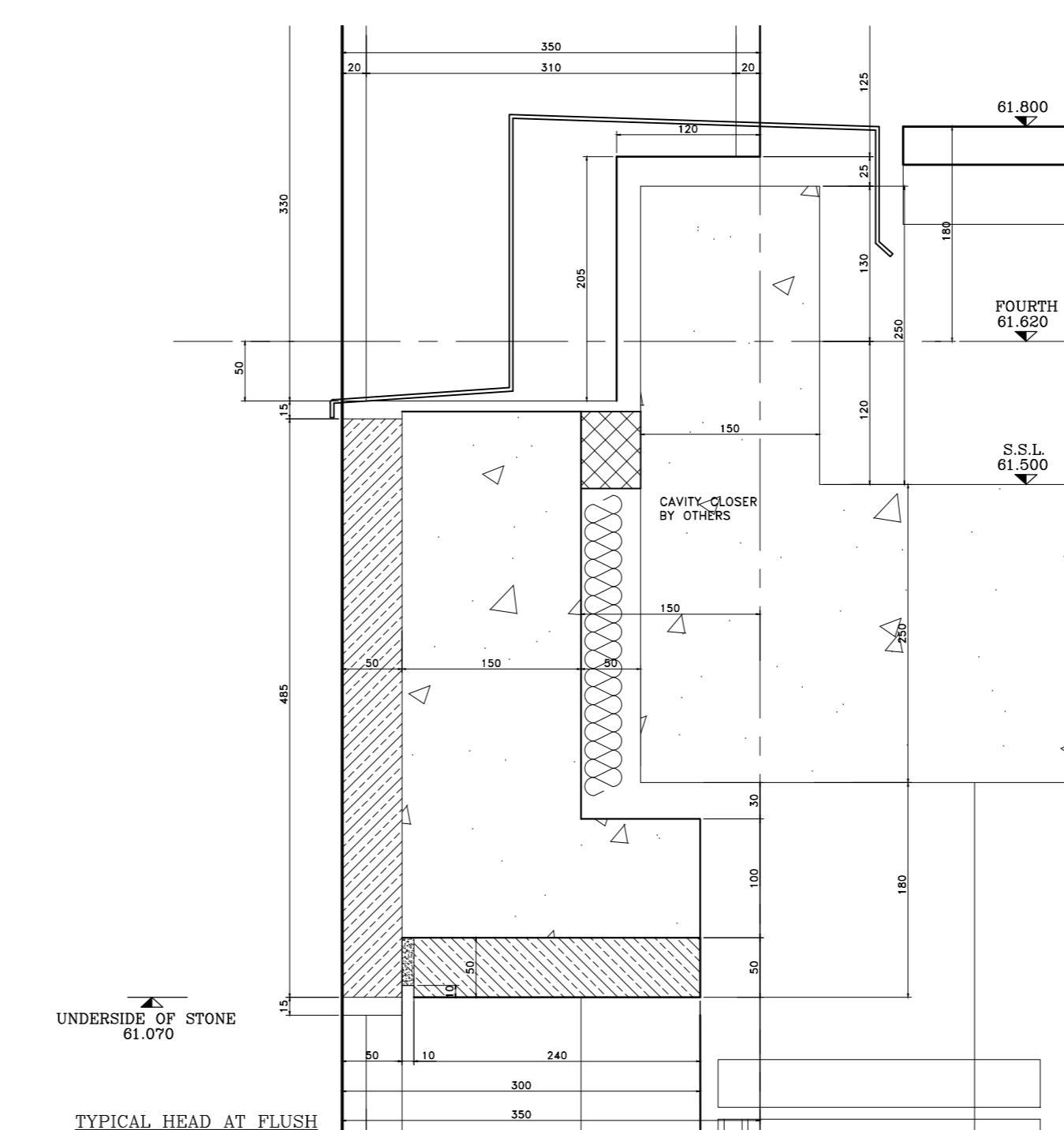
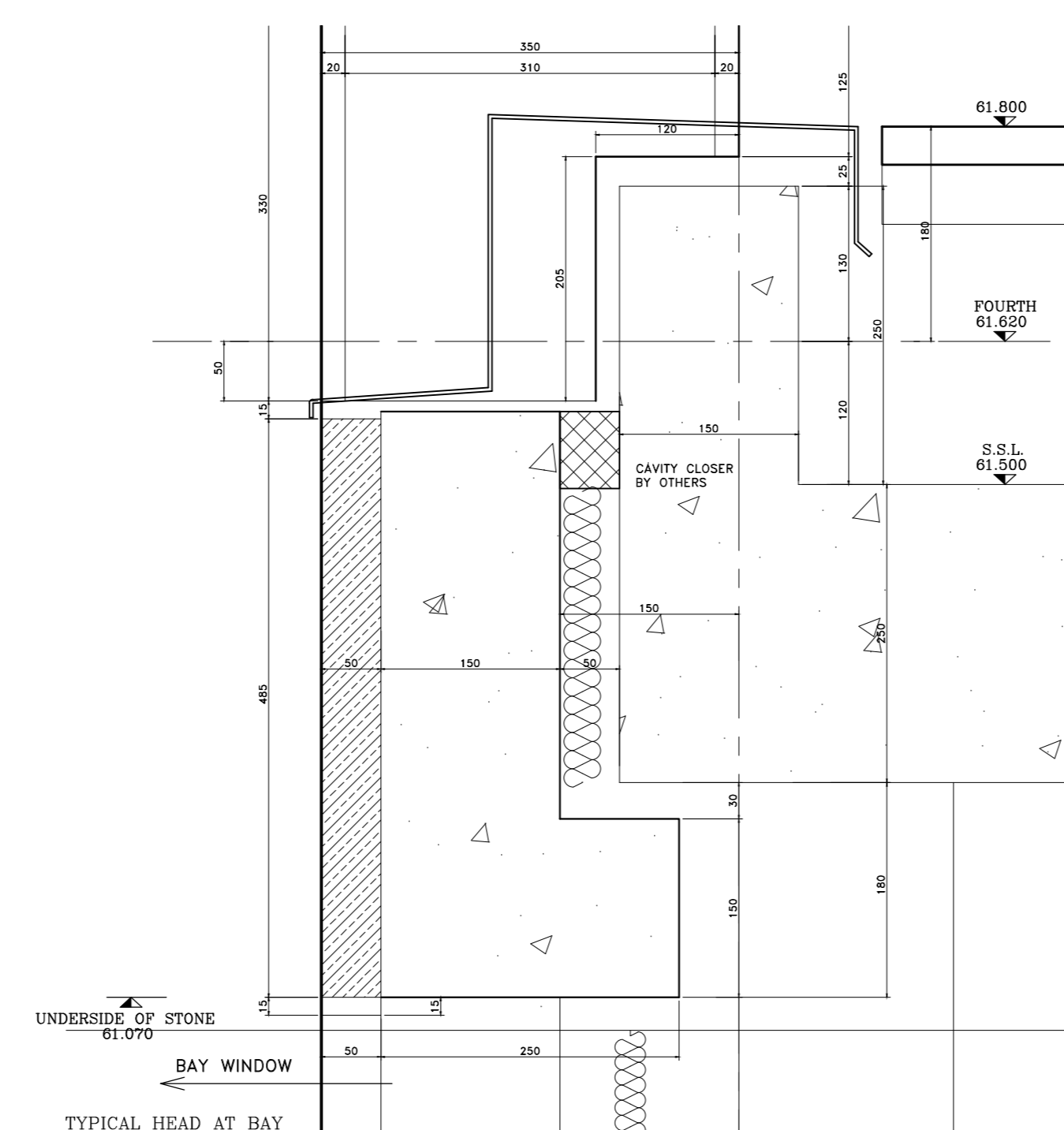
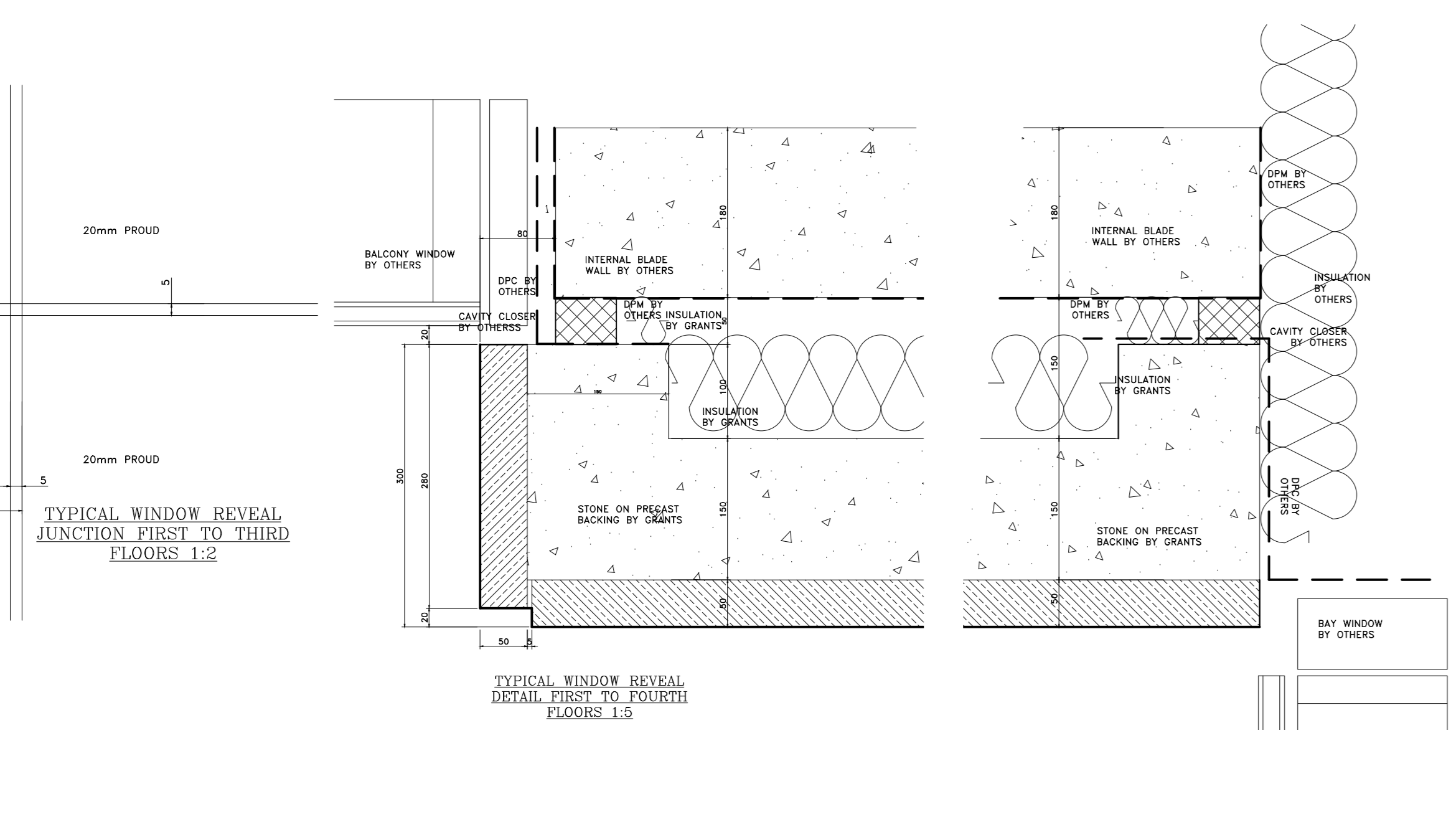
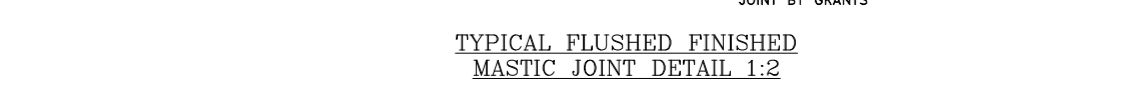
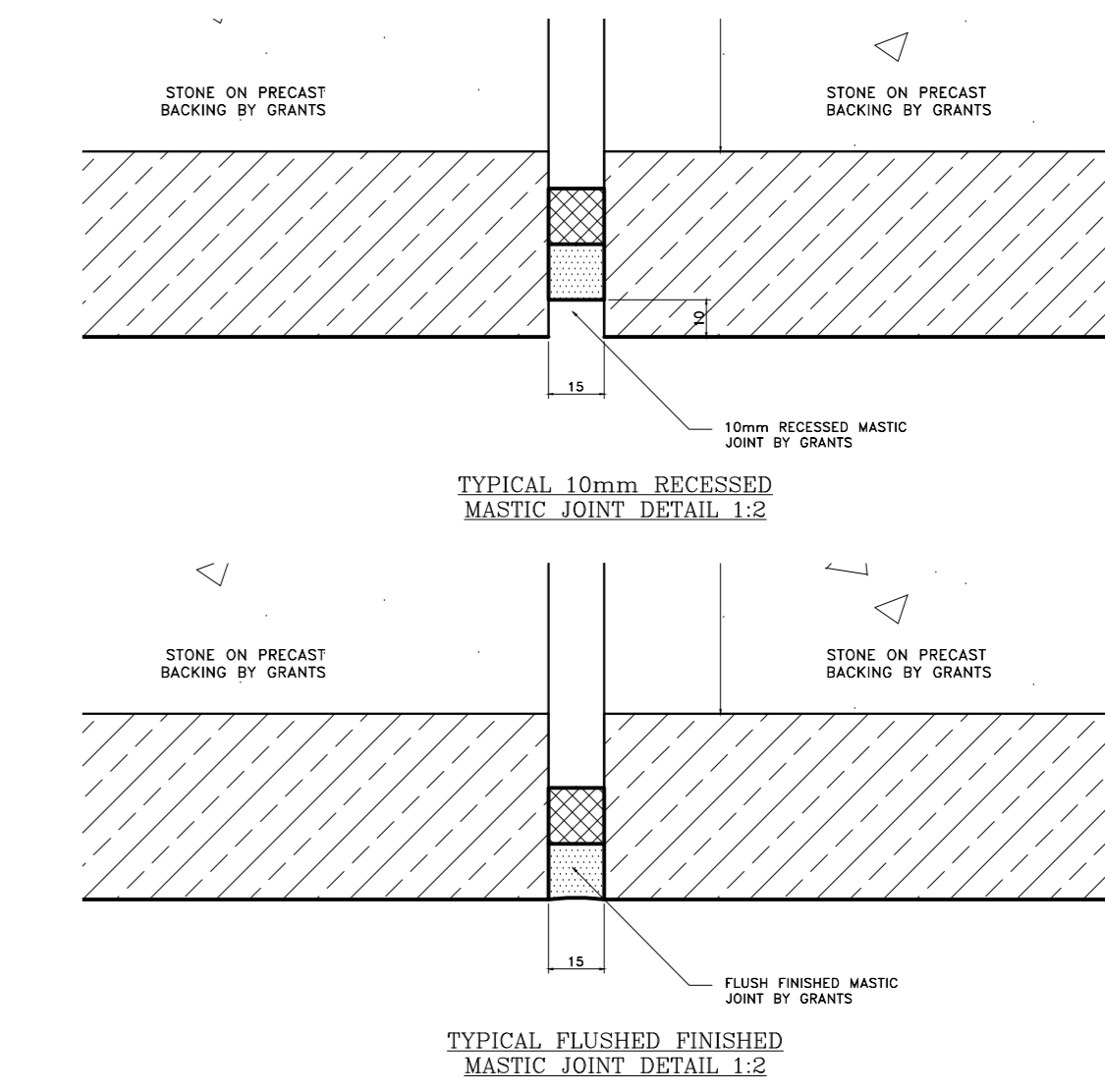
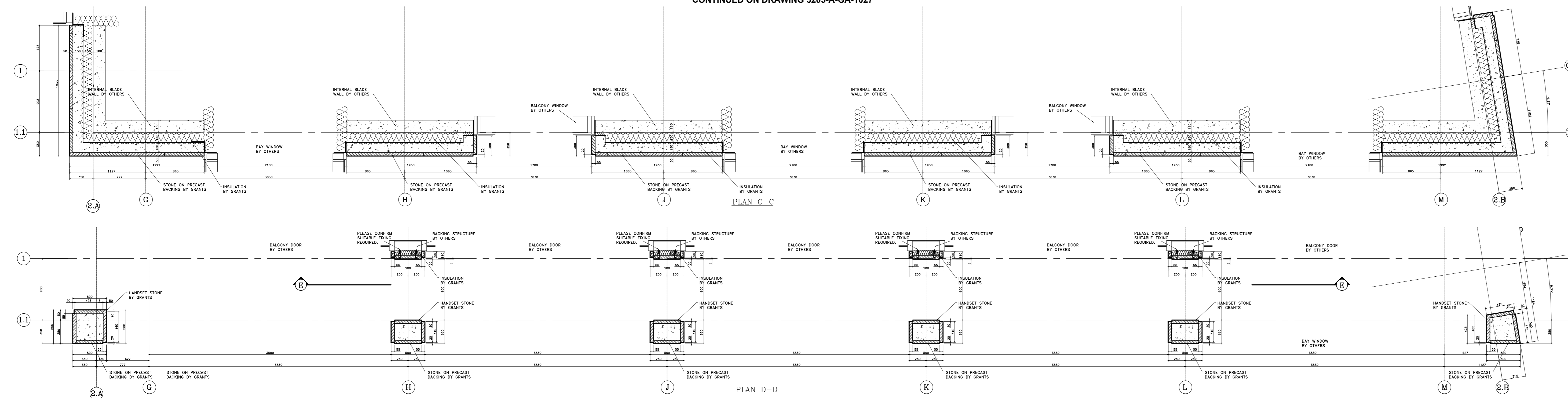


CONTINUED ON DRAWING 3205-A-GA-1038

CONTINUED ON DRAWING 3205-A-GA-1034

CONTINUED ON DRAWING 3205-A-GA-1027



Notes:

STONE TYPE TO RUSTICATED STONEMWORK TO BE PORTLAND BOWERS ROACH SAMPLE AND RANGE TO BE APPROVED.

STONE TYPE TO NON RUSTICATED STONEMWORK TO BE PORTLAND FANCY BEACH WHITBED SAMPLE AND RANGE TO BE APPROVED.

STONE TYPE TO PLINTH STONEMWORK TO BE GRANITE (SAMPLE TO BE APPROVED).

STANDARD JOINTS TO BE 6mm FULLY POINTED TO APPROVED SAMPLE.

ALL MASTIC JOINTS TO MATCH APPROVED SAMPLES.

ALL FIXING RESTRAINTS TO BE STAINLESS STEEL GRADE 304 AND TO BE ISOLATED FROM THE MILD STEEL TO PREVENT BIMETALLIC REACTION.

ALL STONES SHOULD HAVE NUMBERS MARKED ON UNSEEN FACES AND BE PROVIDED AS PER THE CUTTING SCHEDULES.

INSULATION TO BE KINGSPAN TWISS.

ALL WATERPROOFING DPM BY OTHERS.

CDM Regulations
Design Risk Assessment:

The size and shape of individual stones for this project have been designed to satisfy the overall design requirements for the building. All persons handling and installing such stones should be aware that there are risks associated with this type of work that cannot be designed out.

RSK: INJURY
Risk Reduction:
Fixers must be suitably experienced in the handling of stones and employ lifting methods appropriate to the size and shape of that component. Access and platforms must be to the standard required by current legislation.
Robustness must always be made to COSHH information for the materials being used.

Rev.	Reason For Issue	Date
A	Updated to Architects comments.	24.05.13

This drawing is the property of Grants and is to be used only for the contracted parties. Grants will not be held liable for any errors occurring through the use of this drawing by other parties. Do not scale drawings.



Project:
ST EDMUNDS TERRACE LONDON

Architect:
SQUIRE AND PARTNERS

Contractor:
MACE

Drawing Title:
BLOCK 2 SOUTH ELEVATION THIRD TO FIFTH FLOOR

Drawing No.: **3205-A-GA-1033**